

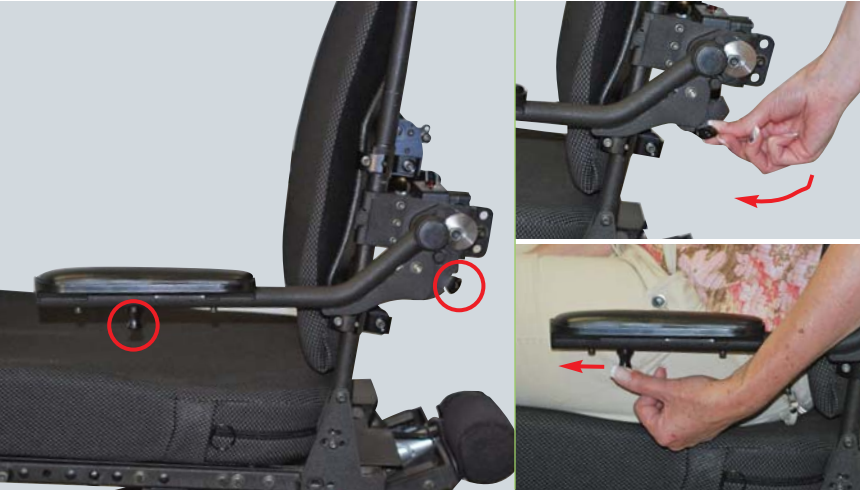
ARMREST OPTIONS:

HEIGHT AND ANGLE ADJUSTABLE CANTILEVER FLIP BACK RECLINE ARM WITH CAMLOCK



- > Latch Plate permits the attendant to release the armrest to be flipped back
- > Armrest can be configured to be parallel or perpendicular to the seat frame when fully reclined
- > In the upright position armrest can be adjusted to the desired angle

DUAL RELEASE LOCKING ARM



Optional for Tilt or Recline systems Recline Cantilever Armrest

- > Designed to pivot around its mounting point for easy side transfers
- > Trigger Switch and Latch Plate permits the user and/or attendant to release the armrest to be flipped back
- > Armrest can be configured to be parallel or perpendicular to the seat frame when fully reclined
- > In the upright position armrest can be adjusted to the desired angle
- > Can accommodate lower arm heights

HEIGHT AND ANGLE ADJUSTABLE CANTILEVER FLIP BACK ARMREST



- > Designed for Tilt and Recline Systems
- > Armrest can be configured to be parallel or perpendicular to the seat frame when fully reclined
- > Arm retains ability to flip back completely
- > Independent Height Adjustment

HEIGHT AND ANGLE ADJUSTABLE CANTILEVER FLIP BACK RECLINE ARM WITH QUICK LOCK MECHANISM



- > Locks arm rest in down position for stable transfer/re-positioning surface
- > Optional for Tilt or Recline systems
- > Easy access release mechanism
- > Arm retains ability to flip back completely

RECLINING ADJUSTABLE HEIGHT ARMREST



- > Flip back and removable for easier transfers
- > Height adjustable in 2 sizes:
Standard: 9½" - 18½"
Pediatric: 7¾" - 10"
- > Adjustment range is 3"

HIGH PIVOT MECHANICAL SHEAR RECLINE ADJUSTABLE HEIGHT



- > Flip back and removable for easier transfers
- > Height adjustment range 11" - 16"
- > Can accommodate lower arm heights

ARMREST OPTIONS:

DUAL POST ARMREST



- > Durable, precision machined rear pivot for long term stability and tolerance
- > Flip back and removable for easier transfers
- > Height adjustable in 3 sizes:
 - Small: 9¾" - 12¾"
 - Medium: 12¾" - 15¾"
 - Large: 15¾" - 18¾"
- > Optional quick height adjustment lever available at nominal upcharge

PEDIATRIC ARMREST



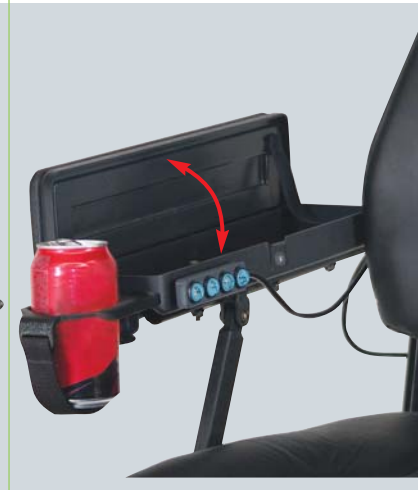
- > Specially created and scaled down for kids
- > Durable, precision machined rear pivot for long term stability and tolerance
- > Flip back and removable for easier transfers
- > Height adjustable in 3 sizes:
 - Small: 6" - 7½"
 - Medium: 6¾" - 8¼"
 - Large: 8¼" - 9"

ARM STORAGE COMPARTMENT



- > Sleek and modern automotive look
- > Quad release and closure for clients with limited dexterity
- > Made of sturdy, durable material
- > Available on Motion Concepts dual post arms only
- > No charge option with Ultra-Low systems

CUP HOLDER/STORAGE ARMREST



- > Retractable cup holder fits most standard cans or bottles
- > Arm pad flips open to store items
- > Comfortable padded armrest
- > Available for left or right side
- Size: 4" wide x 14" long

POWER FLIP BACK DUAL POST ARM



- > Arm is powered to flip back 90°
- > Available on UltraLow CG tilt systems and elevate-only systems which utilize a dual post height adjustable armrest
- > Height adjustment is not compromised with the power flip back module
- > May be used with dual post height adjustable arms with quick height adjustment lever
- > All arm pad options are still available
- > Elbow blocks may be added
- > Available left or right

POWER OR MANUAL FLIP DOWN TRANSFER ARM



- > Transfer arm available with power or manual drop down
- > Power version operates through a separate switch or through the joystick control
- > The manual version uses a small manual linkage located at the bottom of the armrest
- > Client can slide/shuffle along seat pan onto armrest for easy transfer
- > Weight capacity: up to 200 lbs
- > Available left or right

OUTBACK ARM



- > Available for the Motion Concept's dual post tilt armrest or the recline armrest
- > OutBack Arm pivots 30° outward to allow clearance for Arm Troughs, lateral supports and other positioning components

MULTI-AXIS UPPER EXTREMITY SUPPORT



- > Single locking bolt or ratchet allows infinite adjustment of angle and rotation of armpad or arm trough
- > Ability to capture complex positions of client's arm/hand
- > Universal 7/8" clamp which allows it to fit on any wheelchair armrest, be it, manual or power
- > Low profile bracket easily interfaces with the Motion Concept's gel armpad, Arm Trough or Multi-Position Flat Armpad