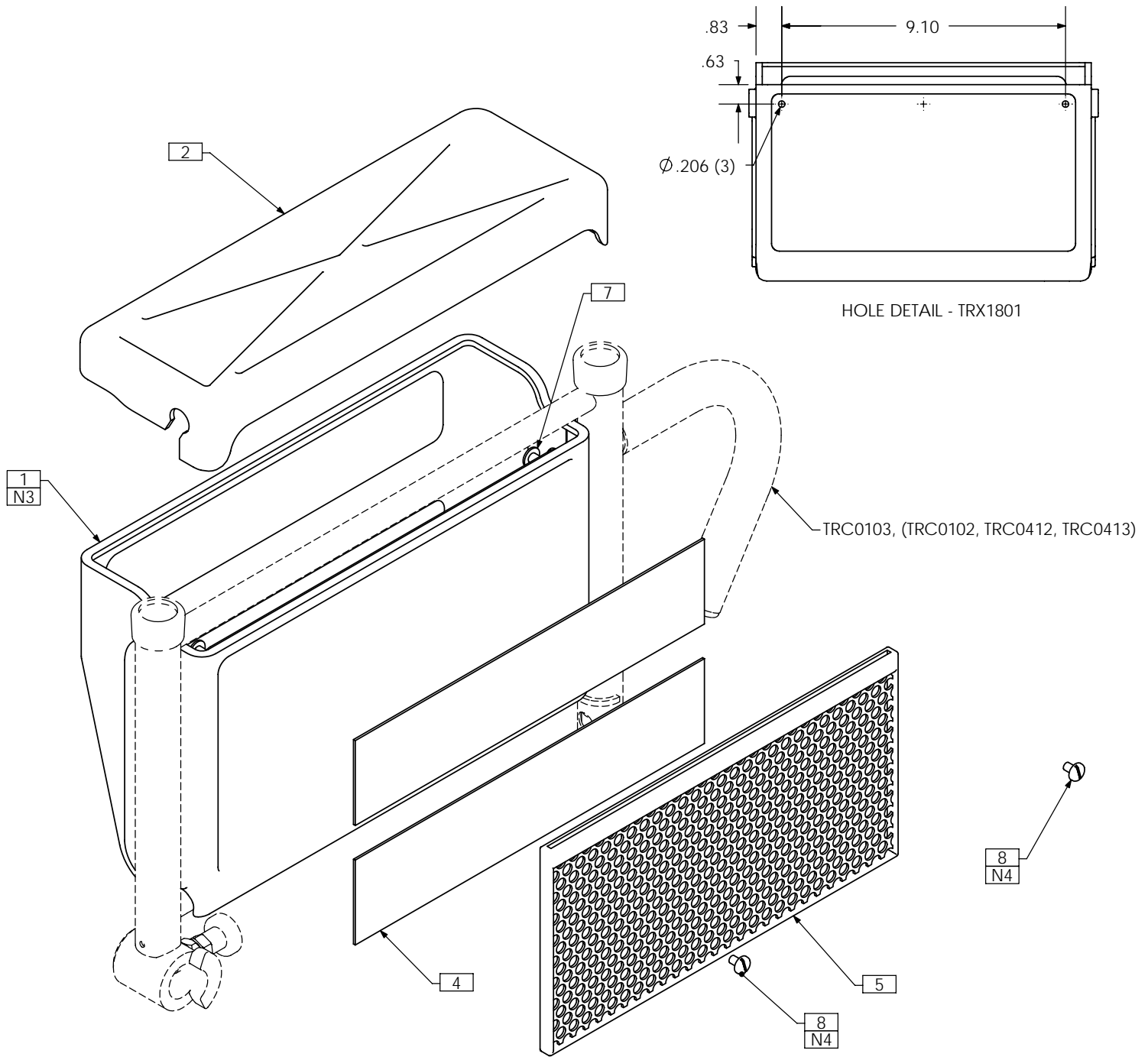


# A C C E S S O R I E S



# TRC0348 - ARM STORAGE BOX ASS'Y, TILT ARMREST

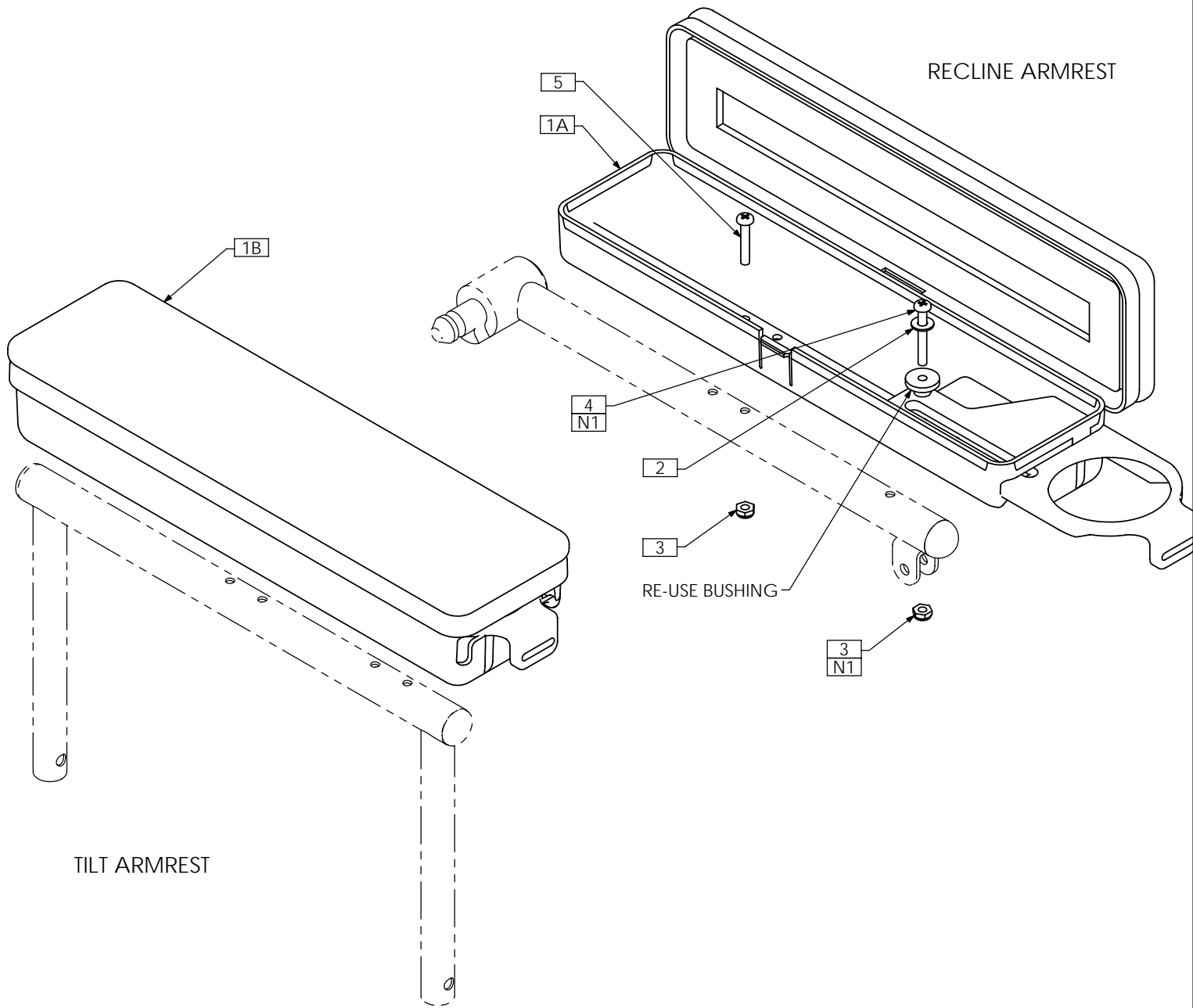


**NOTES:**

- 1. N/S = NOT SHOWN
- 2. LEFT SIDE SHOWN. (ASSEMBLED SAME FOR RIGHT SIDE)
- 3. HOLES TO BE ADDED IN ARM STORAGE BOX - SEE HOLE DETAIL
- 4. SCREWS SECURED THROUGH NET POCKET ELASTIC
- 5. LIMIT STRAP CONSTRUCTED FROM ITEMS 3 AND 6. USE AS REQUIRED

| ITEM NO. | QTY. | PART NO. | DESCRIPTION                           |
|----------|------|----------|---------------------------------------|
| 1        | 1    | TRX1801  | ARM STORAGE BOX                       |
| 2        | 1    | TRX1802  | ARM STORAGE BOX LID                   |
| 3 N/S    | 1    | TRM0311  | VELCRO - 1" HOOK                      |
| 4        | 2    | TRM0312  | VELCRO - 2" LOOP                      |
| 5        | 1    | TRM0382  | NET POCKET                            |
| 6 N/S    | 1    | TRM0435  | VELCRO - 1" LOOP - NO ADHESIVE        |
| 7        | 2    | TRH0234  | #8-32 x 1/4" BINDER POST NUT          |
| 8        | 2    | TRH0505  | #8-32 x 1/4" SLOT TRUSS MACHINE SCREW |

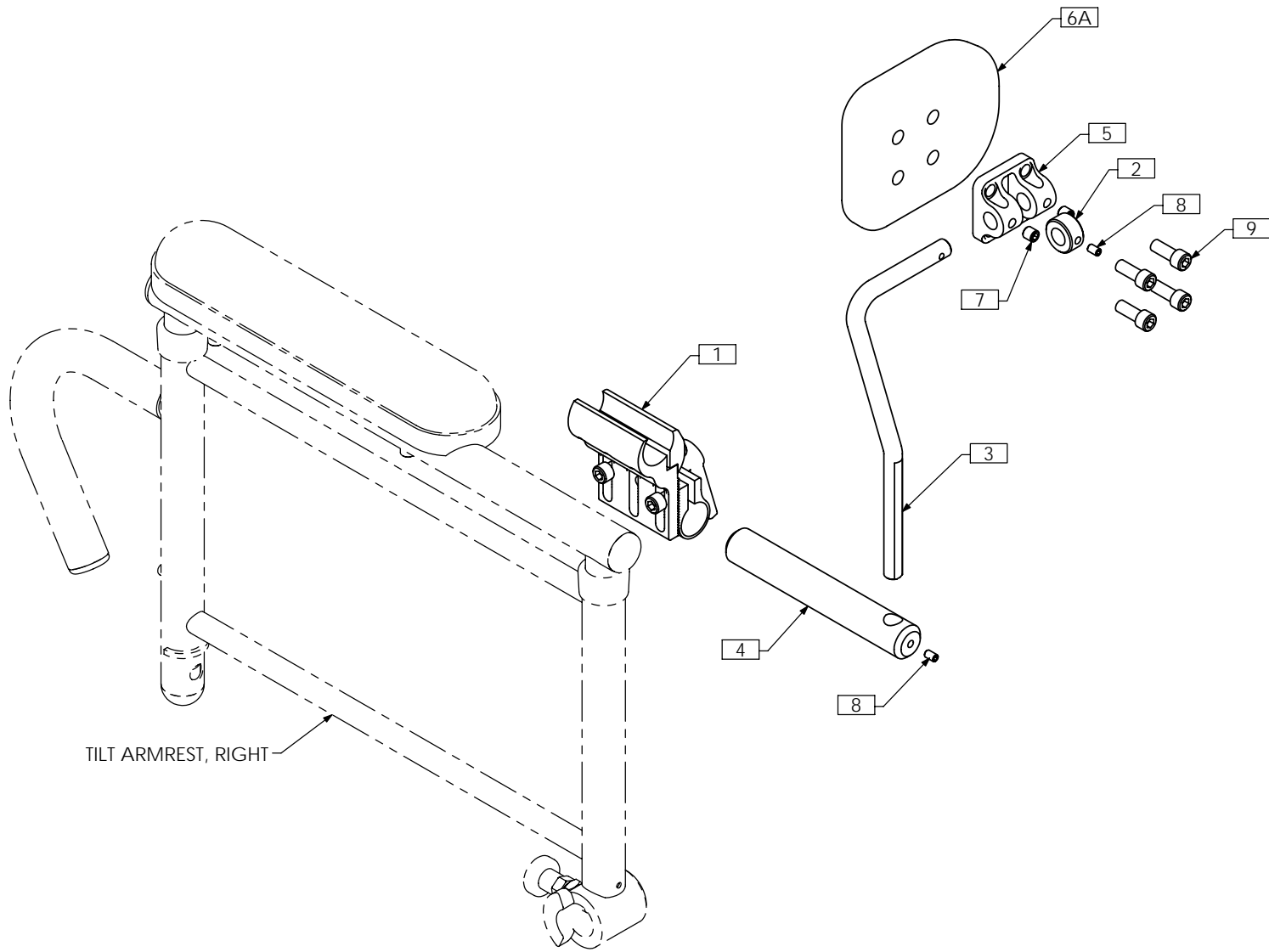
# TRC0487 - CUP HOLDER/STORAGE ARMREST



NOTES:  
 1. ORIGINAL CUP HOLDER HARDWARE IS REPLACED WITH THE INSTALLATION HARDWARE

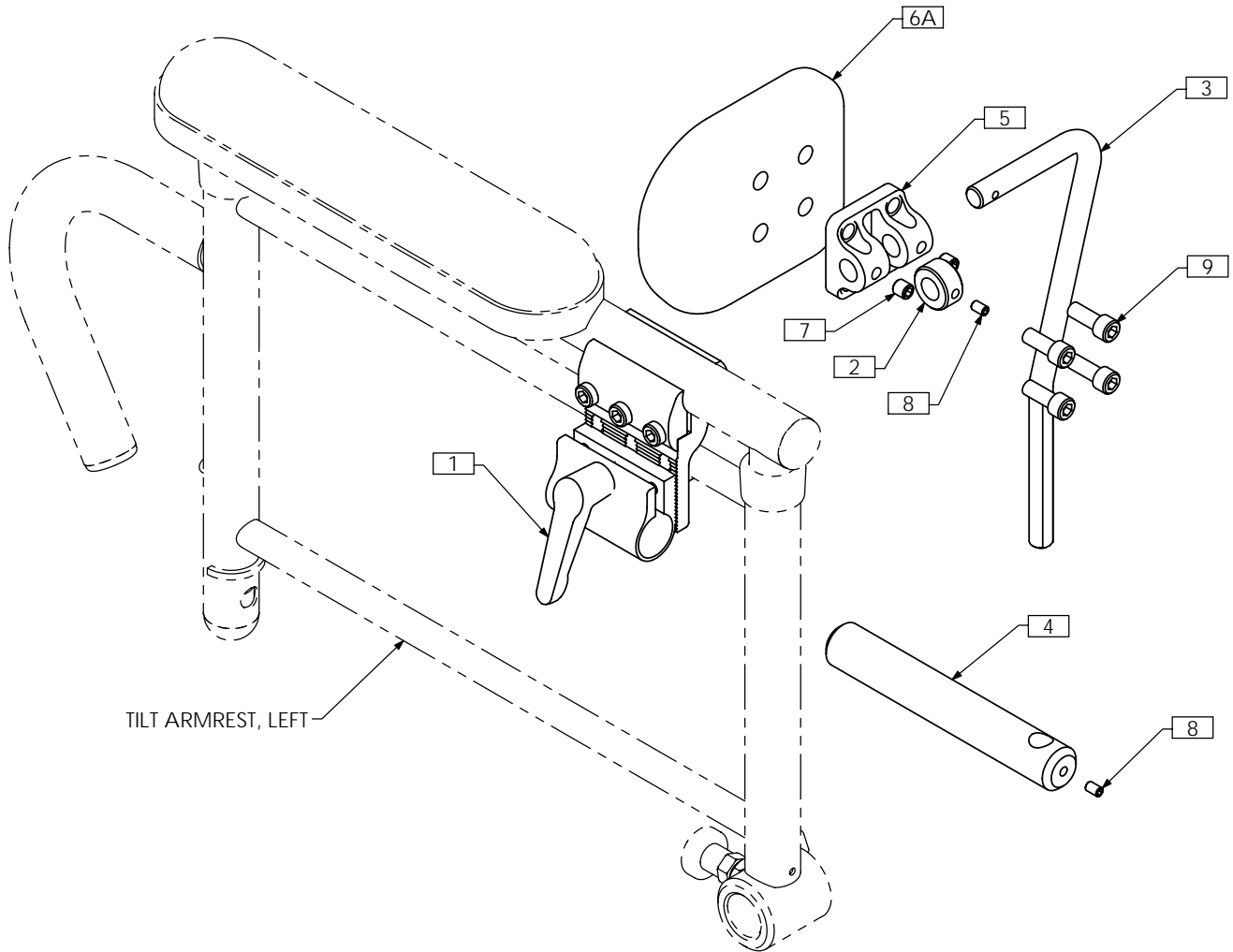
| ITEM NO. | QTY. | PART NO. | DESCRIPTION                                  |
|----------|------|----------|--|
| 1A       | 1    | TRM0391  | CUP HOLDER/STORAGE ARMREST, LEFT             |
| 1B       | 1    | TRM0426  | CUP HOLDER/STORAGE ARMREST, RIGHT            |
| 2        | 1    | TRH0114  | 3/16" FLAT WASHER                            |
| 3        | 2    | TRH0215  | 10-32 SHALLOW NYLOC NUT                      |
| 4        | 1    | TRH0328  | #10-32 x 1 1/2" PHILLIPS TRUSS MACHINE SCREW |
| 5        | 1    | TRH0369  | #10-32 x 1-1/8" PAN PHILLIPS MACHINE SCREW   |

# TRC0520 - TRICEP ARM BLOCK, RIGHT



| ITEM NO. | QTY. | PART NO. | DESCRIPTION                             |
|----------|------|----------|---|
| 1        | 1    | TRC0405  | JOYSTICK CLAMP ASS'Y, 3/4"              |
| 2        | 1    | TRX3160  | PIVOT COLLAR                            |
| 3        | 1    | TRX3161  | BAR                                     |
| 4        | 1    | TRX3162  | MOUNTING BAR                            |
| 5        | 1    | TRX3229  | PIVOT BRACKET                           |
| 6A       | 1    | TRM0542  | PAD, EXTRA SMALL                        |
| 6B N/S   | 1    | TRM0336  | PAD, SMALL                              |
| 6C N/S   | 1    | TRM0337  | PAD, MEDIUM                             |
| 6D N/S   | 1    | TRM0338  | PAD, LARGE                              |
| 7        | 2    | TRH0336  | SET SCREW, 0.25 x 0.25                  |
| 8        | 2    | TRH0501  | #10-32 x 1/4" HEX SOCKET SET SCREW      |
| 9        | 4    | TRH0569  | 1/4-20 x 5/8" SOCKET HEAD CAP SCREW GR8 |

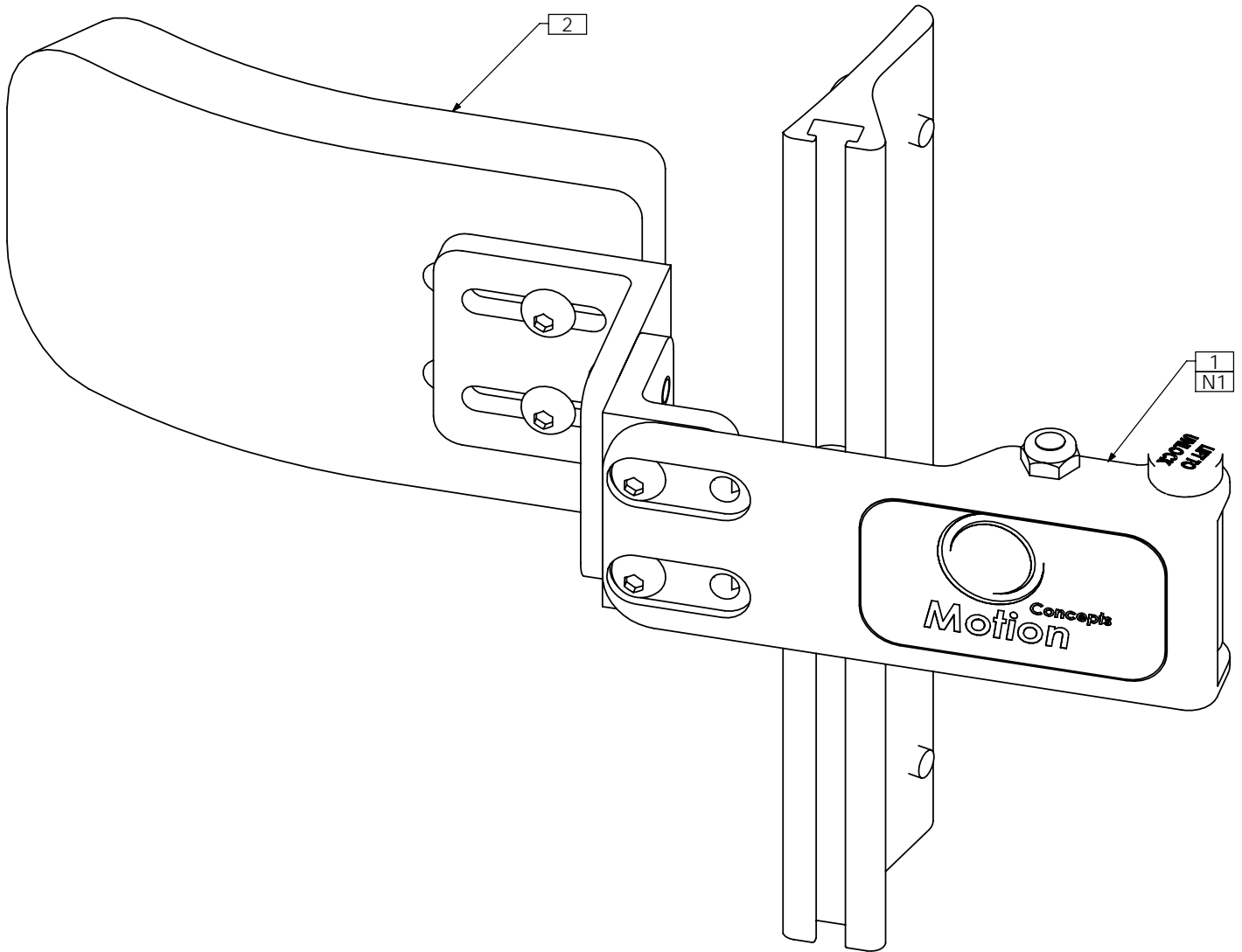
# TRC0521 - TRICEP ARM BLOCK, LEFT



| ITEM NO. | QTY. | PART NO. | DESCRIPTION                             |
|----------|------|----------|---|
| 1        | 1    | TRC0405  | JOYSTICK CLAMP ASS'Y, 3/4"              |
| 2        | 1    | TRX3160  | PIVOT COLLAR                            |
| 3        | 1    | TRX3161  | BAR                                     |
| 4        | 1    | TRX3162  | MOUNTING BAR                            |
| 5        | 1    | TRX3229  | PIVOT BRACKET                           |
| 6A       | 1    | TRM0542  | PAD, EXTRA SMALL                        |
| 6B N/S   | 1    | TRM0336  | PAD, SMALL                              |
| 6C N/S   | 1    | TRM0337  | PAD, MEDIUM                             |
| 6D N/S   | 1    | TRM0338  | PAD, LARGE                              |
| 7        | 2    | TRH0336  | SET SCREW, 0.25 x 0.25                  |
| 8        | 2    | TRH0501  | #10-32 x 1/4" HEX SOCKET SET SCREW      |
| 9        | 4    | TRH0569  | 1/4-20 x 5/8" SOCKET HEAD CAP SCREW GR8 |

# TRC0261 - SWING AWAY LATERALS ASS'Y

| PART NUMBER | CONFIGURATION NAME |
|-------------|--------------------|
| TRC0261-R   | RIGHT SIDE         |
| TRC0261-L   | LEFT SIDE          |

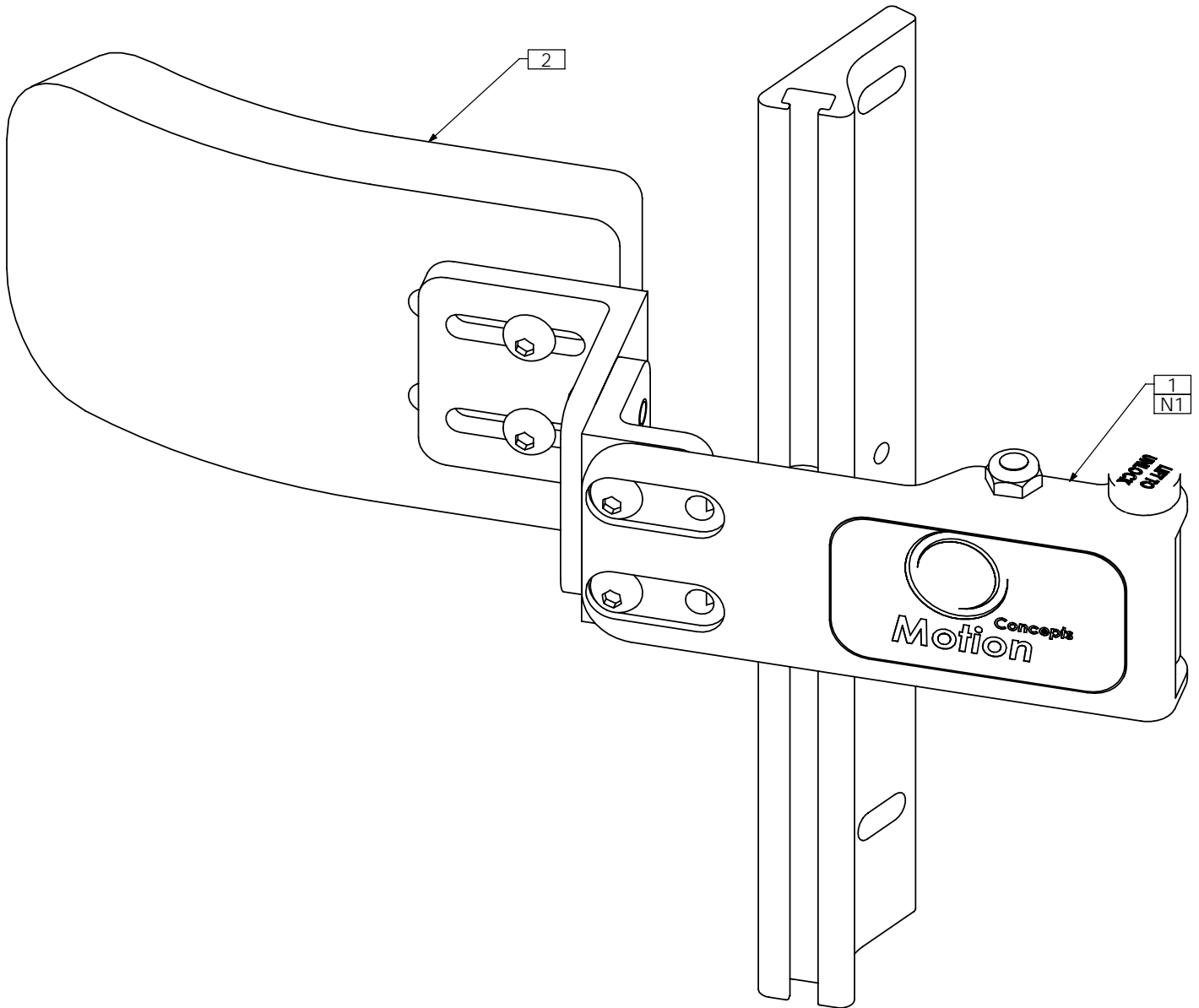


NOTES:  
 1. SWING AWAY LATCH REPLACES TRX1199 IN TRC0602

| ITEM NO. | QTY. | PART NO. | DESCRIPTION          |
|----------|------|----------|----------------------|
| 1        | 1    | TRC0601  | SWING AWAY LATCH     |
| 2        | 1    | TRC0602  | FIXED LATERALS ASS'Y |

# TRC0598 - SWING AWAY LATERALS ASS'Y, FULL BACK HEIGHT

| PART NUMBER | CONFIGURATION NAME |
|-------------|--------------------|
| TRC0598-R   | RIGHT SIDE         |
| TRC0598-L   | LEFT SIDE          |

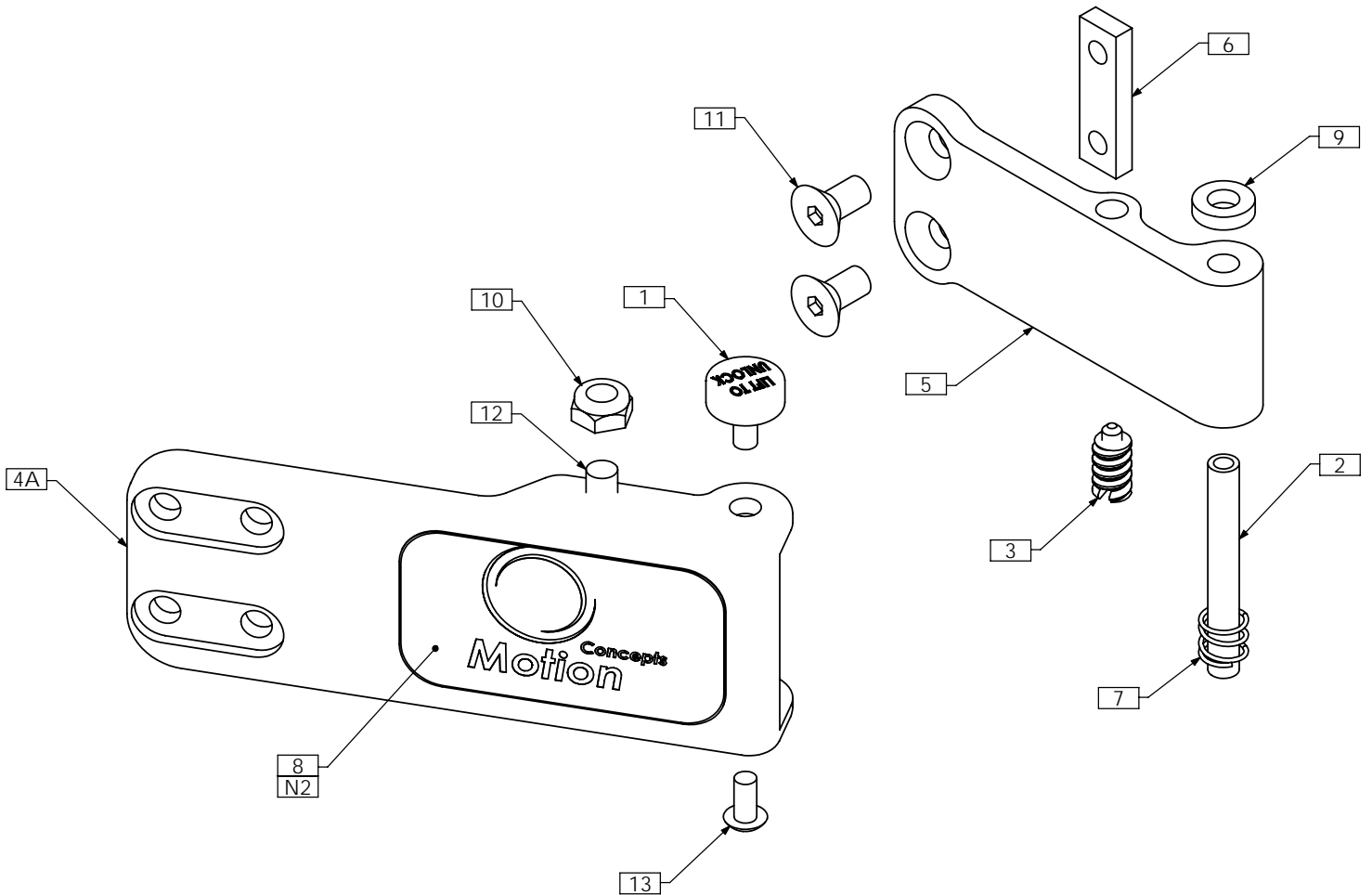


NOTES:  
 1. SWING AWAY LATCH REPLACES TRX1199 IN TRC0603

| ITEM NO. | QTY. | PART NO. | DESCRIPTION                            |
|----------|------|----------|--|
| 1        | 1    | TRC0601  | SWING AWAY LATCH                       |
| 2        | 1    | TRC0603  | FIXED LATERALS ASS'Y, FULL BACK HEIGHT |

# TRC0601 - SWING AWAY LATCH, LATERALS ASS'Y

| PART NUMBER | CONFIGURATION NAME |
|-------------|--------------------|
| TRC0601-R/S | RIGHT SIDE SHORT   |
| TRC0601-R/L | RIGHT SIDE LONG    |
| TRC0601-L/S | LEFT SIDE SHORT    |
| TRC0601-L/L | LEFT SIDE LONG     |



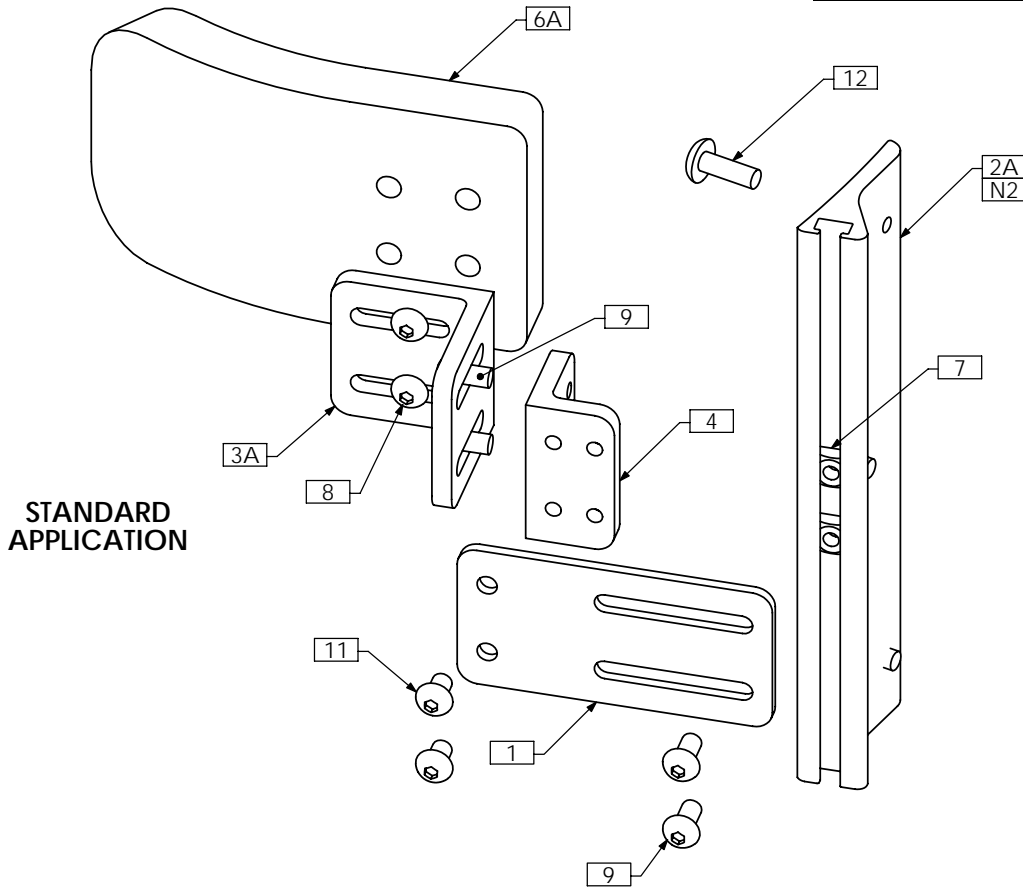
**NOTES:**

1. N/S = NOT SHOWN
2. STICKER SHOWN FOR LEFT SIDE. REVERSE FOR RIGHT SIDE

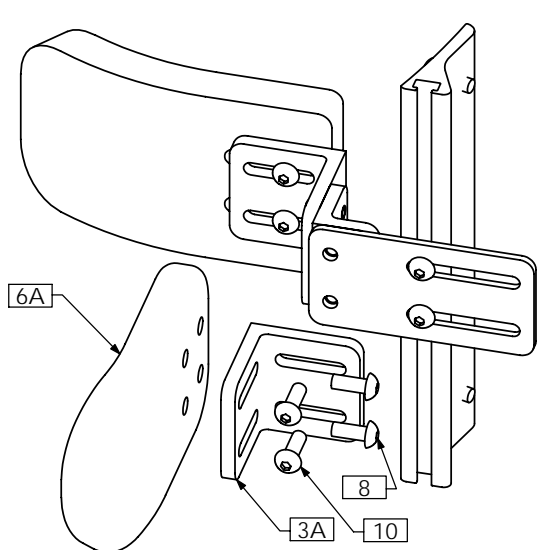
| ITEM NO. | QTY. | PART NO. | DESCRIPTION                           |
|----------|------|----------|---------------------------------------|
| 1        | 1    | TRX1093  | PUSH BUTTON                           |
| 2        | 1    | TRX1117  | PIN                                   |
| 3        | 1    | TRX1215  | LOCKING PIN                           |
| 4A       | 1    | TRX1220  | LATCH PLATE, SHORT                    |
| 4B N/S   | 1    | TRX1092  | LATCH PLATE, LONG                     |
| 5        | 1    | TRX1269  | PIVOT BAR, LONG                       |
| 6        | 1    | TRX1562  | CLAMPING BAR                          |
| 7        | 1    | TRM0303  | SPRING                                |
| 8        | 1    | TRM0307  | STICKER                               |
| 9        | 1    | TRH0133  | ¼"ID x ½"OD x 0.125" NYLON WASHER     |
| 10       | 1    | TRH0202  | ¼-20 SHALLOW NYLOC NUT                |
| 11       | 2    | TRH0447  | ¼-20 x ½" FLAT SOCKET CAP SCREW       |
| 12       | 1    | TRH0457  | ¼-20 x 3/8" BUTTON SOCKET CAP SCREW   |
| 13       | 1    | TRH0475  | #10-32 x 3/8" BUTTON SOCKET CAP SCREW |

# TRC0602 - FIXED LATERALS ASS'Y

| PART NUMBER | CONFIGURATION NAME |
|-------------|--------------------|
| TRC0602-R   | RIGHT SIDE         |
| TRC0602-L   | LEFT SIDE          |



**STANDARD APPLICATION**



**STANDARD APPLICATION WITH ARM PAD**

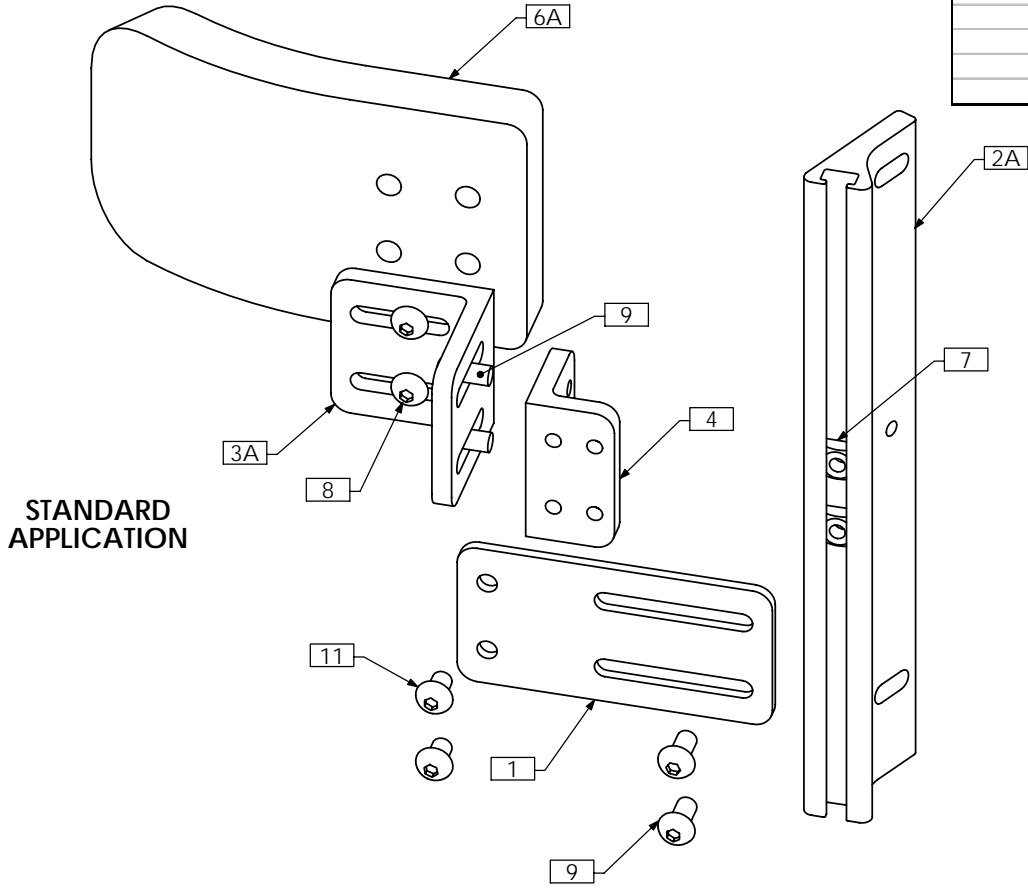
NOTES:  
 1. N/S = NOT SHOWN  
 2. SHIM STOCK TO BE USED FOR CERTAIN APPLICATIONS

| ITEM NO. | QTY. | PART NO. | DESCRIPTION                                |
|----------|------|----------|--|
| 1        | 1    | TRX1199  | 4 INCH EXTENSION PLATE                     |
| 2A       | 1    | TRX1452  | MULTI - RAIL, CURVED RIGID BACK            |
| 2B N/S   | 1    | TRX1444  | MULTI - RAIL, CONTOUR BACK                 |
| 2C N/S   | 1    | TRX0714  | MULTI-RAIL                                 |
| 3A       | 1(2) | TRX2273  | ADAPTER BRKT, SLOTTED                      |
| 3B N/S   | 1    | TRX2413  | 4 INCH "L" BRACKET                         |
| 4        | 1    | TRX2274  | ADAPTER BRKT, 1/4-20                       |
| 5 N/S    | 1    | TRM0308  | NEOPRENE SLEEVE                            |
| 6A       | 1(2) | TRM0337  | PAD, MEDIUM                                |
| 6B N/S   | 1    | TRM0336  | PAD, SMALL                                 |
| 6C N/S   | 1    | TRM0338  | PAD, LARGE                                 |
| 6D N/S   | 1    | TRM0542  | PAD, EXTRA SMALL                           |
| 7        | 2    | TRH0232  | 1/4-20 SQUARE NUT                          |
| 8        | 2(4) | TRH0308  | 1/4-20 x 5/8" BUTTON SOCKET CAP SCREW      |
| 9        | 4    | TRH0429  | 1/4-20 x 1/2" BUTTON SOCKET CAP SCREW      |
| 10       | 0(2) | TRH0445  | 1/4-20 x 3/4" BUTTON SOCKET CAP SCREW      |
| 11       | 2    | TRH0457  | 1/4-20 x 3/8" BUTTON SOCKET CAP SCREW      |
| 12       | 3    | TRH0467  | 1/4-20 x 3/4" PHILLIPS TRUSS MACHINE SCREW |

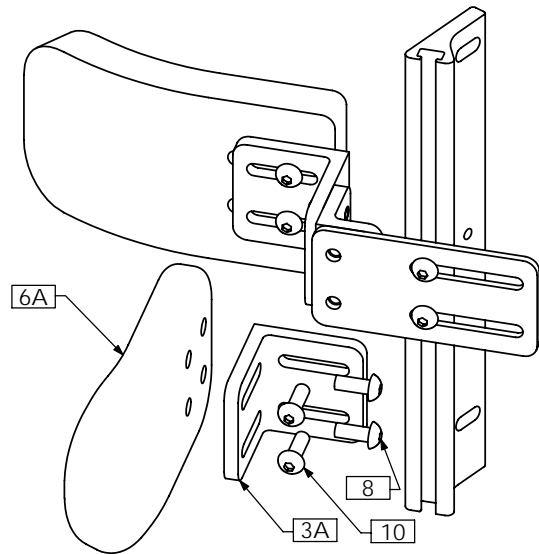
# TRC0603 - FIXED LATERALS ASS'Y, FULL BACK HEIGHT

| PART NUMBER | CONFIGURATION NAME |
|-------------|--------------------|
| TRC0603-R   | RIGHT SIDE         |
| TRC0603-L   | LEFT SIDE          |

| MULTI-RAIL CONFIGURATION HEIGHT REFERENCE |                  |                 |
|---|------------------|-----------------|
| BACK PAN HEIGHT                           | RIGHT MULTI-RAIL | LEFT MULTI-RAIL |
| 20"                                       | TRX2578-20       | TRX2579-20      |
| 19"                                       | TRX2578-19       | TRX2579-19      |
| 18"                                       | TRX2578-18       | TRX2579-18      |
| 17"                                       | TRX2578-17       | TRX2579-17      |
| 16"                                       | TRX2578-16       | TRX2579-16      |
| 15"                                       | TRX2578-15       | TRX2579-15      |
| 14"                                       | TRX2578-14       | TRX2579-14      |
| 13"                                       | TRX3033-13       | TRX3033-13      |
| 12"                                       | TRX3033-12       | TRX3033-12      |



STANDARD APPLICATION

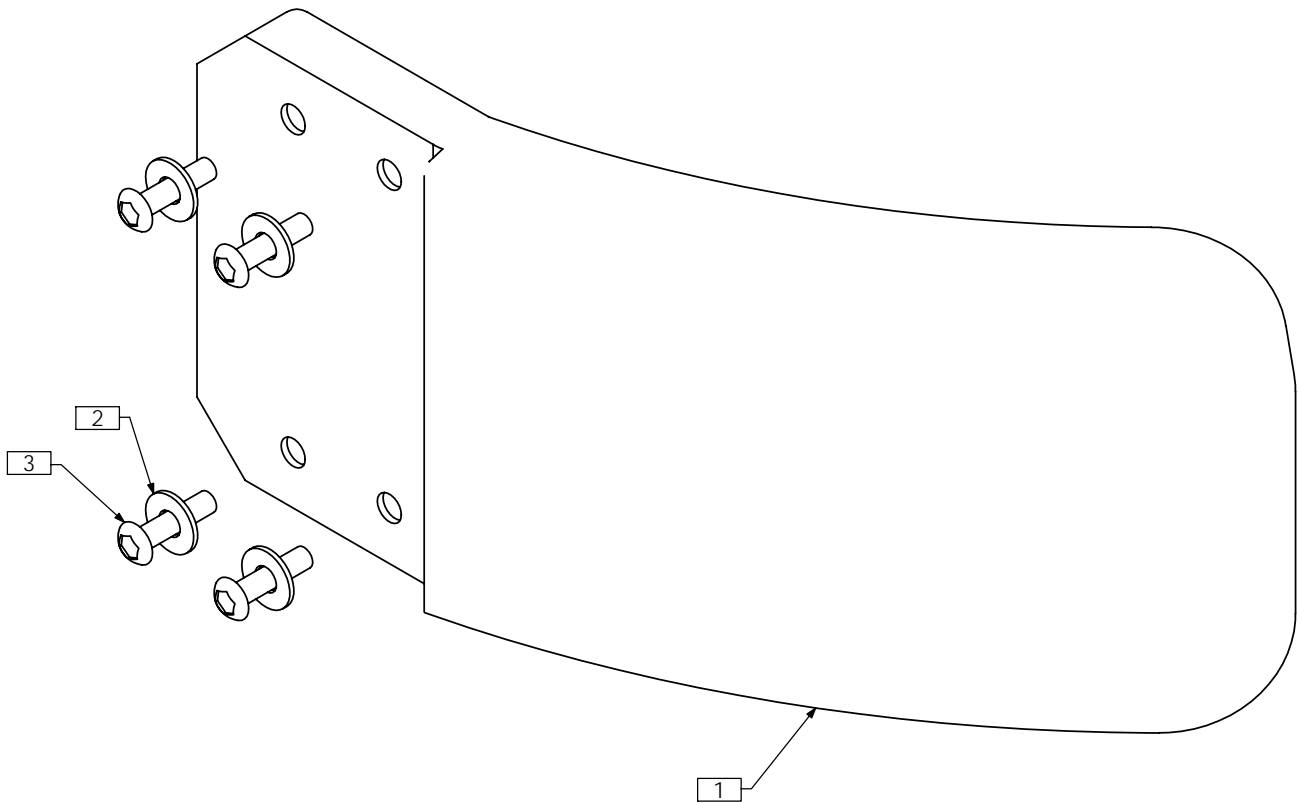


STANDARD APPLICATION WITH ARM PAD

NOTES:  
1. N/S = NOT SHOWN

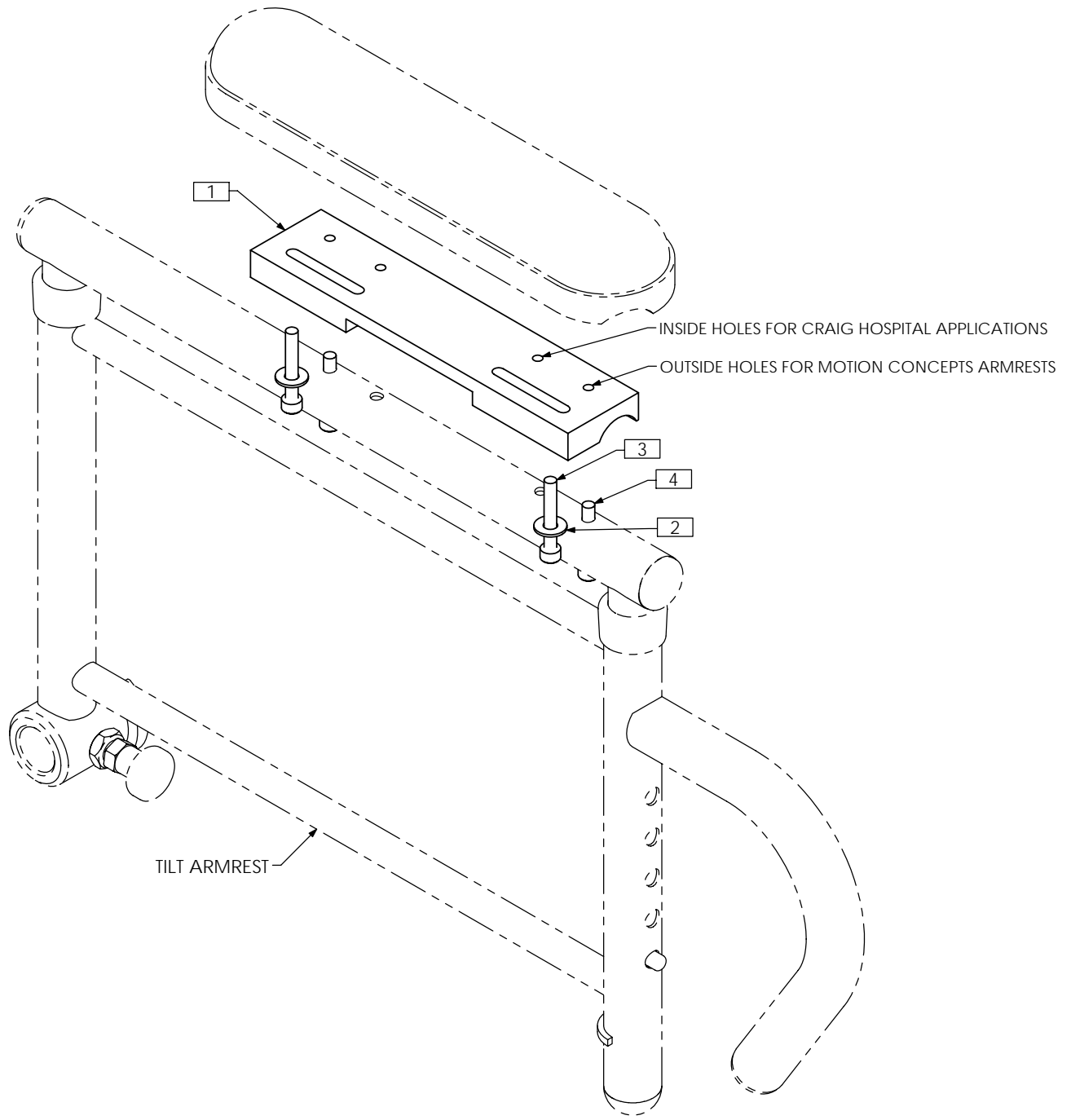
| ITEM NO. | QTY. | PART NO. | DESCRIPTION                           |
|----------|------|----------|---------------------------------------|
| 1        | 1    | TRX1199  | 4 INCH EXTENSION PLATE                |
| 2A       | 1    | TRX2579  | MULTI-RAIL, 65 DEG, LEFT              |
| 2B N/S   | 1    | TRX2578  | MULTI-RAIL, 65 DEG, RIGHT             |
| 2C N/S   | 1    | TRX3033  | MULTI-RAIL, 65 DEG, 12H - 13H         |
| 3A       | 1(2) | TRX2273  | ADAPTER BRKT, SLOTTED                 |
| 3B N/S   | 1    | TRX2413  | 4 INCH "L" BRACKET                    |
| 4        | 1    | TRX2274  | ADAPTER BRKT, 1/4-20                  |
| 5 N/S    | 1    | TRM0308  | NEOPRENE SLEEVE                       |
| 6A       | 1(2) | TRM0337  | PAD, MEDIUM                           |
| 6B N/S   | 1    | TRM0336  | PAD, SMALL                            |
| 6C N/S   | 1    | TRM0338  | PAD, LARGE                            |
| 6D N/S   | 1    | TRM0542  | PAD, EXTRA SMALL                      |
| 7        | 2    | TRH0232  | 1/4-20 SQUARE NUT                     |
| 8        | 2(4) | TRH0308  | 1/4-20 x 5/8" BUTTON SOCKET CAP SCREW |
| 9        | 4    | TRH0429  | 1/4-20 x 1/2" BUTTON SOCKET CAP SCREW |
| 10       | 0(2) | TRH0445  | 1/4-20 x 3/4" BUTTON SOCKET CAP SCREW |
| 11       | 2    | TRH0457  | 1/4-20 x 3/8" BUTTON SOCKET CAP SCREW |

# TRC0604 - FIXED LATERALS ASS'Y, ELITE POSTURE BACK



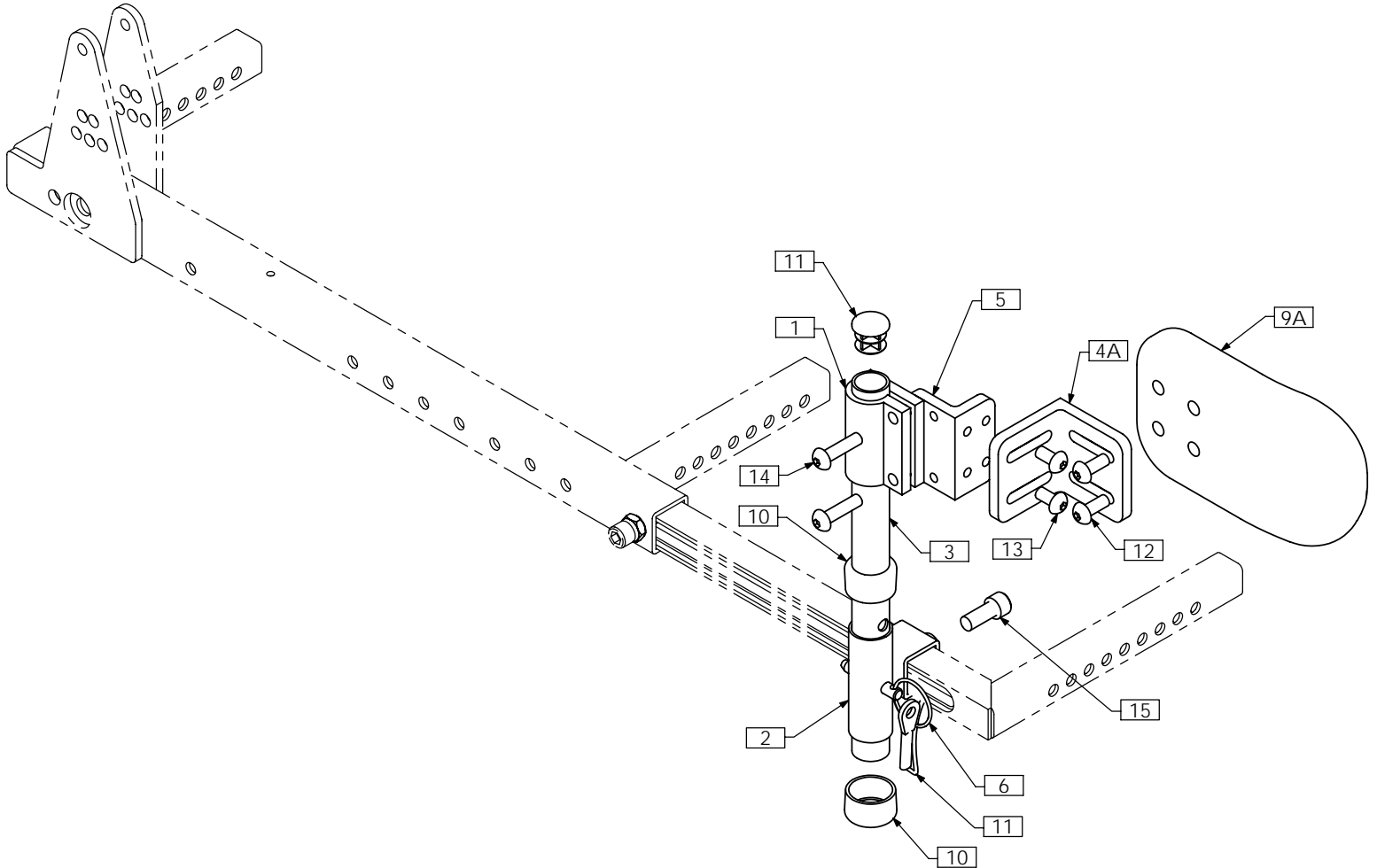
| ITEM NO. | QTY. | PART NO. | DESCRIPTION                           |
|----------|------|----------|---------------------------------------|
| 1        | 1    | TRM0569  | LATERAL PAD                           |
| 2        | 4    | TRH0114  | 3/16" FLAT WASHER                     |
| 3        | 4    | TRH0406  | #10-32 x 3/4" BUTTON SOCKET CAP SCREW |

# TRC0523 - MULTI PURPOSE ARM PAD ADAPTER BLOCK



| ITEM NO. | QTY. | PART NO. | DESCRIPTION                               |
|----------|------|----------|---|
| 1        | 1    | TRX3021  | MULTI PURPOSE ARM PAD ADAPTER BLOCK       |
| 2        | 2    | TRH0114  | 3/16" FLAT WASHER                         |
| 3        | 2    | TRH0337  | #10-32 x 1¼" SOCKET HEAD CAP SCREW GR8    |
| 4        | 2    | TRH0566  | #10-32 x 1-1/8" SOCKET HEAD CAP SCREW GR8 |

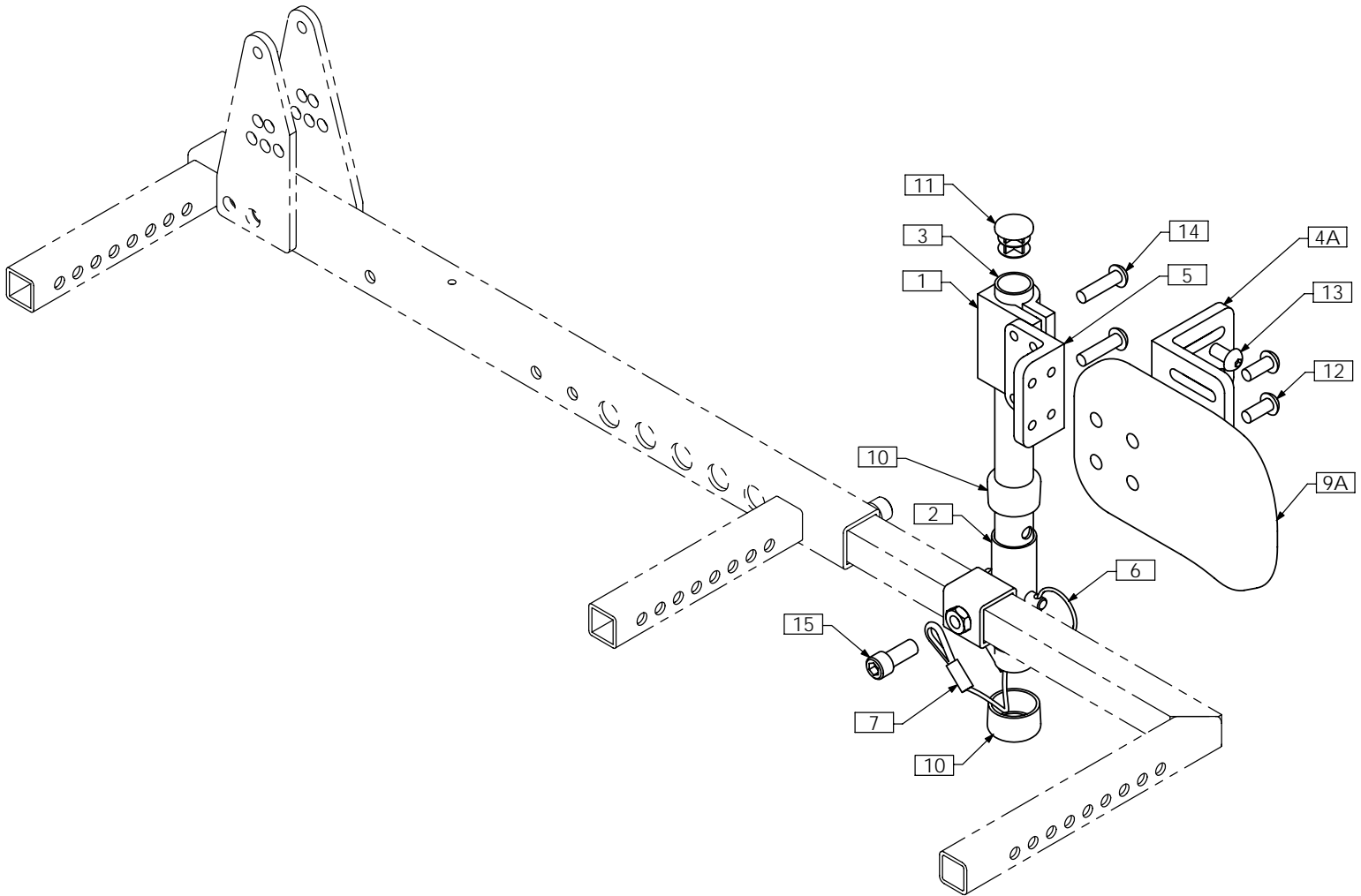
# TRC0543 - KNEE ADDUCTOR ASS'Y, RIGHT



NOTES:  
1. N/S = NOT SHOWN

| ITEM NO. | QTY. | PART NO. | DESCRIPTION           | ITEM NO. | QTY. | PART NO. | DESCRIPTION                              |
|----------|------|----------|-----------------------|----------|------|----------|--|
| 1        | 1    | TRX0762  | CLAMPING BLOCK        | 9B N/S   | 1    | TRM0337  | PAD, MEDIUM                              |
| 2        | 1    | TRX3010  | RECEIVER WLD          | 9C N/S   | 1    | TRM0338  | PAD, LARGE                               |
| 3        | 1    | TRX3013  | ADDUCTOR POST         | 9D N/S   | 1    | TRM0542  | PAD, EXTRA SMALL                         |
| 4A       | 1    | TRX2273  | ADAPTER BRKT, SLOTTED | 10       | 2    | TRM0431  | REDUCER CAP, 7/8" - 3/4"                 |
| 4B N/S   | 1    | TRX2413  | 4 INCH "L" BRACKET    | 11       | 1    | TRM0561  | 3/4" ROUND FLAT ROD CAP                  |
| 5        | 1    | TRX3384  | ADAPTER BRKT, 1/4-20  | 12       | 2    | TRH0308  | 1/4-20 x 5/8" BUTTON SOCKET CAP SCREW    |
| 6        | 1    | TRM0103  | PULL PIN              | 13       | 2    | TRH0429  | 1/4-20 x 1/2" BUTTON SOCKET CAP SCREW    |
| 7        | 1    | TRM0231  | NYLON LANYARD         | 14       | 2    | TRH0450  | 1/4-20 x 1" BUTTON SOCKET CAP SCREW      |
| 8 N/S    | 1    | TRM0308  | NEOPRENE SLEEVE       | 15       | 1    | TRH0517  | 5/16-24 x 3/4" SOCKET HEAD CAP SCREW GR8 |
| 9A       | 1    | TRM0336  | PAD, SMALL            |          |      |          |  |

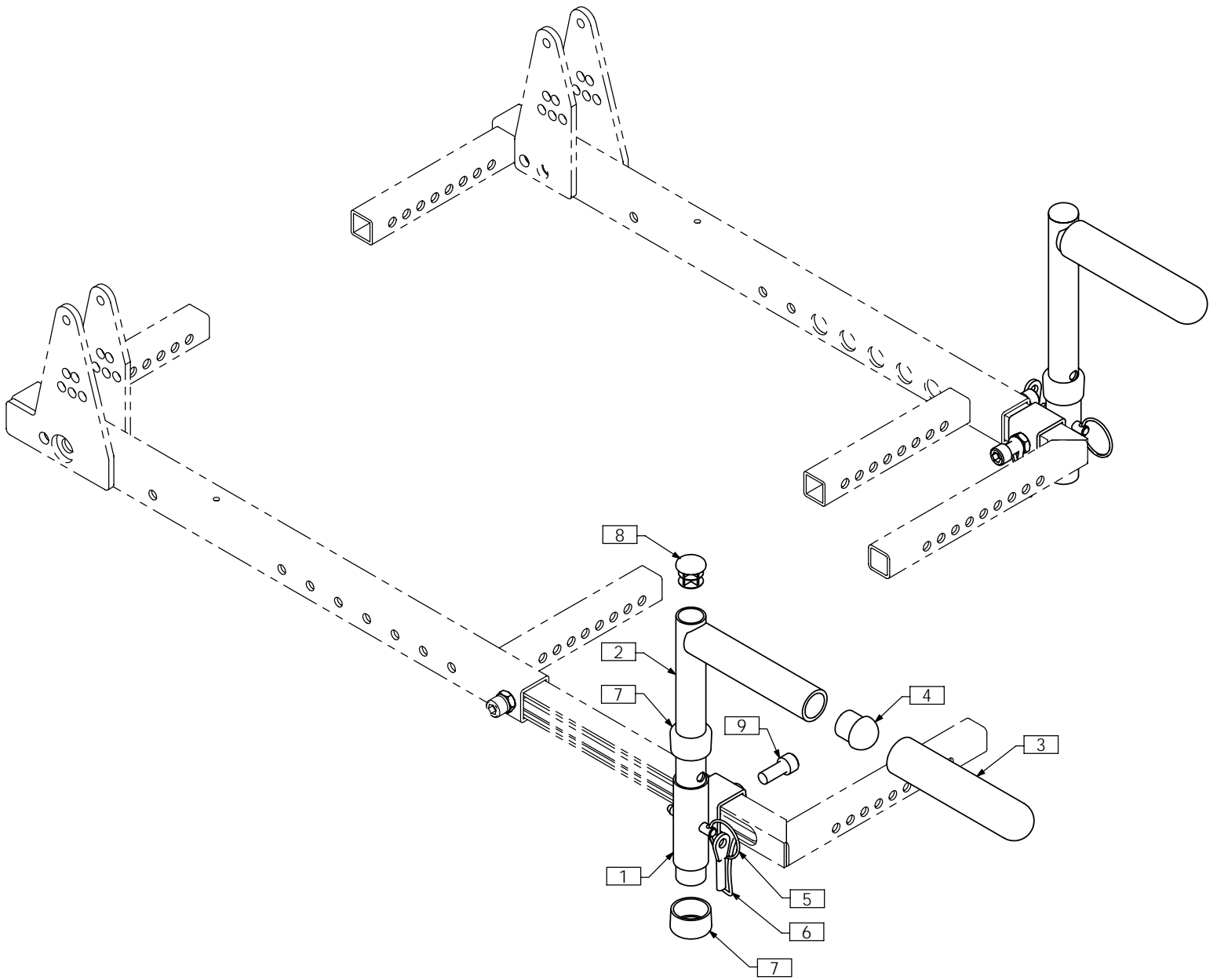
# TRC0544 - KNEE ADDUCTOR ASS'Y, LEFT



NOTES:  
1. N/S = NOT SHOWN

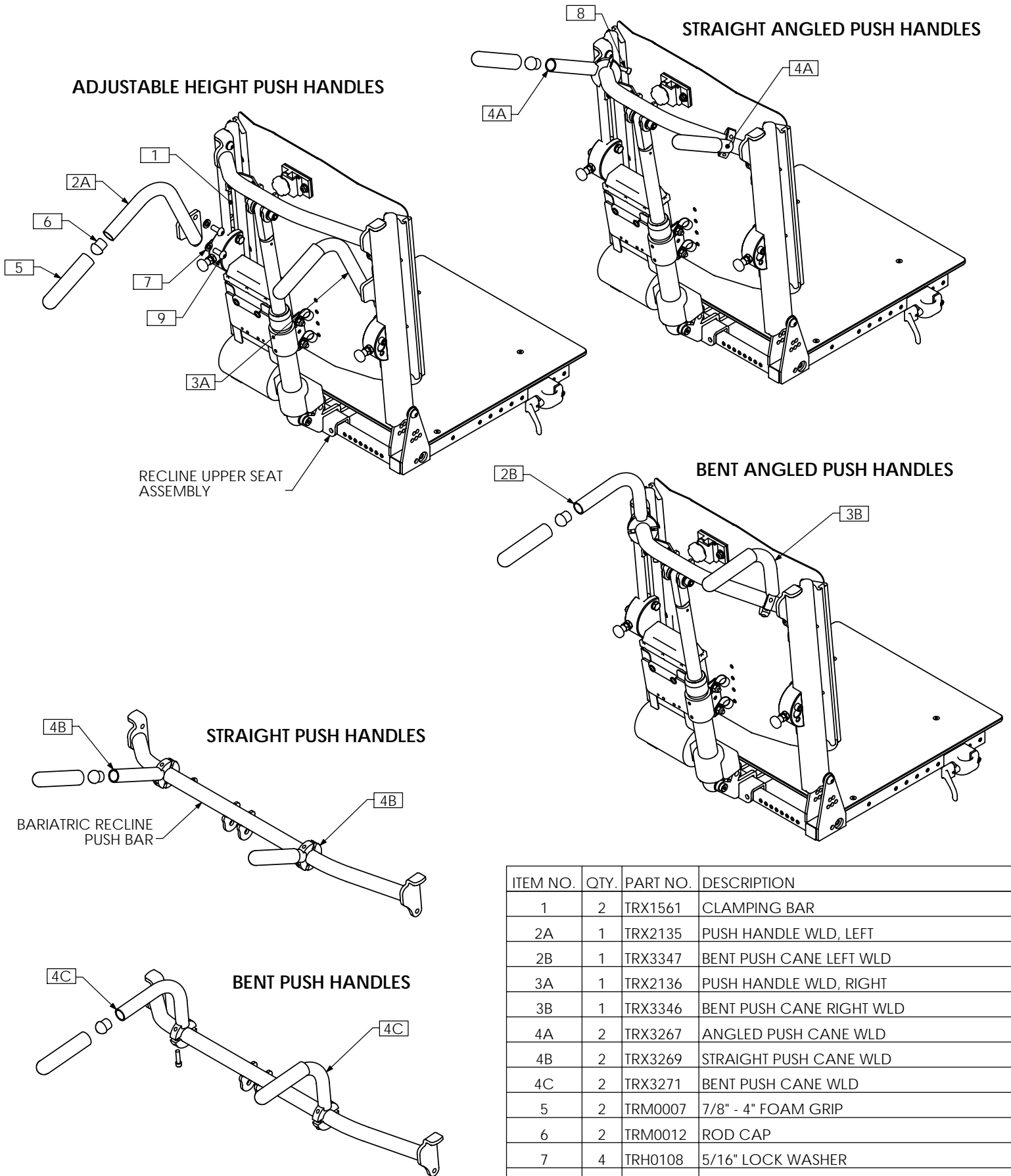
| ITEM NO. | QTY. | PART NO. | DESCRIPTION           | ITEM NO. | QTY. | PART NO. | DESCRIPTION                              |
|----------|------|----------|-----------------------|----------|------|----------|--|
| 1        | 1    | TRX0762  | CLAMPING BRKT         | 9B N/S   | 1    | TRM0337  | PAD, MEDIUM                              |
| 2        | 1    | TRX3010  | RECEIVER WLD          | 9C N/S   | 1    | TRM0338  | PAD, LARGE                               |
| 3        | 1    | TRX3013  | ADDUCTOR POST         | 9D N/S   | 1    | TRM0542  | PAD, EXTRA SMALL                         |
| 4A       | 1    | TRX2273  | ADAPTER BRKT, SLOTTED | 10       | 2    | TRM0431  | REDUCER CAP, 7/8" - 3/4"                 |
| 4B N/S   | 1    | TRX2413  | 4 INCH "L" BRACKET    | 11       | 1    | TRM0561  | 3/4" ROUND FLAT ROD CAP                  |
| 5        | 1    | TRX3384  | ADAPTER BRKT, 1/4-20  | 12       | 2    | TRH0308  | 1/4-20 x 5/8" BUTTON SOCKET CAP SCREW    |
| 6        | 1    | TRM0103  | PULL PIN              | 13       | 2    | TRH0429  | 1/4-20 x 1/2" BUTTON SOCKET CAP SCREW    |
| 7        | 1    | TRM0231  | NYLON LANYARD         | 14       | 2    | TRH0450  | 1/4-20 x 1" BUTTON SOCKET CAP SCREW      |
| 8 N/S    | 1    | TRM0308  | NEOPRENE SLEEVE       | 15       | 1    | TRH0517  | 5/16-24 x 3/4" SOCKET HEAD CAP SCREW GR8 |
| 9A       | 1    | TRM0336  | PAD, SMALL            |          |      |          |  |

# TRC0545 - TRANSFER HANDLE ASS'Y



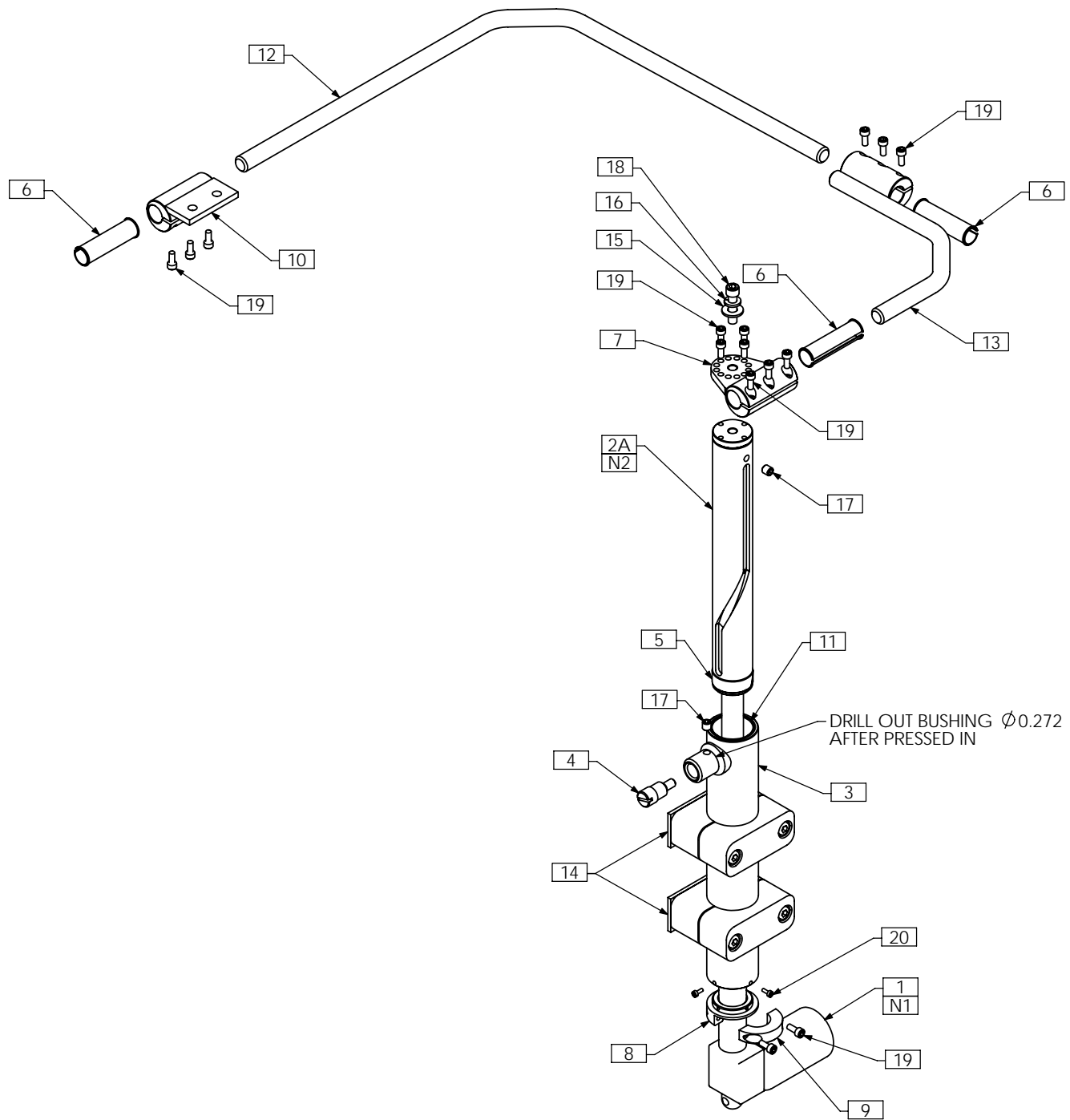
| ITEM NO. | QTY. | PART NO. | DESCRIPTION                              |
|----------|------|----------|--|
| 1        | 2    | TRX3010  | RECEIVER WLD                             |
| 2        | 2    | TRX3014  | HANDLE WLD                               |
| 3        | 2    | TRM0007  | 7/8" - 4" FOAM GRIP                      |
| 4        | 2    | TRM0012  | ROD CAP                                  |
| 5        | 2    | TRM0103  | PULL PIN                                 |
| 6        | 2    | TRM0231  | NYLON LANYARD                            |
| 7        | 4    | TRM0431  | REDUCER CAP, 7/8" - 3/4"                 |
| 8        | 2    | TRM0561  | 3/4" ROUND FLAT ROD CAP                  |
| 9        | 2    | TRH0517  | 5/16-24 x 3/4" SOCKET HEAD CAP SCREW GR8 |

# TRC0507 - PUSH HANDLE ASS'Y, RECLINE



| ITEM NO. | QTY. | PART NO. | DESCRIPTION                            |
|----------|------|----------|--|
| 1        | 2    | TRX1561  | CLAMPING BAR                           |
| 2A       | 1    | TRX2135  | PUSH HANDLE WLD, LEFT                  |
| 2B       | 1    | TRX3347  | BENT PUSH CANE LEFT WLD                |
| 3A       | 1    | TRX2136  | PUSH HANDLE WLD, RIGHT                 |
| 3B       | 1    | TRX3346  | BENT PUSH CANE RIGHT WLD               |
| 4A       | 2    | TRX3267  | ANGLED PUSH CANE WLD                   |
| 4B       | 2    | TRX3269  | STRAIGHT PUSH CANE WLD                 |
| 4C       | 2    | TRX3271  | BENT PUSH CANE WLD                     |
| 5        | 2    | TRM0007  | 7/8" - 4" FOAM GRIP                    |
| 6        | 2    | TRM0012  | ROD CAP                                |
| 7        | 4    | TRH0108  | 5/16" LOCK WASHER                      |
| 8        | 4    | TRH0335  | 1/4-20 x 1" SOCKET HEAD CAP SCREW GR8  |
| 9        | 4    | TRH0421  | 5/16-18 x 3/4" BUTTON SOCKET CAP SCREW |

# TRC0401 - SWING AWAY CHIN CONTROL

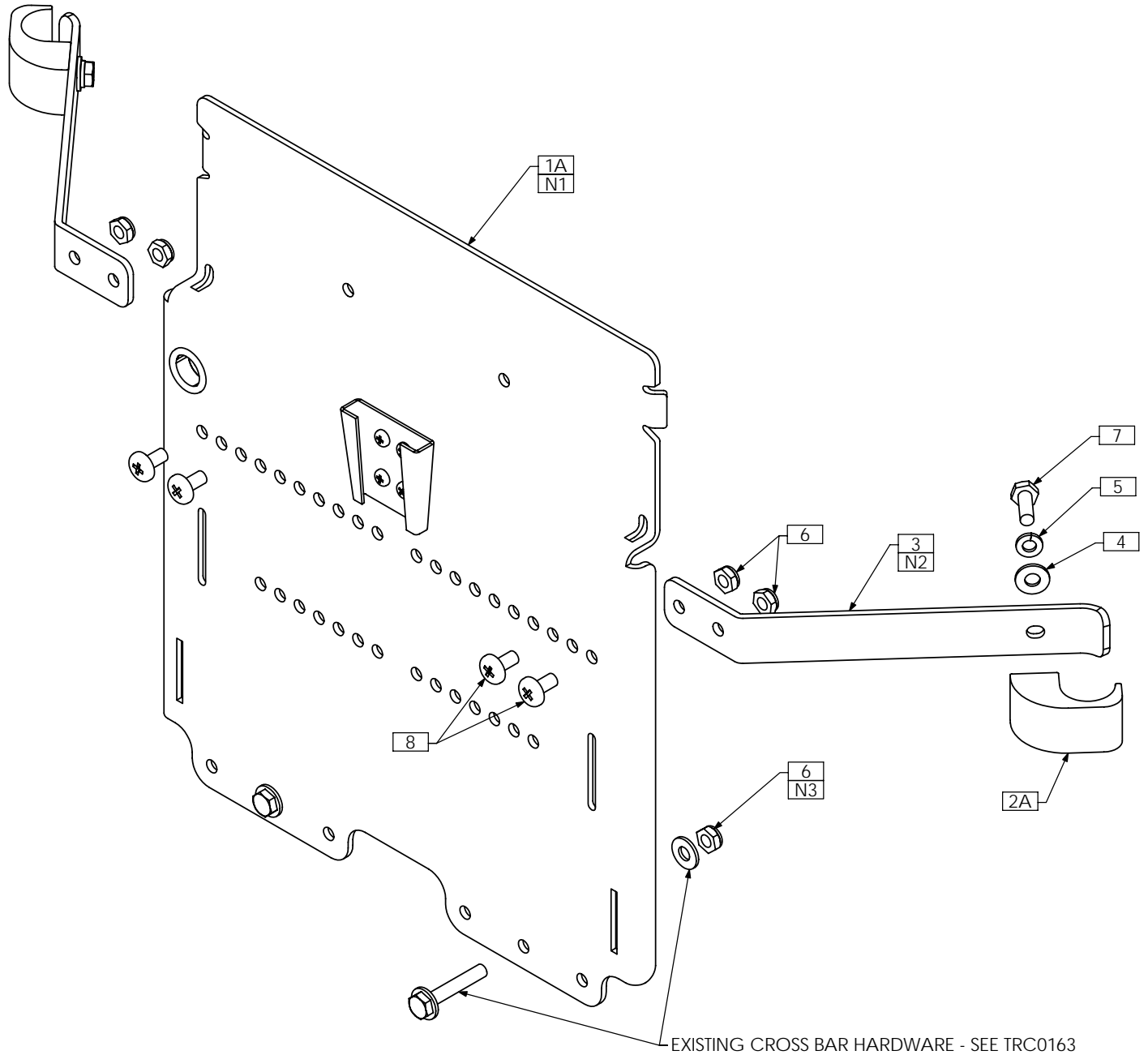


**NOTES:**

1. ALUMINUM ACTUATOR BARREL TO BE MODIFIED AS PER TRX2305
2. ASSEMBLE UP THROUGH THE BOTTOM OF THE CAM HOUSING - BEFORE ACTUATOR. RIGHT-HAND VERSION SHOWN SHOWN AS IS FOR BILL OF MATERIAL PURPOSES ONLY

| ITEM NO. | QTY. | PART NO. | DESCRIPTION             | ITEM NO. | QTY. | PART NO. | DESCRIPTION                                   |
|----------|------|----------|-------------------------|----------|------|----------|---|
| 1        | 1    | TRA0205  | ACTUATOR                | 11       | 1    | TRX2228  | CAM HOUSING BUSHING                           |
| 2A       | 1    | TRX2085  | CAM WLD                 | 12       | 1    | TRX2229  | CONTROL BAR                                   |
| 2B N/S   | 1    | TRX3208  | CAM WLD, LEFT           | 13       | 1    | TRX2646  | RECEIVER WLD                                  |
| 3        | 1    | TRX2088  | CYLINDER WLD            | 14       | 2    | TRM0485  | PIPE CLAMP, 1 1/2", STAUFF No. - SP 538-PP IS |
| 4        | 1    | TRX2089  | CAM PIN                 | 15       | 1    | TRH0101  | 1/4" FLAT WASHER                              |
| 5        | 1    | TRX2090  | CYLINDER CAM RING       | 16       | 1    | TRH0115  | 1/4" LOCK WASHER                              |
| 6        | 3    | TRX2099  | CLAMP BUSHING           | 17       | 2    | TRH0336  | SET SCREW, 0.25 x 0.25                        |
| 7        | 1    | TRX2100  | CONTROL ARM BRACKET WLD | 18       | 1    | TRH0350  | 1/4-28 x 1" SOCKET HEAD CAP SCREW GR8         |
| 8        | 1    | TRX2224  | ACTUATOR COLLAR         | 19       | 15   | TRH0522  | #8-32 x 3/8" SOCKET HEAD CAP SCREW GR8        |
| 9        | 1    | TRX2225  | ACTUATOR CLAMP          | 20       | 4    | TRH0534  | #4-40 x 1/4" SOCKET HEAD CAP SCREW GR8        |
| 10       | 1    | TRX2226  | CHIN CONTROL CLAMP WLD  |          |      |          |   |

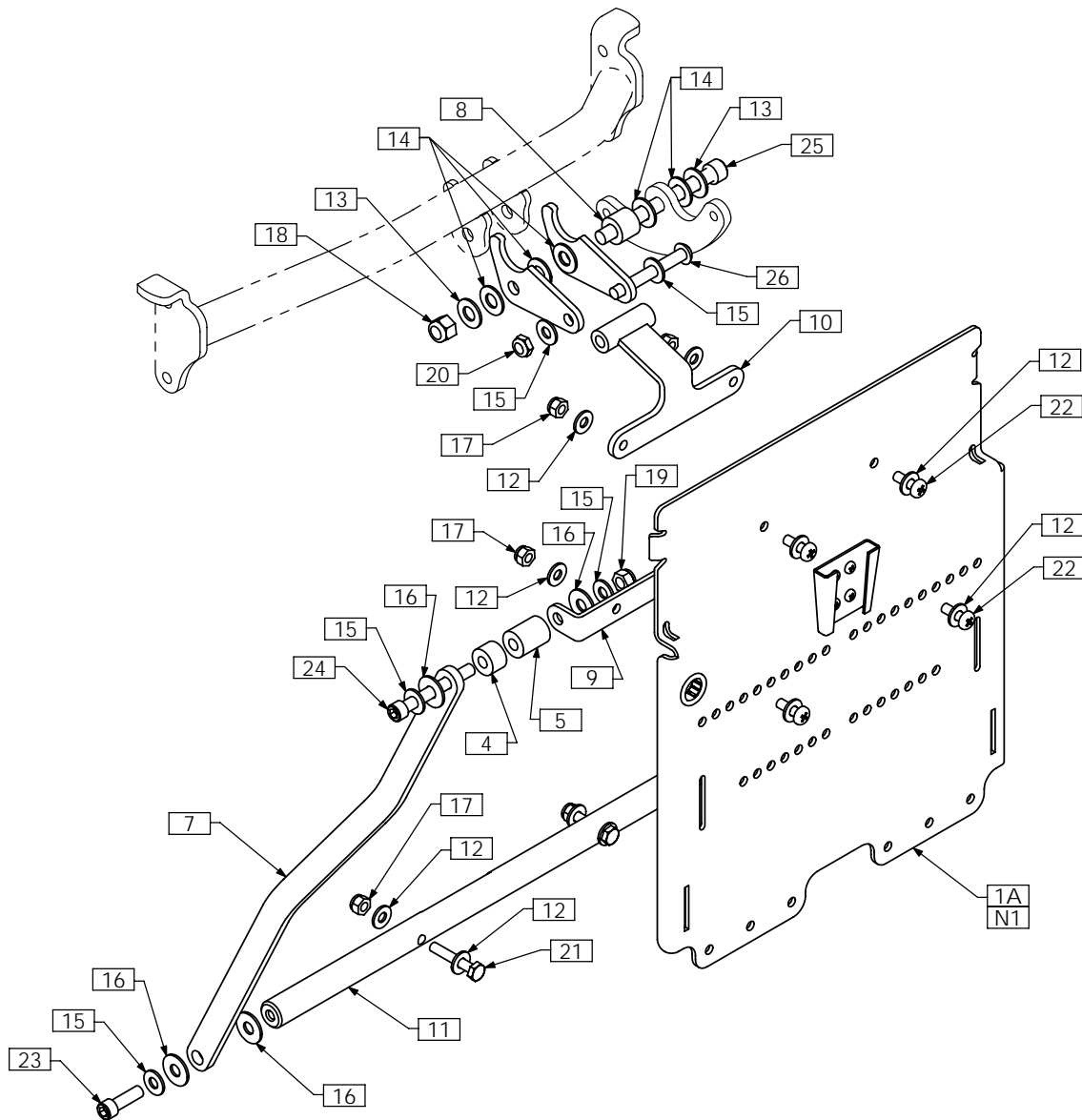
# TRC0368 - LTV COMPACT VENT ASS'Y, TILT-ONLY



- NOTES:  
 1. COVER NOT SHOWN  
 2. MOUNTING STRAPS ARE LOCATED DURING THE UPPER SEAT ASSEMBLY. LOCATION DEPENDS ON BACK SIZE  
 3. USE SHALLOW NUT AS REQUIRED TO REPLACE FULL NUT - SEE TRC0163

| ITEM NO. | QTY. | PART NO. | DESCRIPTION                                |
|----------|------|----------|--|
| 1A       | 1    | TRC0349  | LTV COMPACT VENT ASS'Y                     |
| 1B N/S   | 1    | TRC0566  | LTV COMPACT VENT ASS'Y, BACK PACK          |
| 2A       | 2    | TRX1198  | BACK CLAMP BLOCK, 1"                       |
| 2B N/S   | 2    | TRX1197  | BACK CLAMP BLOCK, 7/8"                     |
| 3        | 2    | TRX1805  | MOUNTING STRAP                             |
| 4        | 2    | TRH0101  | 1/4" FLAT WASHER                           |
| 5        | 2    | TRH0115  | 1/4" LOCK WASHER                           |
| 6        | 6    | TRH0202  | 1/4-20 SHALLOW NYLOC NUT                   |
| 7        | 2    | TRH0306  | 1/4-20 x 3/4" HEX HEAD CAP SCREW           |
| 8        | 4    | TRH0454  | 1/4-20 x 1/2" PHILLIPS TRUSS MACHINE SCREW |

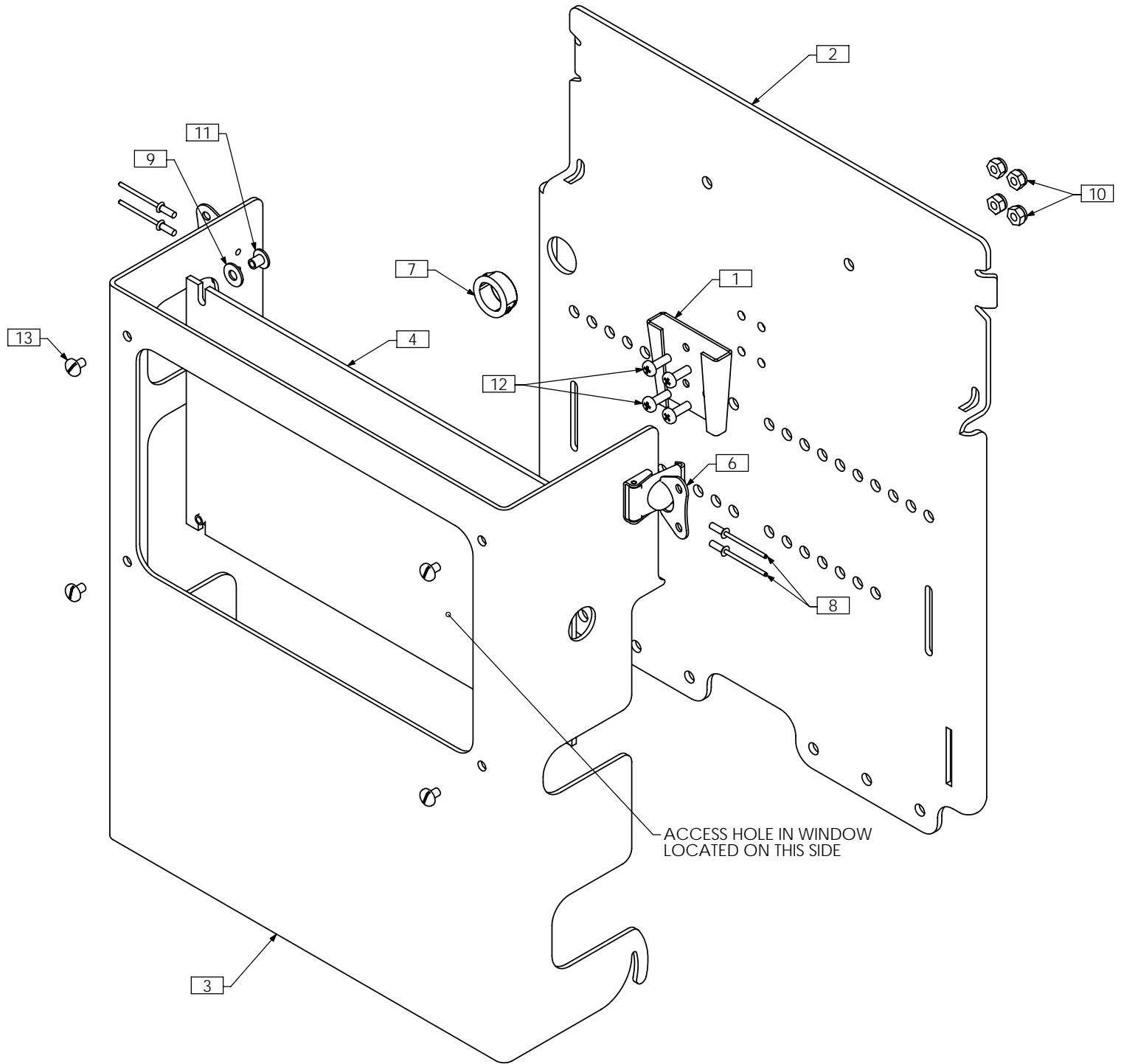
# TRC0567 - LTV COMPACT VENT ASS'Y, RECLINE AND ESR, LOW-PRO CGT



NOTES:  
1. COVER NOT SHOWN

| ITEM NO. | QTY. | PART NO.    | DESCRIPTION                       | ITEM NO. | QTY. | PART NO. | DESCRIPTION                             |
|----------|------|-------------|-----------------------------------|----------|------|----------|---|
| 1A       | 1    | TRC0349     | LTV COMPACT VENT ASS'Y            | 15       | 8    | TRH0107  | 5/16" FLAT WASHER                       |
| 1B N/S   | 1    | TRC0566     | LTV COMPACT VENT ASS'Y, BACK PACK | 16       | 8    | TRH0109  | 5/16" NYLON WASHER                      |
| 4        | 2    | TRX1256-050 | SPACER, 5/16 X 3/4                | 17       | 6    | TRH0201  | ¼-20 NYLOC NUT                          |
| 5        | 2    | TRX1256-097 | SPACER, 5/16 X 3/4                | 18       | 1    | TRH0204  | 3/8-16 NYLOC NUT                        |
| 6        | 2    | TRX1846     | PIVOT PLATE                       | 19       | 2    | TRH0206  | 5/16-18 NYLOC NUT                       |
| 7        | 2    | TRX1847     | STABILIZER ARM                    | 20       | 1    | TRH0207  | 5/16-18 SHALLOW NYLOC NUT               |
| 8        | 1    | TRX1850     | SPACER                            | 21       | 2    | TRH0301  | ¼-20 x 1½" HEX HEAD CAP SCREW           |
| 9        | 1    | TRX2077     | PIVOT BRACKET                     | 22       | 4    | TRH0307  | ¼-20 x ¾" PHILLIPS TRUSS MACHINE SCREW  |
| 10       | 1    | TRX2078     | HANGER BRACKET WLD                | 23       | 2    | TRH0317  | 5/16-18 x 1" SOCKET HEAD CAP SCREW GR8  |
| 11       | 1    | TRX2768     | LOWER PIVOT SHAFT                 | 24       | 2    | TRH0356  | 5/16-18 x 2½" SOCKET HEAD CAP SCREW GR8 |
| 12       | 12   | TRH0101     | ¼" FLAT WASHER                    | 25       | 1    | TRH0361  | 3/8-16 x 4" SOCKET HEAD CAP SCREW GR8   |
| 13       | 2    | TRH0104     | 3/8" FLAT WASHER                  | 26       | 1    | TRH0373  | 5/16-18 x 2½" BUTTON SOCKET CAP SCREW   |
| 14       | 5    | TRH0105     | 3/8" NYLON WASHER                 |          |      |          |   |

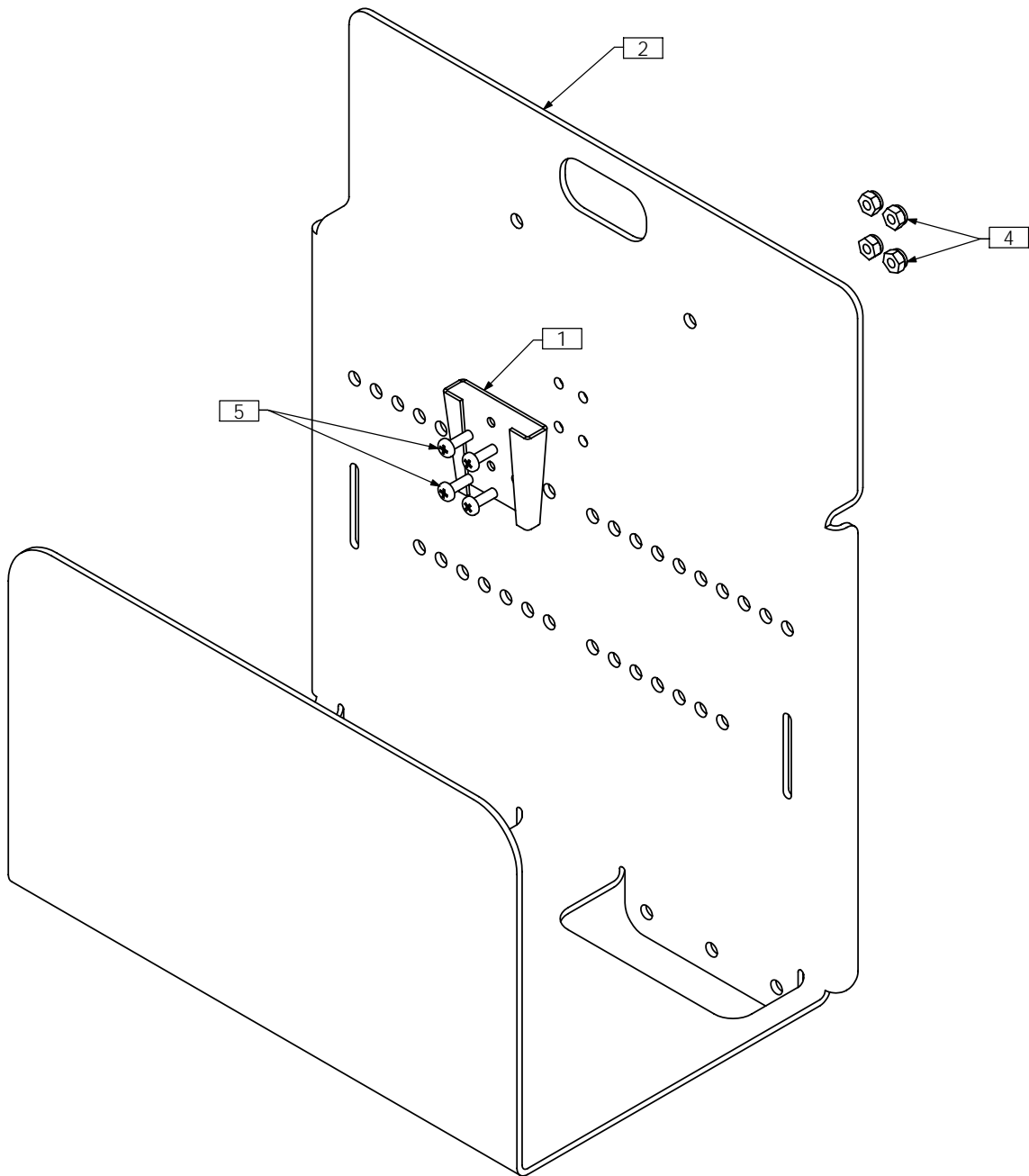
# TRC0349 - LTV COMPACT VENT ASS'Y



NOTES:  
1. N/S = NOT SHOWN

| ITEM NO. | QTY. | PART NO. | DESCRIPTION          | ITEM NO. | QTY. | PART NO. | DESCRIPTION                               |
|----------|------|----------|----------------------|----------|------|----------|---|
| 1        | 1    | TRX1719  | MOUNTING PLATE       | 8        | 4    | TRH0016  | 1/8" RIVET                                |
| 2        | 1    | TRX1803  | BACK PLATE           | 9        | 4    | TRH0114  | 3/16" FLAT WASHER                         |
| 3        | 1    | TRX1804  | COVER                | 10       | 4    | TRH0223  | #8-32 NYLOC NUT                           |
| 4        | 1    | TRX1806  | WINDOW               | 11       | 4    | TRH0234  | #8-32 x 1/4" BINDER POST NUT              |
| 5 N/S    | 1    | TRM0227  | BATTERY STRAP        | 12       | 4    | TRH0407  | #8-32 x 1/2" PHILLIPS TRUSS MACHINE SCREW |
| 6        | 2    | TRM0416  | ROTARY LATCH         | 13       | 4    | TRH0505  | #8-32 x 1/4" SLOT TRUSS MACHINE SCREW     |
| 7        | 1    | TRM0417  | 5/8" ID WIRE GROMMET |          |      |          |   |

# TRC0566 - LTV COMPACT VENT ASS'Y, BACK PACK



NOTES:  
1. N/S = NOT SHOWN

| ITEM NO. | QTY. | PART NO. | DESCRIPTION                               |
|----------|------|----------|---|
| 1        | 1    | TRX1719  | MOUNTING PLATE                            |
| 2        | 1    | TRX3145  | TBS BACK PLATE                            |
| 3 N/S    | 1    | TRM0227  | BATTERY STRAP                             |
| 4        | 4    | TRH0223  | #8-32 NYLOC NUT                           |
| 5        | 4    | TRH0407  | #8-32 x 1/2" PHILLIPS TRUSS MACHINE SCREW |