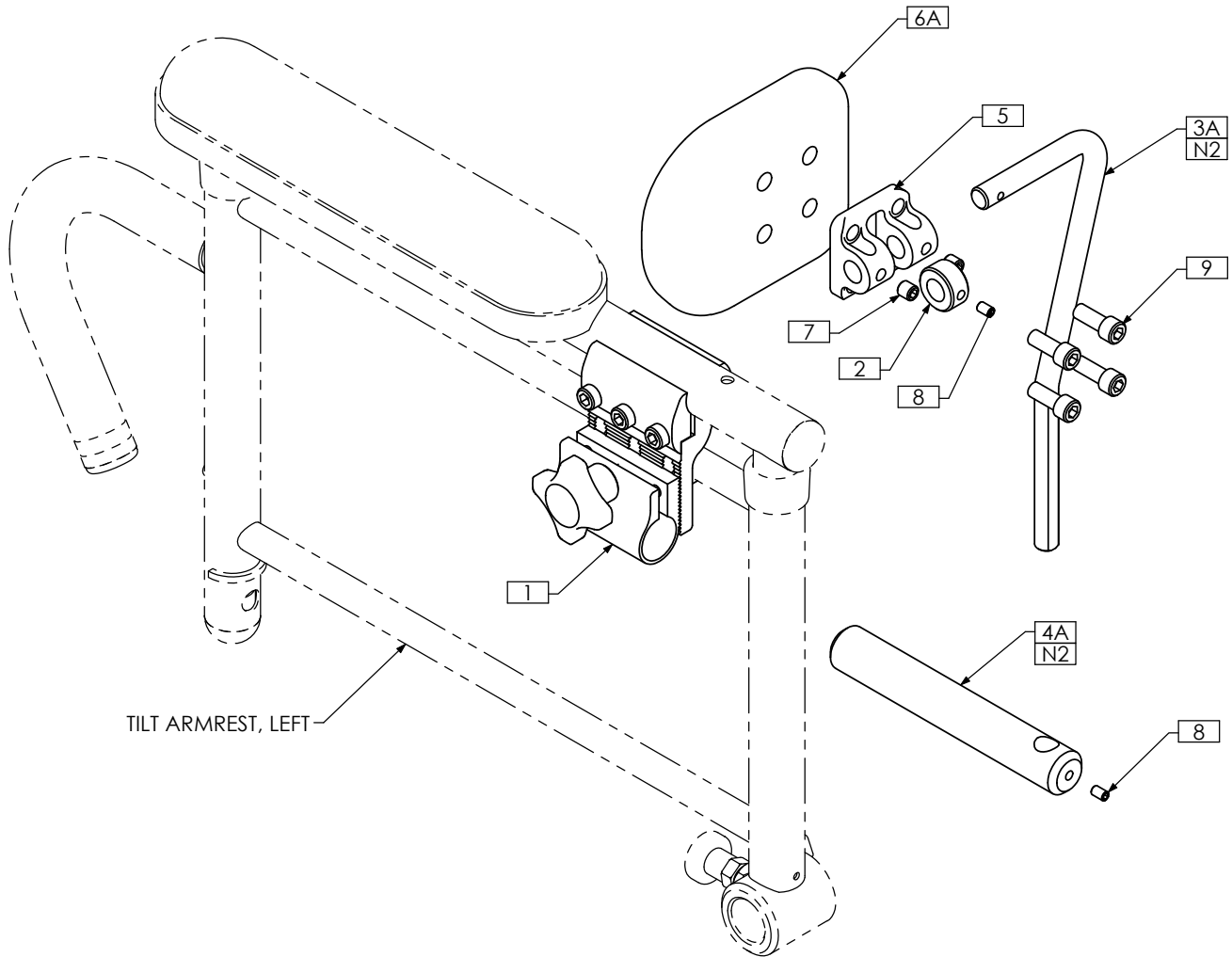


# TRC0521 - TRICEP ARM BLOCK, LEFT

REVISION: 04/23/2008



**NOTES:**

- 1. N/S = NOT SHOWN
- 2. USE ITEM 3B AND 4B FOR 2" TALLER/2" DEEPER APPLICATIONS

ITEM NO.	QTY.	PART NO.	DESCRIPTION
1	1	TRC0405	JOYSTICK CLAMP ASS'Y, 3/4"
2	1	TRX3160	PIVOT COLLAR
3A	1	TRX3161	VERTICAL BAR, 3"
3B N/S	1	TRX4073	VERTICAL BAR, 5"
4A	1	TRX3162-1	HORIZONTAL BAR, 5"
4B N/S	1	TRX3162-2	HORIZONTAL BAR, 7"
5	1	TRX3229	PIVOT BRACKET
6A	1	TRM0542	PAD, EXTRA SMALL - 3" x 4"
6B N/S	1	TRM0336	PAD, SMALL - 3½" x 5"
6C N/S	1	TRM0337	PAD, MEDIUM - 3¾" x 5¾"
6D N/S	1	TRM0338	PAD, LARGE - 4½" x 6¼"
7	2	TRH0336	SET SCREW, 0.25 x 0.25
8	2	TRH0501	#10-32 x ¼" HEX SOCKET SET SCREW
9	4	TRH0569	¼-20 x 5/8" SOCKET HEAD CAP SCREW GR8