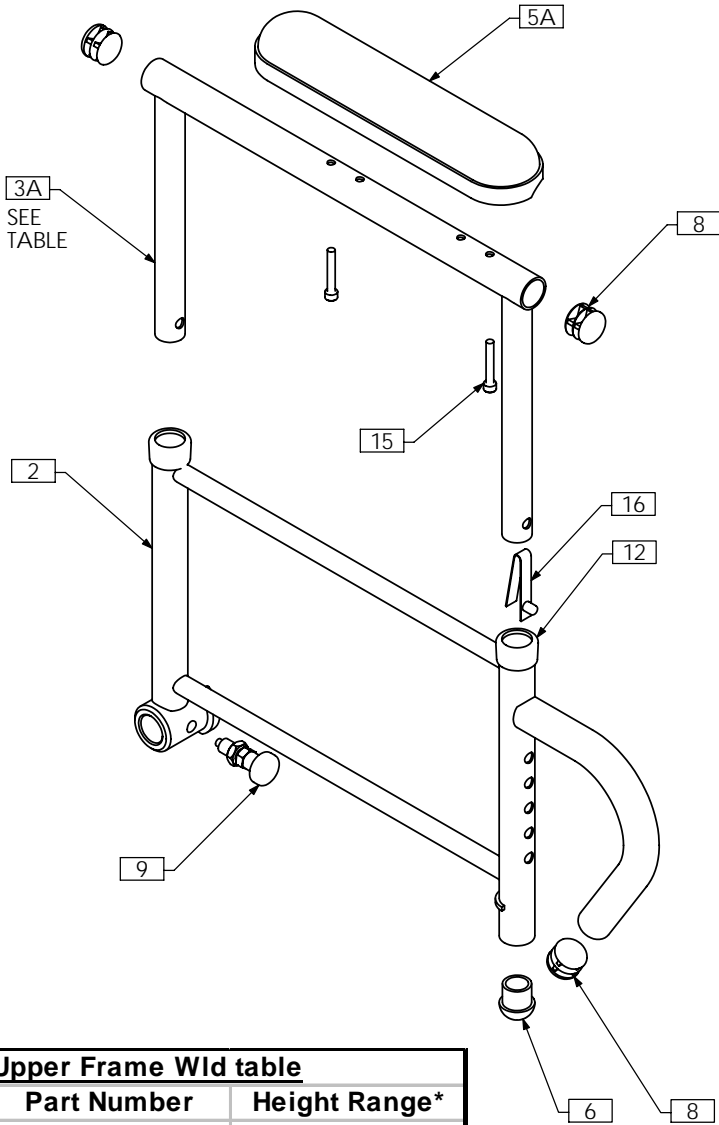


A R M R E S T S
E T C

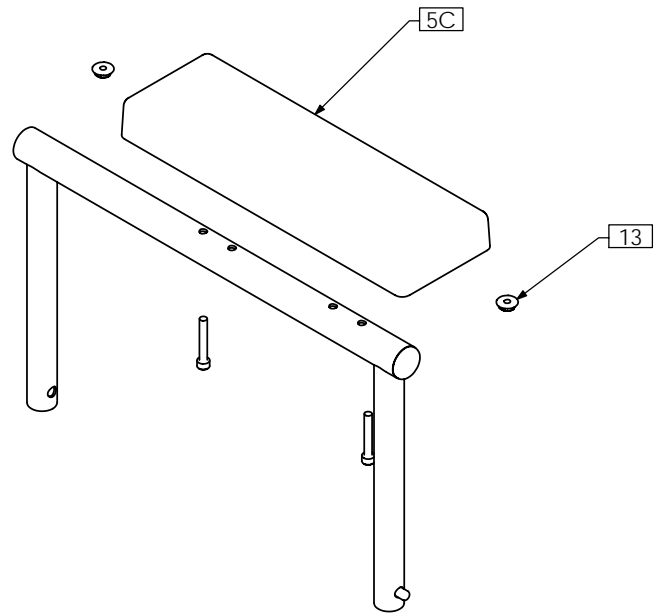


TRC0458 - TILT ARM REST ASS'Y, RIGHT

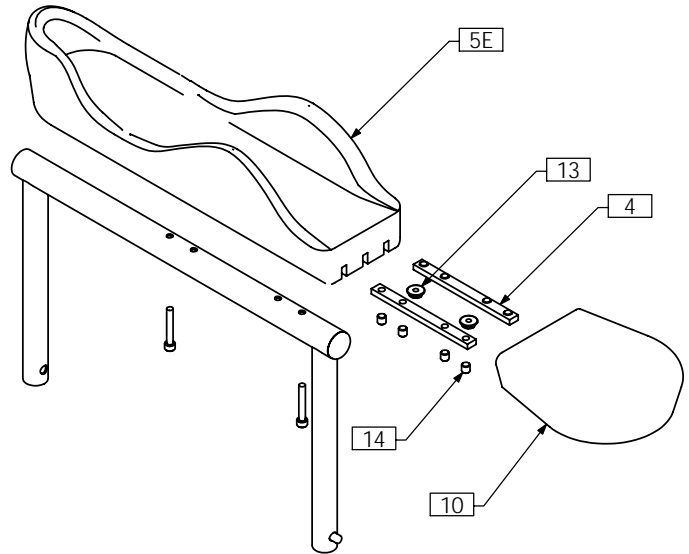
STANDARD ARM PAD



FLAT ARM PAD - NOTE 2



CONTOUR ARM TROUGH - NOTE 2



Upper Frame Wld table

Part Number	Height Range*
TRX1553	9 ³ / ₄ " to 12 ³ / ₄ "
TRX2715	12 ³ / ₄ " to 15 ³ / ₄ "
TRX1663	15 ³ / ₄ " to 18 ³ / ₄ "

*MEASURED FROM TOP OF SEAT PAN TO TOP OF STANDARD ARM PAD

NOTES:

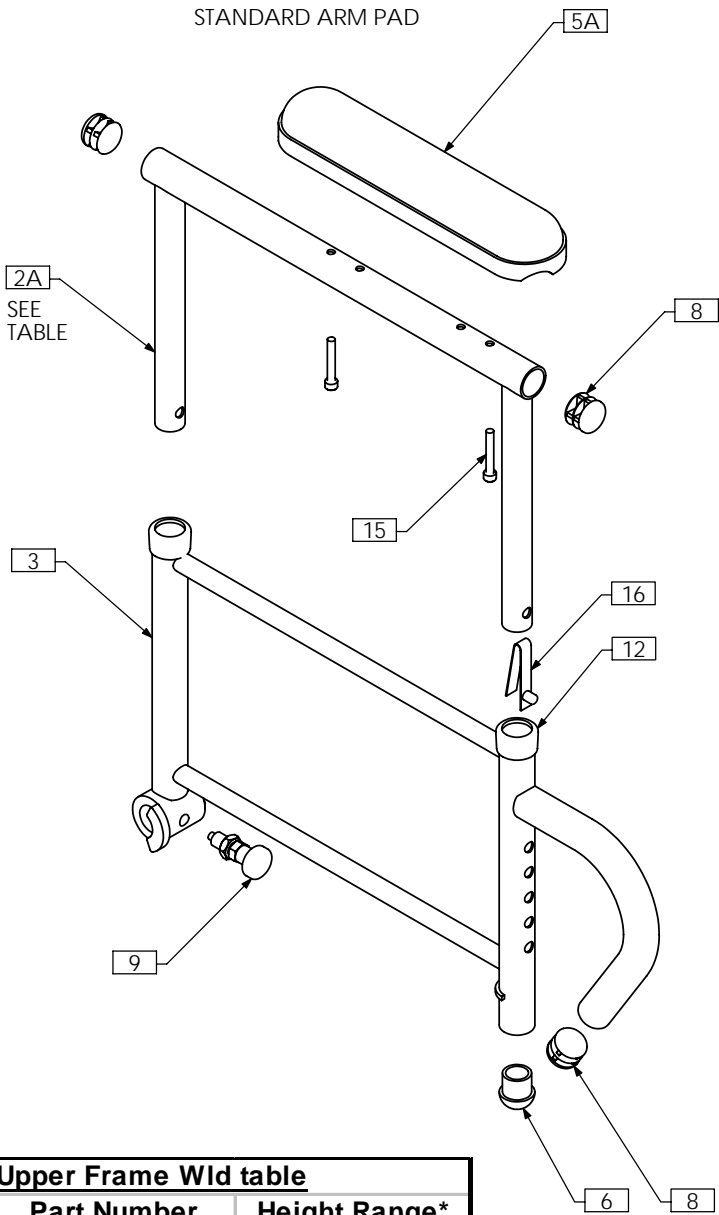
1. N/S = NOT SHOWN

2. OPTIONAL - AS PER ORDER

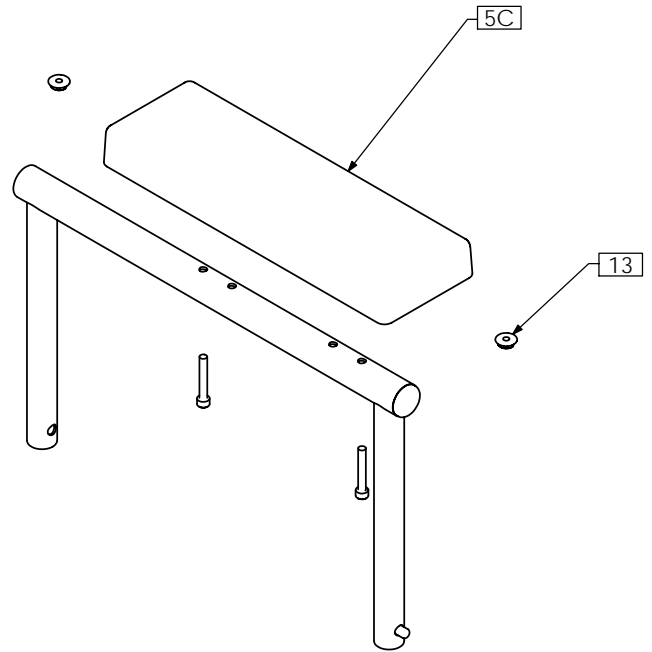
ITEM NO.	QTY.	PART NO.	DESCRIPTION	ITEM NO.	QTY.	PART NO.	DESCRIPTION
1A N/S	1	TRX0352	ARMREST EXTENSION	6	1	TRM0012	ROD CAP
1B N/S	1	TRX1549	ARMREST EXTENSION	7 N/S	1	TRM0100	FOAM GRIP 8"
2	1	TRX1550	LOWER FRAME WLD	8	3	TRM0130	7/8" ROUND FLAT ROD CAP
3A	1	TRX1553	UPPER FRAME WLD	9	1	TRM0214	PLUNGER
3B N/S	1	TRX2715	MEDIUM UPPER FRAME WLD	10	1	TRM0325	FLAT HAND PAD
3C N/S	1	TRX1663	EXTENDED UPPER FRAME WLD	11 N/S	1	TRM0390	LARGE ARM COVER WRAP
4	2	TRX1644	CLAMPING BAR	12	2	TRM0431	REDUCER CAP, 7/8" - 3/4"
5A	1	TRM0019	STANDARD ARM PAD - DESK LENGTH	13	2	TRH0209	#10-32 HEX FLANGE NUT
5B N/S	1	TRM0013	STANDARD ARM PAD - FULL LENGTH	14	8	TRH0336	SET SCREW, 0.25 x 0.25
5C	1	TRM0002	FLAT ARM PAD - DESK LENGTH	15	2	TRH0337	#10-32 x 1 1/4" SOCKET HEAD CAP SCREW GR8
5D N/S	1	TRM0003	FLAT ARM PAD - FULL LENGTH	16	1	TTM0047	SNAP BUTTON
5E	1	TRM0324	CONTOUR ARM TROUGH - RIGHT				

TRC0459 - TILT ARM REST ASS'Y, LEFT

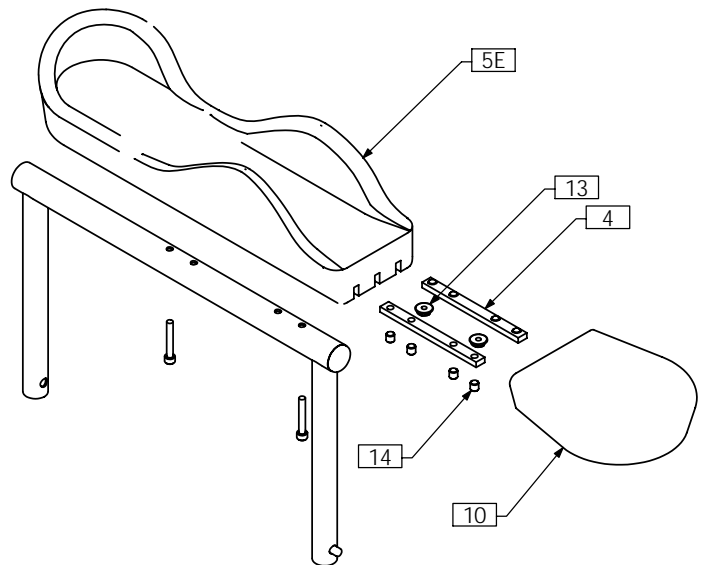
STANDARD ARM PAD



FLAT ARM PAD - NOTE 2



CONTOUR ARM TROUGH - NOTE 2



Upper Frame Wld table

Part Number	Height Range*
TRX1553	9¾" to 12¾"
TRX2715	12¾" to 15¾"
TRX1663	15¾" to 18¾"

*MEASURED FROM TOP OF SEAT PAN TO TOP OF STANDARD ARM PAD

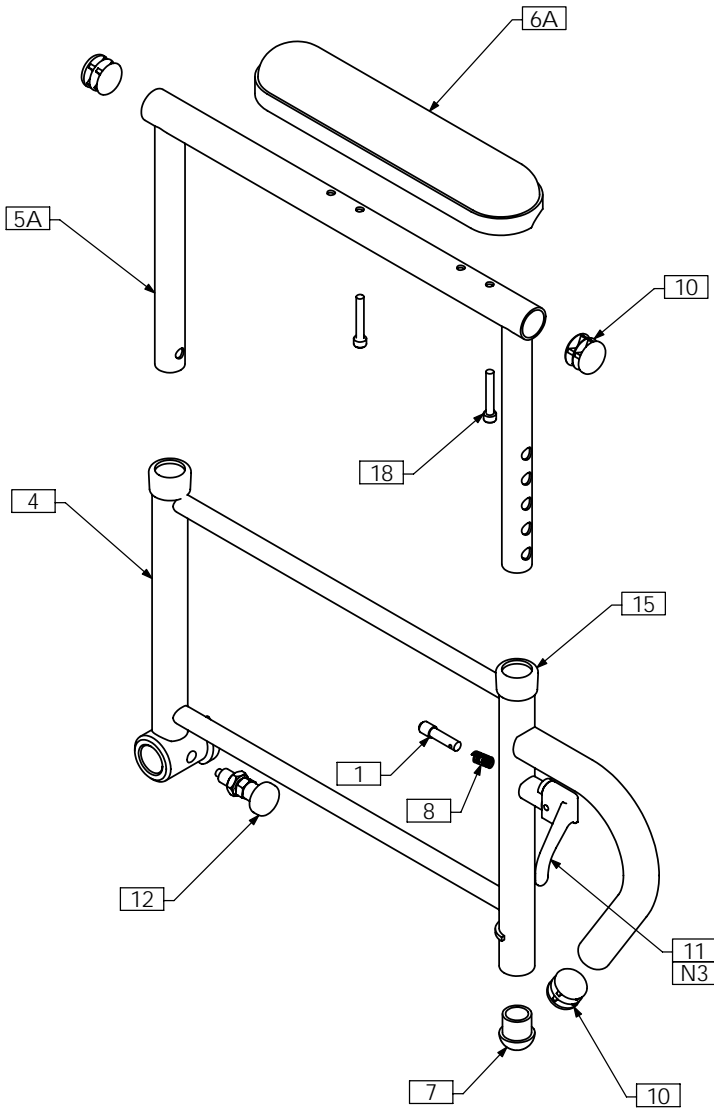
NOTES:

- 1. N/S = NOT SHOWN
- 2. OPTIONAL - AS PER ORDER

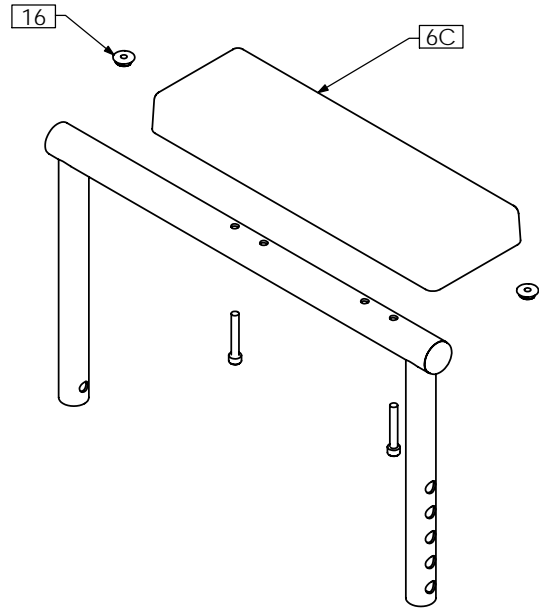
ITEM NO.	QTY.	PART NO.	DESCRIPTION	ITEM NO.	QTY.	PART NO.	DESCRIPTION
1A N/S	1	TRX0352	ARMREST EXTENSION	6	1	TRM0012	ROD CAP
1B N/S	1	TRX1549	ARMREST EXTENSION	7 N/S	1	TRM0100	FOAM GRIP 8"
2A	1	TRX1553	UPPER FRAME WLD	8	3	TRM0130	7/8" ROUND FLAT ROD CAP
2B N/S	1	TRX2715	MEDIUM UPPER FRAME WLD	9	1	TRM0214	PLUNGER
2C N/S	1	TRX1663	EXTENDED UPPER FRAME WLD	10	1	TRM0325	FLAT HAND PAD
3	1	TRX1555	LOWER FRAME WLD	11 N/S	1	TRM0390	LARGE ARM COVER WRAP
4	2	TRX1644	CLAMPING BAR	12	2	TRM0431	REDUCER CAP, 7/8" - 3/4"
5A	1	TRM0019	STANDARD ARM PAD - DESK LENGTH	13	2	TRH0209	#10-32 HEX FLANGE NUT
5B N/S	1	TRM0013	STANDARD ARM PAD - FULL LENGTH	14	8	TRH0336	SET SCREW, 0.25 x 0.25
5C	1	TRM0002	FLAT ARM PAD - DESK LENGTH	15	2	TRH0337	#10-32 x 1¼" SOCKET HEAD CAP SCREW GR8
5D N/S	1	TRM0003	FLAT ARM PAD - FULL LENGTH	16	1	TTM0047	SNAP BUTTON
5E	1	TRM0323	CONTOUR ARM TROUGH - LEFT				

TRC0412 - TILT ARM REST ASS'Y, RIGHT, LEVER LOCK

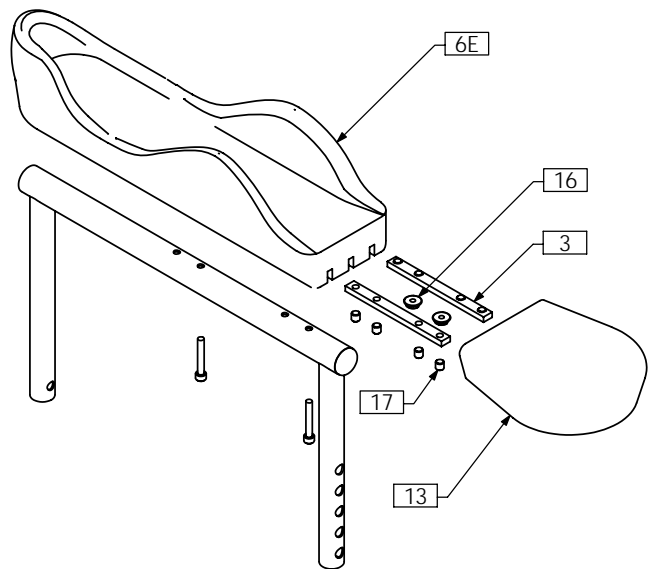
STANDARD ARM PAD



FLAT ARM PAD - NOTE 2



CONTOUR ARM TROUGH - NOTE 2

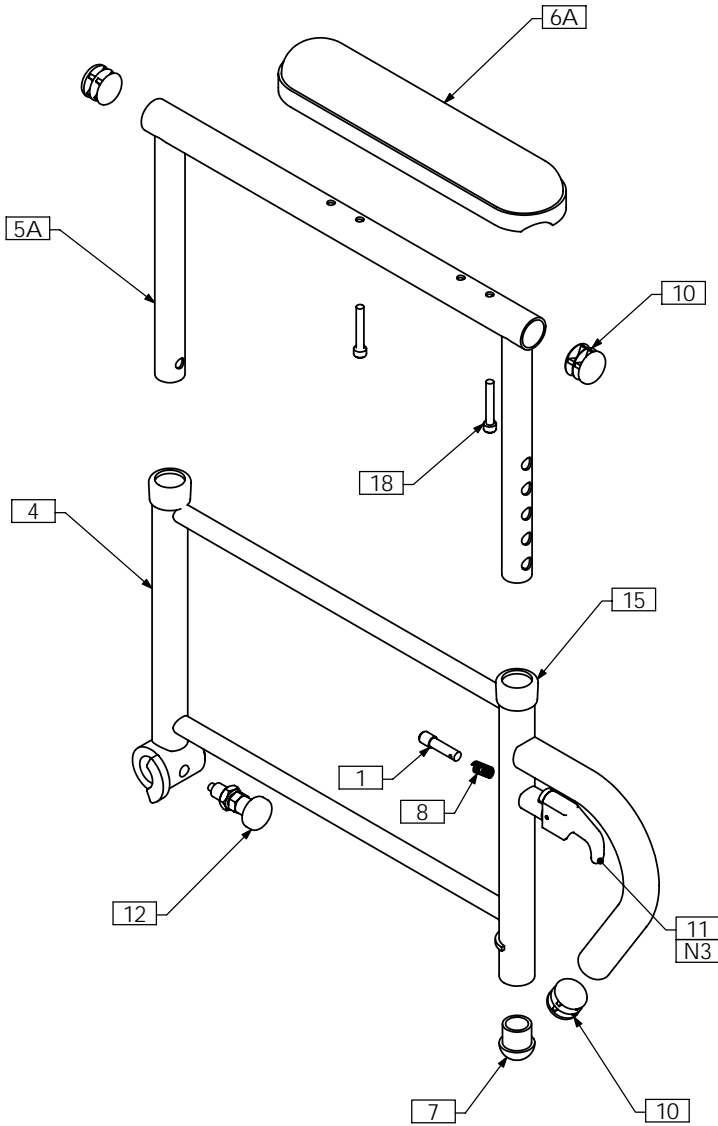


- NOTES:
 1. N/S = NOT SHOWN
 2. OPTIONAL - AS PER ORDER
 3. KIT INCLUDES - TRM0096, TRM0098, TRM0105. TRM0096 NOT USED

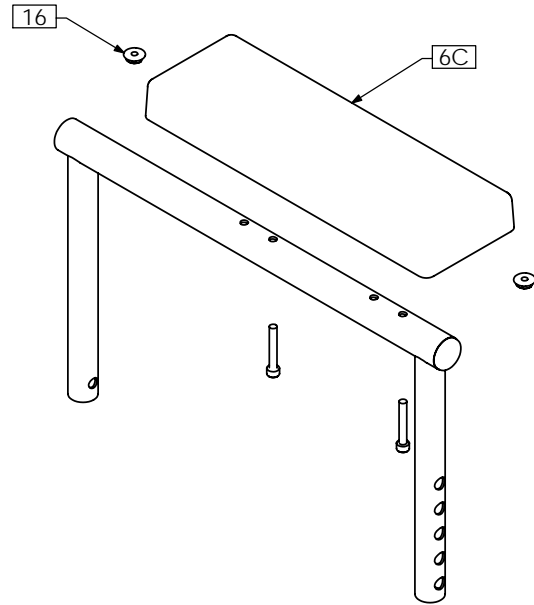
ITEM NO.	QTY.	PART NO.	DESCRIPTION	ITEM NO.	QTY.	PART NO.	DESCRIPTION
1	1	TRX0320	PLUNGER	7	1	TRM0012	ROD CAP
2A N/S	1	TRX0352	ARMREST EXTENSION	8	1	TRM0097	SPRING
2B N/S	1	TRX1549	ARMREST EXTENSION	9 N/S	1	TRM0100	FOAM GRIP 8"
3	2	TRX1644	CLAMPING BAR	10	3	TRM0130	7/8" ROUND FLAT ROD CAP
4	1	TRX2378	LOWER FRAME WLD	11	1	TRM0196	FLIP ARM LEVER KIT
5A	1	TRX2381	UPPER FRAME WLD	12	1	TRM0214	PLUNGER
5B N/S	1	TRX2822	MEDIUM UPPER FRAME WLD	13	1	TRM0325	FLAT HAND PAD
5C N/S	1	TRX2825	EXTENDED UPPER FRAME WLD	14 N/S	1	TRM0390	LARGE ARM COVER WRAP
6A	1	TRM0019	STANDARD ARM PAD - DESK LENGTH	15	2	TRM0431	REDUCER CAP, 7/8" - 3/4"
6B N/S	1	TRM0013	STANDARD ARM PAD - FULL LENGTH	16	2	TRH0209	#10-32 HEX FLANGE NUT
6C	1	TRM0002	FLAT ARM PAD - DESK LENGTH	17	8	TRH0336	SET SCREW, 0.25 x 0.25
6D N/S	1	TRM0003	FLAT ARM PAD - FULL LENGTH	18	2	TRH0337	#10-32 x 1 1/4" SOCKET HEAD CAP SCREW GR8
6E	1	TRM0324	CONTOUR ARM TROUGH - RIGHT				

TRC0413 - TILT ARM REST ASS'Y, LEFT, LEVER LOCK

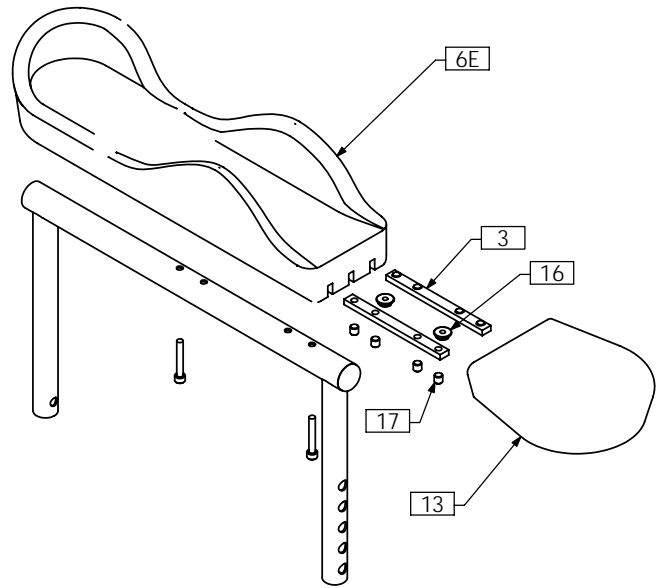
STANDARD ARM PAD



FLAT ARM PAD - NOTE 2



CONTOUR ARM TROUGH - NOTE 2



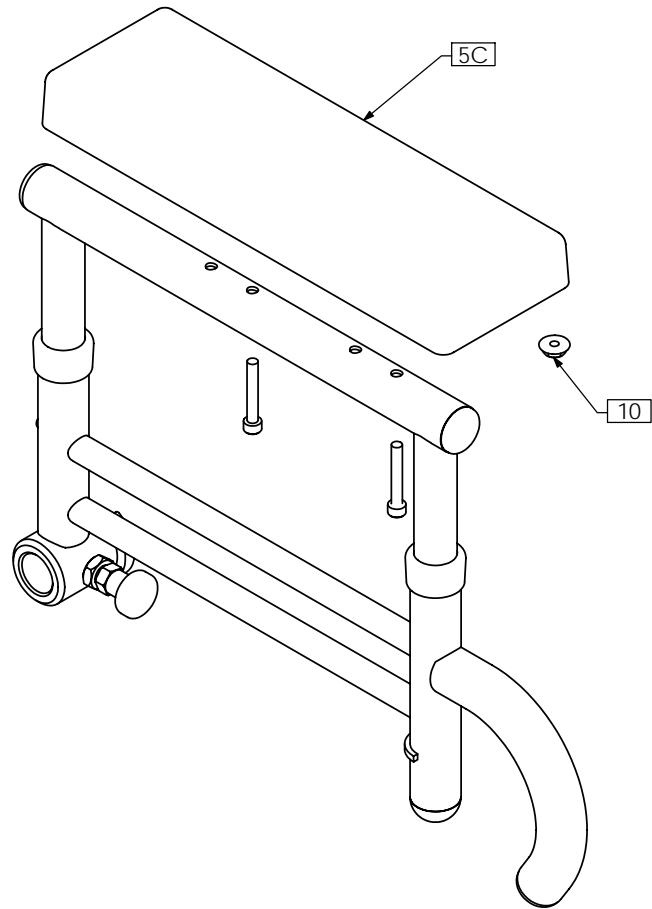
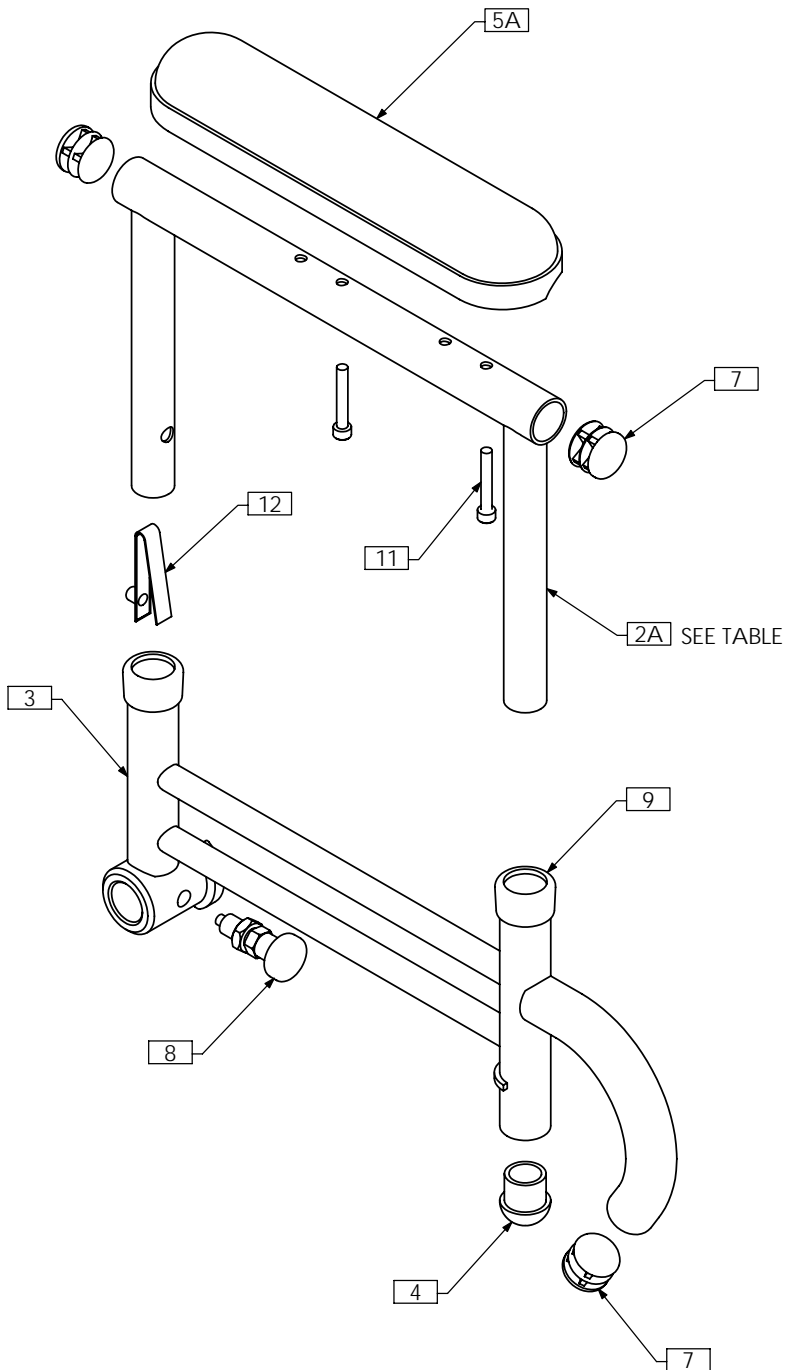
- NOTES:
 1. N/S = NOT SHOWN
 2. OPTIONAL - AS PER ORDER
 3. KIT INCLUDES - TRM0096, TRM0098, TRM0105. TRM0105 NOT USED

ITEM NO.	QTY.	PART NO.	DESCRIPTION	ITEM NO.	QTY.	PART NO.	DESCRIPTION
1	1	TRX0320	PLUNGER	7	1	TRM0012	ROD CAP
2A N/S	1	TRX0352	ARMREST EXTENSION	8	1	TRM0097	SPRING
2B N/S	1	TRX1549	ARMREST EXTENSION	9 N/S	1	TRM0100	FOAM GRIP 8"
3	2	TRX1644	CLAMPING BAR	10	3	TRM0130	7/8" ROUND FLAT ROD CAP
4	1	TRX2379	LOWER FRAME WLD	11	1	TRM0196	FLIP ARM LEVER KIT
5A	1	TRX2381	UPPER FRAME WLD	12	1	TRM0214	PLUNGER
5B N/S	1	TRX2822	MEDIUM UPPER FRAME WLD	13	1	TRM0325	FLAT HAND PAD
5C N/S	1	TRX2825	EXTENDED UPPER FRAME WLD	14 N/S	1	TRM0390	LARGE ARM COVER WRAP
6A	1	TRM0019	STANDARD ARM PAD - DESK LENGTH	15	2	TRM0431	REDUCER CAP, 7/8" - 3/4"
6B N/S	1	TRM0013	STANDARD ARM PAD - FULL LENGTH	16	2	TRH0209	#10-32 HEX FLANGE NUT
6C	1	TRM0002	FLAT ARM PAD - DESK LENGTH	17	8	TRH0336	SET SCREW, 0.25 x 0.25
6D N/S	1	TRM0003	FLAT ARM PAD - FULL LENGTH	18	2	TRH0337	#10-32 x 1/4" SOCKET HEAD CAP SCREW GR8
6E	1	TRM0323	CONTOUR ARM TROUGH - LEFT				

TRC0355 - TILT ARM REST ASS'Y, RIGHT, PEDIATRIC

STANDARD ARM PAD

FLAT ARM PAD - NOTE 2



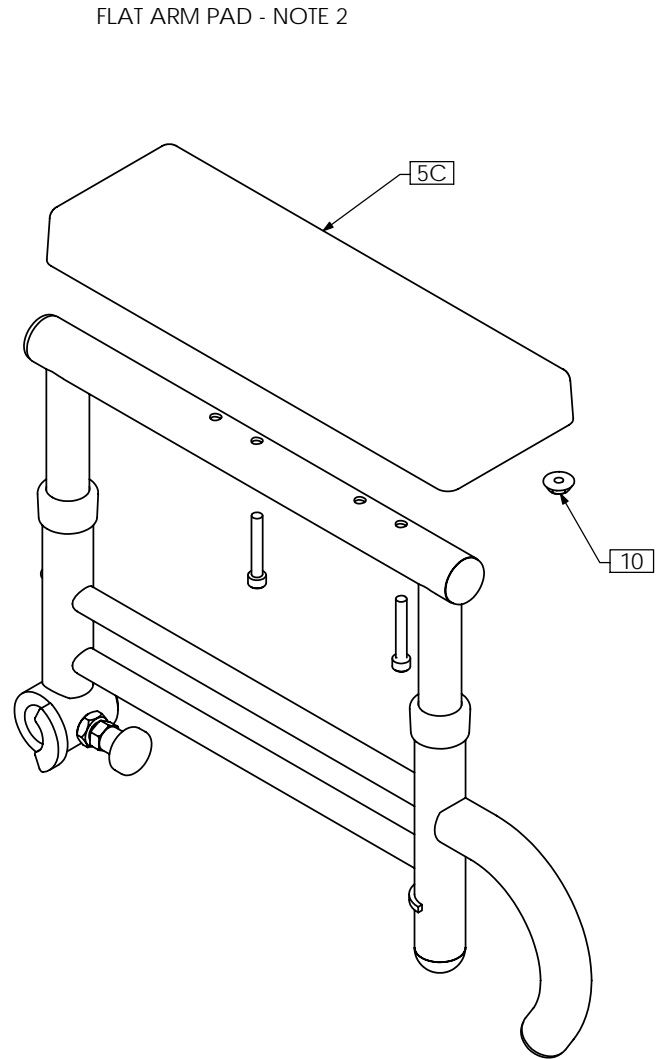
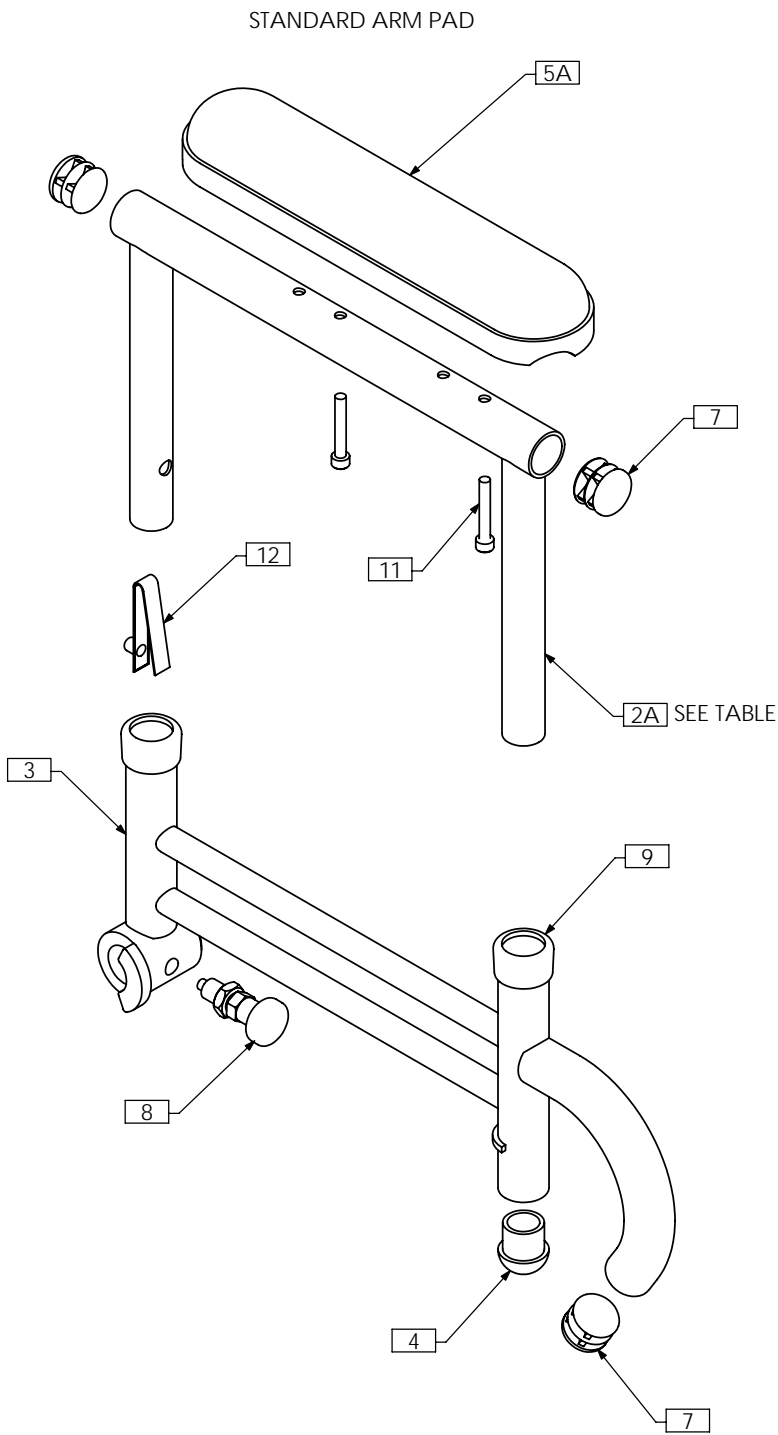
TRX1920 Upper Frame cutting table

Amount Cut-off	Height Range
0"	8¼", 9"
1½"	6¾", 7½", 8¼"
2½"	6", 6¾", 7½"

NOTES:
 1. N/S = NOT SHOWN
 2. OPTIONAL - AS PER ORDER

ITEM NO.	QTY.	PART NO.	DESCRIPTION	ITEM NO.	QTY.	PART NO.	DESCRIPTION
1 N/S	1	TRX0352	ARMREST EXTENSION	5D N/S	1	TRM0003	FLAT ARM PAD - FULL LENGTH
2A	1	TRX1920	UPPER FRAME WLD	6 N/S	1	TRM0100	FOAM GRIP 8"
2B N/S	1	TRX2597	EXTENDED UPPER FRAME WLD	7	3	TRM0130	7/8" ROUND FLAT ROD CAP
3	1	TRX1926	LOWER FRAME WLD, RIGHT	8	1	TRM0214	PLUNGER
4	1	TRM0012	ROD CAP	9	2	TRM0431	REDUCER CAP, 7/8" - 3/4"
5A	1	TRM0019	STANDARD ARM PAD - DESK LENGTH	10	2	TRH0209	#10-32 HEX FLANGE NUT
5B N/S	1	TRM0013	STANDARD ARM PAD - FULL LENGTH	11	2	TRH0337	#10-32 x 1¼" SOCKET HEAD CAP SCREW GR8
5C	1	TRM0002	FLAT ARM PAD - DESK LENGTH	12	1	TTM0047	SNAP BUTTON

TRC0356 - TILT ARM REST ASS'Y, LEFT, PEDIATRIC

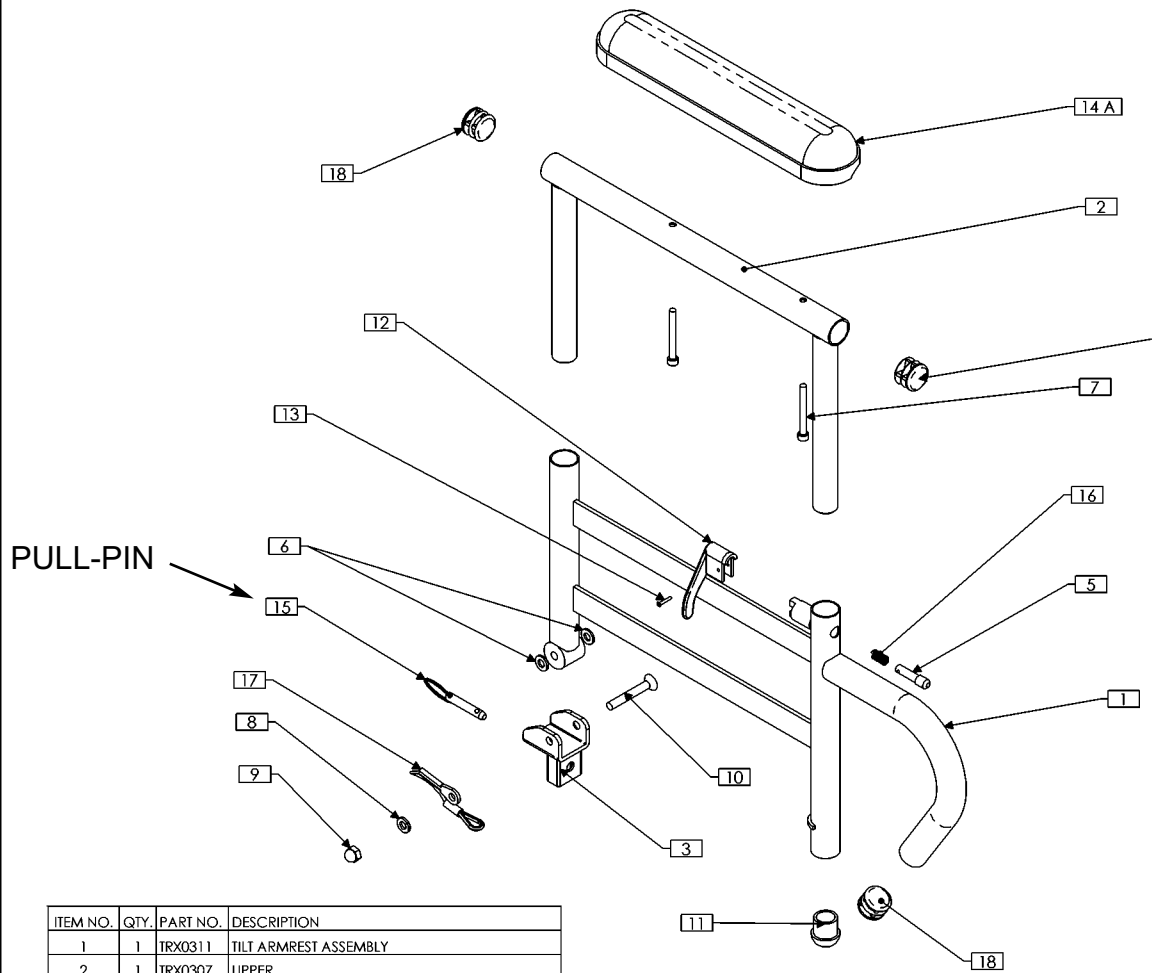


TRX1920 Upper Frame cutting table	
Amount Cut-off	Height Range
0"	8¼", 9"
1½"	6¾", 7½", 8¼"
2½"	6", 6¾", 7½"

NOTES:
 1. N/S = NOT SHOWN
 2. OPTIONAL - AS PER ORDER

ITEM NO.	QTY.	PART NO.	DESCRIPTION	ITEM NO.	QTY.	PART NO.	DESCRIPTION
1 N/S	1	TRX0352	ARMREST EXTENSION	5D N/S	1	TRM0003	FLAT ARM PAD - FULL LENGTH
2A	1	TRX1920	UPPER FRAME WLD	6 N/S	1	TRM0100	FOAM GRIP 8"
2B N/S	1	TRX2597	EXTENDED UPPER FRAME WLD	7	3	TRM0130	7/8" ROUND FLAT ROD CAP
3	1	TRX1925	LOWER FRAME WLD, LEFT	8	1	TRM0214	PLUNGER
4	1	TRM0012	ROD CAP	9	2	TRM0431	REDUCER CAP, 7/8" - 3/4"
5A	1	TRM0019	STANDARD ARM PAD - DESK LENGTH	10	2	TRH0209	#10-32 HEX FLANGE NUT
5B N/S	1	TRM0013	STANDARD ARM PAD - FULL LENGTH	11	2	TRH0337	#10-32 x 1¼" SOCKET HEAD CAP SCREW GR8
5C	1	TRM0002	FLAT ARM PAD - DESK LENGTH	12	1	TTM0047	SNAP BUTTON

TRC0102 - TILT ARM REST ASS'Y, RIGHT



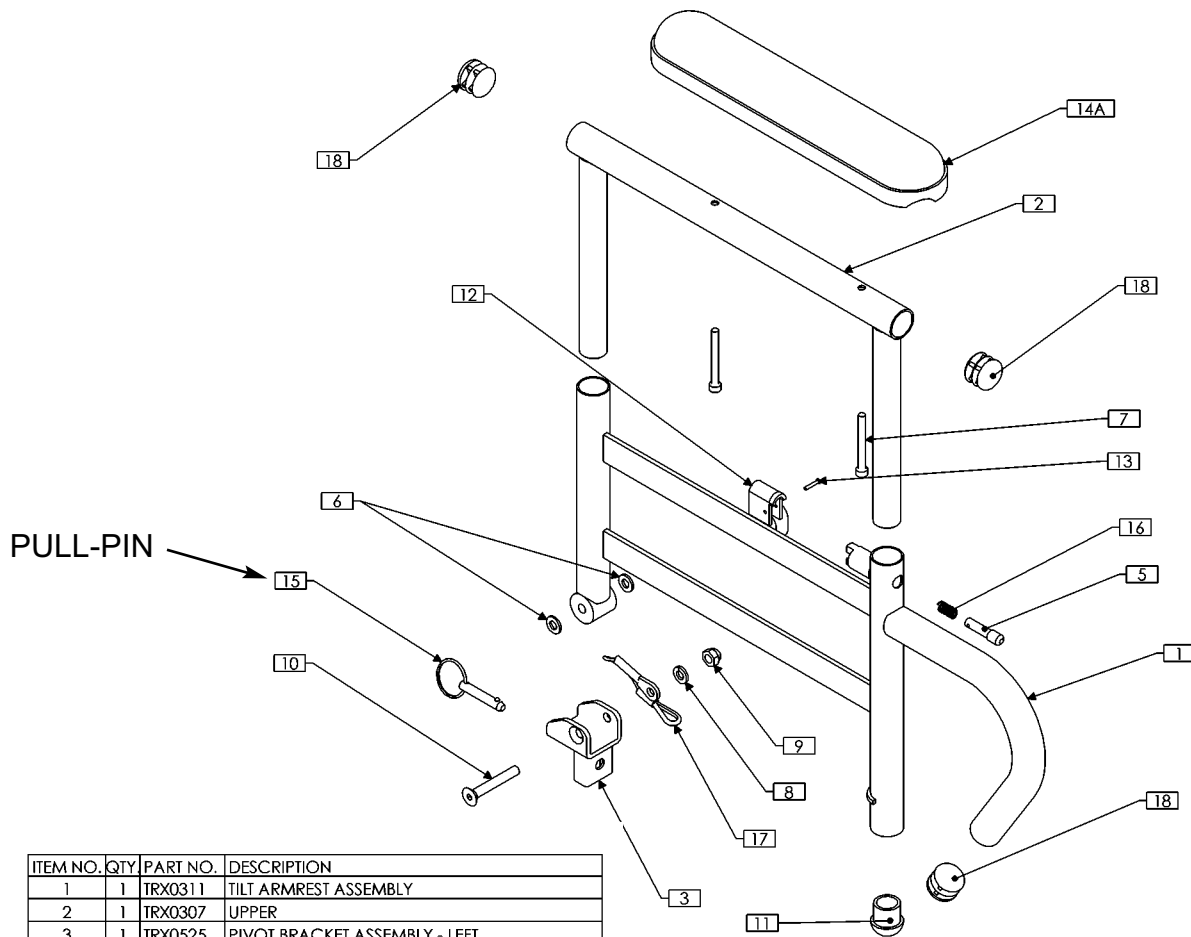
ITEM NO.	QTY.	PART NO.	DESCRIPTION
1	1	TRX0311	TILT ARMREST ASSEMBLY
2	1	TRX0307	UPPER
3	1	TRX0304	PIVOT BRACKET ASSEMBLY - RIGHT
4 N/S	1	TRX0352	ARM EXTENSION
5	1	TRX0320	PLUNGER
6	2	TRH0102	1/4" NYLON WASHER
7	2	TRH0342	#10 -32 x 1 1/2" SOCKET HEAD CAP SCREW GR8
8	1	TRH0115	1/2" LOCK WASHER
9	1	TRH0216	1/2" -20 ACORN NUT
10	1	TRH0371	1/4 -20 x 1 1/2" FLAT SOCKET CAP SCREW
11	1	TRM0012	ROD CAP
12	1	TRM0096	RIGHT ARM REST LEVER
13	1	TRM0098	ARM REST PIN
14 A	1	TRM0019	STANDARD ARM PAD - DESK LENGTH
14 B N/S	1	TRM0013	STANDARD ARM PAD - FULL LENGTH
14 C N/S	1	TRM0002	FLAT ARM PAD - DESK LENGTH
14 D N/S	1	TRM0003	FLAT ARM PAD - FULL LENGTH
15	1	TRM0103	TILT ARM REST SAFETY CABLE PULL PIN
16	1	TRM0097	SPRING
17	1	TRM0231	TILT ARM REST SAFETY CABLE
18	3	TRM0130	7/8" ROUND FLAT ROD CAP
19 N/S	1	TRM0100	FOAM GRIP 8"
20 N/S	1	TRM0178	ARM COVER WRAP

NOTES:
1. N/S = NOT SHOWN

OLD "PULL-PIN" STYLE



TRC0103 - TILT ARM REST ASS'Y, LEFT



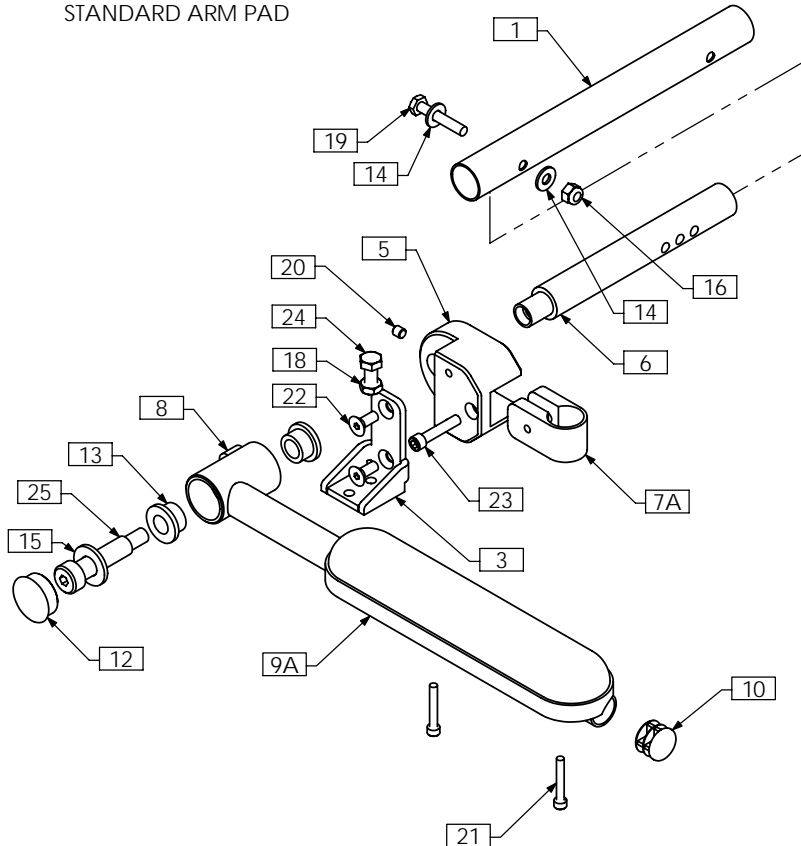
ITEM NO.	QTY	PART NO.	DESCRIPTION
1	1	TRX0311	TILT ARMREST ASSEMBLY
2	1	TRX0307	UPPER
3	1	TRX0525	PIVOT BRACKET ASSEMBLY - LEFT
4 N/S	1	TRX0352	ARM EXTENSION
5	1	TRX0320	PLUNGER
6	2	TRH0102	1/4" NYLON WASHER
7	2	TRH0342	#10 -32 x 1 3/4" SOCKET HEAD CAP SCREW GR8
8	1	TRH0115	1/2" LOCK WASHER
9	1	TRH0216	1/4" -20 ACORN NUT
10	1	TRH0371	1/2" -20 x 1 3/4" FLAT SOCKET CAP SCREW
11	1	TRM0012	ROD CAP
12	1	TRM0105	LEFT ARM REST LEVER
13	1	TRM0098	ARM REST PIN
14A	1	TRM0019	STANDARD ARM PAD - DESK LENGTH
14 B N/S	1	TRM0013	STANDARD ARM PAD - FULL LENGTH
14 C N/S	1	TRM0002	FLAT ARM PAD - DESK LENGTH
14 D N/S	1	TRM0003	FLAT ARM PAD - FULL LENGTH
15	1	TRM0103	TILT ARM REST SAFETY CABLE PULL PIN
16	1	TRM0097	SPRING
17	1	TRM0231	TILT ARM REST SAFETY CABLE
18	3	TRM0130	7/8" ROUND FLAT ROD CAP
19 N/S	1	TRM0100	FOAM GRIP 8"
20 N/S	1	TRM0178	ARM COVER WRAP

NOTES:
1. N/S = NOT SHOWN

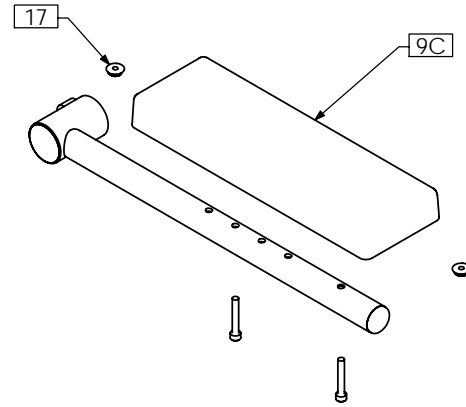
OLD "PULL-PIN"
STYLE

TRC0463 - CANTI-LEVER ARM REST ASS'Y, RIGHT, TILT-ONLY

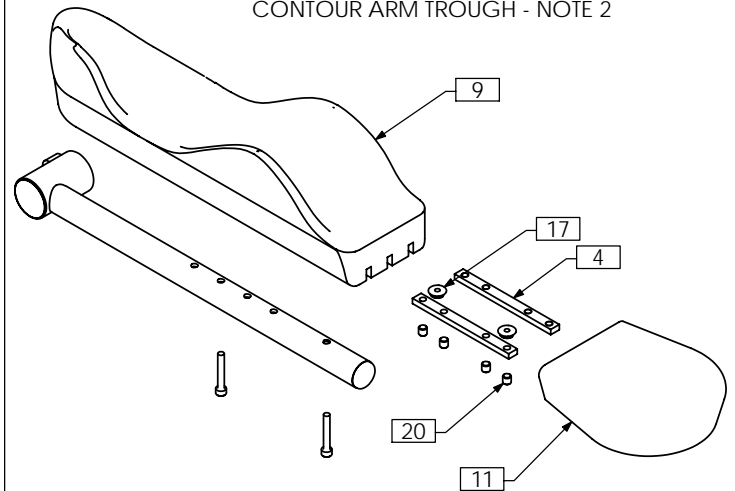
STANDARD ARM PAD



FLAT ARM PAD - NOTE 2



CONTOUR ARM TROUGH - NOTE 2

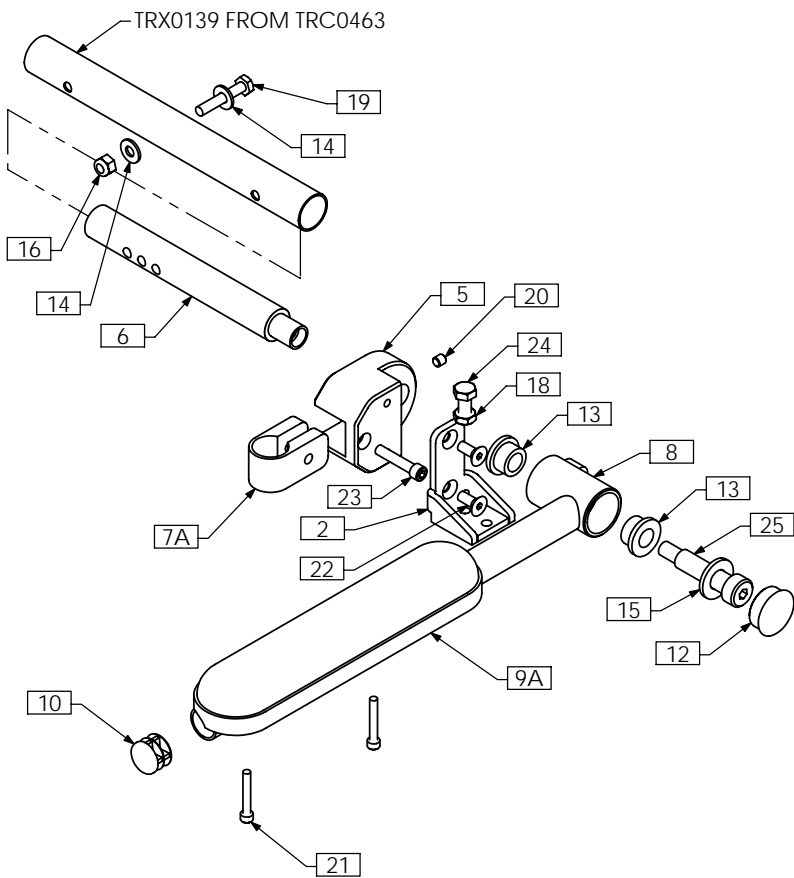


NOTES:
 1. N/S = NOT SHOWN
 2. OPTIONAL AS PER ORDER

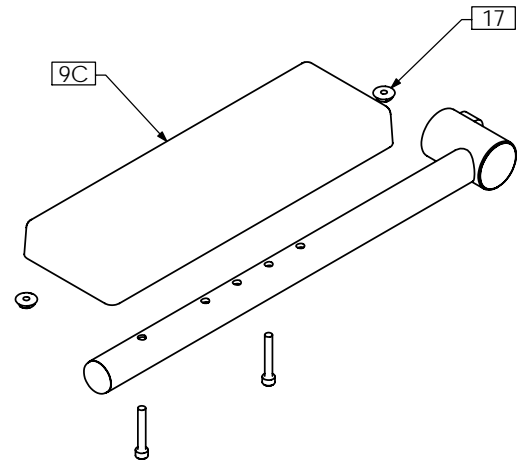
ITEM NO.	QTY.	PART NO.	DESCRIPTION	ITEM NO.	QTY.	PART NO.	DESCRIPTION
1	1	TRX0139	CROSS BAR	11	1	TRM0325	FLAT HAND PAD
2A N/S	1	TRX0352	ARMREST EXTENSION	12	1	TRM0493	1" ROUND DOMED ROD CAP
2B N/S	1	TRX1549	ARMREST EXTENSION	13	2	TRH0052	1/2"ID x 3/4"OD x 0.5" FLANGED BRONZE BUSHING
3	1	TRX1396	CANTILEVER ARMREST SUPPORT	14	2	TRH0101	1/4" FLAT WASHER
4	2	TRX1644	CLAMPING BAR	15	1	TRH0127	1/2" FLAT WASHER
5	1	TRX2600	CANTILEVER ARMREST REAR RECEIVER	16	1	TRH0201	1/4"-20 NYLOC NUT
6	1	TRX2601	CROSS SUPPORT BAR	17	2	TRH0209	#10-32 HEX FLANGE NUT
7A	1	TRX3220	CLAMPING BLOCK 0.875 TUBE	18	1	TRH0236	5/16-18 SHALLOW HEX JAM NUT
7B N/S	1	TRX2684	CLAMPING BLOCK	19	1	TRH0301	1/4"-20 x 1 1/2" HEX HEAD CAP SCREW
8	1	TRX2722	CANTILEVER ARMREST WLD	20	1(9)	TRH0336	SET SCREW, 0.25 x 0.25
9A	1	TRM0019	STANDARD ARM PAD - DESK LENGTH	21	2	TRH0337	#10-32 x 1 1/4" SOCKET HEAD CAP SCREW GR8
9B N/S	1	TRM0013	STANDARD ARM PAD - FULL LENGTH	22	2	TRH0349	1/4"-20 x 5/8" FLAT SOCKET CAP SCREW
9C	1	TRM0002	FLAT ARM PAD - DESK LENGTH	23	1	TRH0419	1/4"-20 x 1 1/4" SOCKET HEAD CAP SCREW GR8
9D N/S	1	TRM0003	FLAT ARM PAD - FULL LENGTH	24	1	TRH0493	5/16-18 x 3/4" HEX HEAD CAP SCREW
9E	1	TRM0324	CONTOUR ARM TROUGH - RIGHT	25	1	TRH0535	1/2 x 1 3/4" SOCKET HEAD SHOULDER BOLT
10	1	TRM0130	7/8" ROUND FLAT ROD CAP				

TRC0464 - CANTI-LEVER ARM REST ASS'Y, LEFT, TILT-ONLY

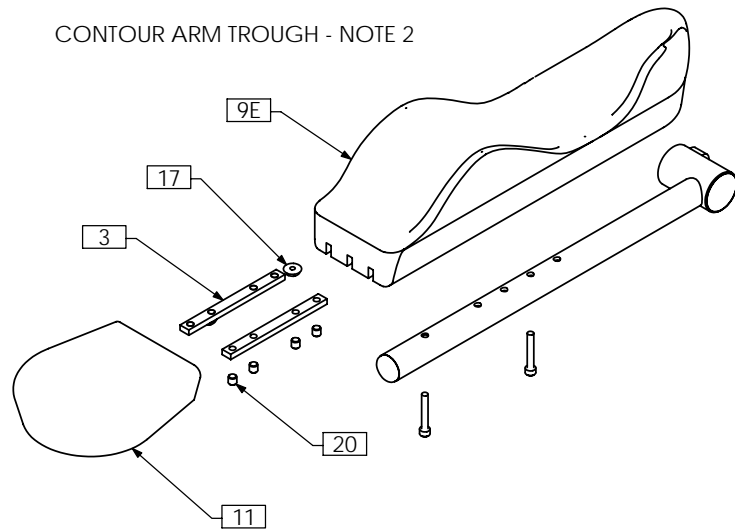
STANDARD ARM PAD



FLAT ARM PAD - NOTE 2



CONTOUR ARM TROUGH - NOTE 2

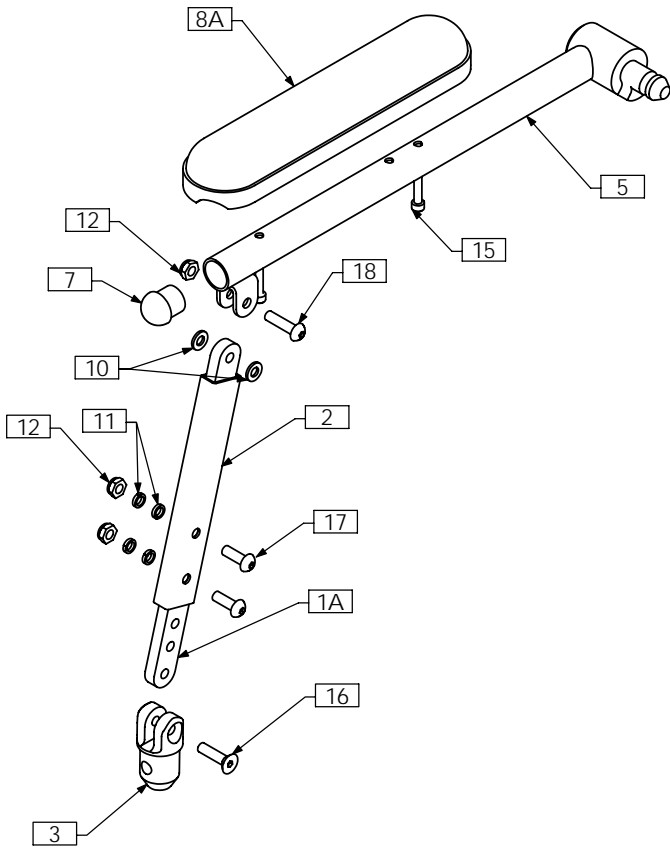


NOTES:
 1. N/S = NOT SHOWN
 2. OPTIONAL AS PER ORDER

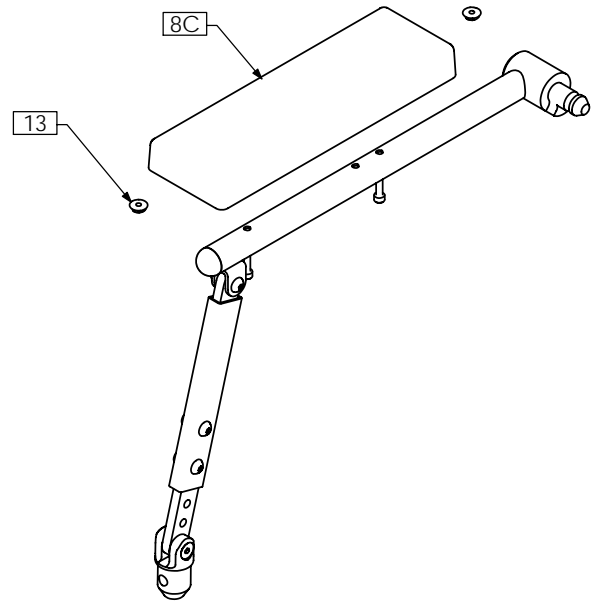
ITEM NO.	QTY.	PART NO.	DESCRIPTION	ITEM NO.	QTY.	PART NO.	DESCRIPTION
1A N/S	1	TRX0352	ARMREST EXTENSION	11	1	TRM0325	FLAT HAND PAD
1B N/S	1	TRX1549	ARMREST EXTENSION	12	1	TRM0493	1" ROUND DOMED ROD CAP
2	1	TRX1396	CANTILEVER ARMREST SUPPORT	13	2	TRH0052	1/2"ID x 3/4"OD x 0.5" FLANGED BRONZE BUSHING
3	2	TRX1644	CLAMPING BAR	14	2	TRH0101	1/4" FLAT WASHER
5	1	TRX2600	CANTILEVER ARMREST REAR RECEIVER	15	1	TRH0127	1/2" FLAT WASHER
6	1	TRX2601	CROSS SUPPORT BAR	16	1	TRH0201	1/4-20 NYLOC NUT
7A	1	TRX3220	CLAMPING BLOCK 0.875 TUBE	17	2	TRH0209	#10-32 HEX FLANGE NUT
7B N/S	1	TRX2684	CLAMPING BLOCK	18	1	TRH0236	5/16-18 SHALLOW HEX JAM NUT
8	1	TRX2722	CANTILEVER ARMREST WLD	19	1	TRH0301	1/4-20 x 1 1/2" HEX HEAD CAP SCREW
9A	1	TRM0019	STANDARD ARM PAD - DESK LENGTH	20	1(9)	TRH0336	SET SCREW, 0.25 x 0.25
9B N/S	1	TRM0013	STANDARD ARM PAD - FULL LENGTH	21	2	TRH0337	#10-32 x 1 1/4" SOCKET HEAD CAP SCREW GR8
9C	1	TRM0002	FLAT ARM PAD - DESK LENGTH	22	2	TRH0349	1/4-20 x 5/8" FLAT SOCKET CAP SCREW
9D N/S	1	TRM0003	FLAT ARM PAD - FULL LENGTH	23	1	TRH0419	1/4-20 x 1 1/4" SOCKET HEAD CAP SCREW GR8
9E	1	TRM0323	CONTOUR ARM TROUGH - LEFT	24	1	TRH0493	5/16-18 x 3/4" HEX HEAD CAP SCREW
10	1	TRM0130	7/8" ROUND FLAT ROD CAP	25	1	TRH0535	1/2 x 1 3/4" SOCKET HEAD SHOULDER BOLT

TRC0460 - RECLINE ARM REST ASS'Y, RIGHT

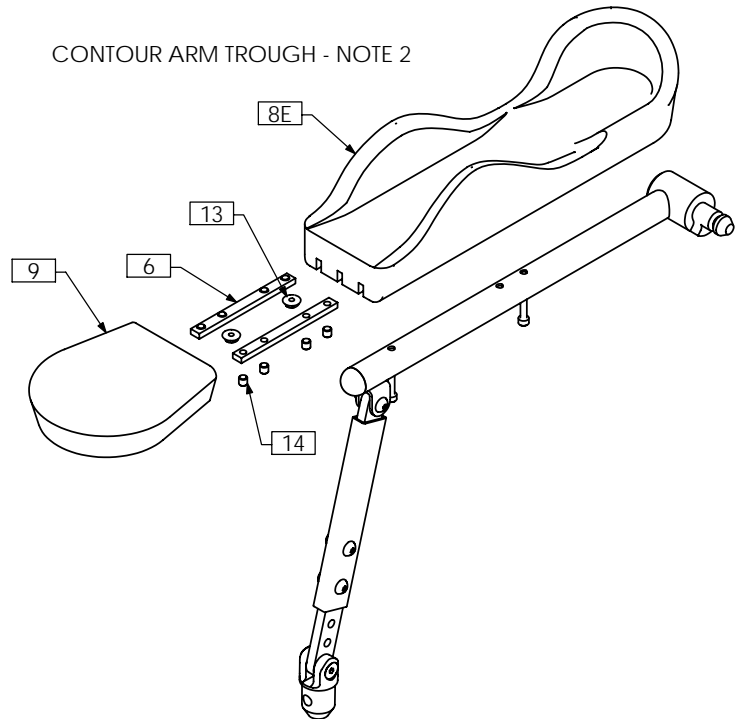
STANDARD ARM PAD



FLAT ARM PAD - NOTE 2



CONTOUR ARM TROUGH - NOTE 2

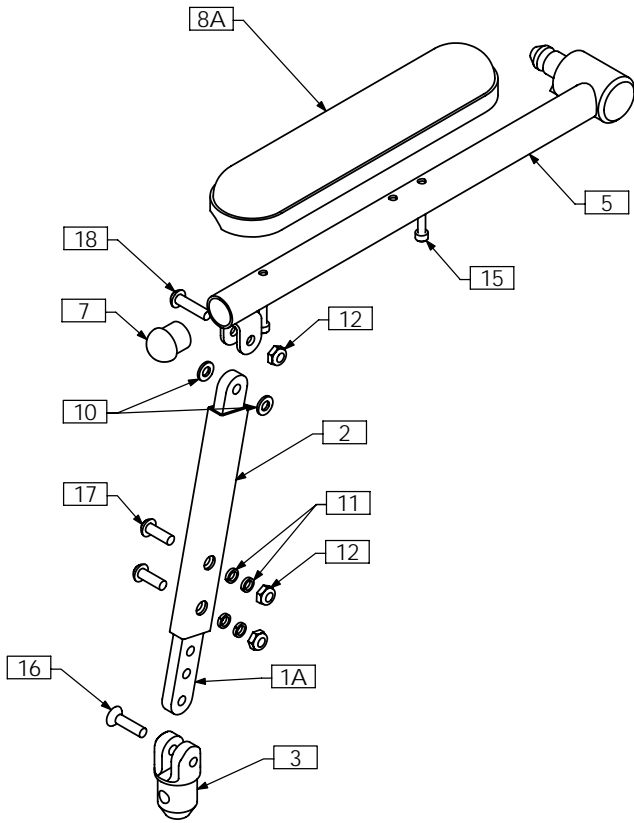


NOTES:
 1. N/S = NOT SHOWN
 2. OPTIONAL - AS PER ORDER

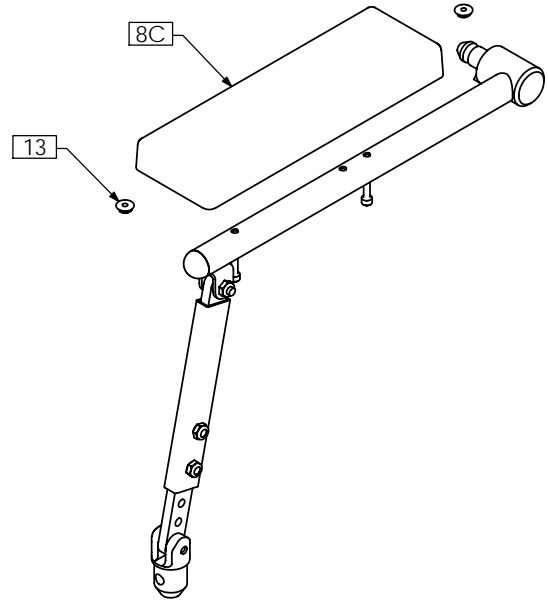
ITEM NO.	QTY.	PART NO.	DESCRIPTION	ITEM NO.	QTY.	PART NO.	DESCRIPTION
1A	1	TRX0335	PIVOT ARM BAR	8D N/S	1	TRM0003	FLAT ARM PAD - FULL LENGTH
1B N/S	1	TRX2021	EXTENDED PIVOT ARM BAR	8E	1	TRM0324	CONTOUR ARM TROUGH - RIGHT
2	1	TRX0338	ARMREST PIVOT WLD	9	1	TRM0325	FLAT HAND PAD
3	1	TRX0339	LOWER PLUG	10	2	TRH0102	¼" NYLON WASHER
4A N/S	1	TRX0352	ARMREST EXTENSION	11	4	TRH0113	¼" HI COLLAR LOCK WASHER
4B N/S	1	TRX1549	ARMREST EXTENSION	12	3	TRH0202	¼-20 SHALLOW NYLOC NUT
5	1	TRX1390	RIGHT ARMREST WLD	13	2	TRH0209	#10-32 HEX FLANGE NUT
6	2	TRX1644	CLAMPING BAR	14	8	TRH0336	SET SCREW, 0.25 x 0.25
7	1	TRM0012	ROD CAP	15	2	TRH0337	#10-32 x 1¼" SOCKET HEAD CAP SCREW GR8
8A	1	TRM0019	STANDARD ARM PAD - DESK LENGTH	16	1	TRH0394	¼-20 x 1" FLAT SOCKET CAP SCREW
8B N/S	1	TRM0013	STANDARD ARM PAD - FULL LENGTH	17	2	TRH0445	¼-20 x ¾" BUTTON SOCKET CAP SCREW
8C	1	TRM0002	FLAT ARM PAD - DESK LENGTH	18	1	TRH0450	¼-20 x 1" BUTTON SOCKET CAP SCREW

TRC0461 - RECLINE ARM REST ASS'Y, LEFT

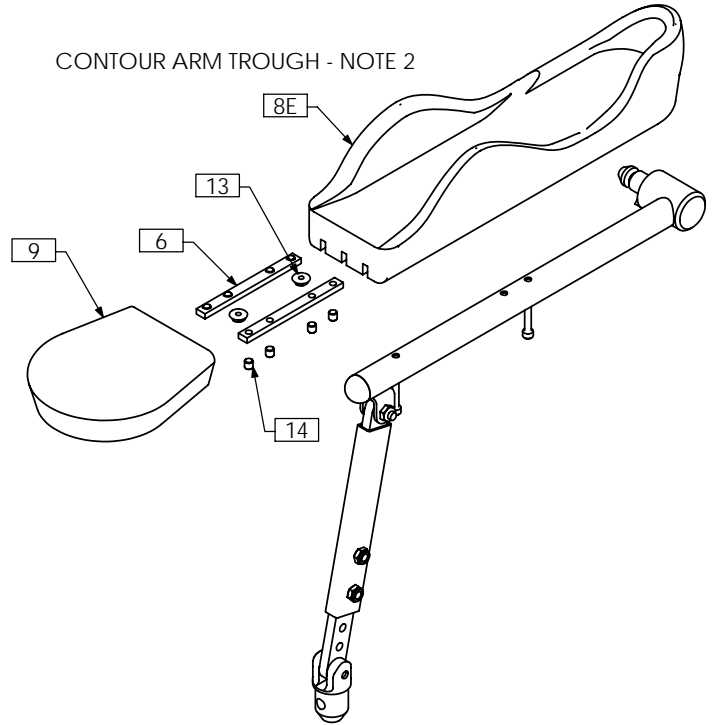
STANDARD ARM PAD



FLAT ARM PAD - NOTE 2



CONTOUR ARM TROUGH - NOTE 2

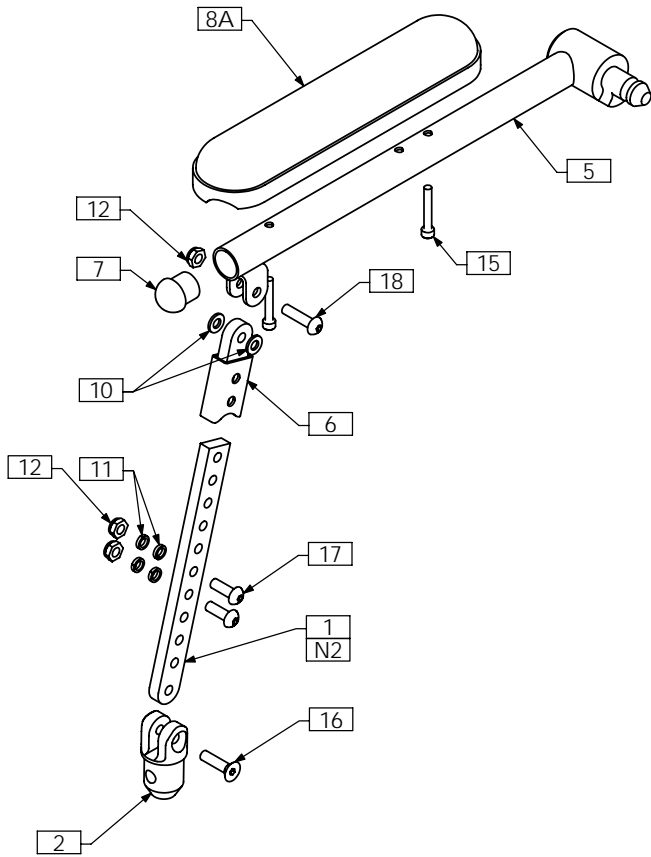


NOTES:
 1. N/S = NOT SHOWN
 2. OPTIONAL - AS PER ORDER

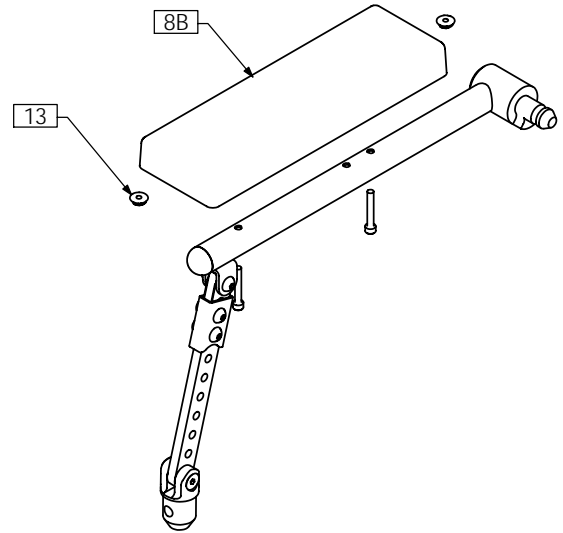
ITEM NO.	QTY.	PART NO.	DESCRIPTION	ITEM NO.	QTY.	PART NO.	DESCRIPTION
1A	1	TRX0335	PIVOT ARM BAR	8D N/S	1	TRM0003	FLAT ARM PAD - FULL LENGTH
1B N/S	1	TRX2021	EXTENDED PIVOT ARM BAR	8E	1	TRM0323	CONTOUR ARM TROUGH - LEFT
2	1	TRX0338	ARMREST PIVOT WLD	9	1	TRM0325	FLAT HAND PAD
3	1	TRX0339	LOWER PLUG	10	2	TRH0102	¼" NYLON WASHER
4A N/S	1	TRX0352	ARMREST EXTENSION	11	4	TRH0113	¼" HI COLLAR LOCK WASHER
4B N/S	1	TRX1549	ARMREST EXTENSION	12	3	TRH0202	¼-20 SHALLOW NYLOC NUT
5	1	TRX1389	LEFT ARM WLD	13	2	TRH0209	#10-32 HEX FLANGE NUT
6	2	TRX1644	CLAMPING BAR	14	8	TRH0336	SET SCREW, 0.25 x 0.25
7	1	TRM0012	ROD CAP	15	2	TRH0337	#10-32 x 1¼" SOCKET HEAD CAP SCREW GR8
8A	1	TRM0019	STANDARD ARM PAD - DESK LENGTH	16	1	TRH0394	¼-20 x 1" FLAT SOCKET CAP SCREW
8B N/S	1	TRM0013	STANDARD ARM PAD - FULL LENGTH	17	2	TRH0445	¼-20 x ¾" BUTTON SOCKET CAP SCREW
8C	1	TRM0002	FLAT ARM PAD - DESK LENGTH	18	1	TRH0450	¼-20 x 1" BUTTON SOCKET CAP SCREW

TRC0450 - RECLINE ARM REST ASS'Y, RIGHT, PEDIATRIC

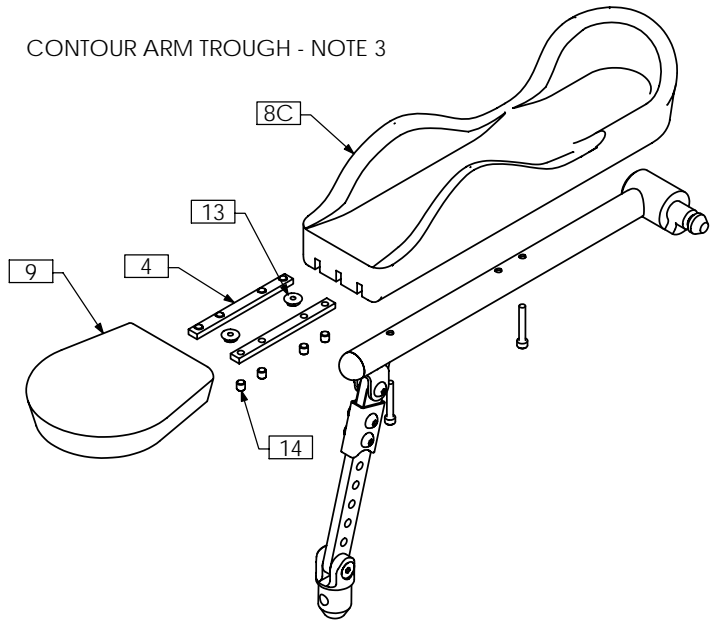
STANDARD ARM PAD



FLAT ARM PAD - NOTE 3



CONTOUR ARM TROUGH - NOTE 3



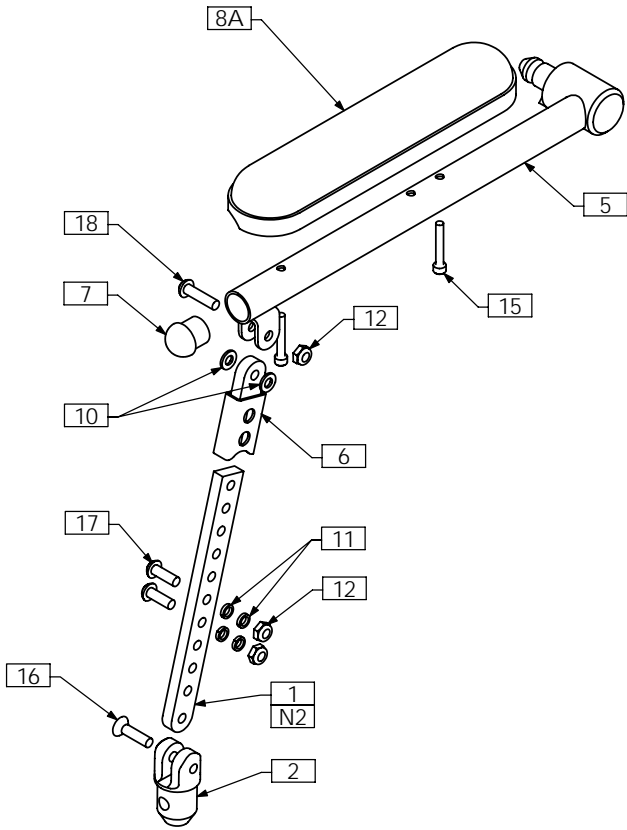
NOTES:

- 1. N/S = NOT SHOWN
- 2. TO BE CUT SHORTER AS REQUIRED
- 3. OPTIONAL - AS PER ORDER

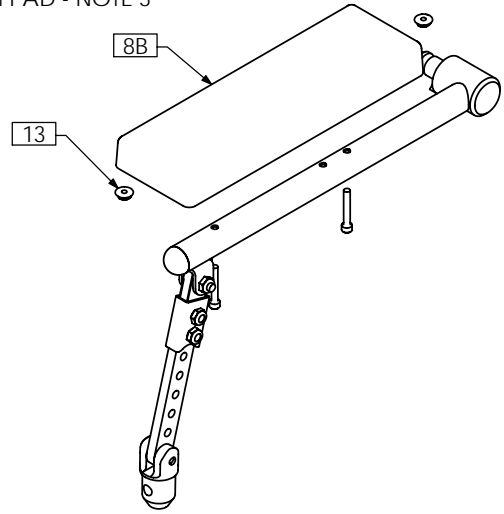
ITEM NO.	QTY.	PART NO.	DESCRIPTION	ITEM NO.	QTY.	PART NO.	DESCRIPTION
1	1	TRX0335	PIVOT ARM BAR	9	1	TRM0325	FLAT HAND PAD
2	1	TRX0339	LOWER PLUG	10	2	TRH0102	¼" NYLON WASHER
3A N/S	1	TRX0352	ARMREST EXTENSION	11	4	TRH0113	¼" HI COLLAR LOCK WASHER
3B N/S	1	TRX1549	ARMREST EXTENSION	12	3	TRH0202	¼-20 SHALLOW NYLOC NUT
4	2	TRX1644	CLAMPING BAR	13	2	TRH0209	#10-32 HEX FLANGE NUT
5	1	TRX2462	RIGHT PEDIATRIC ARMREST WLD	14	8	TRH0336	SET SCREW, 0.25 x 0.25
6	1	TRX2465	PEDIATRIC ARMREST PIVOT WLD	15	2	TRH0337	#10-32 x 1¼" SOCKET HEAD CAP SCREW GR8
7	1	TRM0012	ROD CAP	16	1	TRH0394	¼-20 x 1" FLAT SOCKET CAP SCREW
8A	1	TRM0019	STANDARD ARM PAD - DESK LENGTH	17	2	TRH0445	¼-20 x ¾" BUTTON SOCKET CAP SCREW
8B	1	TRM0002	FLAT ARM PAD - DESK LENGTH	18	1	TRH0450	¼-20 x 1" BUTTON SOCKET CAP SCREW
8C	1	TRM0324	CONTOUR ARM TROUGH - RIGHT				

TRC0451 - RECLINE ARM REST ASS'Y, LEFT, PEDIATRIC

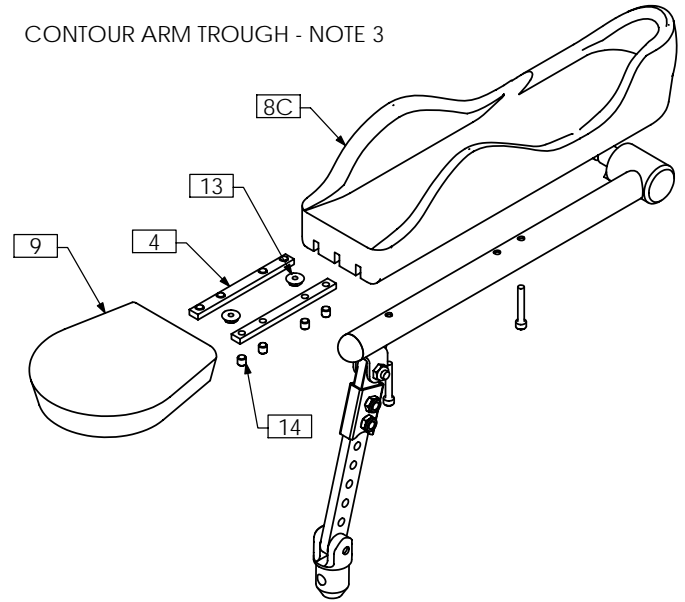
STANDARD ARM PAD



FLAT ARM PAD - NOTE 3



CONTOUR ARM TROUGH - NOTE 3



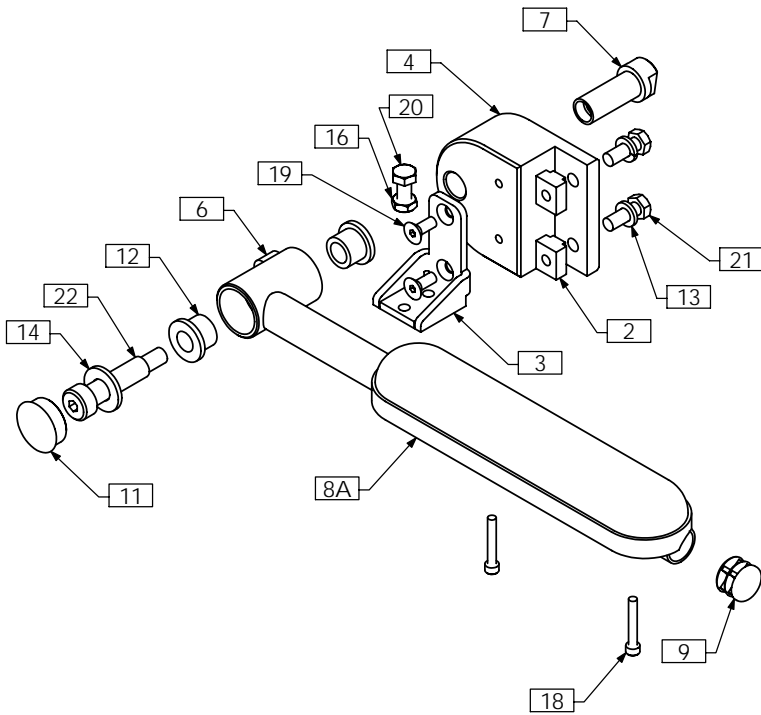
NOTES:

- 1. N/S = NOT SHOWN
- 2. TO BE CUT SHORTER AS REQUIRED
- 3. OPTIONAL - AS PER ORDER

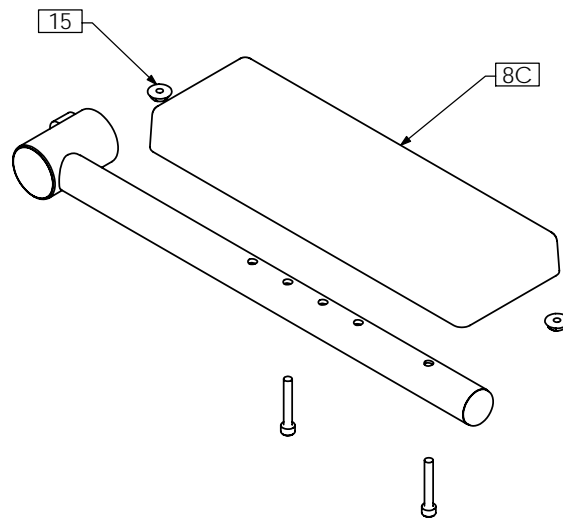
ITEM NO.	QTY.	PART NO.	DESCRIPTION	ITEM NO.	QTY.	PART NO.	DESCRIPTION
1	1	TRX0335	PIVOT ARM BAR	9	1	TRM0325	FLAT HAND PAD
2	1	TRX0339	LOWER ARM PLUG	10	2	TRH0102	1/4" NYLON WASHER
3A N/S	1	TRX0352	ARMREST EXTENSION	11	4	TRH0113	1/4" HI COLLAR LOCK WASHER
3B N/S	1	TRX1549	ARMREST EXTENSION	12	3	TRH0202	1/4-20 SHALLOW NYLOC NUT
4	2	TRX1644	CLAMPING BAR	13	2	TRH0209	#10-32 HEX FLANGE NUT
5	1	TRX2463	LEFT PEDIATRIC ARMREST WLD	14	8	TRH0336	SET SCREW, 0.25 x 0.25
6	1	TRX2465	PEDIATRIC ARMREST PIVOT WLD	15	2	TRH0337	#10-32 x 1 1/4" SOCKET HEAD CAP SCREW GR8
7	1	TRM0012	ROD CAP	16	1	TRH0394	1/4-20 x 1" FLAT SOCKET CAP SCREW
8A	1	TRM0019	STANDARD ARM PAD - DESK LENGTH	17	2	TRH0445	1/4-20 x 3/4" BUTTON SOCKET CAP SCREW
8B	1	TRM0002	FLAT ARM PAD - DESK LENGTH	18	1	TRH0450	1/4-20 x 1" BUTTON SOCKET CAP SCREW
8C	1	TRM0323	CONTOUR ARM TROUGH - LEFT				

TRC0465 - CANTI-LEVER ARM REST ASS'Y, RIGHT, RECLINE

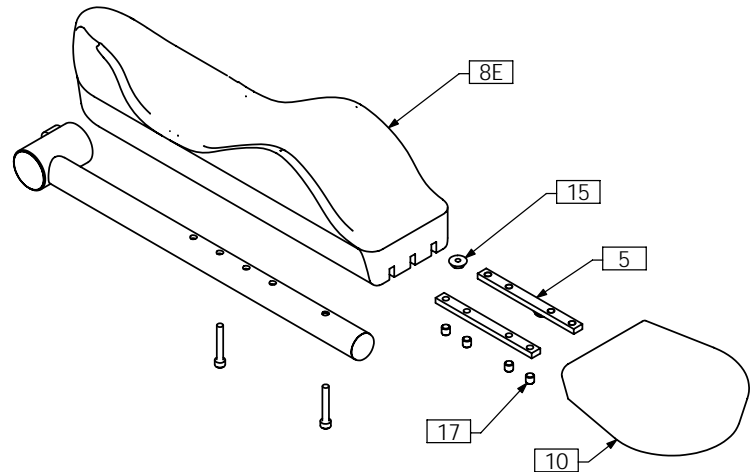
STANDARD ARM PAD



FLAT ARM PAD - NOTE 2



CONTOUR ARM TROUGH - NOTE 2

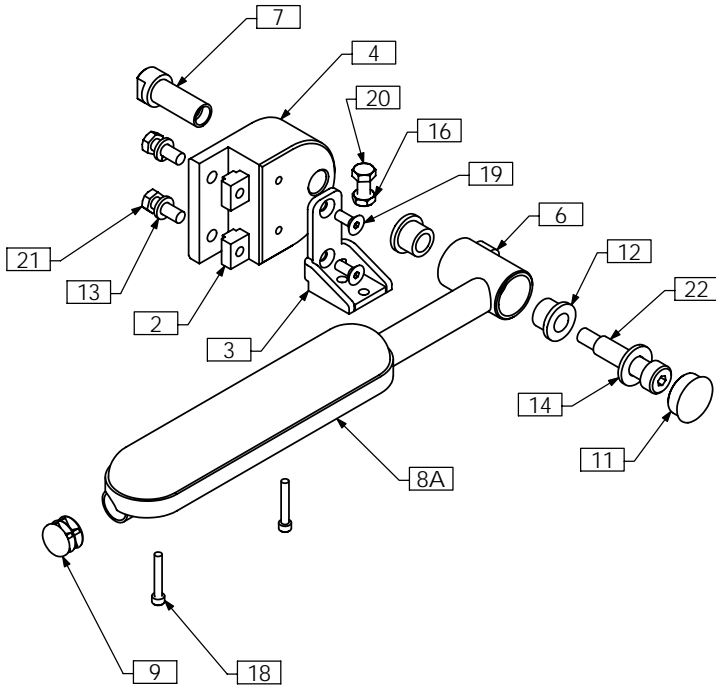


NOTES:
 1. N/S = NOT SHOWN
 2. OPTIONAL AS PER ORDER

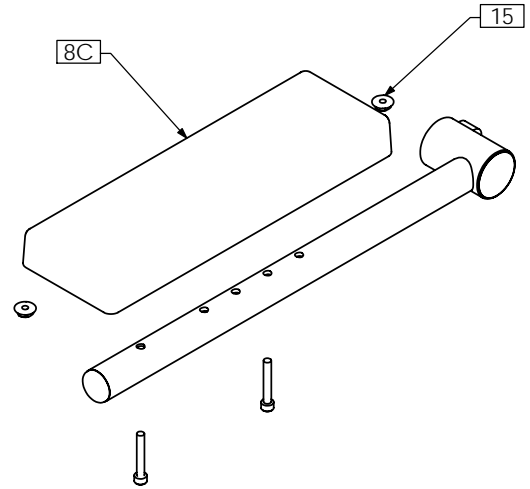
ITEM NO.	QTY.	PART NO.	DESCRIPTION	ITEM NO.	QTY.	PART NO.	DESCRIPTION
1A N/S	1	TRX0352	ARMREST EXTENSION	10	1	TRM0325	FLAT HAND PAD
1B N/S	1	TRX1549	ARMREST EXTENSION	11	1	TRM0493	1" ROUND DOMED ROD CAP
2	2	TRX0571	T-NUT, 5/16-18	12	2	TRH0032	1/2"ID x 3/4"OD x 5/8" FLANGED BRONZE BUSHING
3	1	TRX1396	CANTILEVER ARMREST SUPPORT	13	2	TRH0108	5/16" LOCK WASHER
4	1	TRX1457	CANTILEVER ARMREST REAR RECEIVER	14	1	TRH0127	1/2" FLAT WASHER
5	2	TRX1644	CLAMPING BAR	15	2	TRH0209	#10-32 HEX FLANGE NUT
6	1	TRX2722	CANTILEVER ARMREST WLD	16	1	TRH0236	5/16-18 SHALLOW HEX JAM NUT
7	1	TRX2745	ADAPTER SLEEVE	17	8	TRH0336	SET SCREW, 0.25 x 0.25
8A	1	TRM0019	STANDARD ARM PAD - DESK LENGTH	18	2	TRH0337	#10-32 x 1 1/4" SOCKET HEAD CAP SCREW GR8
8B N/S	1	TRM0013	STANDARD ARM PAD - FULL LENGTH	19	2	TRH0349	1/4-20 x 5/8" FLAT SOCKET CAP SCREW
8C	1	TRM0002	FLAT ARM PAD - DESK LENGTH	20	1	TRH0493	5/16-18 x 3/4" HEX HEAD CAP SCREW
8D N/S	1	TRM0003	FLAT ARM PAD - FULL LENGTH	21	2	TRH0507	5/16-18 x 7/8" HEX HEAD CAP SCREW
8E	1	TRM0324	CONTOUR ARM TROUGH - RIGHT	22	1	TRH0535	1/2 x 1 3/4" SOCKET HEAD SHOULDER BOLT
9	1	TRM0130	7/8" ROUND FLAT ROD CAP				

TRC0466 - CANTI-LEVER ARM REST ASS'Y, LEFT, RECLINE

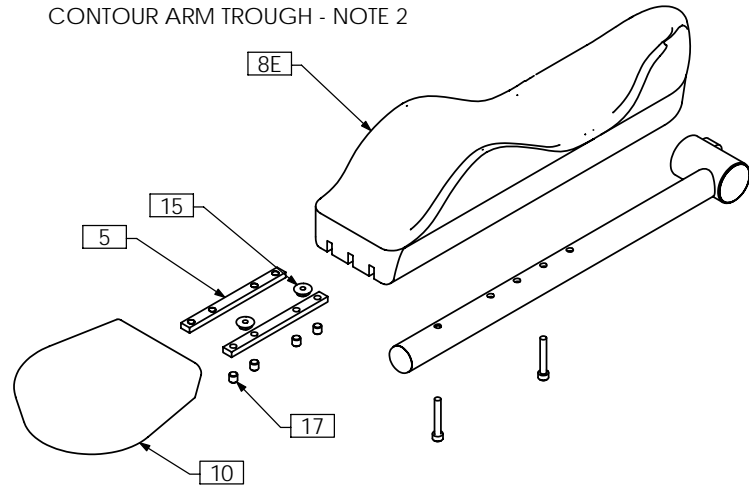
STANDARD ARM PAD



FLAT ARM PAD - NOTE 2



CONTOUR ARM TROUGH - NOTE 2

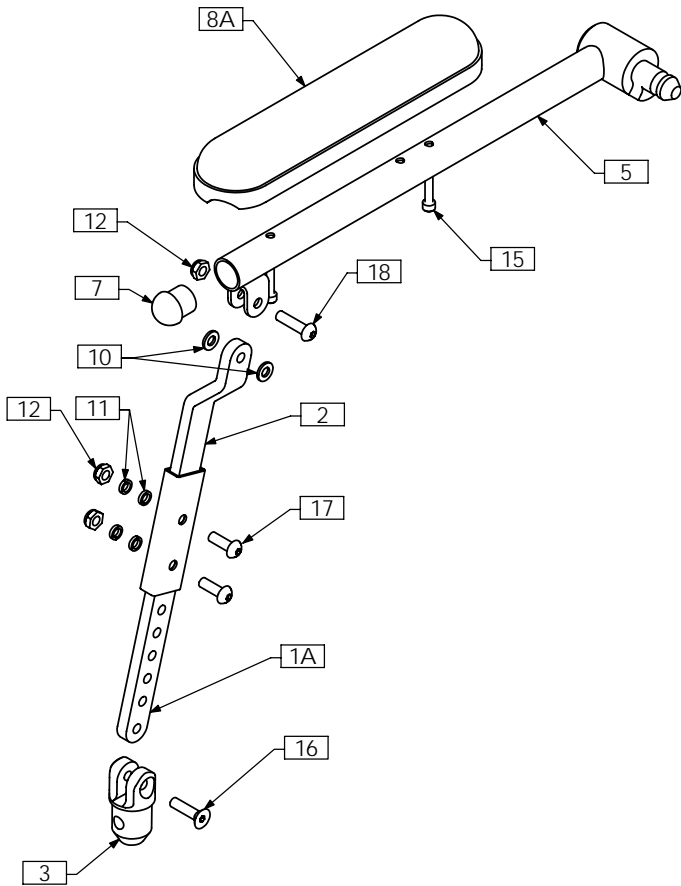


NOTES:
1. N/S = NOT SHOWN
2. OPTIONAL AS PER ORDER

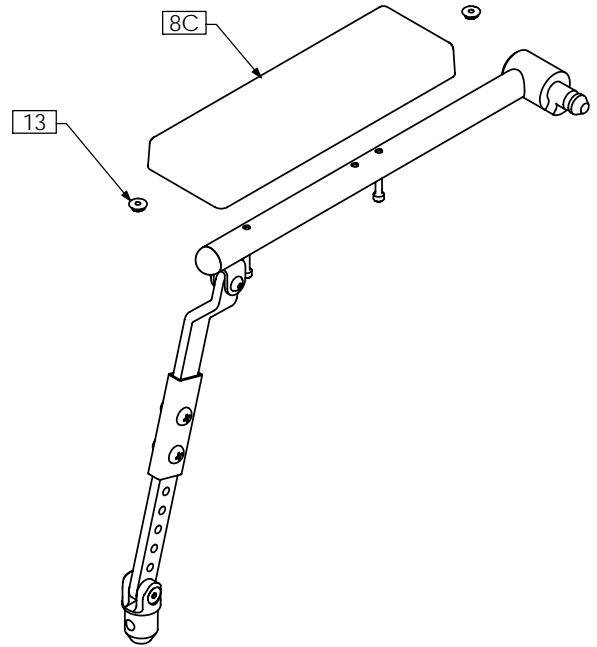
ITEM NO.	QTY.	PART NO.	DESCRIPTION	ITEM NO.	QTY.	PART NO.	DESCRIPTION
1A	N/S	TRX0352	ARMREST EXTENSION	10	1	TRM0325	FLAT HAND PAD
1B	N/S	TRX1549	ARMREST EXTENSION	11	1	TRM0493	1" ROUND DOMED ROD CAP
2	2	TRX0571	T-NUT, 5/16-18	12	2	TRH0032	1/2"ID x 3/4"OD x 5/8" FLANGED BRONZE BUSHING
3	1	TRX1396	CANTILEVER ARMREST SUPPORT	13	2	TRH0108	5/16" LOCK WASHER
4	1	TRX1457	CANTILEVER ARMREST REAR RECEIVER	14	1	TRH0127	1/2" FLAT WASHER
5	2	TRX1644	CLAMPING BAR	15	2	TRH0209	#10-32 HEX FLANGE NUT
6	1	TRX2722	CANTILEVER ARMREST WLD	16	1	TRH0236	5/16-18 SHALLOW HEX JAM NUT
7	1	TRX2745	ADAPTER SLEEVE	17	8	TRH0336	SET SCREW, 0.25 x 0.25
8A	1	TRM0019	STANDARD ARM PAD - DESK LENGTH	18	2	TRH0337	#10-32 x 1 1/4" SOCKET HEAD CAP SCREW GR8
8B	N/S	TRM0013	STANDARD ARM PAD - FULL LENGTH	19	2	TRH0349	1/4-20 x 5/8" FLAT SOCKET CAP SCREW
8C	1	TRM0002	FLAT ARM PAD - DESK LENGTH	20	1	TRH0493	5/16-18 x 3/4" HEX HEAD CAP SCREW
8D	N/S	TRM0003	FLAT ARM PAD - FULL LENGTH	21	2	TRH0507	5/16-18 x 7/8" HEX HEAD CAP SCREW
8E	1	TRM0323	CONTOUR ARM TROUGH - LEFT	22	1	TRH0535	1/2 x 1 3/4" SOCKET HEAD SHOULDER BOLT
9	1	TRM0130	7/8" ROUND FLAT ROD CAP				

TRC0510 - RECLINE ARM REST ASS'Y, RIGHT, 1" OFF-SET

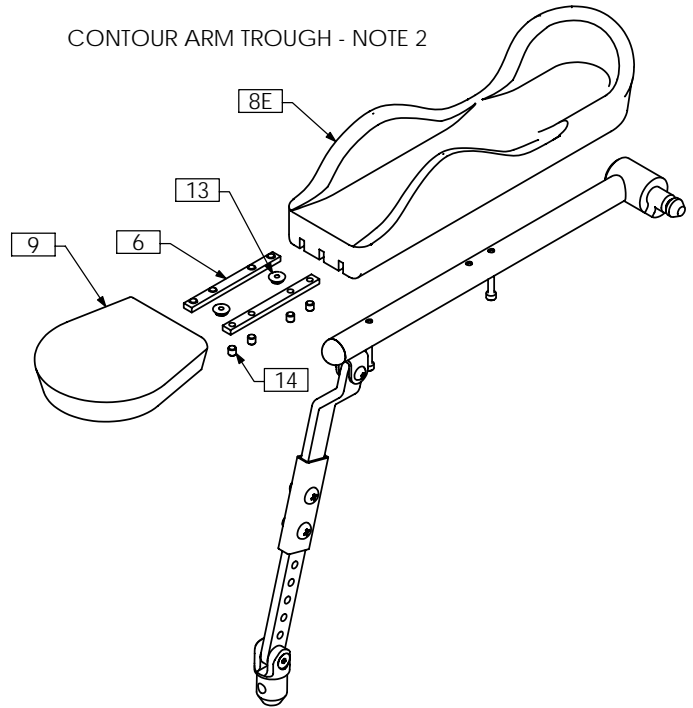
STANDARD ARM PAD



FLAT ARM PAD - NOTE 2



CONTOUR ARM TROUGH - NOTE 2

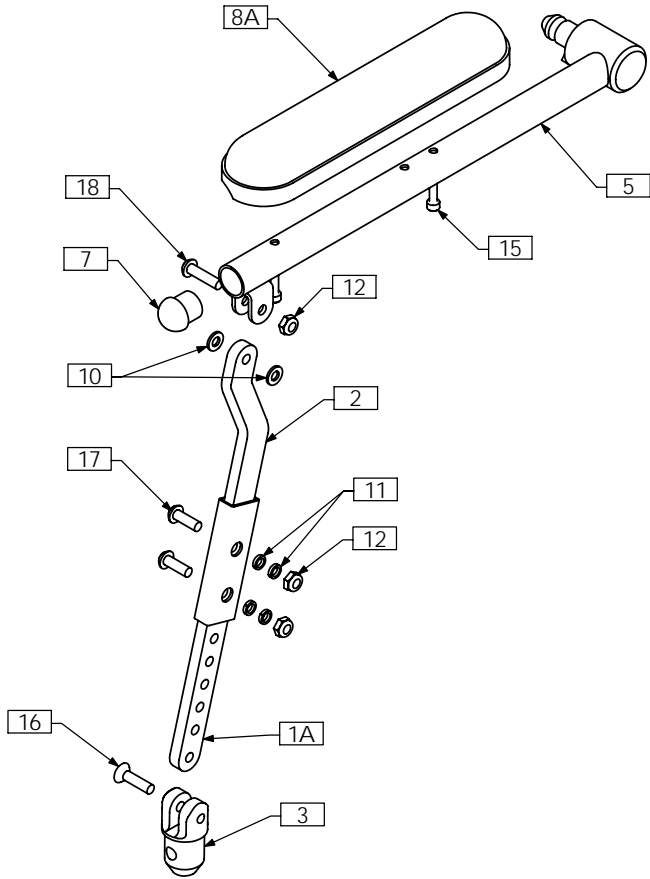


NOTES:
 1. N/S = NOT SHOWN
 2. OPTIONAL - AS PER ORDER

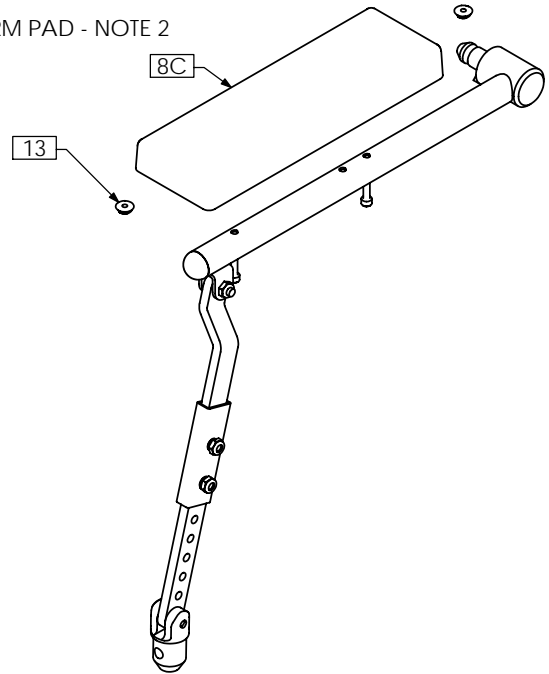
ITEM NO.	QTY.	PART NO.	DESCRIPTION	ITEM NO.	QTY.	PART NO.	DESCRIPTION
1A	1	TRX0335	PIVOT ARM BAR	8D N/S	1	TRM0003	FLAT ARM PAD - FULL LENGTH
1B N/S	1	TRX2021	EXTENDED PIVOT ARM BAR	8E	1	TRM0324	CONTOUR ARM TROUGH - RIGHT
2	1	TRX2679	ARMREST PIVOT WLD, 1" OFFSET	9	1	TRM0325	FLAT HAND PAD
3	1	TRX0339	LOWER PLUG	10	2	TRH0102	¼" NYLON WASHER
4A N/S	1	TRX0352	ARMREST EXTENSION	11	4	TRH0113	¼" HI COLLAR LOCK WASHER
4B N/S	1	TRX1549	ARMREST EXTENSION	12	3	TRH0202	¼-20 SHALLOW NYLOC NUT
5	1	TRX1390	RIGHT ARMREST WLD	13	2	TRH0209	#10-32 HEX FLANGE NUT
6	2	TRX1644	CLAMPING BAR	14	8	TRH0336	SET SCREW, 0.25 x 0.25
7	1	TRM0012	ROD CAP	15	2	TRH0337	#10-32 x 1¼" SOCKET HEAD CAP SCREW GR8
8A	1	TRM0019	STANDARD ARM PAD - DESK LENGTH	16	1	TRH0394	¼-20 x 1" FLAT SOCKET CAP SCREW
8B N/S	1	TRM0013	STANDARD ARM PAD - FULL LENGTH	17	2	TRH0445	¼-20 x ¾" BUTTON SOCKET CAP SCREW
8C	1	TRM0002	FLAT ARM PAD - DESK LENGTH	18	1	TRH0450	¼-20 x 1" BUTTON SOCKET CAP SCREW

TRC0511 - RECLINE ARM REST ASS'Y, LEFT, 1" OFF-SET

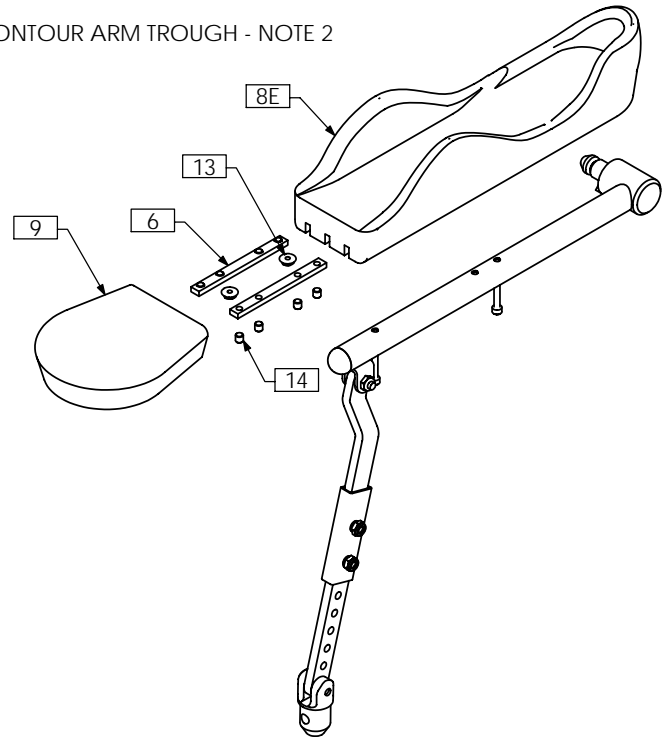
STANDARD ARM PAD



FLAT ARM PAD - NOTE 2



CONTOUR ARM TROUGH - NOTE 2



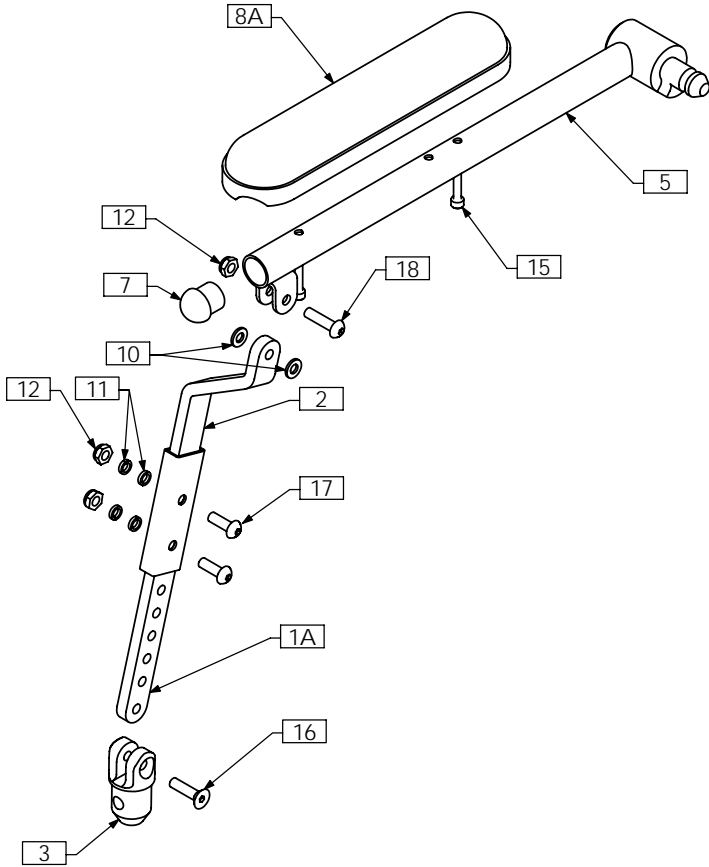
NOTES:

- 1. N/S = NOT SHOWN
- 2. OPTIONAL - AS PER ORDER

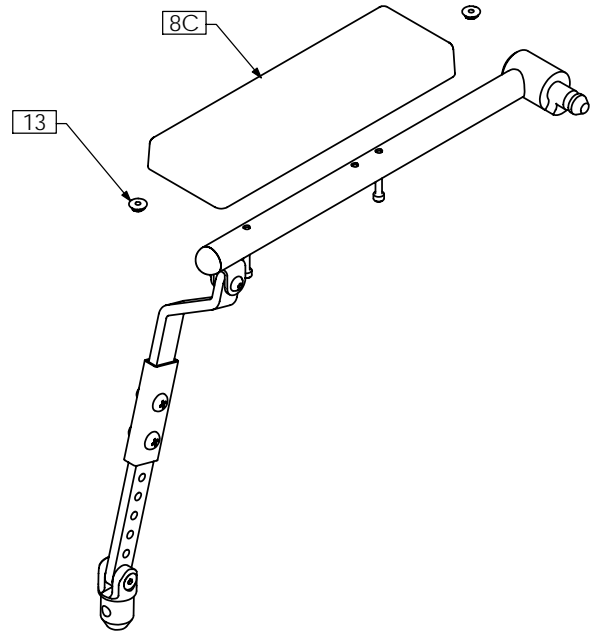
ITEM NO.	QTY.	PART NO.	DESCRIPTION	ITEM NO.	QTY.	PART NO.	DESCRIPTION
1A	1	TRX0335	PIVOT ARM BAR	8D N/S	1	TRM0003	FLAT ARM PAD - FULL LENGTH
1B N/S	1	TRX2021	EXTENDED PIVOT ARM BAR	8E	1	TRM0323	CONTOUR ARM TROUGH - LEFT
2	1	TRX2679	ARMREST PIVOT WLD, 1" OFFSET	9	1	TRM0325	FLAT HAND PAD
3	1	TRX0339	LOWER PLUG	10	2	TRH0102	¼" NYLON WASHER
4A N/S	1	TRX0352	ARMREST EXTENSION	11	4	TRH0113	¼" HI COLLAR LOCK WASHER
4B N/S	1	TRX1549	ARMREST EXTENSION	12	3	TRH0202	¼-20 SHALLOW NYLOC NUT
5	1	TRX1389	LEFT ARM WLD	13	2	TRH0209	#10-32 HEX FLANGE NUT
6	2	TRX1644	CLAMPING BAR	14	8	TRH0336	SET SCREW, 0.25 x 0.25
7	1	TRM0012	ROD CAP	15	2	TRH0337	#10-32 x 1¼" SOCKET HEAD CAP SCREW GR8
8A	1	TRM0019	STANDARD ARM PAD - DESK LENGTH	16	1	TRH0394	¼-20 x 1" FLAT SOCKET CAP SCREW
8B N/S	1	TRM0013	STANDARD ARM PAD - FULL LENGTH	17	2	TRH0445	¼-20 x ¾" BUTTON SOCKET CAP SCREW
8C	1	TRM0002	FLAT ARM PAD - DESK LENGTH	18	1	TRH0450	¼-20 x 1" BUTTON SOCKET CAP SCREW

TRC0516 - RECLINE ARM REST ASS'Y, RIGHT, 2" OFF-SET

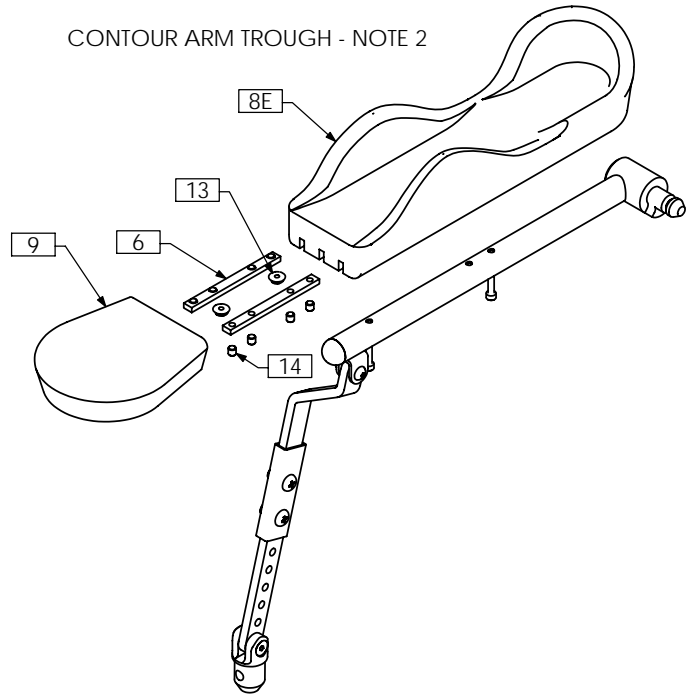
STANDARD ARM PAD



FLAT ARM PAD - NOTE 2



CONTOUR ARM TROUGH - NOTE 2

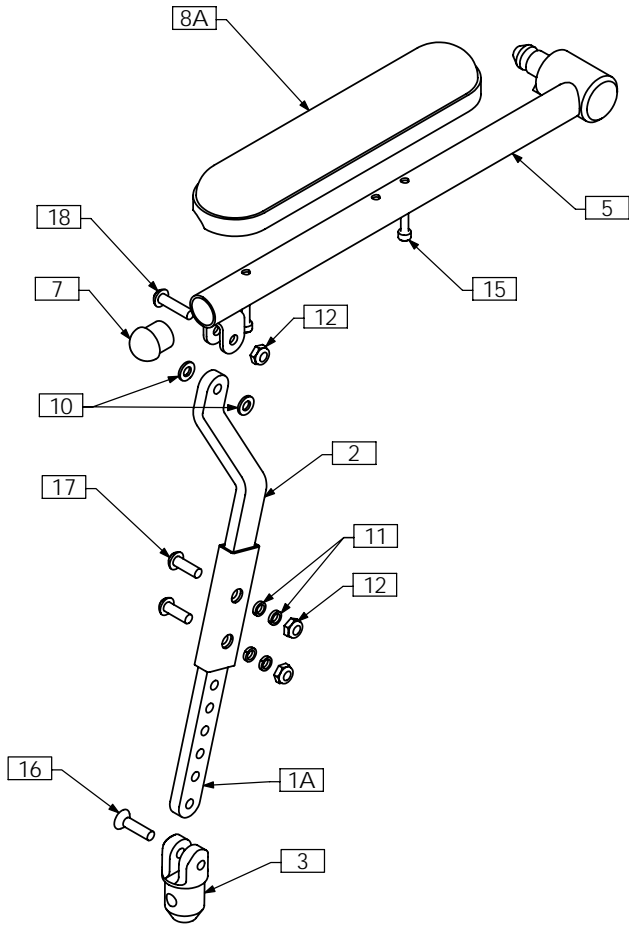


NOTES:
 1. N/S = NOT SHOWN
 2. OPTIONAL - AS PER ORDER

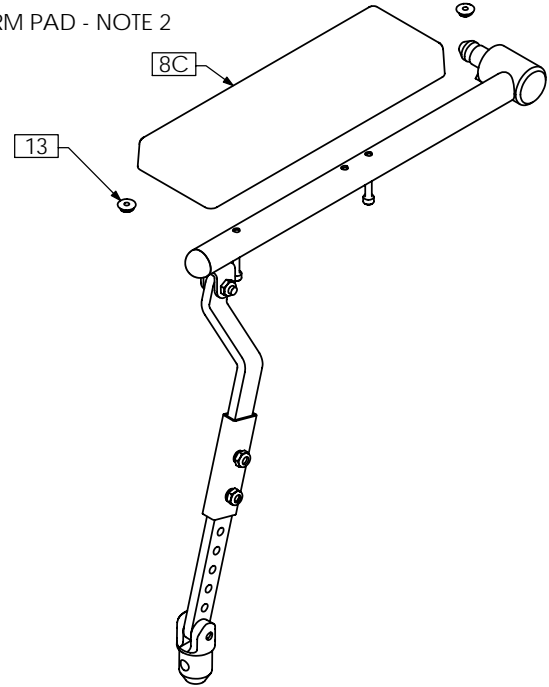
ITEM NO.	QTY.	PART NO.	DESCRIPTION	ITEM NO.	QTY.	PART NO.	DESCRIPTION
1A	1	TRX0335	PIVOT ARM BAR	8D N/S	1	TRM0003	FLAT ARM PAD - FULL LENGTH
1B N/S	1	TRX2021	EXTENDED PIVOT ARM BAR	8E	1	TRM0324	CONTOUR ARM TROUGH - RIGHT
2	1	TRX2681	ARMREST PIVOT WLD, 2" OFFSET	9	1	TRM0325	FLAT HAND PAD
3	1	TRX0339	LOWER PLUG	10	2	TRH0102	1/4" NYLON WASHER
4A N/S	1	TRX0352	ARMREST EXTENSION	11	4	TRH0113	1/4" HI COLLAR LOCK WASHER
4B N/S	1	TRX1549	ARMREST EXTENSION	12	3	TRH0202	1/4-20 SHALLOW NYLOC NUT
5	1	TRX1390	RIGHT ARMREST WLD	13	2	TRH0209	#10-32 HEX FLANGE NUT
6	2	TRX1644	CLAMPING BAR	14	8	TRH0336	SET SCREW, 0.25 x 0.25
7	1	TRM0012	ROD CAP	15	2	TRH0337	#10-32 x 1 1/4" SOCKET HEAD CAP SCREW GR8
8A	1	TRM0019	STANDARD ARM PAD - DESK LENGTH	16	1	TRH0394	1/4-20 x 1" FLAT SOCKET CAP SCREW
8B N/S	1	TRM0013	STANDARD ARM PAD - FULL LENGTH	17	2	TRH0445	1/4-20 x 3/4" BUTTON SOCKET CAP SCREW
8C	1	TRM0002	FLAT ARM PAD - DESK LENGTH	18	1	TRH0450	1/4-20 x 1" BUTTON SOCKET CAP SCREW

TRC0517 - RECLINE ARM REST ASS'Y, LEFT, 2" OFF-SET

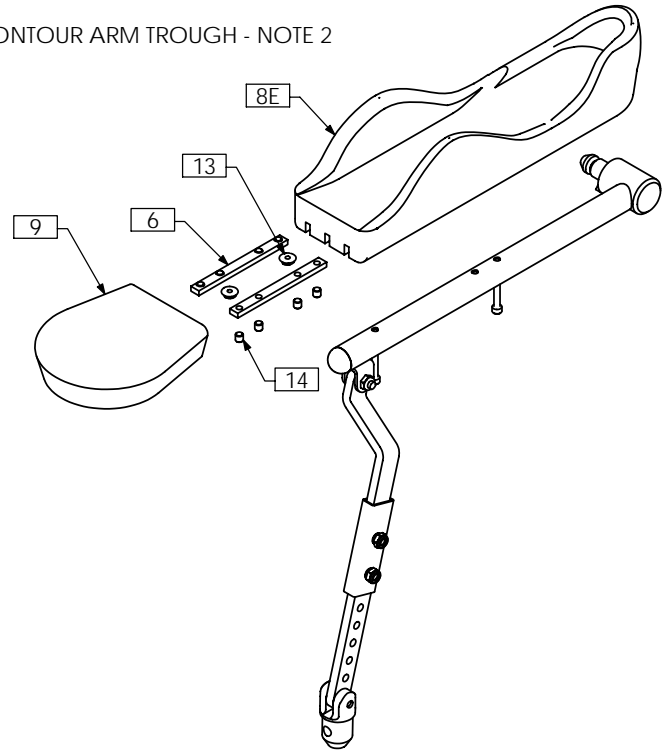
STANDARD ARM PAD



FLAT ARM PAD - NOTE 2



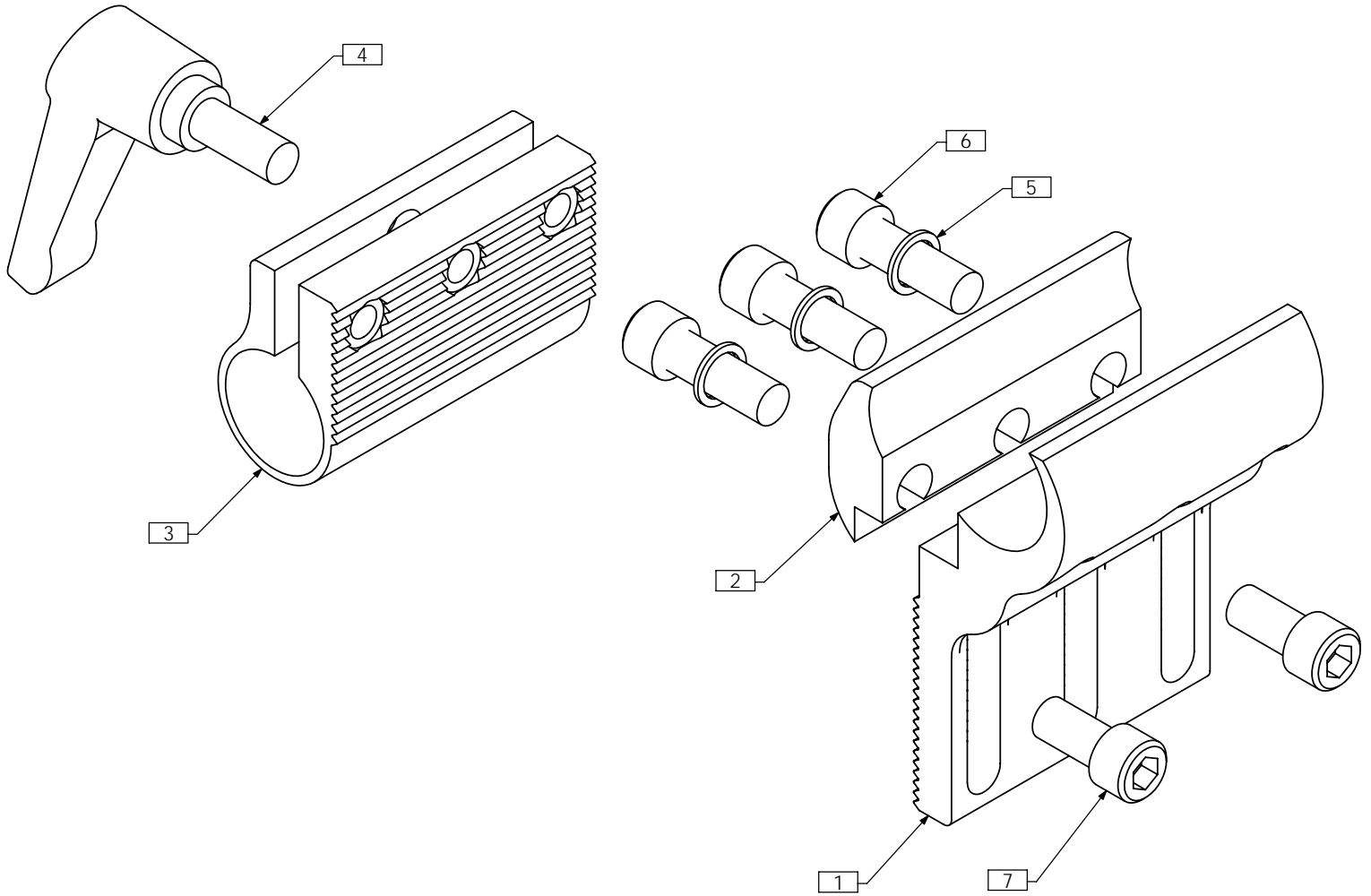
CONTOUR ARM TROUGH - NOTE 2



NOTES:
 1. N/S = NOT SHOWN
 2. OPTIONAL - AS PER ORDER

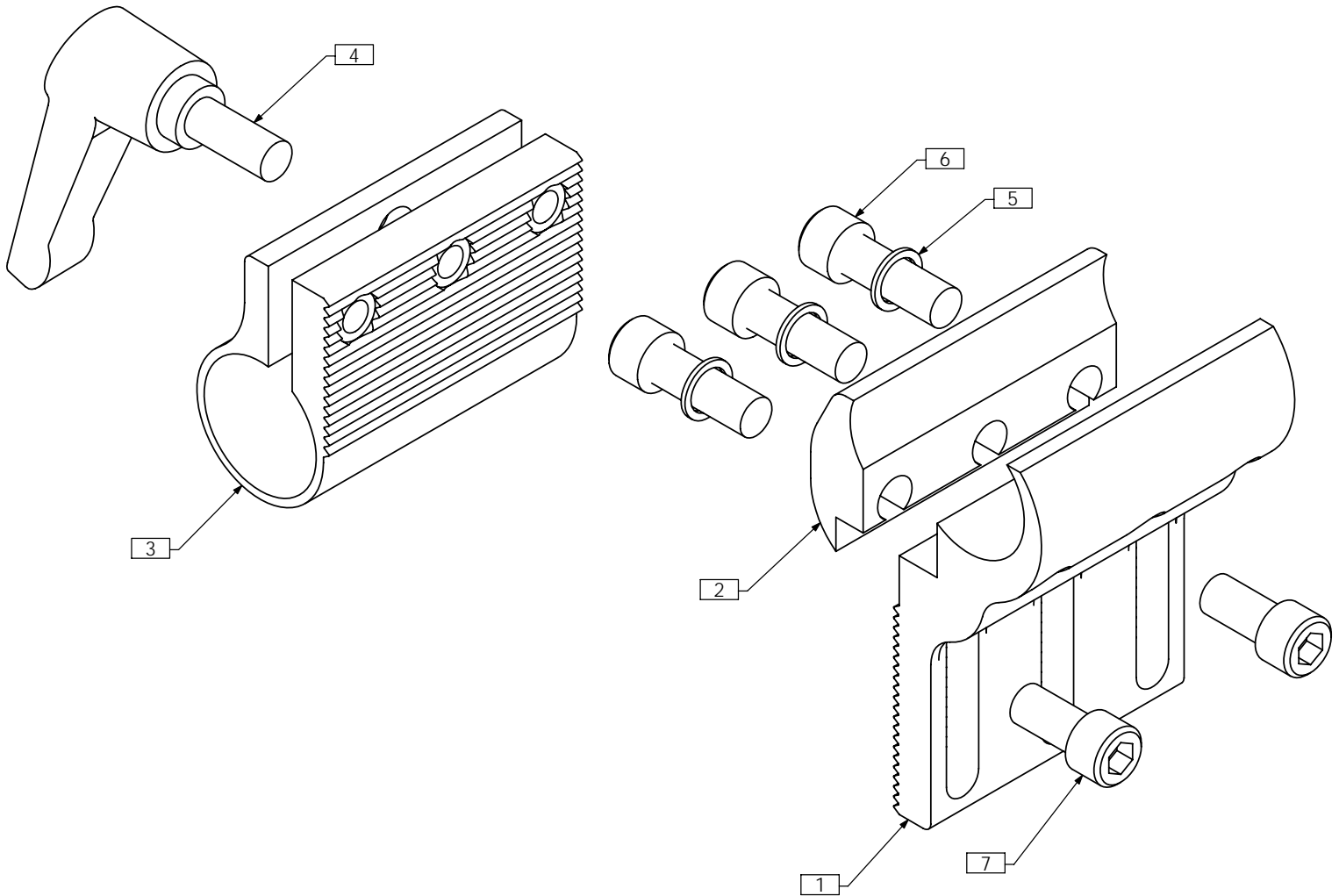
ITEM NO.	QTY.	PART NO.	DESCRIPTION	ITEM NO.	QTY.	PART NO.	DESCRIPTION
1A	1	TRX0335	PIVOT ARM BAR	8D N/S	1	TRM0003	FLAT ARM PAD - FULL LENGTH
1B N/S	1	TRX2021	EXTENDED PIVOT ARM BAR	8E	1	TRM0323	CONTOUR ARM TROUGH - LEFT
2	1	TRX2681	ARMREST PIVOT WLD, 2" OFFSET	9	1	TRM0325	FLAT HAND PAD
3	1	TRX0339	LOWER PLUG	10	2	TRH0102	¼" NYLON WASHER
4A N/S	1	TRX0352	ARMREST EXTENSION	11	4	TRH0113	¼" HI COLLAR LOCK WASHER
4B N/S	1	TRX1549	ARMREST EXTENSION	12	3	TRH0202	¼-20 SHALLOW NYLOC NUT
5	1	TRX1389	LEFT ARM WLD	13	2	TRH0209	#10-32 HEX FLANGE NUT
6	2	TRX1644	CLAMPING BAR	14	8	TRH0336	SET SCREW, 0.25 x 0.25
7	1	TRM0012	ROD CAP	15	2	TRH0337	#10-32 x 1¼" SOCKET HEAD CAP SCREW GR8
8A	1	TRM0019	STANDARD ARM PAD - DESK LENGTH	16	1	TRH0394	¼-20 x 1" FLAT SOCKET CAP SCREW
8B N/S	1	TRM0013	STANDARD ARM PAD - FULL LENGTH	17	2	TRH0445	¼-20 x ¾" BUTTON SOCKET CAP SCREW
8C	1	TRM0002	FLAT ARM PAD - DESK LENGTH	18	1	TRH0450	¼-20 x 1" BUTTON SOCKET CAP SCREW

TRC0405 - JOYSTICK CLAMP ASS'Y, 3/4"



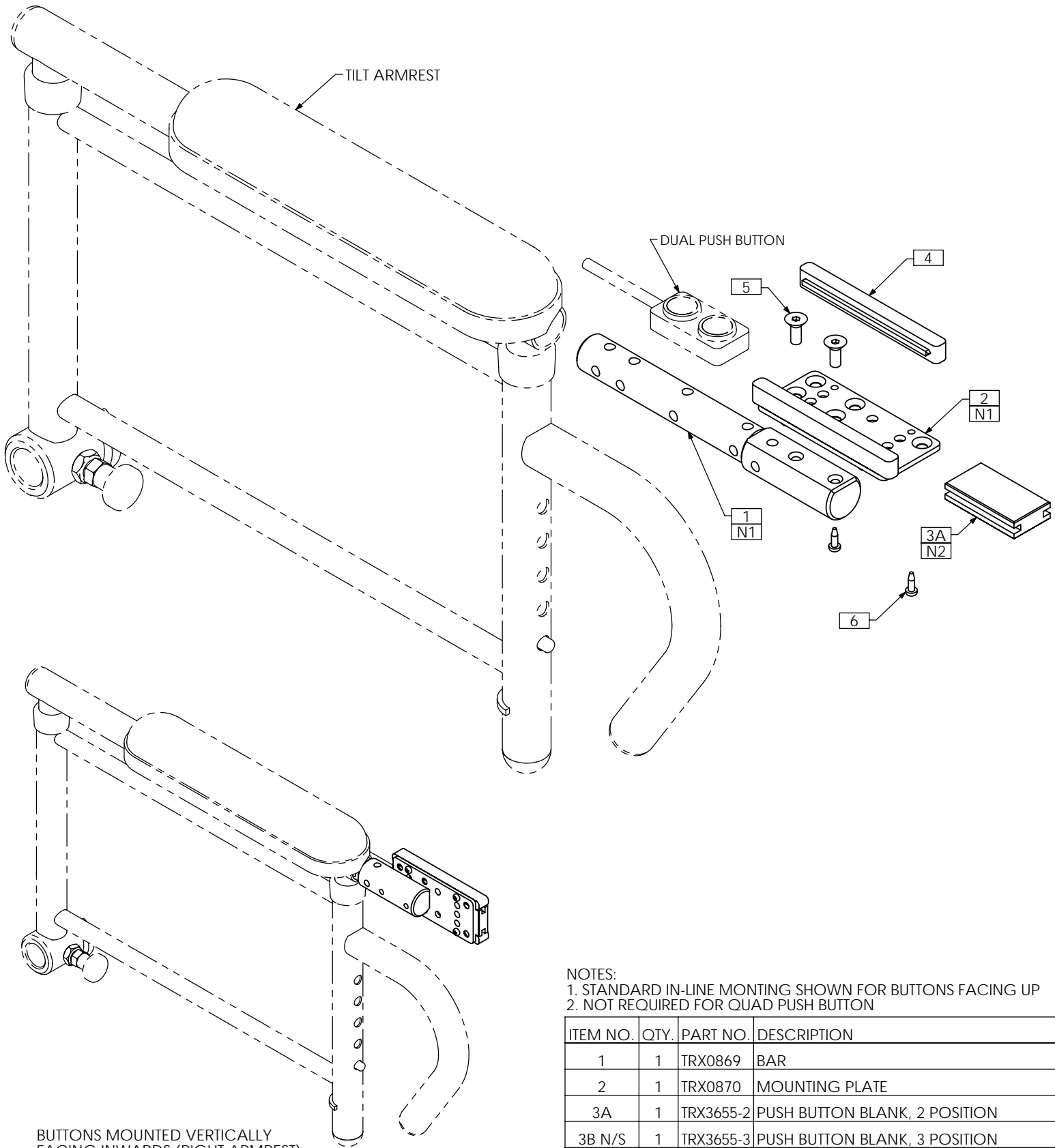
ITEM NO.	QTY.	PART NO.	DESCRIPTION
1	1	TRX2073	ARMREST MOUNT
2	1	TRX2074	ARMREST MOUNT CLAMP
3	1	TRX2075	JOYSTICK BAR CLAMP, 3/4"
4	1	TRM0207	LEVER
5	3	TRH0143	0.281" x 3/8"OD x 0.031" TH FLAT WASHER
6	3	TRH0401	1/4-20 x 3/4" SOCKET HEAD CAP SCREW GR8
7	2	TRH0459	1/4-20 x 1/2" SOCKET HEAD CAP SCREW GR8

TRC0406 - JOYSTICK CLAMP ASS'Y, 7/8"



ITEM NO.	QTY.	PART NO.	DESCRIPTION
1	1	TRX2073	ARMREST MOUNT
2	1	TRX2074	ARMREST MOUNT CLAMP
3	1	TRX2076	JOYSTICK BAR CLAMP, 7/8"
4	1	TRM0207	LEVER
5	3	TRH0143	0.281" x 3/8"OD x 0.031" TH FLAT WASHER
6	3	TRH0401	1/4-20 x 3/4" SOCKET HEAD CAP SCREW GR8
7	2	TRH0459	1/4-20 x 1/2" SOCKET HEAD CAP SCREW GR8

TRC0575 - ARMREST CONTROL MOUNTING ASS'Y, PUSH BUTTON

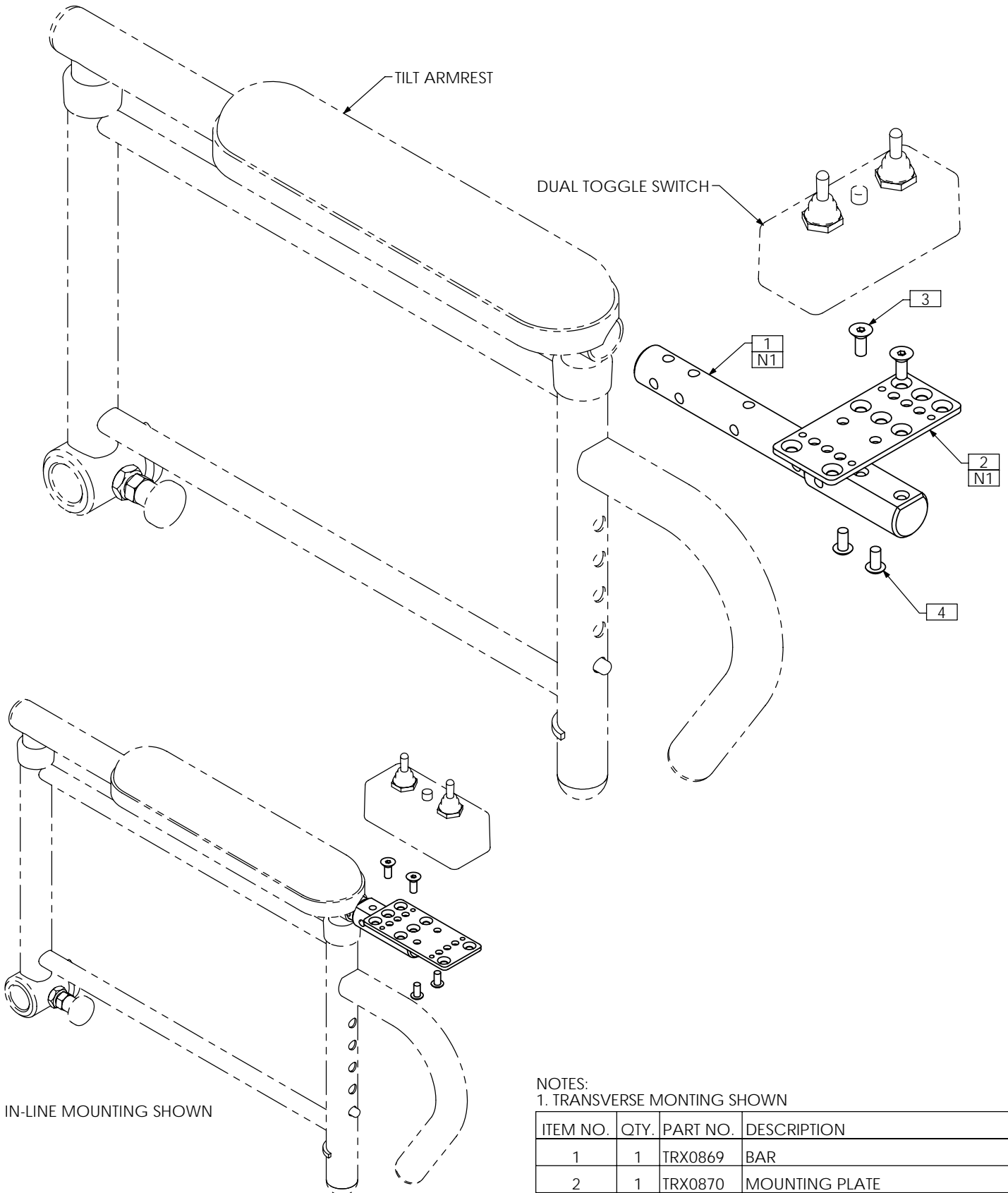


BUTTONS MOUNTED VERTICALLY
FACING INWARDS (RIGHT ARMREST)

NOTES:
1. STANDARD IN-LINE MONTING SHOWN FOR BUTTONS FACING UP
2. NOT REQUIRED FOR QUAD PUSH BUTTON

ITEM NO.	QTY.	PART NO.	DESCRIPTION
1	1	TRX0869	BAR
2	1	TRX0870	MOUNTING PLATE
3A	1	TRX3655-2	PUSH BUTTON BLANK, 2 POSITION
3B N/S	1	TRX3655-3	PUSH BUTTON BLANK, 3 POSITION
4	2	TRX3727	SLIDE RAIL
5	2	TRH0341	#10-32 x 1/2" FLAT SOCKET CAP SCREW
6	4	TRH0578	#4 x 3/8" PAN PHILLIPS TAPPING SCREW

TRC0576 - ARMREST CONTROL MOUNTING ASS'Y, TOGGLE SWITCH

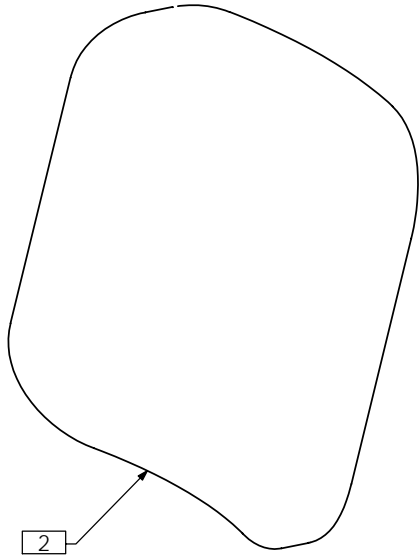


IN-LINE MOUNTING SHOWN

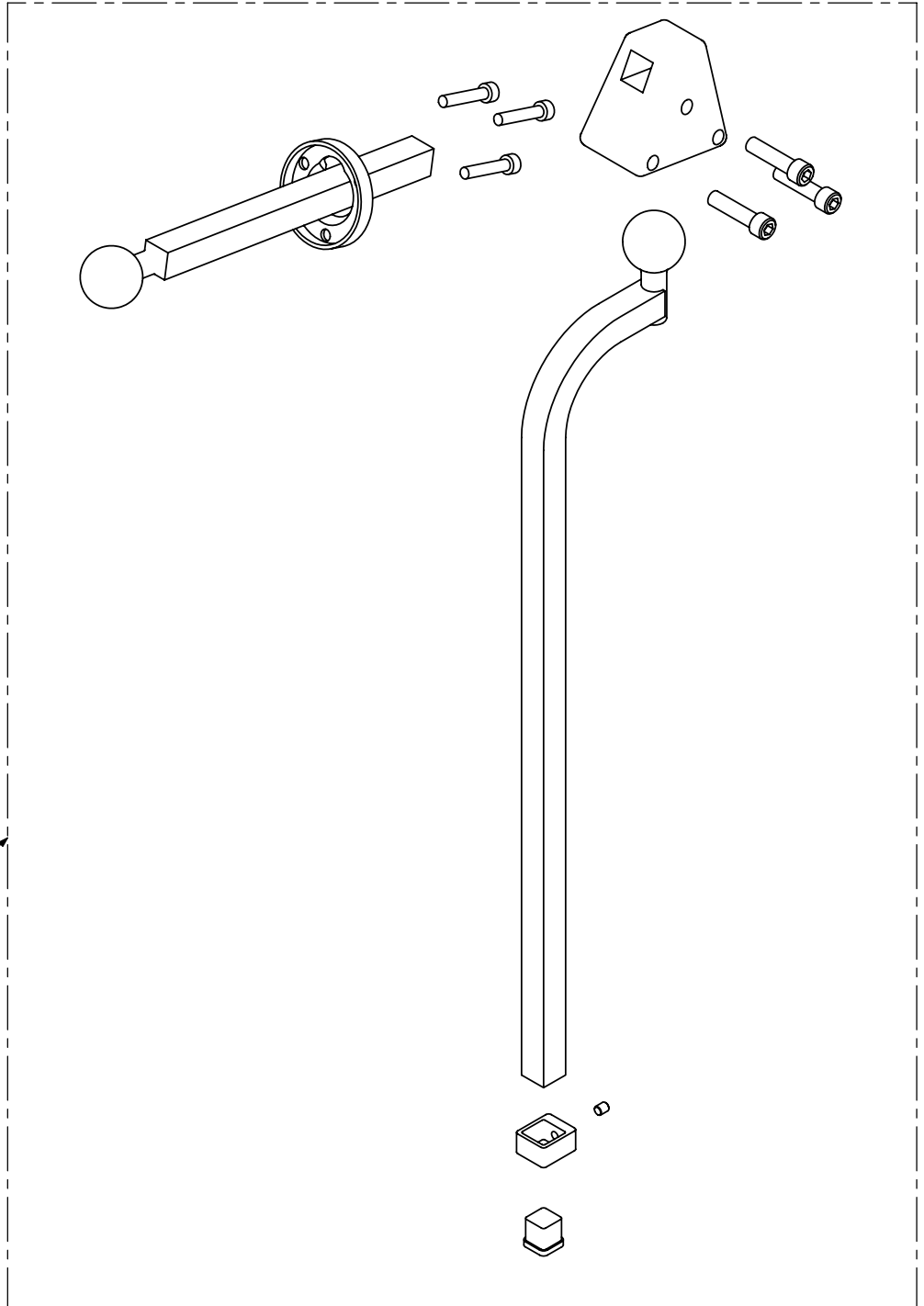
NOTES:
1. TRANSVERSE MONTING SHOWN

ITEM NO.	QTY.	PART NO.	DESCRIPTION
1	1	TRX0869	BAR
2	1	TRX0870	MOUNTING PLATE
3	2	TRH0341	#10-32 x 1/2" FLAT SOCKET CAP SCREW
4	2	TRH0475	#10-32 x 3/8" BUTTON SOCKET CAP SCREW

TRB0303 - HEADREST ASS'Y

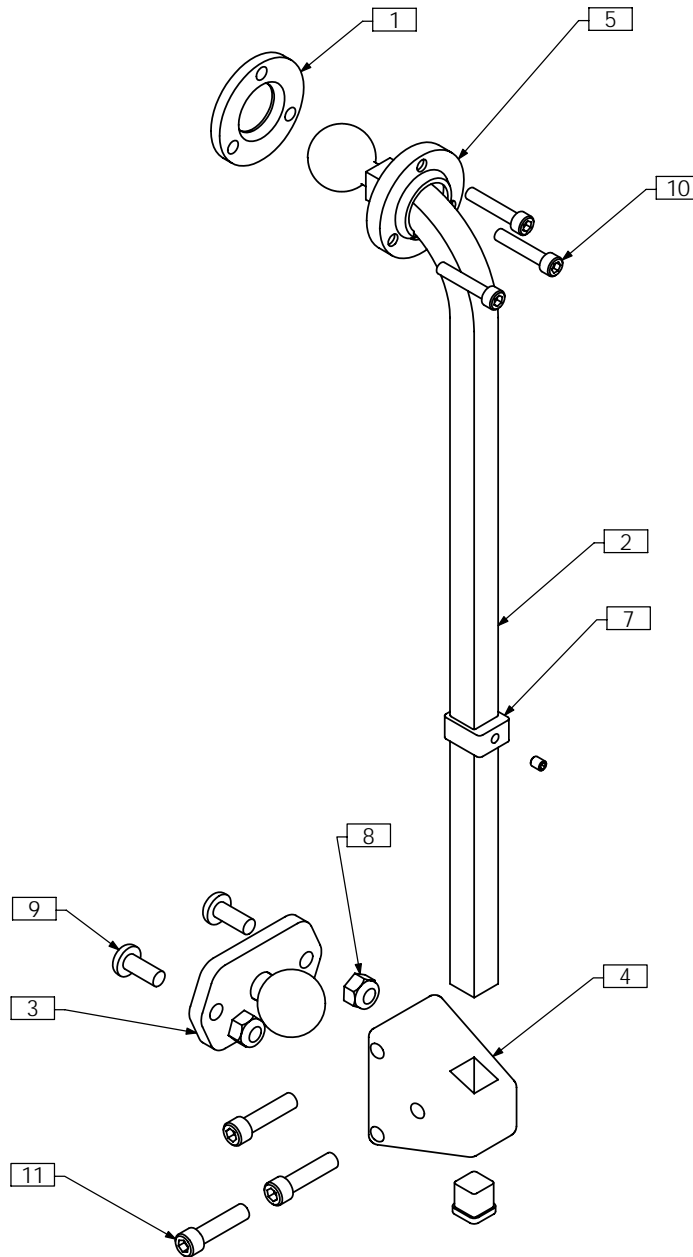


1



ITEM NO.	QTY.	PART NO.	DESCRIPTION
1	1	TRC0108	
	1	TRM0038	LARGE VERTICAL HEADREST ROD
	1	TRM0039	TRIANGULAR MULTI-OFFSET
	1	TRM0037	SMALL HORIZONTAL HEADREST ROD
	1	TRM0040	HEADREST MOUNTING RING
	1	TRM0414	D-RING
	3	TRH0335	1/4-20 x 1" SOCKET HEAD CAP SCREW GR8
	3	TRH0329	#10-32 x 1" SOCKET HEAD CAP SCREW GR8
2	1	TRM0005	HEADREST

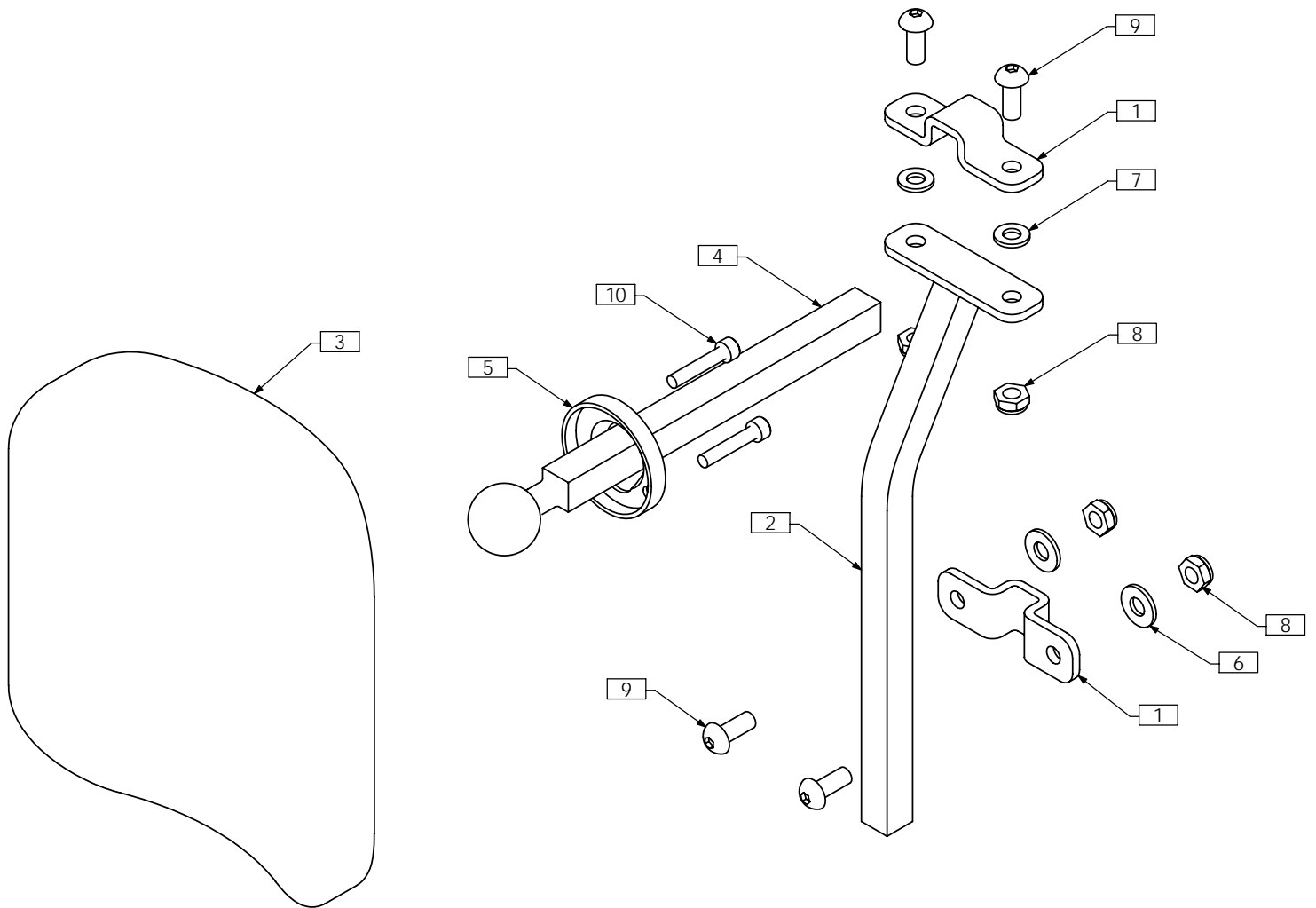
TRB0354 - HEADREST ASS'Y, ONYX SYSTEM



NOTES:
1. N/S = NOT SHOWN

ITEM NO.	QTY.	PART NO.	DESCRIPTION
1	1	TRX1541	MOUNTING PLATE
2	1	TRX1567	TRX HEADREST MNT WLD
3	1	TRX1617	TRX PIVOT BLOCK MNT WLD
4	1	TRM0039	TRIANGULAR MULTI-OFFSET
5	1	TRM0040	HEADREST MOUNTING RING
6 N/S	1	TRM0368	ONYX HEADREST
7	1	TRM0414	D-RING
8	2	TRH0201	1/4-20 NYLOC NUT
9	2	TRH0309	1/4-20 x 5/8" PHILLIPS TRUSS MACHINE SCREW
10	3	TRH0329	#10-32 x 1" SOCKET HEAD CAP SCREW GR8
11	3	TRH0335	1/4-20 x 1" SOCKET HEAD CAP SCREW GR8

TRC0435 - HEADREST ASS'Y, BASIC



ITEM NO.	QTY.	PART NO.	DESCRIPTION
1	2	TRX2539	CLAMP
2	1	TRX2540	MOUNT WLD
3	1	TRM0005	HEADREST
4	1	TRM0037	SMALL HORIZONTAL HEADREST ROD
5	1	TRM0040	HEADREST MOUNTING RING
6	2	TRH0101	¼" FLAT WASHER
7	2	TRH0102	¼" NYLON WASHER
8	4	TRH0202	¼-20 SHALLOW NYLOC NUT
9	4	TRH0308	¼-20 x 5/8" BUTTON SOCKET CAP SCREW
10	3	TRH0329	#10-32 x 1" SOCKET HEAD CAP SCREW GR8

TRC0398 - POWER HEADREST

