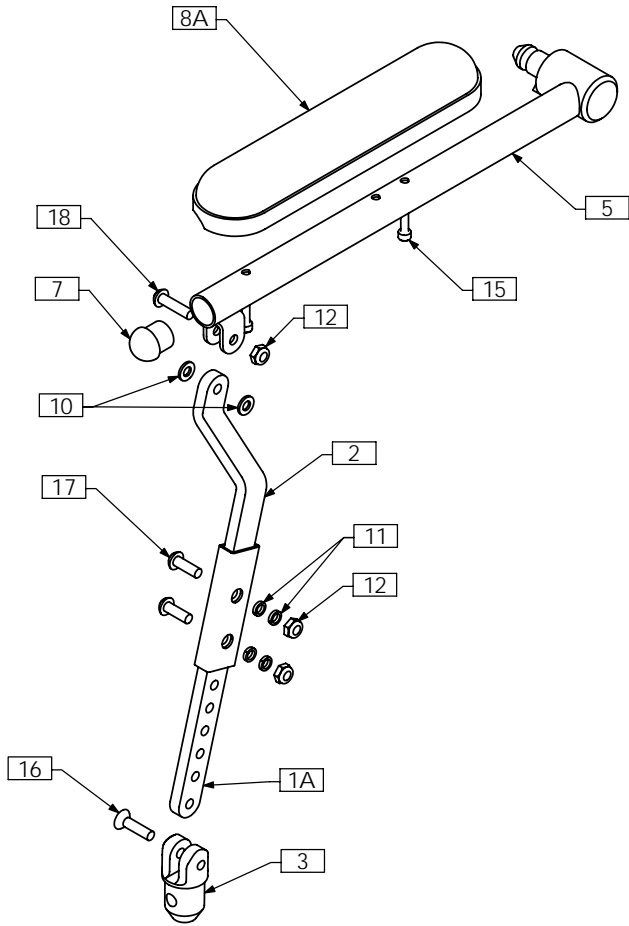
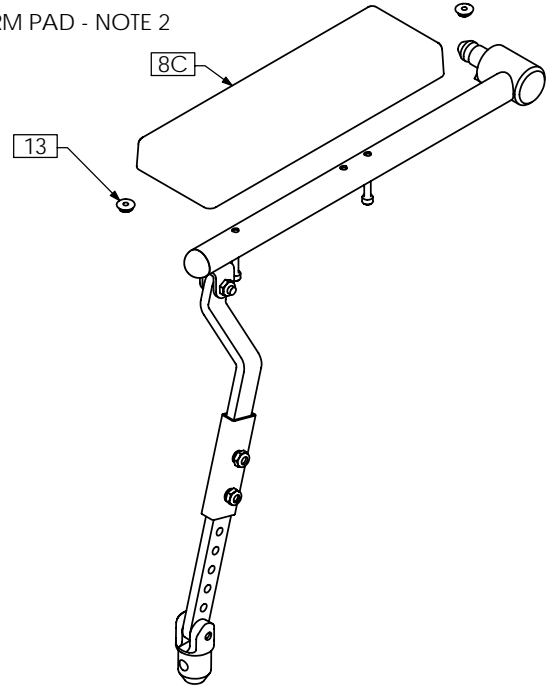


TRC0517 - RECLINE ARM REST ASS'Y, LEFT, 2" OFF-SET

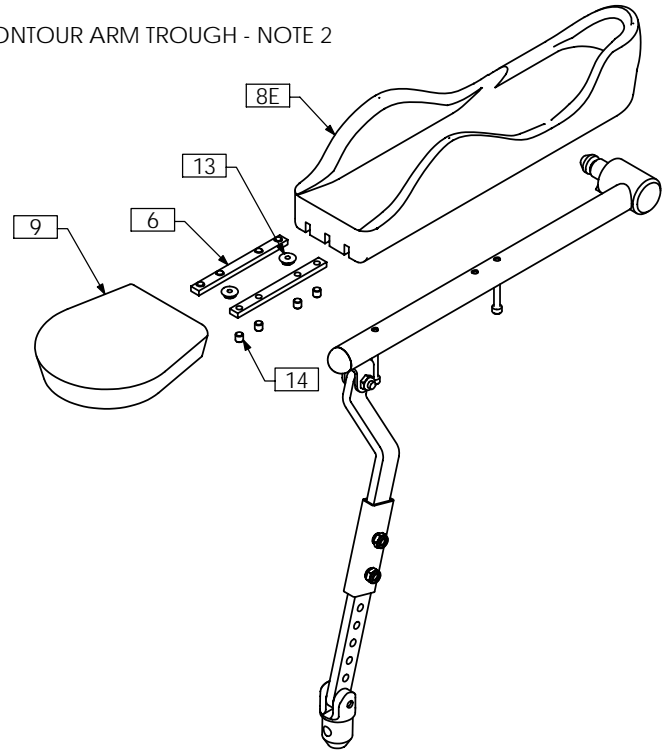
STANDARD ARM PAD



FLAT ARM PAD - NOTE 2



CONTOUR ARM TROUGH - NOTE 2



NOTES:
 1. N/S = NOT SHOWN
 2. OPTIONAL - AS PER ORDER

ITEM NO.	QTY.	PART NO.	DESCRIPTION	ITEM NO.	QTY.	PART NO.	DESCRIPTION
1A	1	TRX0335	PIVOT ARM BAR	8D N/S	1	TRM0003	FLAT ARM PAD - FULL LENGTH
1B N/S	1	TRX2021	EXTENDED PIVOT ARM BAR	8E	1	TRM0323	CONTOUR ARM TROUGH - LEFT
2	1	TRX2681	ARMREST PIVOT WLD, 2" OFFSET	9	1	TRM0325	FLAT HAND PAD
3	1	TRX0339	LOWER PLUG	10	2	TRH0102	¼" NYLON WASHER
4A N/S	1	TRX0352	ARMREST EXTENSION	11	4	TRH0113	¼" HI COLLAR LOCK WASHER
4B N/S	1	TRX1549	ARMREST EXTENSION	12	3	TRH0202	¼-20 SHALLOW NYLOC NUT
5	1	TRX1389	LEFT ARM WLD	13	2	TRH0209	#10-32 HEX FLANGE NUT
6	2	TRX1644	CLAMPING BAR	14	8	TRH0336	SET SCREW, 0.25 x 0.25
7	1	TRM0012	ROD CAP	15	2	TRH0337	#10-32 x 1¼" SOCKET HEAD CAP SCREW GR8
8A	1	TRM0019	STANDARD ARM PAD - DESK LENGTH	16	1	TRH0394	¼-20 x 1" FLAT SOCKET CAP SCREW
8B N/S	1	TRM0013	STANDARD ARM PAD - FULL LENGTH	17	2	TRH0445	¼-20 x ¾" BUTTON SOCKET CAP SCREW
8C	1	TRM0002	FLAT ARM PAD - DESK LENGTH	18	1	TRH0450	¼-20 x 1" BUTTON SOCKET CAP SCREW