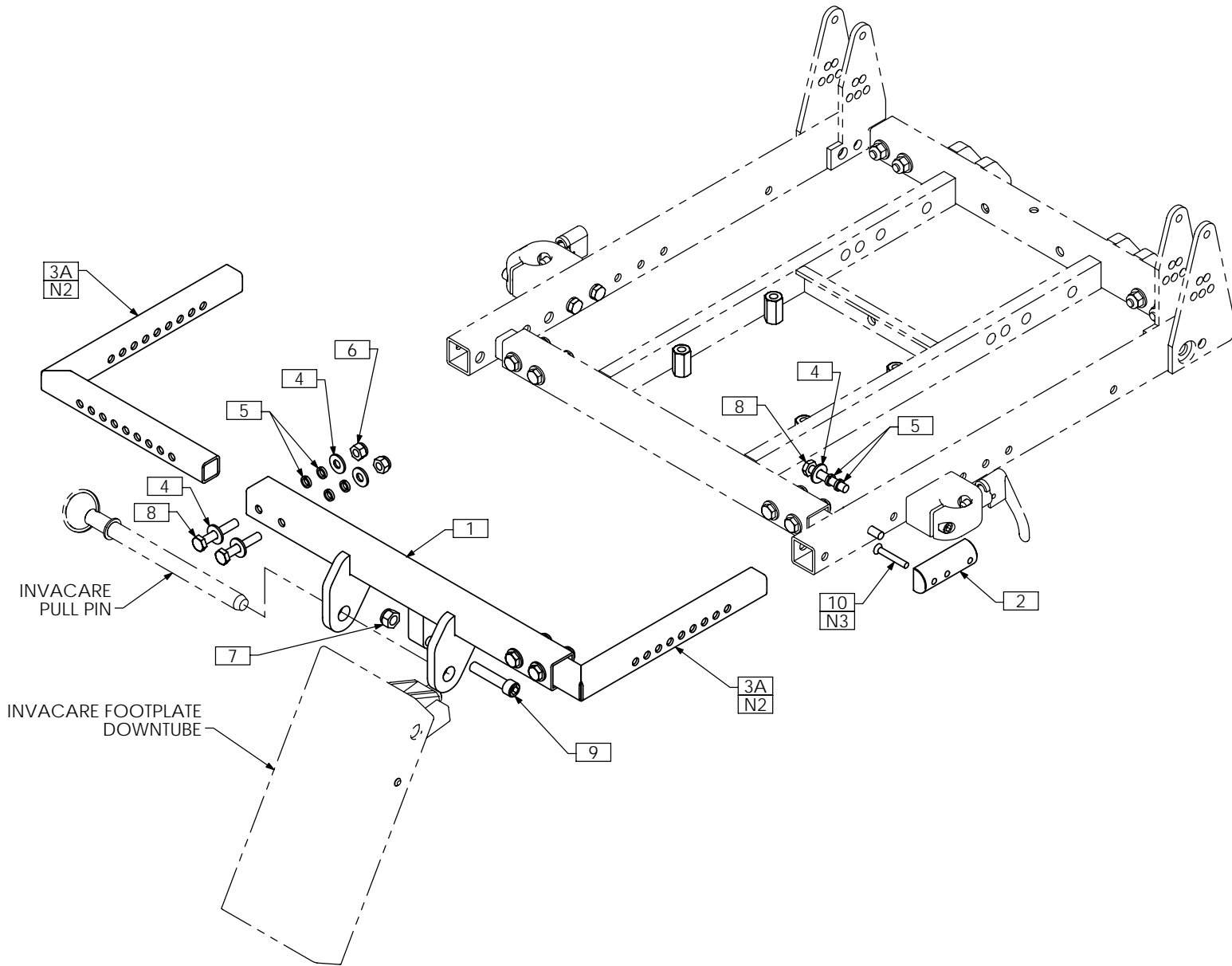


C E N T E R M O U N T



TRC0477 - INVACARE FLIP-UP FOOTPLATE, INTERFACE ASS'Y

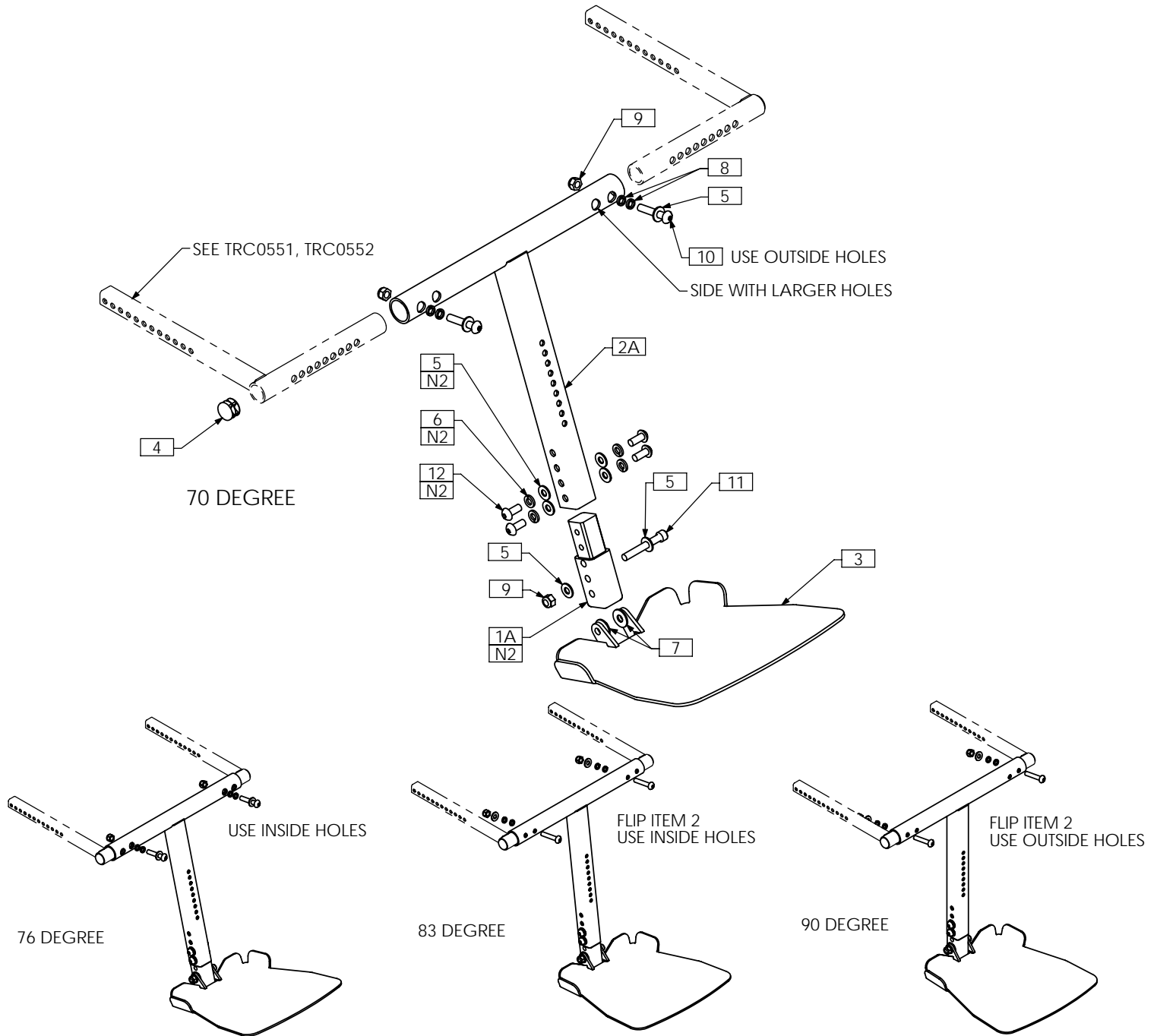


NOTES:

1. N/S = NOT SHOWN
2. USE TRX2961 FOR INVACARE ASBA SEAT
3. SECURE INVACARE RELEASE HANDLE TO MOUNT USING EXISTING INVACARE NUT

ITEM NO.	QTY.	PART NO.	DESCRIPTION
1	1	TRX2354	FOOTREST BRACE WLD
2	1	TRX2352	MOUNT BLOCK
3A	2	TRX2528	FRAME INTERFACE WLD
3B N/S	2	TRX2961	CM FOOTPLATE HANGER WLD
4	10	TRH0101	¼" FLAT WASHER
5	12	TRH0113	¼" HI COLLAR LOCK WASHER
6	4	TRH0201	¼-20 NYLOC NUT
7	1	TRH0206	5/16-18 NYLOC NUT
8	6	TRH0301	¼-20 x 1½" HEX HEAD CAP SCREW
9	1	TRH0332	5/16-18 x 1½" SOCKET HEAD CAP SCREW GR8
10	1	TRH0516	#10-32 x 1¼" FLAT PHILIPS MACHINE SCREW

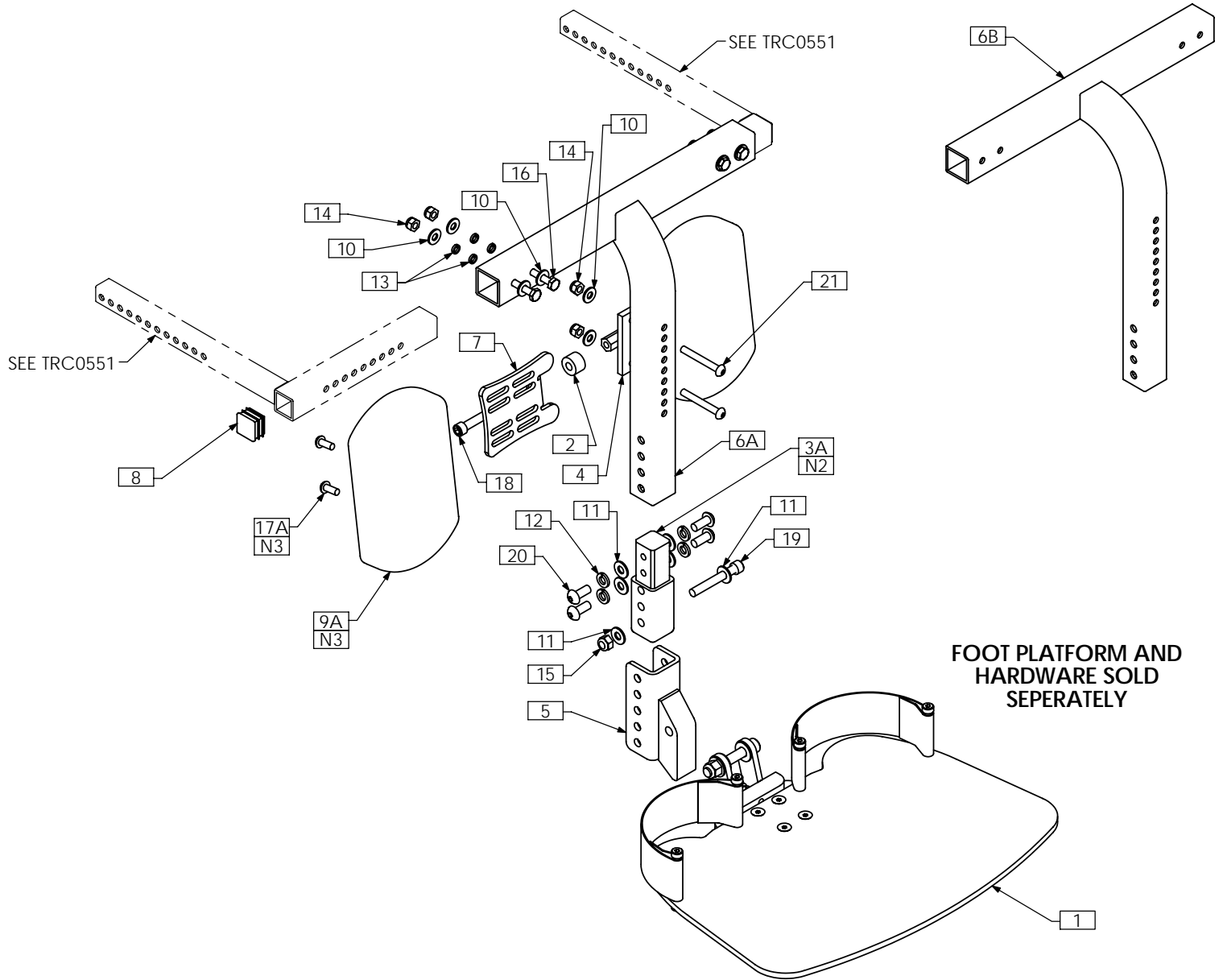
TRC0436 - ADJUSTABLE CENTER MOUNT, FOOT PLATFORM ASS'Y



NOTES:
 1. N/S = NOT SHOWN
 2. ASSEMBLY SHOWN WITH 2.5" EXTENSION. WHEN EXTENSION IS NOT USED, ITEMS 5, 6 AND 12 ARE NOT REQUIRED

ITEM NO.	QTY.	PART NO.	DESCRIPTION	ITEM NO.	QTY.	PART NO.	DESCRIPTION
1A	1	TRX1450	2.5" EXTENSION TUBE	6	4	TRH0108	5/16" LOCK WASHER
1B N/S	1	TRX1451	6.5" EXTENSION TUBE	7	2	TRH0109	5/16" NYLON WASHER
2A	1	TRX2450	MOUNTING WLD, LONG	8	4	TRH0139	5/16" HI COLLAR LOCK WASHER
2B N/S	1	TRX3140	MOUNTING WLD MEDIUM	9	3	TRH0206	5/16-18 NYLOC NUT
2C N/S	1	TRX3141	MOUNTING WLD SHORT	10	2	TRH0321	5/16-18 x 1 3/4" BUTTON SOCKET CAP SCREW
3	1	TRX2453	FOOTPLATE WLD	11	1	TRH0367	5/16-18 x 2 1/4" SOCKET HEAD CAP SCREW GR8
4	2	TRM0130	7/8" ROUND FLAT ROD CAP	12	4	TRH0421	5/16-18 x 3/4" BUTTON SOCKET CAP SCREW
5	8	TRH0107	5/16" FLAT WASHER				

TRC0389 - FIXED CENTER MOUNT, FOOT PLATFORM ASS'Y

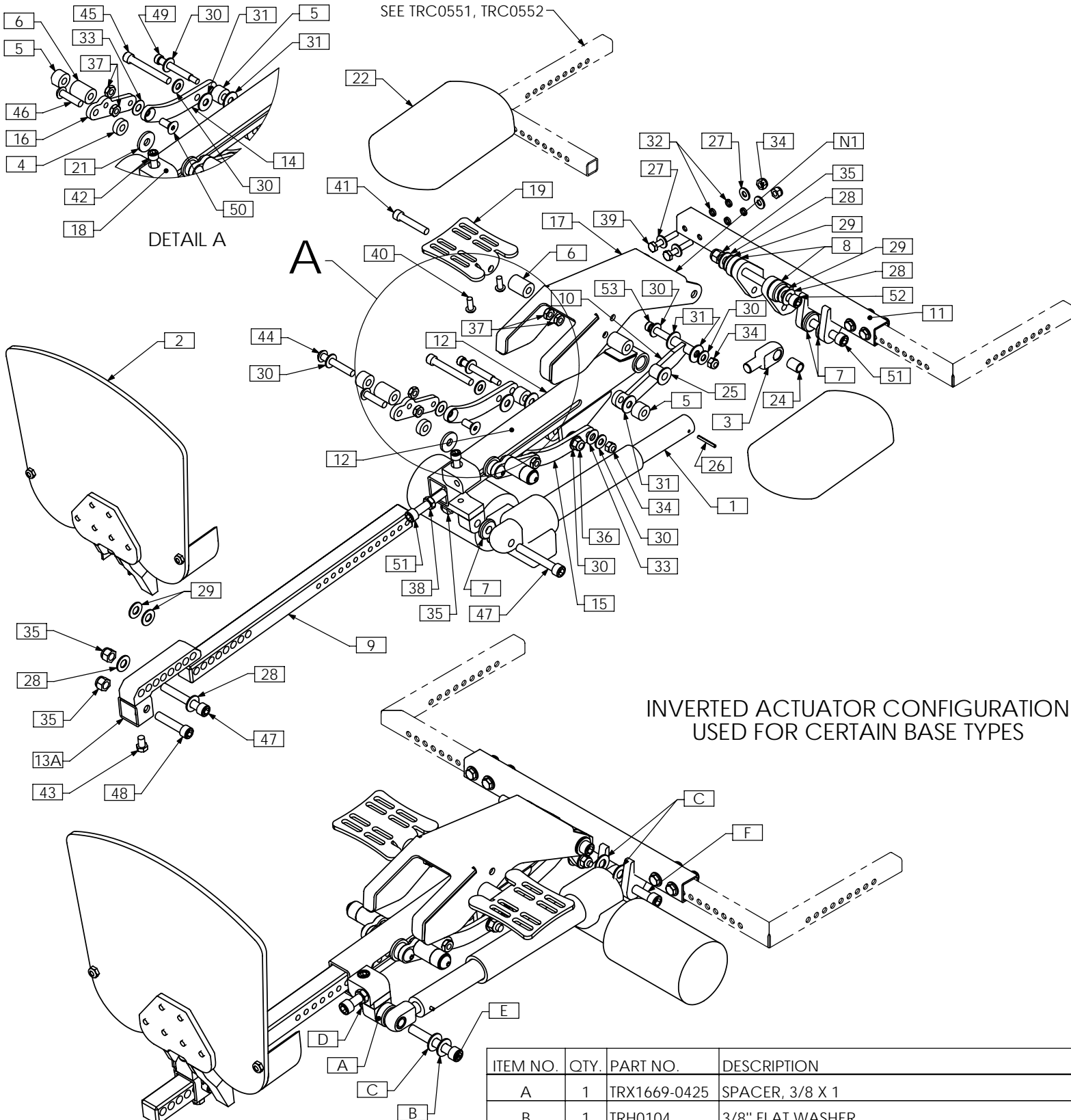


- NOTES:
 1. N/S = NOT SHOWN
 2. ASSEMBLY SHOWN WITH 2.5" EXTENSION.
 3. USE ITEM 17B TO FASTEN P210 CALF PAD - ITEM 9B - NOT SHOWN

ITEM NO.	QTY.	PART NO.	DESCRIPTION	ITEM NO.	QTY.	PART NO.	DESCRIPTION
1	1	TRC0518	CENTER FOOTPLATE ASS'Y	11	6	TRH0107	5/16" FLAT WASHER
2	2	TRX1256-050	SPACER, 5/16 X 3/4	12	4	TRH0108	5/16" LOCK WASHER
3A	1	TRX1450	2.5" EXTENSION TUBE	13	8	TRH0113	1/4" HI COLLAR LOCK WASHER
3B N/S	1	TRX1451	6.5" EXTENSION TUBE	14	6	TRH0201	1/4-20 NYLOC NUT
4	1	TRX1455	CALF PAD MOUNTING PLATE WLD	15	1	TRH0206	5/16-18 NYLOC NUT
5	1	TRX1537	FOOTPLATE ADAPTER WLD	16	4	TRH0302	1/4-20 x 1 3/4" HEX HEAD CAP SCREW
6A	1	TRX1667	CENTER RECEIVER WLD	17A	4	TRH0308	1/4-20 x 5/8" BUTTON SOCKET CAP SCREW
6B	1	TRX1449	CENTER RECEIVER WLD	17B N/S	4	TRH0445	1/4-20 x 3/4" BUTTON SOCKET CAP SCREW
7	2	TRX3198	CALF PAD MOUNTING BRKT	18	2	TRH0334	5/16-18 x 1 1/4" SOCKET HEAD CAP SCREW GR8
8	2	TRM0107	SQUARE TUBE CAP	19	1	TRH0367	5/16-18 x 2 1/4" SOCKET HEAD CAP SCREW GR8
9A	2	TRM0496	CALF PAD	20	4	TRH0421	5/16-18 x 3/4" BUTTON SOCKET CAP SCREW
9B N/S	2	TRM0249	P210 CALF PAD	21	2	TRH0431	1/4-20 x 2" BUTTON SOCKET CAP SCREW
10	10	TRH0101	1/4" FLAT WASHER				

TRC0422 - CENTER MOUNT POWER ELEVATING/EXTENDING, PLATFORM ASS'Y

NOTES:
1. ADD RUBBER EDGE TRIM TO EDGE - ITEM 23



INVERTED ACTUATOR CONFIGURATION
USED FOR CERTAIN BASE TYPES

ITEM NO.	QTY.	PART NO.	DESCRIPTION
A	1	TRX1669-0425	SPACER, 3/8 X 1
B	1	TRH0104	3/8" FLAT WASHER
C	3	TRH0105	3/8" NYLON WASHER
D	1	TRH0204	3/8-16 NYLOC NUT
E	1	TRH0402	3/8-16 x 2 1/2" SOCKET HEAD CAP SCREW GR8
F	1	TRH0477	3/8-16 x 2" SOCKET HEAD CAP SCREW GR8

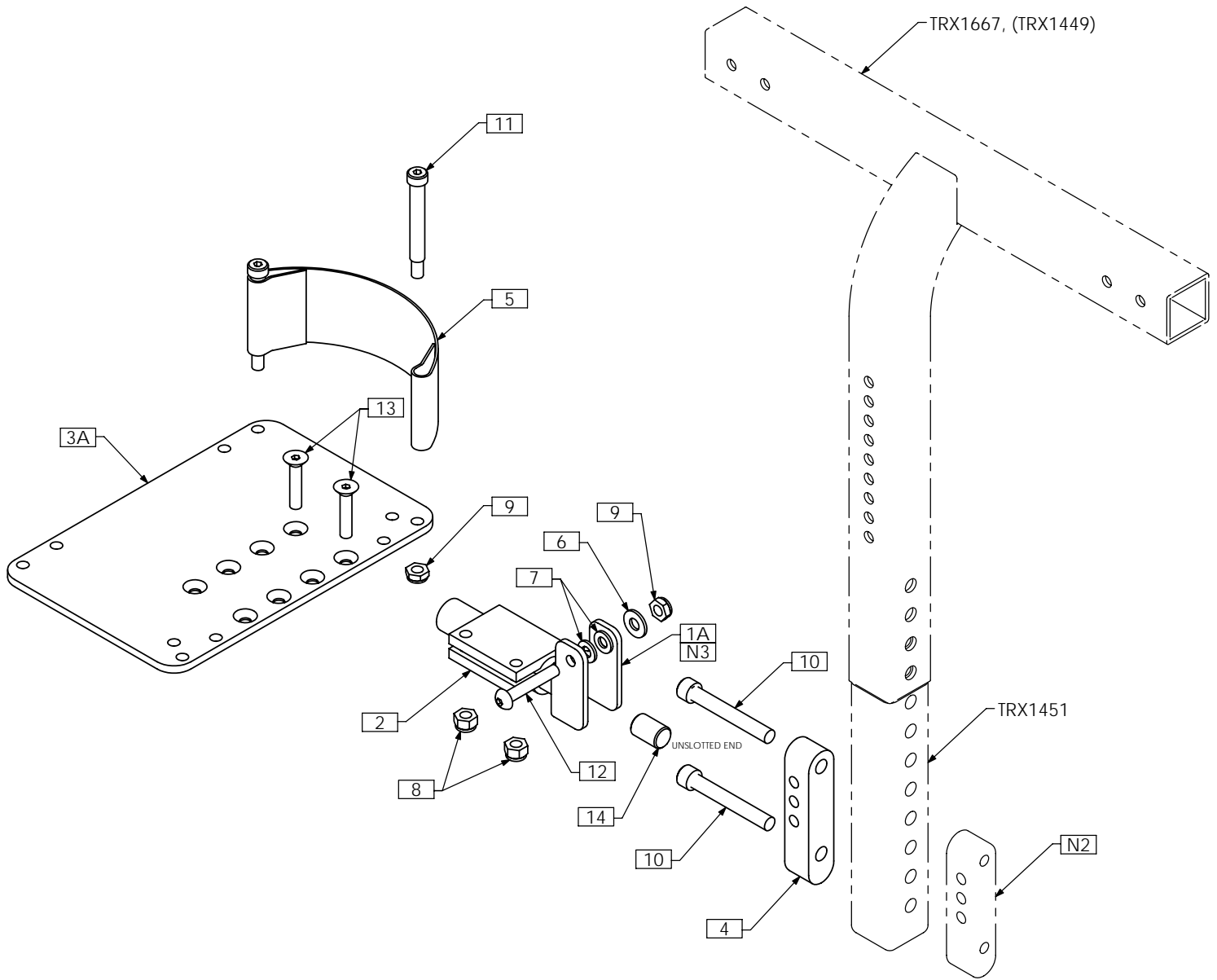
TRC0422 - CENTER MOUNT POWER ELEVATING/EXTENDING, PLATFORM ASS'Y

ITEM NO.	QTY.	PART NO.	DESCRIPTION
1	1	TRA0548	ACTUATOR, 3" STROKE
2	1	TRC0571	CENTER FOOTPLATE ASS'Y
3	1	TRX1148-225	ROD END
4	2	TRX1256-025	SPACER, 5/16 X 3/4
5	4	TRX1256-050	SPACER, 5/16 X 3/4
6	4	TRX1256-100	SPACER, 5/16 X 3/4
7	3	TRX1669-0237	SPACER, 3/8 X 1
8	2	TRX1669-0425	SPACER, 3/8 X 1
9	1	TRX1886	EXTENDING BAR
10	1	TRX1902	ANGLED LINK WLD
11	1	TRX2509	SUPPORT WLD
12	1	TRX2512	MAIN TUBE WLD
13A	1	TRX2515	FOOTPLATE MOUNT WLD
13B N/S	1	TRX2533	FOOTPLATE MOUNT WLD, RAISED
14	1	TRX2516	CURVED LINK, RIGHT
15	1	TRX2517	CURVED LINK, LEFT
16	2	TRX2518	CRANK LINK
17	1	TRX2519	CAM PLATE
18	1	TRX2525	ADJUSTMENT BLOCK
19	2	TRX3198	CALF PAD MOUNTING BRKT
20 N/S	1	TRM0010	RECLINE ACTUATOR BOOT
21	2	TRM0176	P210 SPACER WASHER
22	2	TRM0496	CALF PAD
23 N/S	1	TRM0568	RUBBER EDGE TRIM, SMALL PROFILE
24	1	TRH0005	3/8"ID x 1/2"OD x 5/8" BRONZE BUSHING
25	2	TRH0019	3/8"ID x 5/8"OD x 3/4" FLANGED BRONZE BUSHING
26	1	TRH0034	SLOTTED SPRING, TENSION PIN 0.125 x 1.125
27	8	TRH0101	1/4" FLAT WASHER
28	4	TRH0104	3/8" FLAT WASHER
29	4	TRH0105	3/8" NYLON WASHER
30	8	TRH0107	5/16" FLAT WASHER
31	6	TRH0109	5/16" NYLON WASHER
32	8	TRH0113	1/4" HI COLLAR LOCK WASHER
33	3	TRH0132	0.35"ID x 3/4"OD x 0.032" NYLON WASHER
34	6	TRH0201	1/4-20 NYLOC NUT
35	4	TRH0204	3/8-16 NYLOC NUT
36	1	TRH0206	5/16-18 NYLOC NUT
37	8	TRH0236	5/16-18 SHALLOW HEX JAM NUT
38	1	TRH0238	3/8-16 SHALLOW HEX JAM NUT
39	4	TRH0301	1/4-20 x 1 1/2" HEX HEAD CAP SCREW
40	4	TRH0308	1/4-20 x 5/8" BUTTON SOCKET CAP SCREW
41	2	TRH0315	5/16-18 x 1 3/4" SOCKET HEAD CAP SCREW GR8
42	1	TRH0319	5/16-18 x 7/8" SOCKET HEAD CAP SCREW GR8
43	1	TRH0320	5/16-18 x 1/2" HEX HEAD CAP SCREW
44	2	TRH0338	5/16-18 x 2" BUTTON SOCKET CAP SCREW
45	1	TRH0356	5/16-18 x 2 1/2" SOCKET HEAD CAP SCREW GR8
46	2	TRH0393	5/16-18 x 1 1/4" BUTTON SOCKET CAP SCREW
47	2	TRH0402	3/8-16 x 2 1/2" SOCKET HEAD CAP SCREW GR8
48	1	TRH0403	3/8-16 x 1 3/4" SOCKET HEAD CAP SCREW GR8
49	1	TRH0410	5/16 x 2" SOCKET HEAD SHOULDER BOLT
50	2	TRH0448	5/16-18 x 3/4" FLAT SOCKET CAP SCREW
51	2	TRH0477	3/8-16 x 2" SOCKET HEAD CAP SCREW GR8
52	1	TRH0503	3/8-16 x 5" SOCKET HEAD CAP SCREW GR8
53	1	TRH0541	5/16 x 2 1/2" SOCKET HEAD SHOULDER BOLT

NOTES:

1. N/S = NOT SHOWN

TRC0568 - SPLIT FOOTPLATE ASS'Y, RIGHT, CENTER MOUNT INTERFACE

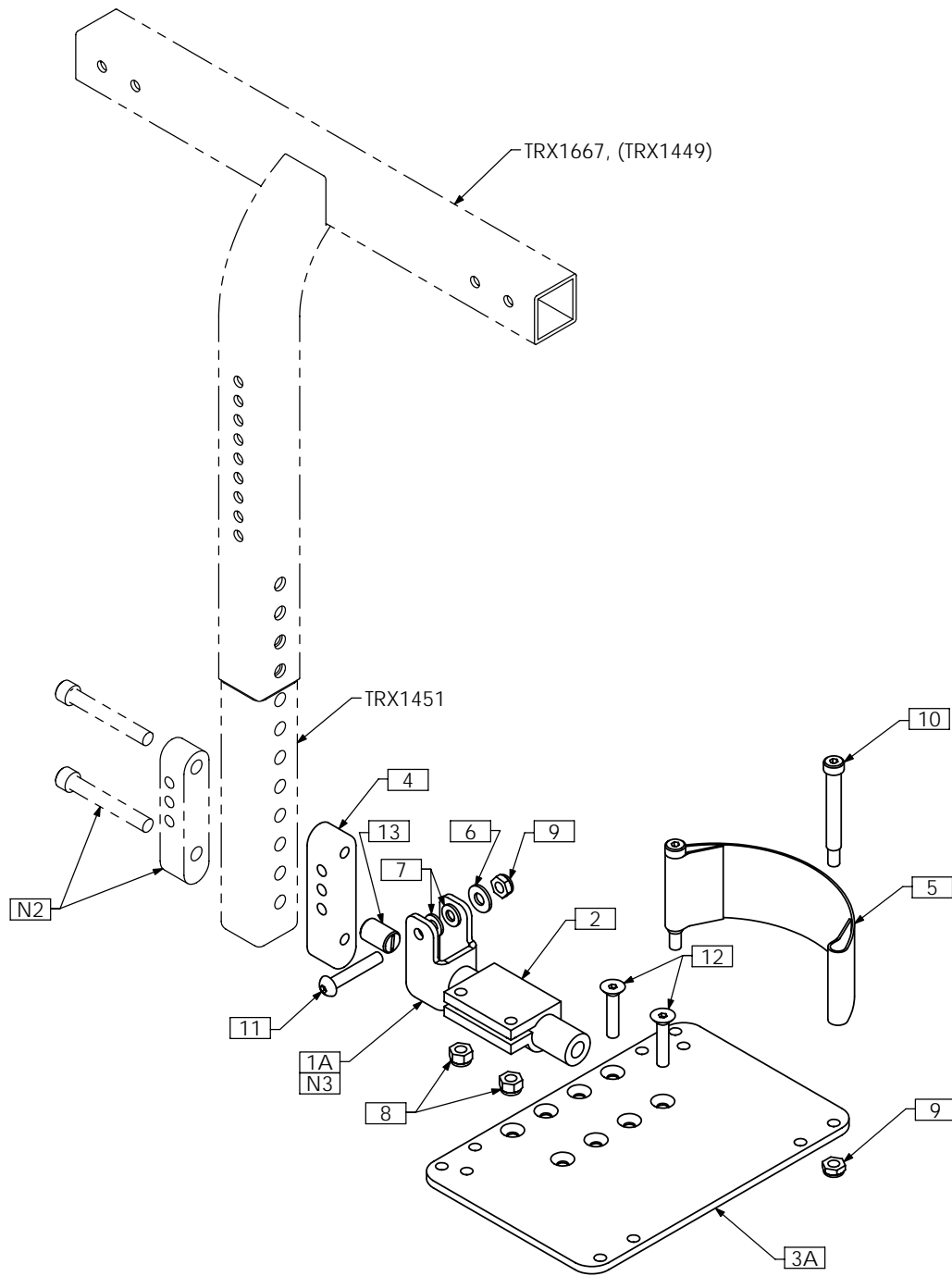


NOTES:

- 1. N/S = NOT SHOWN
- 2. SEE TRC0569 FOR LEFT SIDE PARTS
- 3. USE ITEM 1B FOR BARIATRIC APPLICATIONS

ITEM NO.	QTY.	PART NO.	DESCRIPTION	ITEM NO.	QTY.	PART NO.	DESCRIPTION
1A	1	TRX0706	PIVOT BRACKET WLD	7	2	TRH0102	¼" NYLON WASHER
1B N/S	1	TRX3040	PIVOT BRACKET WLD, BARIATRIC	8	2	TRH0201	¼-20 NYLOC NUT
2	1	TRX0762	CLAMPING BLOCK	9	3	TRH0202	¼-20 SHALLOW NYLOC NUT
3A	1	TRX1138	FOOTPLATE, MEDIUM	10	2	TRH0367	5/16-18 x 2¼" SOCKET HEAD CAP SCREW GR8
3B N/S	1	TRX1136	FOOTPLATE, SMALL	11	2	TRH0410	5/16 x 2" SOCKET HEAD SHOULDER BOLT
3C N/S	1	TRX1137	FOOTPLATE, LARGE	12	1	TRH0420	¼-20 x 1½" BUTTON SOCKET CAP SCREW
4	1	TRX3202	MOUNT BLOCK, C'BORED	13	2	TRH0432	¼-20 x 1¼" FLAT SOCKET CAP SCREW
5	1	TRM0241	HEEL STRAP	14	1	TRH0452	1/2 - 13 NYLON SET SCREW
6	1	TRH0101	¼" FLAT WASHER				

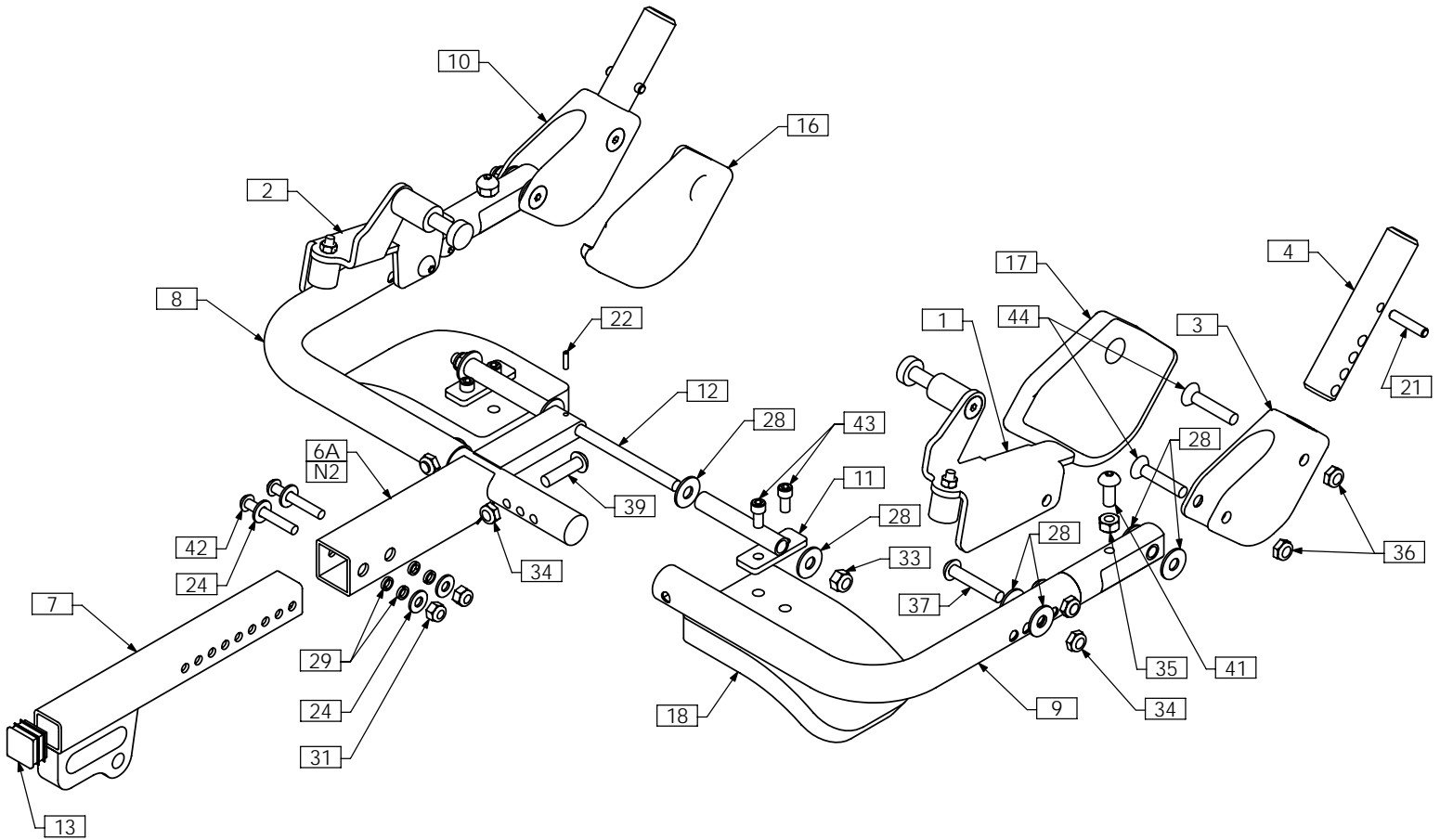
TRC0569 - SPLIT FOOTPLATE ASS'Y, LEFT, CENTER MOUNT INTERFACE



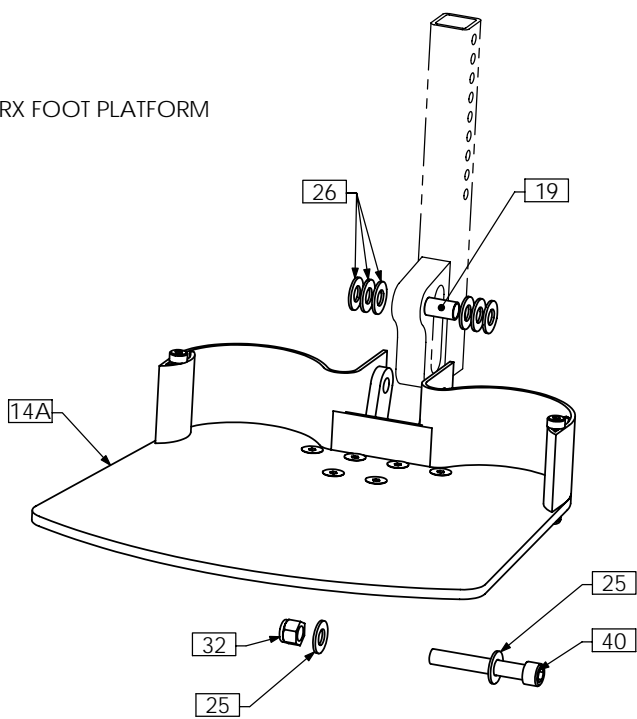
- NOTES:
 1. N/S = NOT SHOWN
 2. SEE TRC0568 FOR RIGHT SIDE PARTS
 3. USE ITEM 1B FOR BARIATRIC APPLICATIONS

ITEM NO.	QTY.	PART NO.	DESCRIPTION	ITEM NO.	QTY.	PART NO.	DESCRIPTION
1A	1	TRX0706	PIVOT BRACKET WLD	6	1	TRH0101	¼" FLAT WASHER
1B N/S	1	TRX3040	PIVOT BRACKET WLD, BARIATRIC	7	2	TRH0102	¼" NYLON WASHER
2	1	TRX0762	CLAMPING BLOCK	8	2	TRH0201	¼-20 NYLOC NUT
3A	1	TRX1138	FOOTPLATE, MEDIUM	9	3	TRH0202	¼-20 SHALLOW NYLOC NUT
3B N/S	1	TRX1136	FOOTPLATE, SMALL	10	2	TRH0410	5/16 x 2" SOCKET HEAD SHOULDER BOLT
3C N/S	1	TRX1137	FOOTPLATE, LARGE	11	1	TRH0420	¼-20 x 1½" BUTTON SOCKET CAP SCREW
4	1	TRX3203	MOUNT BLOCK, THREADED	12	2	TRH0432	¼-20 x 1¼" FLAT SOCKET CAP SCREW
5	1	TRM0241	HEEL STRAP	13	1	TRH0452	1/2 - 13 NYLON SET SCREW

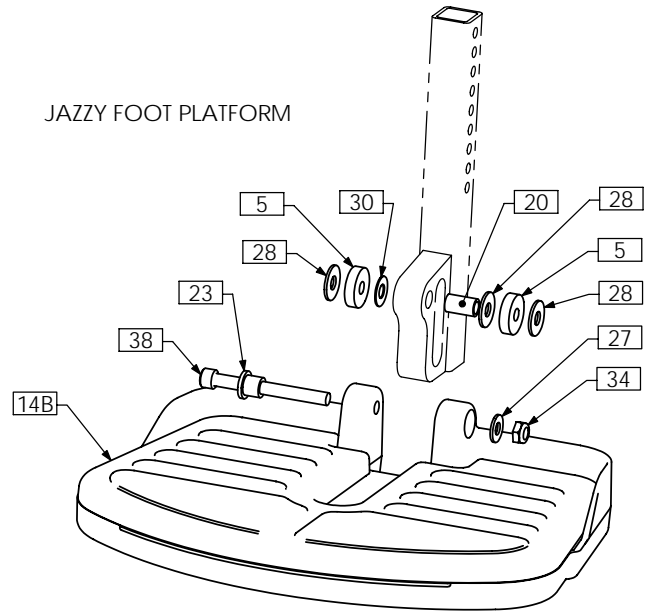
TRC0314 - PIVOT PLUS CENTER, FOOT PLATFORM ASS'Y



TRX FOOT PLATFORM



JAZZY FOOT PLATFORM



TRC0314 - PIVOT PLUS CENTER FOOT PLATFORM ASS'Y

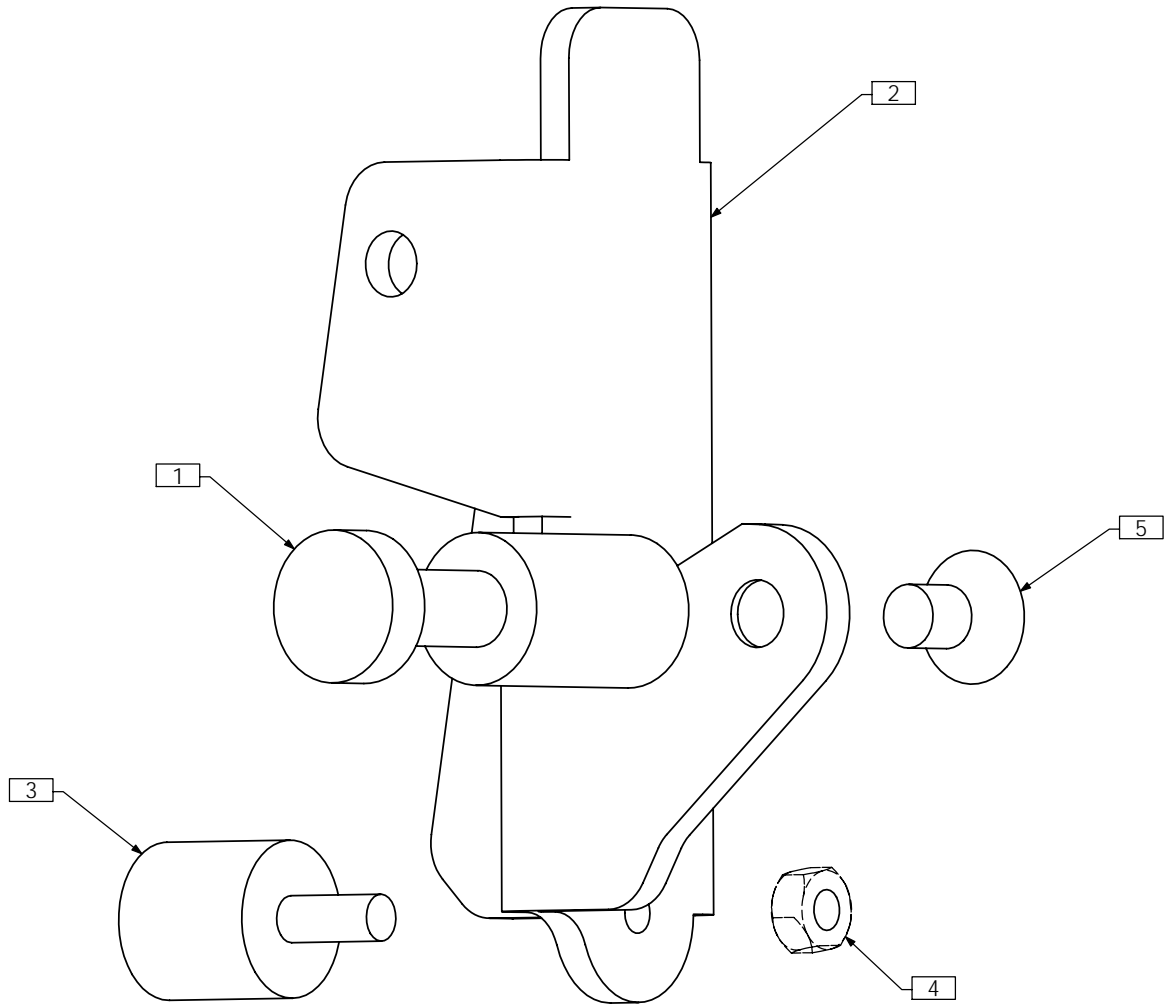
ITEM NO.	QTY.	PART NO.	DESCRIPTION
1	1	TRC0317	PUSH PLATE ASS'Y, RIGHT
2	1	TRC0318	PUSH PLATE ASS'Y, LEFT
3	1	TRX0696	PIVOT BLOCK, RIGHT
4	2	TRX0697	PIN
5	2	TRX0794	SPACER
6A	1	TRX1344-02	CENTER BRACKET WLD
6B N/S	1	TRX1344-01	CENTER BRACKET WLD
7	1	TRX1351	DOWN TUBE WLD
8	1	TRX1370	LEFT PIVOT TUBE ASS'Y
9	1	TRX1372	RIGHT PIVOT TUBE ASS'Y
10	1	TRX1395	PIVOT BLOCK, LEFT
11	2	TRX1758	CALF PAD MOUNT WLD
12	1	TRX1759	PIVOT SHAFT
13	1	TRM0107	SQUARE TUBE CAP
14A	1	TRC0571	CENTER FOOTPLATE ASS'Y
14B	1	TRM0235	JAZZY FOOT PLATFORM WITH MAT
14C N/S	1	TRM0354	M71 FOOT PLATFORM WITH MAT
15 N/S	2	TRM0308	NEOPRENE SLEEVE
16	1	TRM0321	PIVOT PLUS LEG PAD, LEFT
17	1	TRM0322	PIVOT PLUS LEG PAD, RIGHT
18	2	TRM0337	PAD, MEDIUM
19	1	TRH0017	3/8"ID x 7/16"OD x 3/4" BRONZE BUSHING
20	1	TRH0018	5/16"ID x 7/16"OD x 3/4" BRONZE BUSHING
21	2	TRH0022	DOWEL PIN, STAINLESS STEEL
22	1	TRH0057	SPLIT PIN, .125 X .500
23	1	TRH0061	5/16"ID x 1/2"OD x 1/2" FLANGED BRONZE BUSHING
24	4	TRH0101	1/4" FLAT WASHER
25	2	TRH0104	3/8" FLAT WASHER
26	6	TRH0105	3/8" NYLON WASHER
27	1	TRH0107	5/16" FLAT WASHER
28	15	TRH0109	5/16" NYLON WASHER
29	4	TRH0113	1/4" HI COLLAR LOCK WASHER
30	1	TRH0132	0.35"ID x 3/4"OD x 0.032" NYLON WASHER
31	2	TRH0201	1/4"-20 NYLOC NUT
32	1	TRH0204	3/8"-16 NYLOC NUT
33	2	TRH0206	5/16"-18 NYLOC NUT
34	5	TRH0207	5/16"-18 SHALLOW NYLOC NUT
35	2	TRH0212	5/16"-18 HEX NUT
36	4	TRH0230	5/16"-24 SHALLOW NYLOC NUT
37	2	TRH0321	5/16-18 x 1 3/4" BUTTON SOCKET CAP SCREW
38	1	TRH0330	5/16-18 x 3" SOCKET HEAD CAP SCREW GR8
39	2	TRH0393	5/16-18 x 1 1/4" BUTTON SOCKET CAP SCREW
40	1	TRH0402	3/8-16 x 2 1/2" SOCKET HEAD CAP SCREW GR8
41	2	TRH0421	5/16-18 x 3/4" BUTTON SOCKET CAP SCREW
42	2	TRH0423	1/4-20 X 1 3/4" BUTTON SOCKET CAP SCREW
43	4	TRH0459	1/4-20 x 1/2" SOCKET HEAD CAP SCREW GR8
44	4	TRH0491	5/16-24 x 1-5/8" FLAT SOCKET CAP SCREW

NOTES:

1. N/S = NOT SHOWN

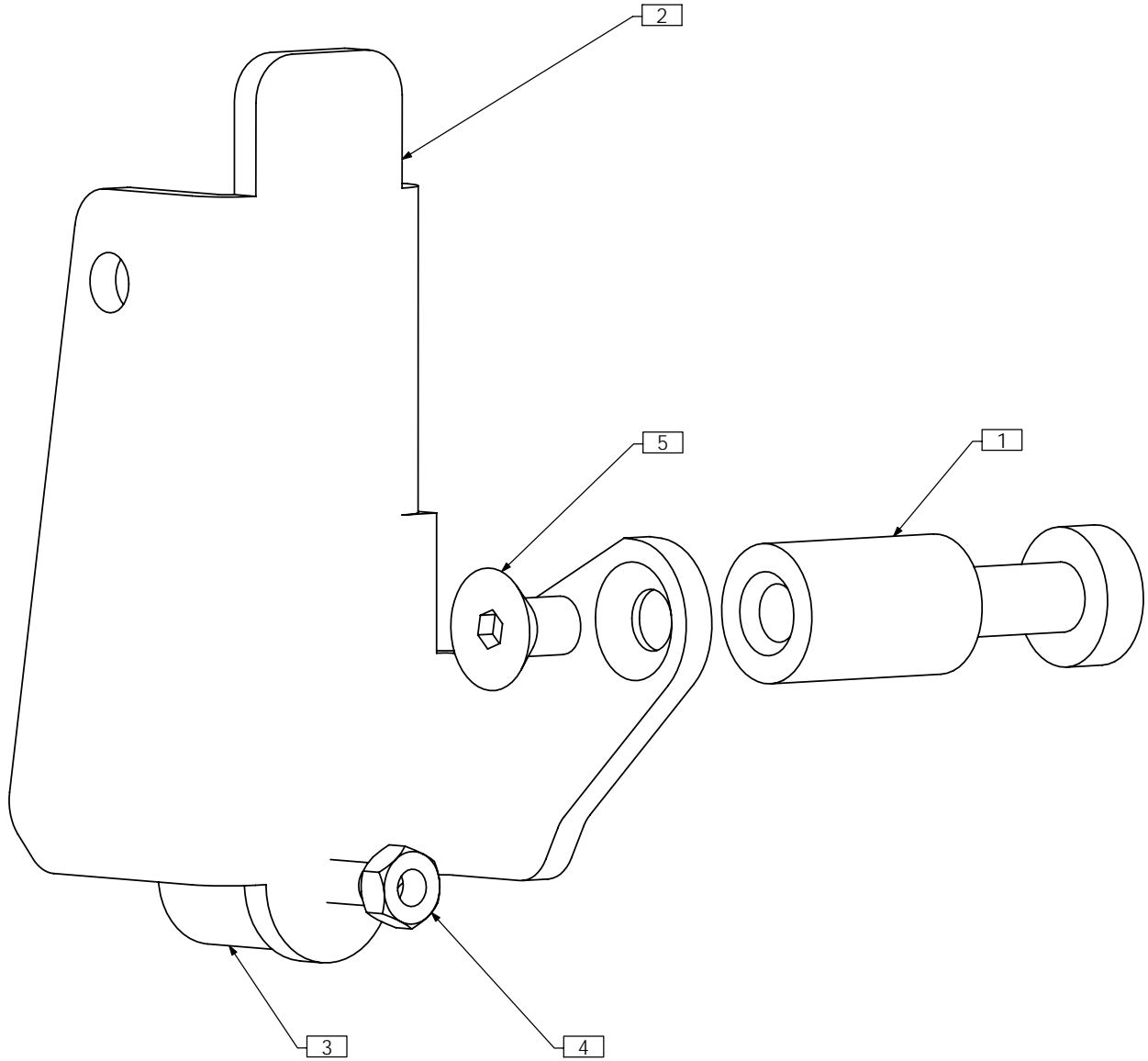
2. FOR 16", 17", 18", USE TRX1344-01. FOR 19", 20", 21", USE TRX1344-02 (SHOWN)

TRC0317 - PUSH PLATE ASS'Y, RIGHT, PIVOT PLUS CENTER



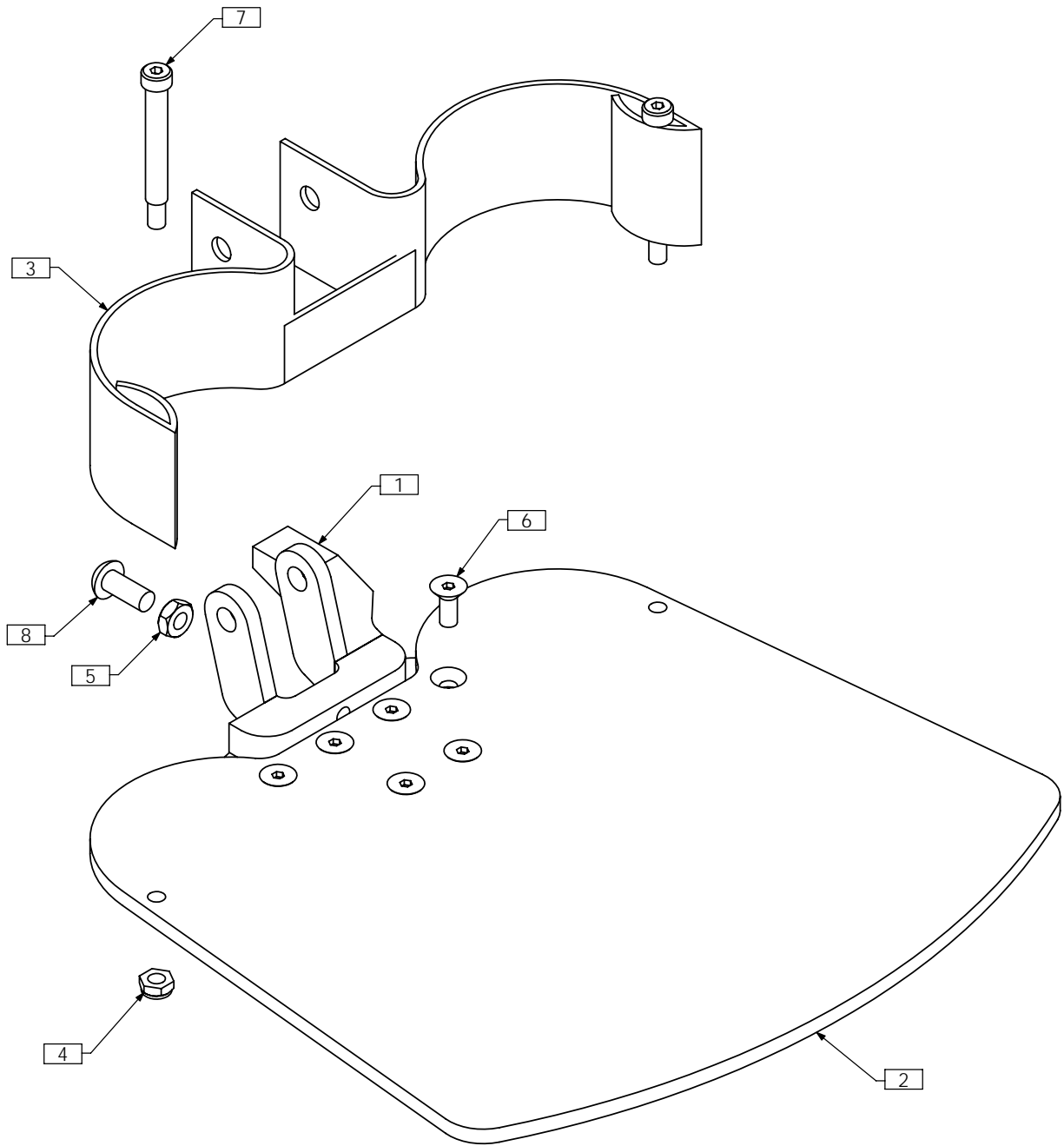
ITEM NO.	QTY.	PART NO.	DESCRIPTION
1	1	TRX0766	PUSH PIN
2	1	TRX1348	PUSH PLATE RIGHT
3	1	TRH0020	RUBBER BUMPER M6 X 15
4	1	TRH0221	M6 HEX NUT
5	1	TRH0456	5/16-18 x 1/2" FLAT SOCKET CAP SCREW

TRC0318 - PUSH PLATE ASS'Y, LEFT, PIVOT PLUS CENTER



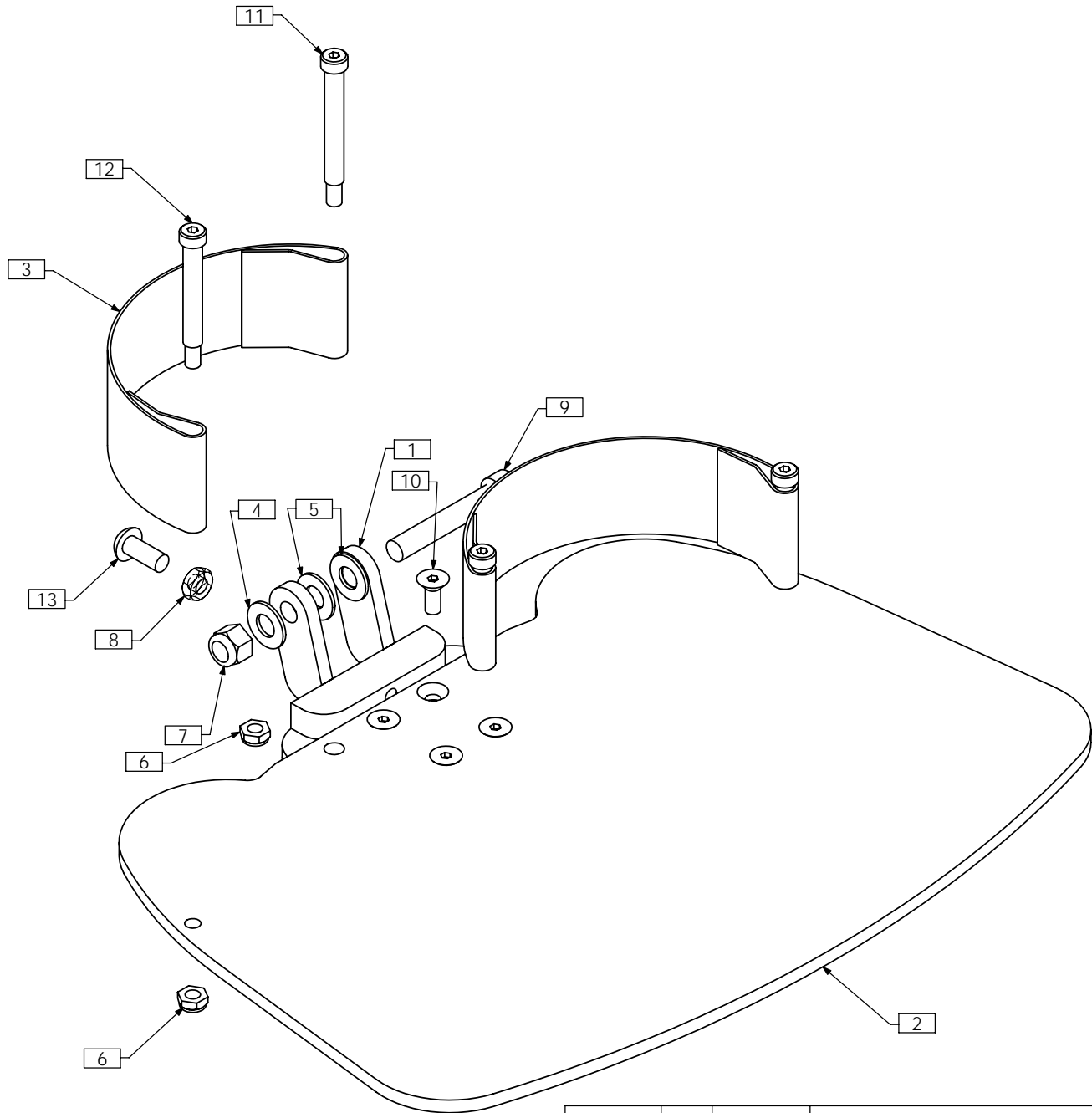
ITEM NO.	QTY.	PART NO.	DESCRIPTION
1	1	TRX0766	PUSH PIN
2	1	TRX1382	PUSH PLATE LEFT
3	1	TRH0020	RUBBER BUMPER M6 X 15
4	1	TRH0221	M6 HEX NUT
5	1	TRH0456	5/16-18 x 1/2" FLAT SOCKET CAP SCREW

TRC0571 - CENTER FOOTPLATE ASS'Y, STANDARD



ITEM NO.	QTY.	PART NO.	DESCRIPTION
1	1	TRX2524	FOOTPLATE PIVOT WLD
2	1	TRX3126	ALUMINUM FOOTPLATE
3	1	TRM0537	HEEL STRAP
4	2	TRH0202	1/4-20 SHALLOW NYLOC NUT
5	1	TRH0236	5/16-18 SHALLOW HEX JAM NUT
6	6	TRH0349	1/4-20 x 5/8" FLAT SOCKET CAP SCREW
7	2	TRH0410	5/16 x 2" SOCKET HEAD SHOULDER BOLT
8	1	TRH0421	5/16-18 x 3/4" BUTTON SOCKET CAP SCREW

TRC0518 - CENTER FOOTPLATE ASS'Y, BARIATRIC



ITEM NO.	QTY.	PART NO.	DESCRIPTION
1	1	TRX2095	PIVOT PLATE WLD
2	1	TRX2759	FLIP UP FOOTPLATE, BARIATRIC
3	2	TRM0241	HEEL STRAP
4	1	TRH0104	3/8" FLAT WASHER
5	2	TRH0105	3/8" NYLON WASHER
6	4	TRH0202	1/4-20 SHALLOW NYLOC NUT
7	1	TRH0204	3/8-16 NYLOC NUT
8	1	TRH0236	5/16-18 SHALLOW HEX JAM NUT
9	1	TRH0348	3/8-16 x 2 1/4" SOCKET HEAD CAP SCREW GR8
10	4	TRH0349	1/4-20 x 5/8" FLAT SOCKET CAP SCREW
11	2	TRH0378	5/16 x 2 1/4" SOCKET HEAD SHOULDER BOLT
12	2	TRH0410	5/16 x 2" SOCKET HEAD SHOULDER BOLT
13	1	TRH0421	5/16-18 x 3/4" BUTTON SOCKET CAP SCREW