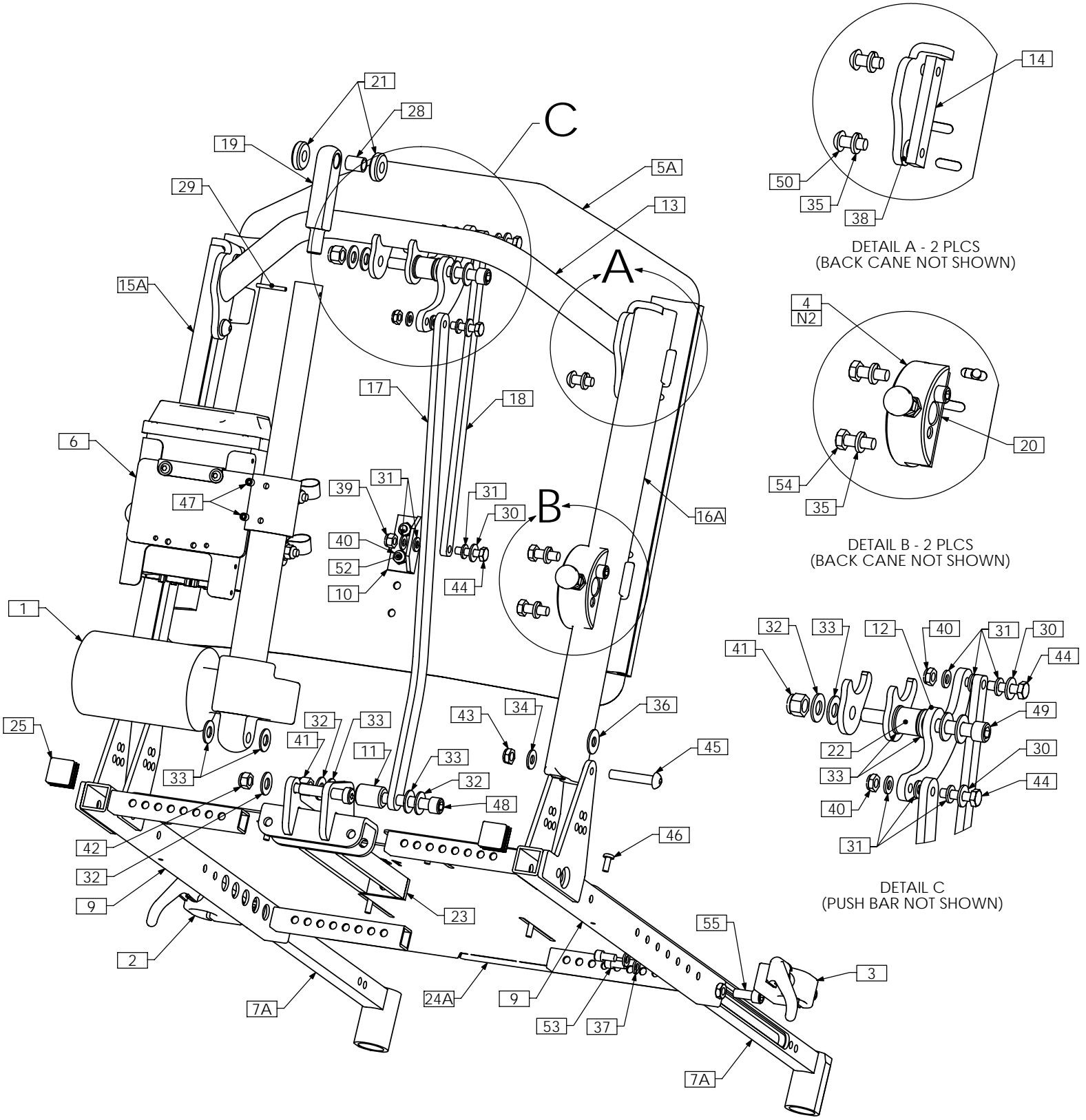


UPPER SEATING
WITH RECLINE
&
EXTENDED
SHEAR REDUCTION



TRC0531 - UPPER SEAT ASS'Y, RECLINE AND ESR, ULTRA LOW, ADJUSTABLE SEAT DEPTH



SEAT PANS OF SIZE 19W X 21D AND LARGER WILL REQUIRE THE SEAT DEPTH EXTENSION KIT - TRC0313

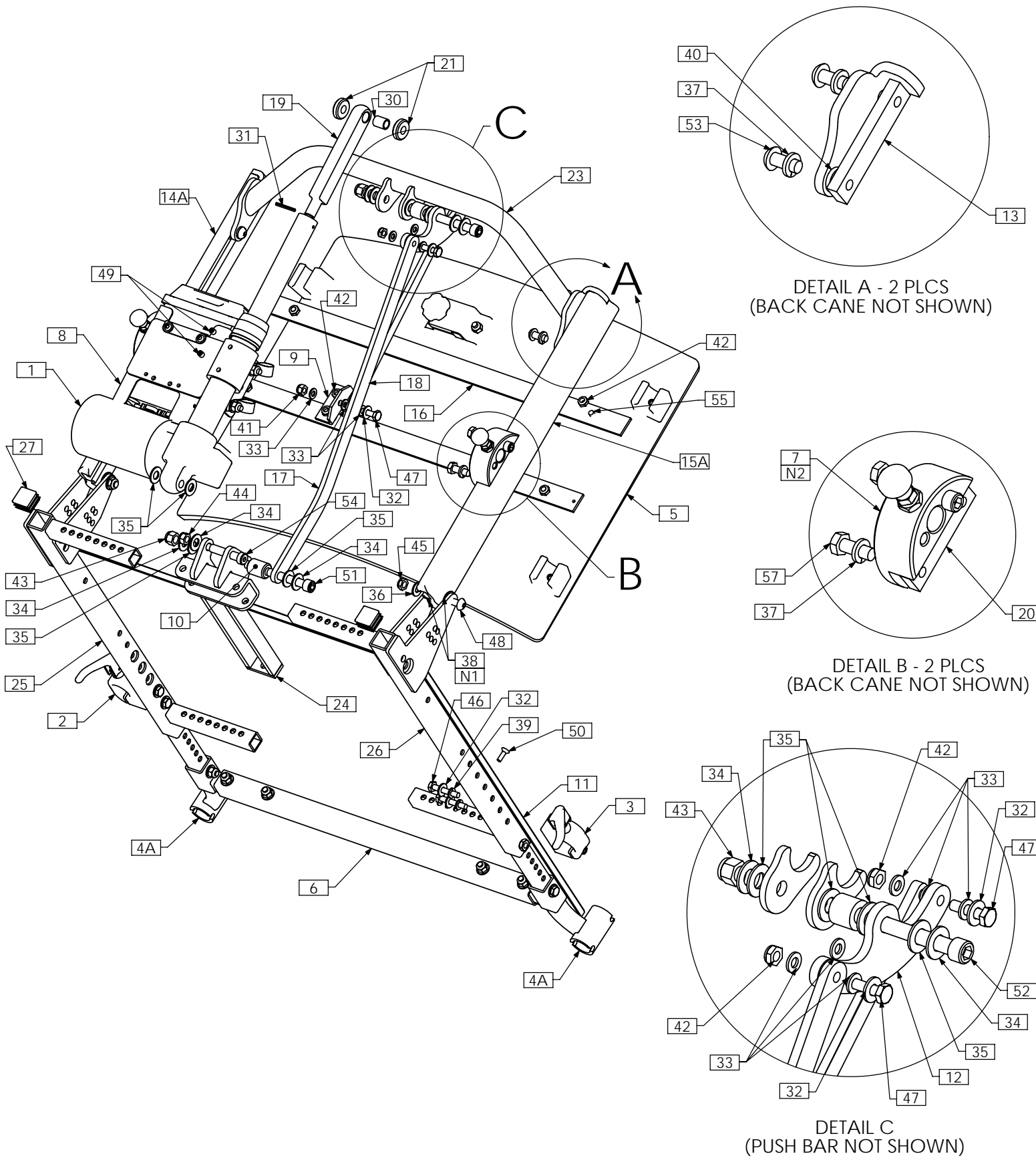
TRC0531 - UPPER SEAT ASS'Y, RECLINE AND ESR, ULTRA LOW, ADJUSTABLE SEAT DEPTH

ITEM NO.	QTY.	PART NO.	DESCRIPTION
1	1	TRA0489	ACTUATOR, 5" STROKE
2	1	TRC0243	FRONT ARMREST RECEIVER ASS'Y, LEFT
3	1	TRC0244	FRONT ARMREST RECEIVER ASS'Y, RIGHT
4	2	TRC0329	REAR ARMREST RECEIVER ASS'Y
5A	1	TRC0491	CURVED RIGID BACK, RECLINE AND ESR
5B N/S	1	TRC0339	RECESSED PLANAR BACK, RECLINE AND ESR
5C N/S	1	TRC0340	CONTOUR BACK, RECLINE AND ESR
6	1	TRC0524	RELAY BOX MOUNT ASS'Y
7A	1	TRC0535	LEGREST RECEIVER SELECTION
7B N/S	1	TRC0552	CENTER MOUNT LEGREST RECEIVER SELECTION
8 N/S	1	TRC0313	SEAT DEPTH EXTENSION KIT
9	1	TRC0607	ADJUSTABLE DEPTH SEAT SIDE FRAME SELECTION
10	1	TRX0194	ESR BRACKET, BACK PAN
11	1	TRX0332	SPACER
12	1	TRX0613	PIVOT PLATE
13	1	TRX0640	PUSH BAR ASS'Y
14	2	TRX0679	CLAMPING BAR
15A	1	TRX0709	EXTRUDED BACK CANE ASS'Y, 19"-22", LEFT
15B N/S	1	TRX0711	EXTRUDED BACK CANE ASS'Y, 23"-27", LEFT
16A	1	TRX0710	EXTRUDED BACK CANE ASS'Y, 19"-22", RIGHT
16B N/S	1	TRX0712	EXTRUDED BACK CANE ASS'Y, 23" - 27", RIGHT
17	1	TRX0716	ESR ANGLED LINK
18	1	TRX0717	ESR BACK PAN LINK
19	1	TRX1148-388	ROD END
20	2	TRX1561	CLAMPING BAR
21	2	TRX1669-0290	SPACER, 3/8 X 1
22	1	TRX1850	SPACER
23	1	TRX3082	RECLINE BRACKET WLD
24A	1	TRX3262	SEAT PAN, 16DP - 19DP
24B N/S	1	TRX3261	SEAT PAN, 14DP - 17DP
24C N/S	1	TRX3357	SEAT PAN, 19DP - 22DP
25	2	TRM0107	SQUARE TUBE CAP
26 N/S	1	TRM0208	BACK FLAP, VARIOUS SIZES
27 N/S	1	TRM0215	RECLINE ACTUATOR SHROUD, HELIX
28	1	TRH0005	3/8"ID x 1/2"OD x 5/8" BRONZE BUSHING
29	1	TRH0034	SLOTTED SPRING, TENSION PIN 0.125 x 1.125
30	3	TRH0101	1/4" FLAT WASHER
31	9	TRH0102	1/4" NYLON WASHER
32	5	TRH0104	3/8" FLAT WASHER
33	8	TRH0105	3/8" NYLON WASHER
34	2	TRH0107	5/16" FLAT WASHER
35	8	TRH0108	5/16" LOCK WASHER
36	4	TRH0109	5/16" NYLON WASHER
37	4	TRH0115	1/4" LOCK WASHER
38	2	TRH0124	5/16" x 5/8"OD x 0.120" TH FLAT WASHER
39	1	TRH0201	1/4-20 NYLOC NUT
40	4	TRH0202	1/4-20 SHALLOW NYLOC NUT
41	2	TRH0204	3/8-16 NYLOC NUT
42	1	TRH0206	5/16-18 NYLOC NUT
43	2	TRH0207	5/16-18 SHALLOW NYLOC NUT
44	3	TRH0303	1/4-20 x 1" HEX HEAD CAP SCREW
45	2	TRH0321	5/16-18 x 1 3/4" BUTTON SOCKET CAP SCREW
46	6	TRH0325	#10-32 x 1/2" PHILLIPS TRUSS MACHINE SCREW
47	2	TRH0336	SET SCREW, 0.25 x 0.25
48	1	TRH0348	3/8-16 x 2 1/4" SOCKET HEAD CAP SCREW GR8
49	1	TRH0387	3/8-16 x 3 1/2" SOCKET HEAD CAP SCREW GR8
50	4	TRH0421	5/16-18 x 3/4" BUTTON SOCKET CAP SCREW
51	1	TRH0443	3/8 x 1 3/4" SOCKET HEAD SHOULDER BOLT
52	2	TRH0454	1/4-20 x 1/2" PHILLIPS TRUSS MACHINE SCREW
53	4	TRH0459	1/4-20 x 1/2" SOCKET HEAD CAP SCREW GR8
54	4	TRH0507	5/16-18 x 7/8" HEX HEAD CAP SCREW
55	2	TRH0517	5/16-24 x 3/4" SOCKET HEAD CAP SCREW GR8

NOTES:

1. N/S = NOT SHOWN
2. SEE TRC0329 FOR EXTENDED REAR RECEIVER ASS'Y USED WITH LATERALS

TRC0593 - UPPER SEAT ASS'Y, RECLINE AND ESR, ULTRA LOW CGT, BARIATRIC

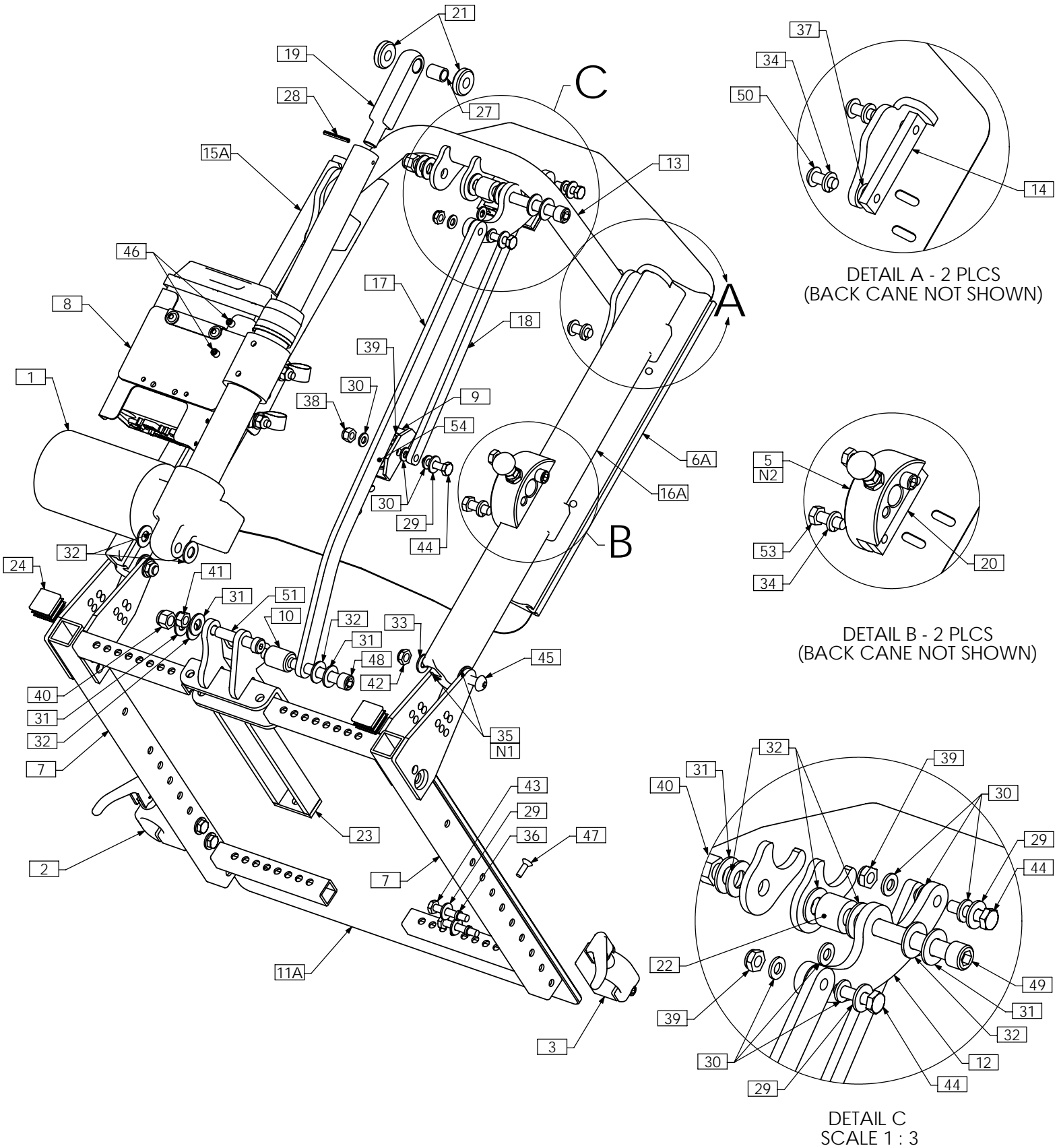


TRC0593 - UPPER SEAT ASS'Y, RECLINE AND ESR, ULTRA LOW CGT, BARIATRIC

ITEM NO.	QTY.	PART NO.	DESCRIPTION
1	1	TRX1144	EXTENDED HANGER ASS'Y
2	1	TRX1145	EXTENDED HANGER ASS'Y
1	1	TRA0660	ACTUATOR, 4" STROKE
2	1	TRC0243	FRONT ARMREST RECEIVER ASS'Y, LEFT
3	1	TRC0244	FRONT ARMREST RECEIVER ASS'Y, RIGHT
4A	1	TRC0294	LEGREST RECEIVER SELECTION
4B N/S	1	TRC0551	CENTER MOUNT LEGREST RECEIVER SELECTION
5	1	TRC0338	CURVED RIGID BACK, RECLINE AND ESR
6	1	TRC0313	SEAT DEPTH EXTENSION KIT
7	2	TRC0329	REAR ARMREST RECEIVER ASS'Y
8	1	TRC0524	RELAY BOX MOUNT ASS'Y
9	1	TRX0194	ESR BRACKET, BACK PAN
10	1	TRX0332	SPACER
11	1	TRX0394	SEAT PAN, 19"-25" WIDTHS
12	1	TRX0613	PIVOT PLATE
13	2	TRX0679	CLAMPING BAR
14A	1	TRX0709	EXTRUDED BACK CANE ASS'Y, 19"-22", LEFT
14B N/S	1	TRX0711	EXTRUDED BACK CANE ASS'Y, 23"-27", LEFT
15A	1	TRX0710	EXTRUDED BACK CANE ASS'Y, 19"-22", RIGHT
15B N/S	1	TRX0712	EXTRUDED BACK CANE ASS'Y, 23" - 27", RIGHT
16	1	TRX0716	ESR ANGLED LINK
17	1	TRX0717	ESR BACK PAN LINK
18	2	TRX0722	REINFORCING STRIP, BACK PAN
19	1	TRX1148-600	ROD END
20	2	TRX1561	CLAMPING BAR
21	2	TRX1669-0290	SPACER, 3/8 X 1
22	1	TRX1850	SPACER
23	1	TRX2842	PUSH BAR WLD
24	1	TRX3082	RECLINE BRACKET WLD
25	1	TRX3285	SEAT SIDE WLD, LEFT
26	1	TRX3286	SEAT SIDE WLD, RIGHT
27	2	TRM0107	SQUARE TUBE CAP
28 N/S	1	TRM0208	BACK FLAP, VARIOUS SIZES
29 N/S	1	TRM0215	RECLINE ACTUATOR SHROUD, HELIX
30	1	TRH0005	BUSHING 0.375 I.D X 0.500 O.D X 0.625 LG
31	1	TRH0034	SLOTTED SPRING, TENSION PIN 0.125 x 1.125
32	7	TRH0101	¼" FLAT WASHER
33	9	TRH0102	¼" NYLON WASHER
34	5	TRH0104	3/8" FLAT WASHER
35	8	TRH0105	3/8" NYLON WASHER
36	2	TRH0107	5/16" FLAT WASHER
37	8	TRH0108	5/16" LOCK WASHER
38	4	TRH0109	5/16" NYLON WASHER
39	4	TRH0115	¼" LOCK WASHER
40	2	TRH0124	5/16" x 5/8"OD x 0.120" TH FLAT WASHER
41	1	TRH0201	¼-20 NYLOC NUT
42	8	TRH0202	¼-20 SHALLOW NYLOC NUT
43	2	TRH0204	3/8-16 NYLOC NUT
44	1	TRH0206	5/16-18 NYLOC NUT
45	2	TRH0207	5/16-18 SHALLOW NYLOC NUT
46	4	TRH0301	¼-20 x 1½" HEX HEAD CAP SCREW
47	3	TRH0303	¼-20 x 1" HEX HEAD CAP SCREW
48	2	TRH0321	5/16-18 x 1¼" BUTTON SOCKET CAP SCREW
49	2	TRH0336	SET SCREW, 0.25 x 0.25
50	4	TRH0339	#10-32 x 5/8" FLAT SOCKET CAP SCREW
51	1	TRH0348	3/8-16 x 2¼" SOCKET HEAD CAP SCREW GR8
52	1	TRH0387	3/8-16 x 3½" SOCKET HEAD CAP SCREW GR8
53	4	TRH0421	5/16-18 x ¾" BUTTON SOCKET CAP SCREW
54	1	TRH0443	3/8 x 1¼" SOCKET HEAD SHOULDER BOLT
55	4	TRH0445	¼-20 x ¾" BUTTON SOCKET CAP SCREW
56	2	TRH0454	¼-20 x ½" PHILLIPS TRUSS MACHINE SCREW
57	4	TRH0507	5/16-18 x 7/8" HEX HEAD CAP SCREW

NOTES:
1. N/S = NOT SHOWN
2. SEE TRC0329 FOR EXTENDED REAR RECEIVER ASS'Y USED WITH LATERALS

TRC0371 - UPPER SEAT ASS'Y, RECLINE AND ESR, LOW-PRO CGT



NOTE: THIS ASSEMBLY DRAWING CAN BE USED AS A REFERENCE FOR STANDARD AND MEDIUM DEPTH APPLICATION RECLINE AND ESR UPPER SEAT ASSEMBLIES. SPECIAL PIVOT/MAXIMUM RECLINE AND LOW BACK SEAT SIDE FRAMES ARE NOT USED FOR LOW-PRO APPLICATIONS. REFER TO TRC0407 - SEAT SIDE SELECTION PAGE OF PARTS MANUAL

TRC0371 - UPPER SEAT ASS'Y, RECLINE AND ESR, LOW-PRO CGT

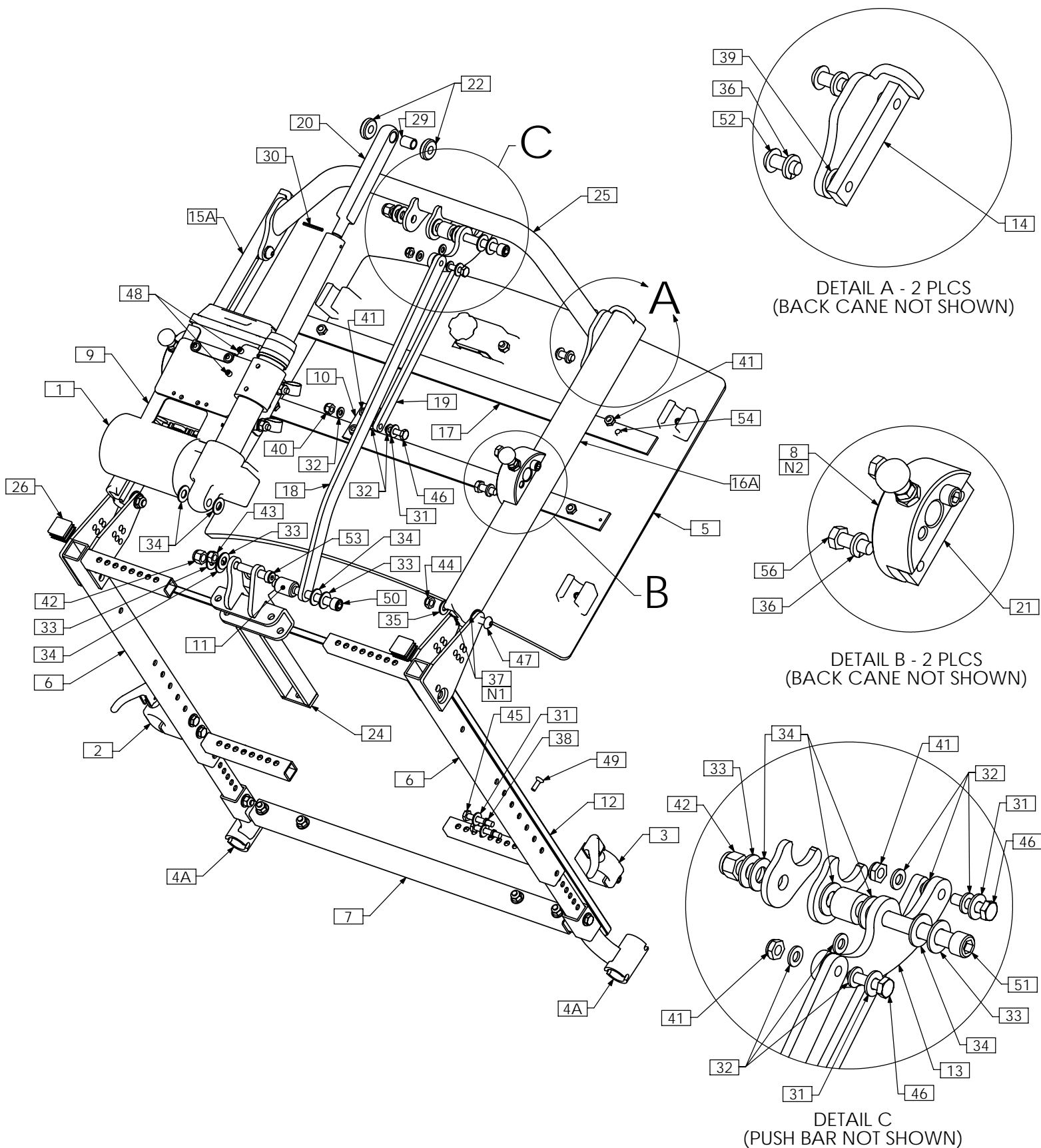
ITEM NO.	QTY.	PART NO.	DESCRIPTION
1	1	TRA0489	ACTUATOR, 5" STROKE
2	1	TRC0243	FRONT ARMREST RECEIVER ASS'Y, LEFT
3	1	TRC0244	FRONT ARMREST RECEIVER ASS'Y, RIGHT
4A N/S	1	TRC0294	LEGREST RECEIVER SELECTION
4B N/S	1	TRC0551	CENTER MOUNT LEGREST RECEIVER SELECTION
5	2	TRC0329	REAR ARMREST RECEIVER ASS'Y
6A	1	TRC0491	CURVED RIGID BACK, RECLINE AND ESR
6B N/S	1	TRC0339	RECESSED PLANAR BACK, RECLINE AND ESR
6C N/S	1	TRC0340	CONTOUR BACK, RECLINE AND ESR
7	1	TRC0407	SEAT SIDE FRAME SELECTION
8	1	TRC0524	RELAY BOX MOUNT ASS'Y
9	1	TRX0194	ESR BRACKET, BACK PAN
10	1	TRX0332	SPACER
11A	1	TRX0393	SEAT PAN 14"-18" WIDTHS
11B N/S	1	TRX0394	SEAT PAN, 19"-25" WIDTHS
12	1	TRX0613	PIVOT PLATE
13	1	TRX0640	PUSH BAR ASS'Y
14	2	TRX0679	CLAMPING BAR
15A	1	TRX0709	EXTRUDED BACK CANE ASS'Y, 19"-22", LEFT
15B N/S	1	TRX0711	EXTRUDED BACK CANE ASS'Y, 23"-27", LEFT
16A	1	TRX0710	EXTRUDED BACK CANE ASS'Y, 19"-22", RIGHT
16B N/S	1	TRX0712	EXTRUDED BACK CANE ASS'Y, 23" - 27", RIGHT
17	1	TRX0716	ESR ANGLED LINK
18	1	TRX0717	ESR BACK PAN LINK
19	1	TRX1148-388	ROD END
20	2	TRX1561	CLAMPING BAR
21	2	TRX1669-0290	SPACER, 3/8 X 1
22	1	TRX1850	SPACER
23	1	TRX2154	RECLINE BRACKET WLD
24	2	TRM0107	SQUARE TUBE CAP
25 N/S	1	TRM0208	BACK FLAP, VARIOUS SIZES
26 N/S	1	TRM0215	RECLINE ACTUATOR SHROUD, HELIX
27	1	TRH0005	BUSHING 0.375 I.D X 0.500 O.D X 0.625 LG
28	1	TRH0034	SLOTTED SPRING, TENSION PIN 0.125 x 1.125
29	7	TRH0101	¼" FLAT WASHER
30	9	TRH0102	¼" NYLON WASHER
31	5	TRH0104	3/8" FLAT WASHER
32	8	TRH0105	3/8" NYLON WASHER
33	2	TRH0107	5/16" FLAT WASHER
34	8	TRH0108	5/16" LOCK WASHER
35	4	TRH0109	5/16" NYLON WASHER
36	4	TRH0113	¼" HI COLLAR LOCK WASHER
37	2	TRH0124	5/16" x 5/8"OD x 0.120" TH FLAT WASHER
38	1	TRH0201	¼-20 NYLOC NUT
39	4	TRH0202	¼-20 SHALLOW NYLOC NUT
40	2	TRH0204	3/8-16 NYLOC NUT
41	1	TRH0206	5/16-18 NYLOC NUT
42	2	TRH0207	5/16-18 SHALLOW NYLOC NUT
43	4	TRH0301	¼-20 x 1½" HEX HEAD CAP SCREW
44	3	TRH0303	¼-20 x 1" HEX HEAD CAP SCREW
45	2	TRH0321	5/16-18 x 1¾" BUTTON SOCKET CAP SCREW
46	2	TRH0336	SET SCREW, 0.25 x 0.25
47	4	TRH0339	#10-32 x 5/8" FLAT SOCKET CAP SCREW
48	1	TRH0348	3/8-16 x 2¼" SOCKET HEAD CAP SCREW GR8
49	1	TRH0387	3/8-16 x 3½" SOCKET HEAD CAP SCREW GR8
50	4	TRH0421	5/16-18 x ¾" BUTTON SOCKET CAP SCREW
51	1	TRH0443	3/8 x 1¾" SOCKET HEAD SHOULDER BOLT
52	2	TRH0454	¼-20 x ½" PHILLIPS TRUSS MACHINE SCREW
53	4	TRH0507	5/16-18 x 7/8" HEX HEAD CAP SCREW

NOTES:

1. N/S = NOT SHOWN

2. SEE TRC0329 FOR EXTENDED REAR RECEIVER ASS'Y USED ON LATERALS

TRC0358 - UPPER SEAT ASS'Y, RECLINE AND ESR, LOW-PRO CGT, BARIATRIC



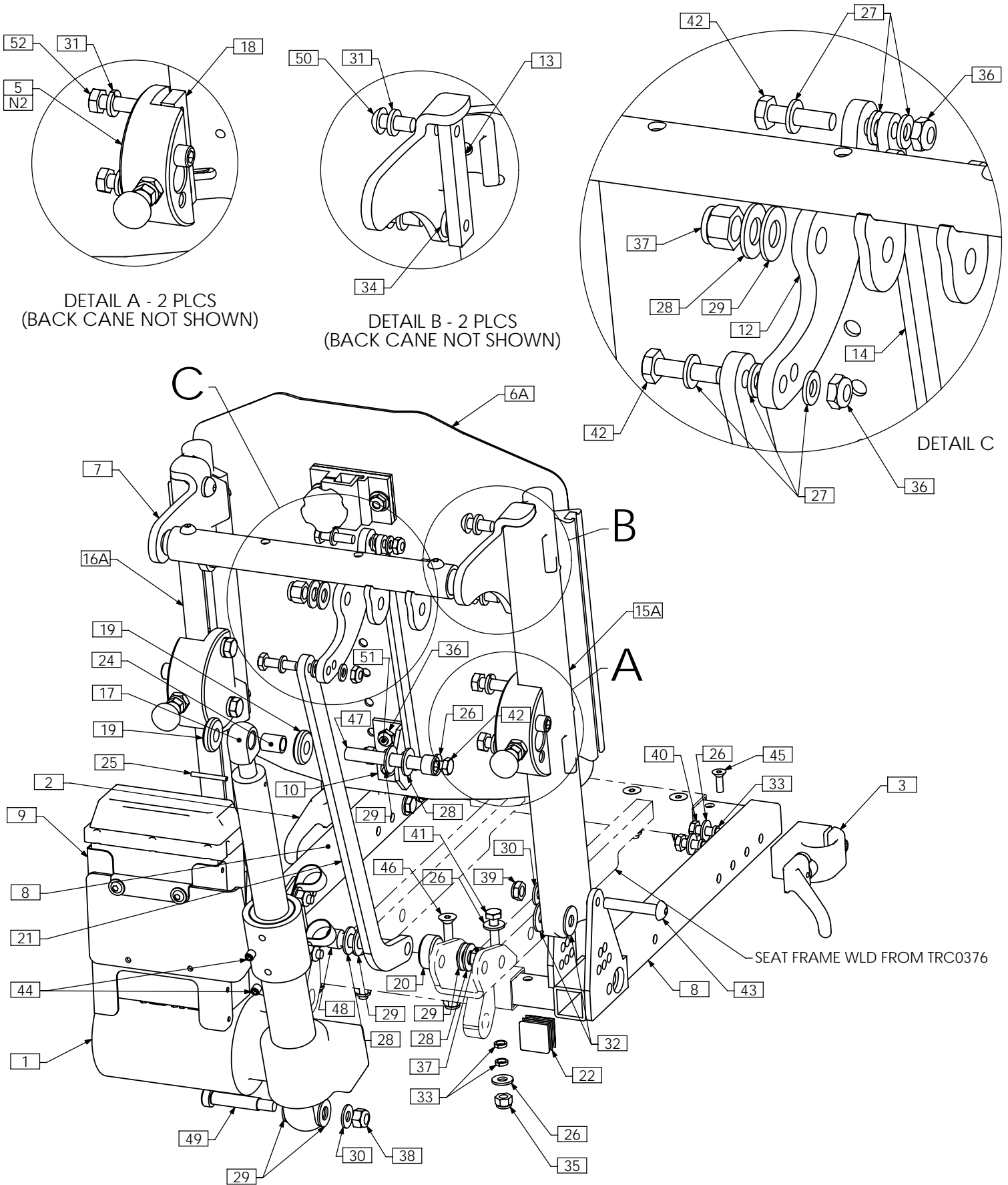
NOTES: THIS ASSEMBLY DRAWING CAN BE USED AS A REFERENCE FOR ALL DEPTH APPLICATION RECLINE-ONLY UPPER SEAT BARIATRIC ASSEMBLIES. REFER TO TRC0407 - SEAT SIDE SELECTION PAGE OF PARTS MANUAL.

TRC0358 - UPPER SEAT ASS'Y, RECLINE AND ESR, LOW-PRO CGT, BARIATRIC

ITEM NO.	QTY.	PART NO.	DESCRIPTION
1	1	TRX1144	EXTENDED HANGER ASS'Y
2	1	TRX1145	EXTENDED HANGER ASS'Y
3	1	TRX1654	SIDE SEAT WLD, LEFT
4	1	TRX1655	SIDE SEAT WLD, RIGHT
1	1	TRA0660	ACTUATOR, 4" STROKE
2	1	TRC0243	FRONT ARMREST RECEIVER ASSY, LEFT
3	1	TRC0244	FRONT ARMREST RECEIVER ASSY, RIGHT
4A	1	TRC0294	LEGREST RECEIVER SELECTION
4B N/S	1	TRC0551	CENTER MOUNT LEGREST RECEIVER SELECTION
5	1	TRC0338	CURVED RIGID BACK, RECLINE AND ESR
6	1	TRC0407	SEAT SIDE FRAME SELECTION
7	1	TRC0313	SEAT DEPTH EXTENSION KIT
8	2	TRC0329	REAR ARMREST RECEIVER ASS'Y
9	1	TRC0524	RELAY BOX MOUNT ASS'Y
10	1	TRX0194	ESR BRACKET, BACK PAN
11	1	TRX0332	SPACER
12	1	TRX0394	SEAT PAN, 19"-25" WIDTHS
13	1	TRX0613	PIVOT PLATE
14	2	TRX0679	CLAMPING BAR
15A	1	TRX0709	EXTRUDED BACK CANE ASS'Y, 19"-22", LEFT
15B N/S	1	TRX0711	EXTRUDED BACK CANE ASS'Y, 23"-27", LEFT
16A	1	TRX0710	EXTRUDED BACK CANE ASS'Y, 19"-22", RIGHT
16B N/S	1	TRX0712	EXTRUDED BACK CANE ASS'Y, 23" - 27", RIGHT
17	1	TRX0716	ESR ANGLED LINK
18	1	TRX0717	ESR BACK PAN LINK
19	2	TRX0722	REINFORCING STRIP, BACK PAN
20	1	TRX1148-600	ROD END
21	2	TRX1561	CLAMPING BAR
22	2	TRX1669-0290	SPACER, 3/8 X 1
23	1	TRX1850	SPACER
24	1	TRX2154	RECLINE BRACKET WLD
25	1	TRX2842	PUSH BAR WLD
26	2	TRM0107	SQUARE TUBE CAP
27 N/S	1	TRM0208	BACK FLAP, VARIOUS SIZES
28 N/S	1	TRM0215	RECLINE ACTUATOR SHROUD, HELIX
29	1	TRH0005	BUSHING 0.375 I.D X 0.500 O.D X 0.625 LG
30	1	TRH0034	SLOTTED SPRING, TENSION PIN 0.125 x 1.125
31	7	TRH0101	¼" FLAT WASHER
32	9	TRH0102	¼" NYLON WASHER
33	5	TRH0104	3/8" FLAT WASHER
34	8	TRH0105	3/8" NYLON WASHER
35	2	TRH0107	5/16" FLAT WASHER
36	8	TRH0108	5/16" LOCK WASHER
37	4	TRH0109	5/16" NYLON WASHER
38	4	TRH0113	¼" HI COLLAR LOCK WASHER
39	2	TRH0124	5/16" x 5/8"OD x 0.120" TH FLAT WASHER
40	1	TRH0201	¼-20 NYLOC NUT
41	8	TRH0202	¼-20 SHALLOW NYLOC NUT
42	2	TRH0204	3/8-16 NYLOC NUT
43	1	TRH0206	5/16-18 NYLOC NUT
44	2	TRH0207	5/16-18 SHALLOW NYLOC NUT
45	4	TRH0301	¼-20 x 1½" HEX HEAD CAP SCREW
46	3	TRH0303	¼-20 x 1" HEX HEAD CAP SCREW
47	2	TRH0321	5/16-18 x 1¾" BUTTON SOCKET CAP SCREW
48	2	TRH0336	SET SCREW, 0.25 x 0.25
49	4	TRH0339	#10-32 x 5/8" FLAT SOCKET CAP SCREW
50	1	TRH0348	3/8-16 x 2¼" SOCKET HEAD CAP SCREW GR8
51	1	TRH0387	3/8-16 x 3½" SOCKET HEAD CAP SCREW GR8
52	4	TRH0421	5/16-18 x ¾" BUTTON SOCKET CAP SCREW
53	1	TRH0443	3/8 x 1¾" SOCKET HEAD SHOULDER BOLT
54	4	TRH0445	¼-20 x ¾" BUTTON SOCKET CAP SCREW
55	2	TRH0454	¼-20 x ½" PHILLIPS TRUSS MACHINE SCREW
56	4	TRH0507	5/16-18 x 7/8" HEX HEAD CAP SCREW

NOTES:
1. N/S = NOT SHOWN
2. SEE TRC0329 FOR EXTENDED REAR RECEIVER ASS'Y USED WITH LATERALS

TRC0372 - UPPER SEAT ASS'Y, RECLINE AND ESR, LOW-PRO, PEDIATRIC



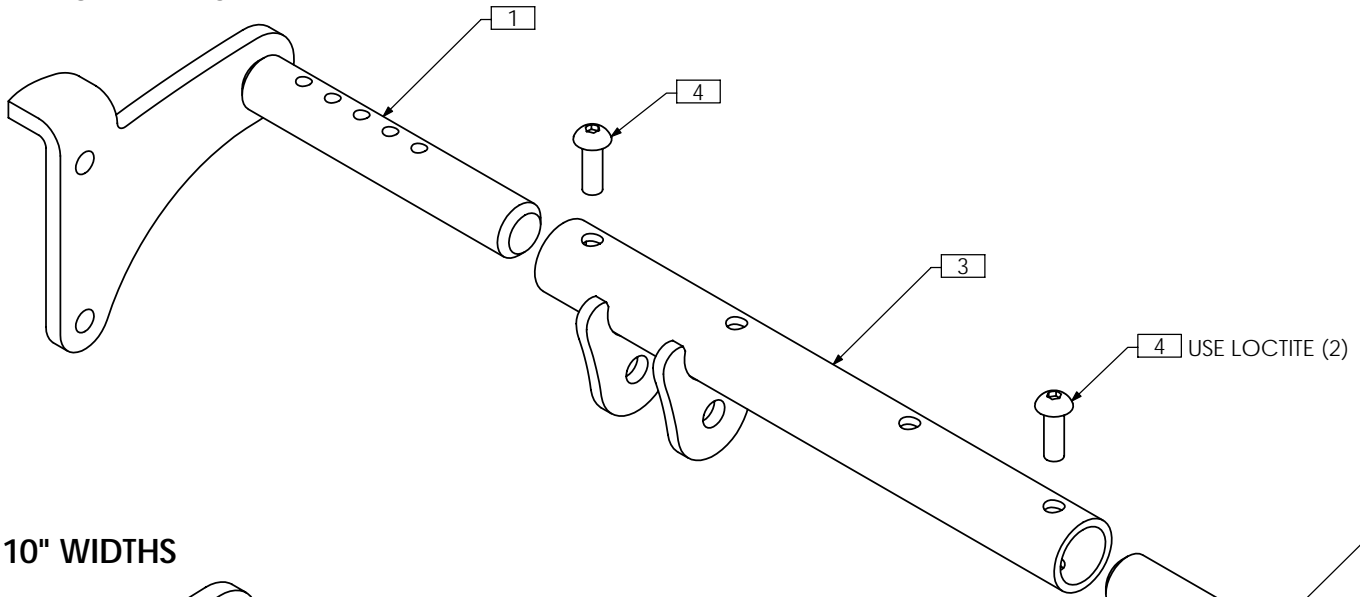
TRC0372 - UPPER SEAT ASS'Y, RECLINE AND ESR, LOW-PRO, PEDIATRIC

ITEM NO.	QTY.	PART NO.	DESCRIPTION
1	1	TRA0548	ACTUATOR, 3" STROKE
2	1	TRC0243	FRONT ARMREST RECEIVER ASS'Y, LEFT
3	1	TRC0244	FRONT ARMREST RECEIVER ASS'Y, RIGHT
4A N/S	1	TRC0294	LEGREST RECEIVER SELECTION
4B N/S	1	TRC0551	CENTER MOUNT LEGREST RECEIVER SELECTION
5	2	TRC0329	REAR ARMREST RECEIVER ASS'Y
6A	1	TRC0491	CURVED RIGID BACK, RECLINE AND ESR
6B N/S	1	TRC0339	RECESSED PLANAR BACK, RECLINE AND ESR
7	1	TRC0370	PUSH BAR ASS'Y
8	1	TRC0407	SEAT SIDE FRAME SELECTION
9	1	TRC0524	RELAY BOX MOUNT ASS'Y
10	1	TRX0194	ESR BRACKET, BACK PAN
11 N/S	1	TRX0393	SEAT PAN 14"-18" WIDTHS
12	1	TRX0613	PIVOT PLATE
13	2	TRX0679	CLAMPING BAR
14	1	TRX0994	BACK PAN LINK
15A	1	TRX1074	EXTRUDED BACK CANE ASS'Y, PEDIATRIC, RIGHT
15B N/S	1	TRX2757	EXTENDED BACK CANE ASSEMBLY, RIGHT
16A	1	TRX1075	EXTRUDED BACK CANE ASS'Y, PEDIATRIC, LEFT
16B N/S	1	TRX2755	EXTENDED BACK CANE ASSEMBLY, LEFT
17	1	TRX1148-200	ROD END
18	2	TRX1561	CLAMPING BAR
19	2	TRX1669-0237	SPACER, 3/8 X 1
20	1	TRX1669-0425	SPACER, 3/8 X 1
21	1	TRX1928	ESR LINK
22	2	TRM0107	SQUARE TUBE CAP
23 N/S	1	TRM0208	BACK FLAP, VARIOUS SIZES
24	1	TRH0005	3/8"ID x 1/2"OD x 5/8" BRONZE BUSHING
25	1	TRH0034	SLOTTED SPRING, TENSION PIN 0.125 x 1.125
26	14	TRH0101	1/4" FLAT WASHER
27	9	TRH0102	1/4" NYLON WASHER
28	4	TRH0104	3/8" FLAT WASHER
29	7	TRH0105	3/8" NYLON WASHER
30	3	TRH0107	5/16" FLAT WASHER
31	8	TRH0108	5/16" LOCK WASHER
32	4	TRH0109	5/16" NYLON WASHER
33	20	TRH0113	1/4" HI COLLAR LOCK WASHER
34	2	TRH0124	5/16" x 5/8"OD x 0.120" TH FLAT WASHER
35	9	TRH0201	1/4"-20 NYLOC NUT
36	4	TRH0202	1/4"-20 SHALLOW NYLOC NUT
37	2	TRH0204	3/8-16 NYLOC NUT
38	1	TRH0206	5/16-18 NYLOC NUT
39	2	TRH0207	5/16-18 SHALLOW NYLOC NUT
40	4	TRH0301	1/4"-20 x 1 1/2" HEX HEAD CAP SCREW
41	1	TRH0302	1/4"-20 x 1 3/4" HEX HEAD CAP SCREW
42	3	TRH0303	1/4"-20 x 1" HEX HEAD CAP SCREW
43	2	TRH0321	5/16-18 x 1 3/4" BUTTON SOCKET CAP SCREW
44	2	TRH0336	SET SCREW, 0.25 x 0.25
45	4	TRH0339	#10-32 x 5/8" FLAT SOCKET CAP SCREW
46	7	TRH0377	1/4"-20 x 1 1/2" FLAT SOCKET CAP SCREW
47	1	TRH0380	3/8-16 x 2 1/2" SOCKET HEAD CAP SCREW GR8
48	1	TRH0403	3/8-16 x 1 3/4" SOCKET HEAD CAP SCREW GR8
49	1	TRH0413	3/8 x 1 1/2" SOCKET HEAD SHOULDER BOLT
50	4	TRH0421	5/16-18 x 3/4" BUTTON SOCKET CAP SCREW
51	2	TRH0454	1/4"-20 x 1/2" PHILLIPS TRUSS MACHINE SCREW
52	4	TRH0507	5/16-18 x 7/8" HEX HEAD CAP SCREW

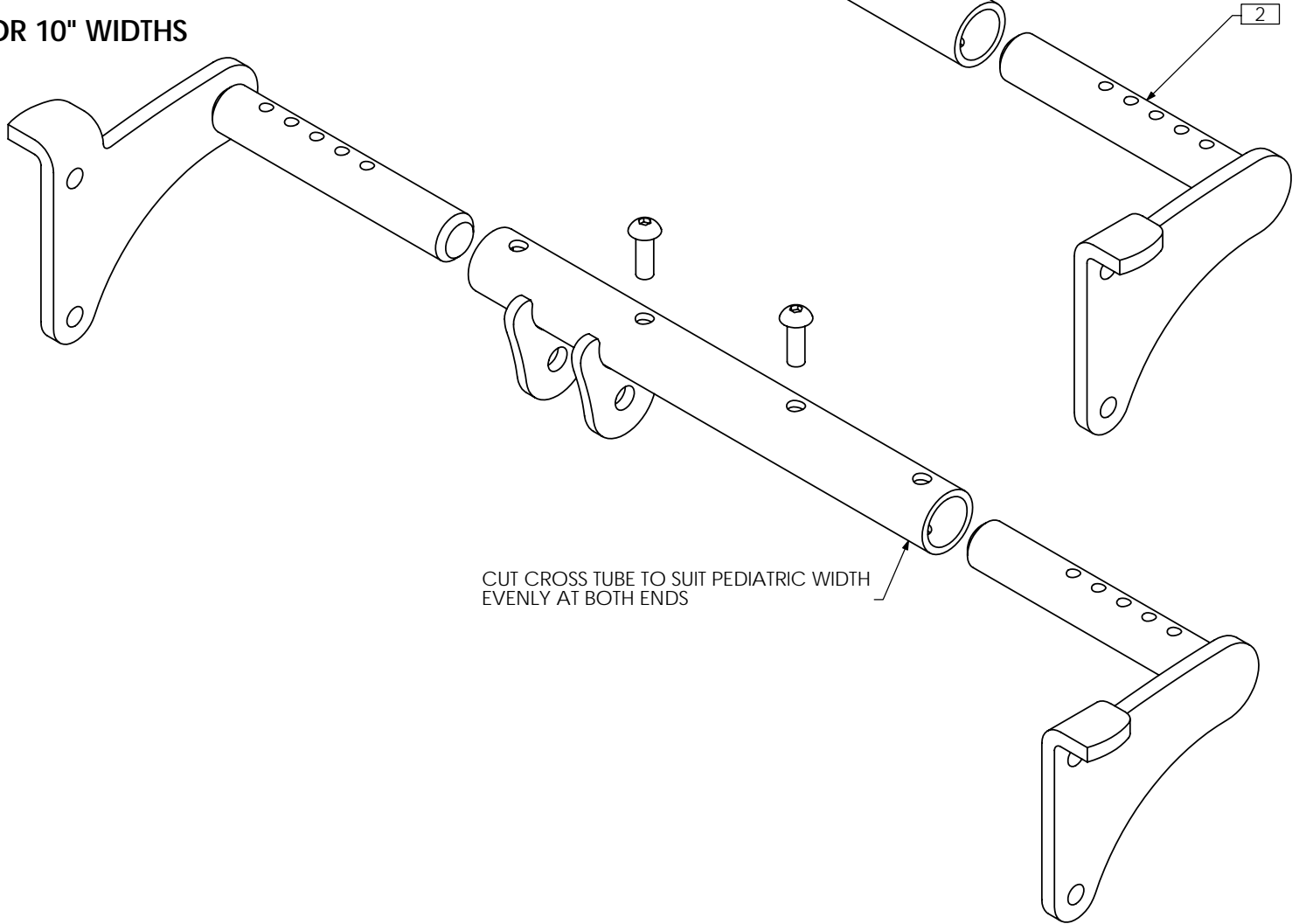
NOTES:
1. N/S = NOT SHOWN
2. SEE TRC0329 FOR EXTENDED REAR RECEIVER ASS'Y USED FOR LATERALS

TRC0370 - PUSH BAR ASS'Y, LOW-PRO, PEDIATRIC RECLINE

FOR 11"-15" WIDTHS



FOR 10" WIDTHS

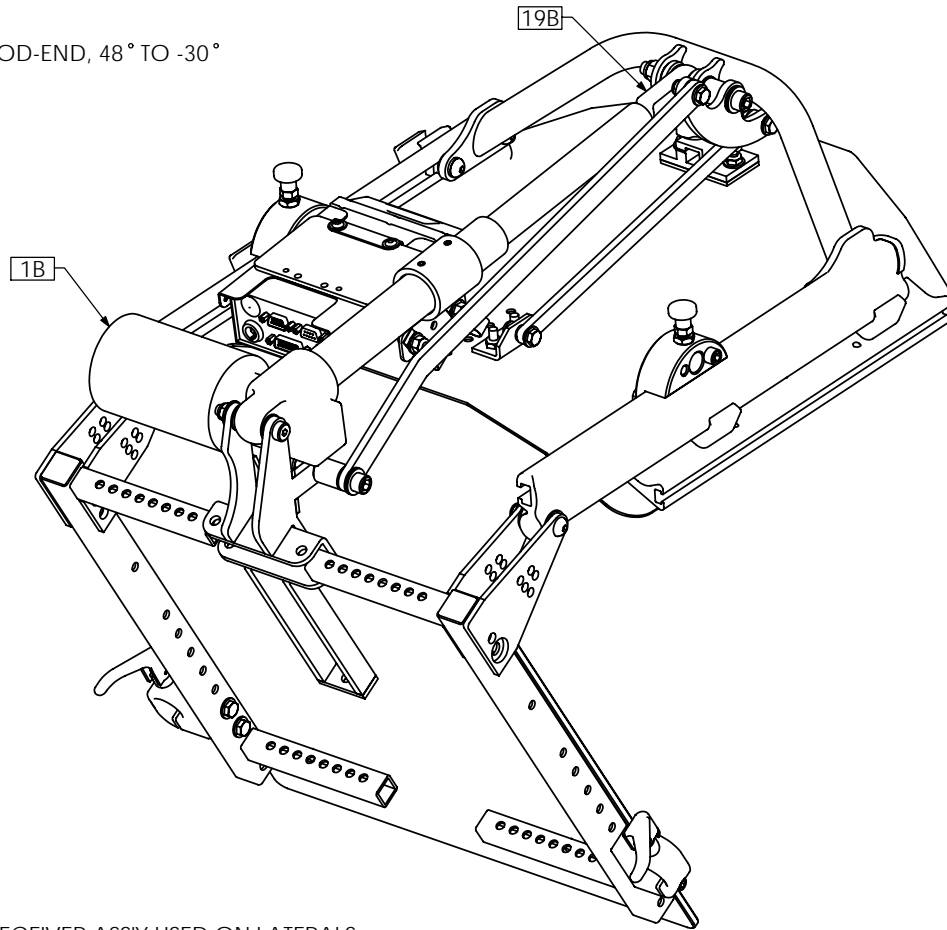


ITEM NO.	QTY.	PART NO.	DESCRIPTION
1	1	TRX0970	MOUNTING BRACKET, RIGHT
2	1	TRX0971	MOUNTING BRACKET, LEFT
3	1	TRX1988	CROSS TUBE ASS'Y
4	2	TRH0445	¼-20 x ¾" BUTTON SOCKET CAP SCREW

TRC0490 - UPPER SEAT ASS'Y, PRECLINE AND ESR, LOW-PRO CGT

30° PRECLINE

(USING A 6" ACTUATOR AND A 3/4" ROD-END, 48° TO -30° IS ACHIEVED)

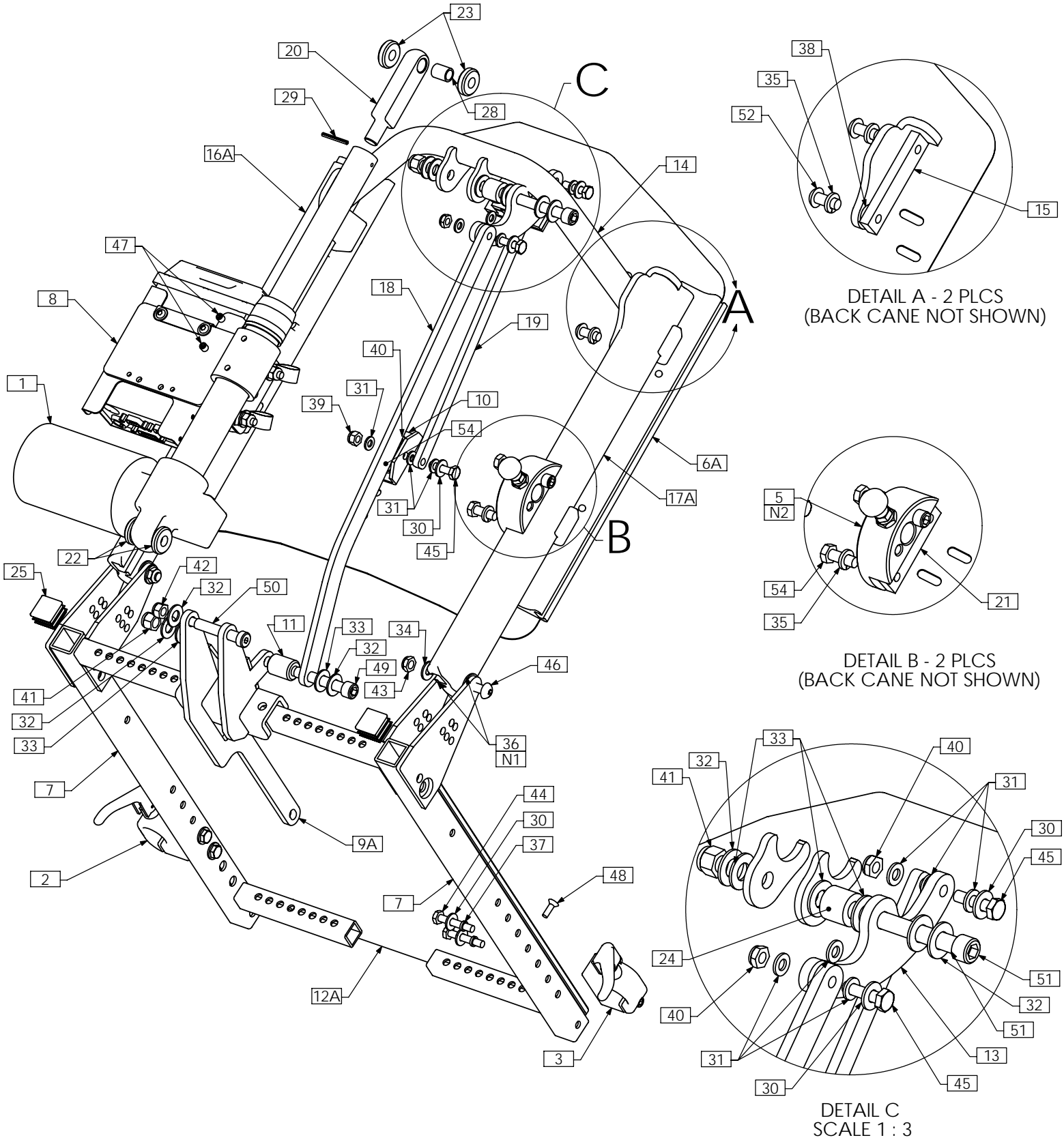


NOTES:

1. N/S = NOT SHOWN
2. SEE TRC0329 FOR EXTENDED REAR RECEIVER ASSY USED ON LATERALS

ITEM NO.	QTY.	PART NO.	DESCRIPTION	ITEM NO.	QTY.	PART NO.	DESCRIPTION
1A	1	TRA0489	ACTUATOR, 5" STROKE	24	2	TRM0107	SQUARE TUBE CAP
1B	1	TRA0564	ACTUATOR, 6" STROKE	25 N/S	1	TRM0208	BACK FLAP, VARIOUS SIZES
2	1	TRC0243	FRONT ARMREST RECEIVER ASS'Y, LEFT	26 N/S	1	TRM0215	RECLINE ACTUATOR SHROUD, HELIX
3	1	TRC0244	FRONT ARMREST RECEIVER ASS'Y, RIGHT	27	1	TRH0005	BUSHING 0.375 I.D X 0.500 O.D X 0.625 LG
4A N/S	1	TRC0294	LEGREST RECEIVER SELECTION	28	1	TRH0034	SLOTTED SPRING, TENSION PIN 0.125 x 1.125
4B N/S	1	TRC0551	CENTER MOUNT LEGREST RECEIVER SELECTION	29	7	TRH0101	1/4" FLAT WASHER
5	2	TRC0329	REAR ARMREST RECEIVER ASS'Y	30	9	TRH0102	1/4" NYLON WASHER
6A	1	TRC0491	CURVED RIGID BACK, RECLINE AND ESR	31	5	TRH0104	3/8" FLAT WASHER
6B N/S	1	TRC0339	RECESSED PLANAR BACK, RECLINE AND ESR	32	8	TRH0105	3/8" NYLON WASHER
6C N/S	1	TRC0340	CONTOUR BACK, RECLINE AND ESR	33	2	TRH0107	5/16" FLAT WASHER
7	1	TRC0407	SEAT SIDE FRAME SELECTION	34	8	TRH0108	5/16" LOCK WASHER
8	1	TRC0524	RELAY BOX MOUNT ASSY	35	4	TRH0109	5/16" NYLON WASHER
9	1	TRX0194	ESR BRACKET, BACK PAN	36	4	TRH0113	1/4" HI COLLAR LOCK WASHER
10	1	TRX0212	ESR LINK	37	2	TRH0124	5/16" x 5/8" OD x 0.120" TH FLAT WASHER
11	1	TRX0332	SPACER	38	1	TRH0201	1/4"-20 NYLOC NUT
12A	1	TRX0393	SEAT PAN 14"-18" WIDTHS	39	4	TRH0202	1/4"-20 SHALLOW NYLOC NUT
12B N/S	1	TRX0394	SEAT PAN, 19"-25" WIDTHS	40	2	TRH0204	3/8-16 NYLOC NUT
13	1	TRX0613	PIVOT PLATE	41	1	TRH0206	5/16-18 NYLOC NUT
14	1	TRX0640	PUSH BAR ASS'Y	42	2	TRH0207	5/16-18 SHALLOW NYLOC NUT
15	2	TRX0679	CLAMPING BAR	43	4	TRH0301	1/4"-20 x 1 1/2" HEX HEAD CAP SCREW
16A	1	TRX0709	EXTRUDED BACK CANE ASS'Y, 19"-22", LEFT	44	3	TRH0303	1/4"-20 x 1" HEX HEAD CAP SCREW
16B N/S	1	TRX0711	EXTRUDED BACK CANE ASS'Y, 23"-27", LEFT	45	2	TRH0321	5/16-18 x 1 3/4" BUTTON SOCKET CAP SCREW
17A	1	TRX0710	EXTRUDED BACK CANE ASS'Y, 19"-22", RIGHT	46	2	TRH0336	SET SCREW, 0.25 x 0.25
17B N/S	1	TRX0712	EXTRUDED BACK CANE ASS'Y, 23" - 27", RIGHT	47	4	TRH0339	#10-32 x 5/8" FLAT SOCKET CAP SCREW
18	1	TRX0717	ESR BACK PAN LINK	48	1	TRH0348	3/8-16 x 2 1/4" SOCKET HEAD CAP SCREW GR8
19A	1	TRX1148-400	ROD END	49	1	TRH0387	3/8-16 x 3 1/2" SOCKET HEAD CAP SCREW GR8
19B	1	TRX1148-325	ROD END	50	4	TRH0421	5/16-18 x 3/4" BUTTON SOCKET CAP SCREW
20	2	TRX1561	CLAMPING BAR	51	1	TRH0443	3/8 x 1 3/4" SOCKET HEAD SHOULDER BOLT
21	2	TRX1669-0290	SPACER, 3/8 X 1	52	2	TRH0454	1/4"-20 x 1/2" PHILLIPS TRUSS MACHINE SCREW
22	1	TRX1850	SPACER	53	4	TRH0507	5/16-18 x 7/8" HEX HEAD CAP SCREW
23	1	TRX2460	PRECLINE BRACKET WLD				

TRC0618 - UPPER SEAT ASS'Y, RECLINE-ONLY w/ESR



NOTE: THIS ASSEMBLY DRAWING CAN BE USED AS A REFERENCE FOR STANDARD AND MEDIUM DEPTH APPLICATION RECLINE AND ESR UPPER SEAT ASSEMBLIES. SPECIAL PIVOT/MAXIMUM RECLINE AND LOW BACK SEAT SIDE FRAMES ARE NOT USED FOR LOW-PRO APPLICATIONS. REFER TO TRC0407 - SEAT SIDE SELECTION PAGE OF PARTS MANUAL

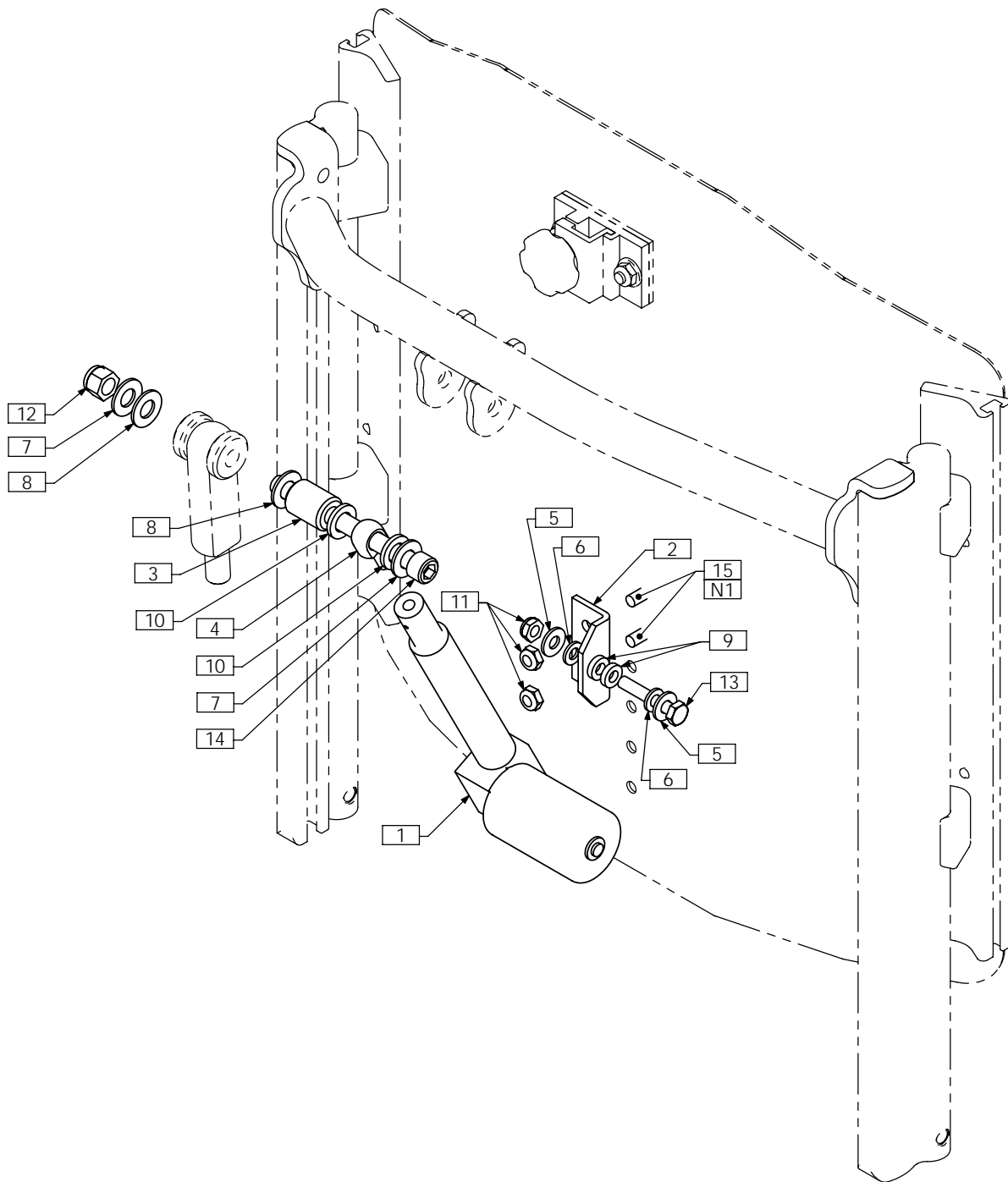
TRC0618 - UPPER SEAT ASS'Y, RECLINE-ONLY w/ESR

ITEM NO.	QTY.	PART NO.	DESCRIPTION
1	1	TRA0489	ACTUATOR, 5" STROKE
2	1	TRC0243	FRONT ARMREST RECEIVER ASS'Y, LEFT
3	1	TRC0244	FRONT ARMREST RECEIVER ASS'Y, RIGHT
4A N/S	1	TRC0294	LEGREST RECEIVER SELECTION
4B N/S	1	TRC0551	CENTER MOUNT LEGREST RECEIVER SELECTION
5	2	TRC0329	REAR ARMREST RECEIVER ASS'Y
6A	1	TRC0491	CURVED RIGID BACK, RECLINE AND ESR
6B N/S	1	TRC0339	RECESSED PLANAR BACK, RECLINE AND ESR
6C N/S	1	TRC0340	CONTOUR BACK, RECLINE AND ESR
7	1	TRC0407	SEAT SIDE FRAME SELECTION
8	1	TRC0524	RELAY BOX MOUNT ASS'Y
9A	1	TRX0169	RECLINE BRACKET ASS'Y
9B N/S	1	TRX1034	RECLINE BRACKET ASS'Y
9C N/S	1	TRX1151	RECLINE BRACKET ASS'Y
10	1	TRX0194	ESR BRACKET, BACK PAN
11	1	TRX0332	SPACER
12A	1	TRX0393	SEAT PAN 14"-18" WIDTHS
12B N/S	1	TRX0394	SEAT PAN, 19"-25" WIDTHS
13	1	TRX0613	PIVOT PLATE
14	1	TRX0640	PUSH BAR ASS'Y
15	2	TRX0679	CLAMPING BAR
16A	1	TRX0709	EXTRUDED BACK CANE ASS'Y, 19"-22", LEFT
16B N/S	1	TRX0711	EXTRUDED BACK CANE ASS'Y, 23"-27", LEFT
17A	1	TRX0710	EXTRUDED BACK CANE ASS'Y, 19"-22", RIGHT
17B N/S	1	TRX0712	EXTRUDED BACK CANE ASS'Y, 23" - 27", RIGHT
18	1	TRX0716	ESR ANGLED LINK
19	1	TRX0717	ESR BACK PAN LINK
20	1	TRX1148-388	ROD END
21	2	TRX1561	CLAMPING BAR
22	2	TRX1669-0237	SPACER, 3/8 X 1
23	2	TRX1669-0290	SPACER, 3/8 X 1
24	1	TRX1850	SPACER
25	2	TRM0107	SQUARE TUBE CAP
26 N/S	1	TRM0208	BACK FLAP, VARIOUS SIZES
27 N/S	1	TRM0215	RECLINE ACTUATOR SHROUD, HELIX
28	1	TRH0005	BUSHING 0.375 I.D X 0.500 O.D X 0.625 LG
29	1	TRH0034	SLOTTED SPRING, TENSION PIN 0.125 x 1.125
30	7	TRH0101	¼" FLAT WASHER
31	9	TRH0102	¼" NYLON WASHER
32	5	TRH0104	3/8" FLAT WASHER
33	6	TRH0105	3/8" NYLON WASHER
34	2	TRH0107	5/16" FLAT WASHER
35	8	TRH0108	5/16" LOCK WASHER
36	4	TRH0109	5/16" NYLON WASHER
37	4	TRH0113	¼" HI COLLAR LOCK WASHER
38	2	TRH0124	5/16" x 5/8"OD x 0.120" TH FLAT WASHER
39	1	TRH0201	¼-20 NYLOC NUT
40	4	TRH0202	¼-20 SHALLOW NYLOC NUT
41	2	TRH0204	3/8-16 NYLOC NUT
42	1	TRH0206	5/16-18 NYLOC NUT
43	2	TRH0207	5/16-18 SHALLOW NYLOC NUT
44	4	TRH0301	¼-20 x 1 ½" HEX HEAD CAP SCREW
45	3	TRH0303	¼-20 x 1" HEX HEAD CAP SCREW
46	2	TRH0321	5/16-18 x 1 ¾" BUTTON SOCKET CAP SCREW
47	2	TRH0336	SET SCREW, 0.25 x 0.25
48	4	TRH0339	#10-32 x 5/8" FLAT SOCKET CAP SCREW
49	1	TRH0348	3/8-16 x 2 ¼" SOCKET HEAD CAP SCREW GR8
50	1	TRH0379	3/8 x 2" SOCKET HEAD SHOULDER BOLT
51	1	TRH0387	3/8-16 x 3 ½" SOCKET HEAD CAP SCREW GR8
52	4	TRH0421	5/16-18 x ¾" BUTTON SOCKET CAP SCREW
53	2	TRH0454	¼-20 x ½" PHILLIPS TRUSS MACHINE SCREW
54	4	TRH0507	5/16-18 x 7/8" HEX HEAD CAP SCREW

NOTES:

1. N/S = NOT SHOWN
2. SEE TRC0329 FOR EXTENDED REAR RECEIVER ASS'Y USED ON LATERALS

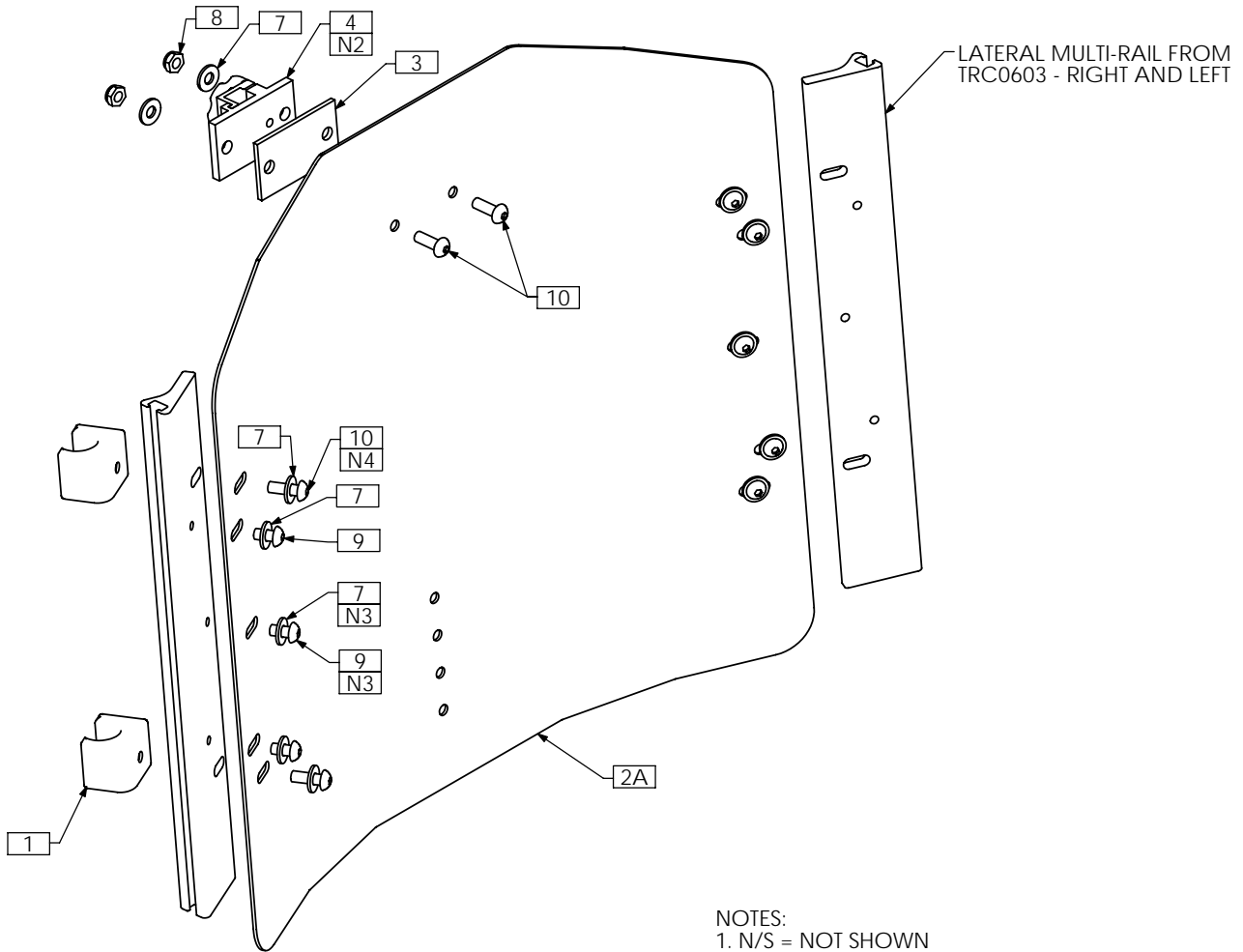
TRC0449 - POWER SLIDING BACK



NOTES:
 1. SET BACK AT DESIRED UPPER HEIGHT. FULLY RETRACT ACTUATOR
 DRILL HOLES FOR MACHINE SCREWS

ITEM NO.	QTY.	PART NO.	DESCRIPTION	ITEM NO.	QTY.	PART NO.	DESCRIPTION
1	1	TRA0208	ACTUATOR, 3" STROKE	9	2	TRH0133	¼"ID x ½"OD x 0.125" NYLON WASHER
2	1	TRX0194	ESR BRACKET, BACK PAN	10	2	TRH0140	7/16" NYLON WASHER, THICK
3	1	TRX0332	SPACER	11	3	TRH0202	¼-20 SHALLOW NYLOC NUT
4	1	TRX2758	3/8 ROD END	12	1	TRH0204	3/8-16 NYLOC NUT
5	2	TRH0101	¼" FLAT WASHER	13	1	TRH0301	¼-20 x 1½" HEX HEAD CAP SCREW
6	2	TRH0102	¼" NYLON WASHER	14	1	TRH0361	3/8-16 x 4" SOCKET HEAD CAP SCREW GR8
7	2	TRH0104	3/8" FLAT WASHER	15	2	TRH0454	¼-20 x ½" PHILLIPS TRUSS MACHINE SCREW
8	2	TRH0105	3/8" NYLON WASHER				

TRC0491 - CURVED RIGID BACK, RECLINE AND ESR, STEEL

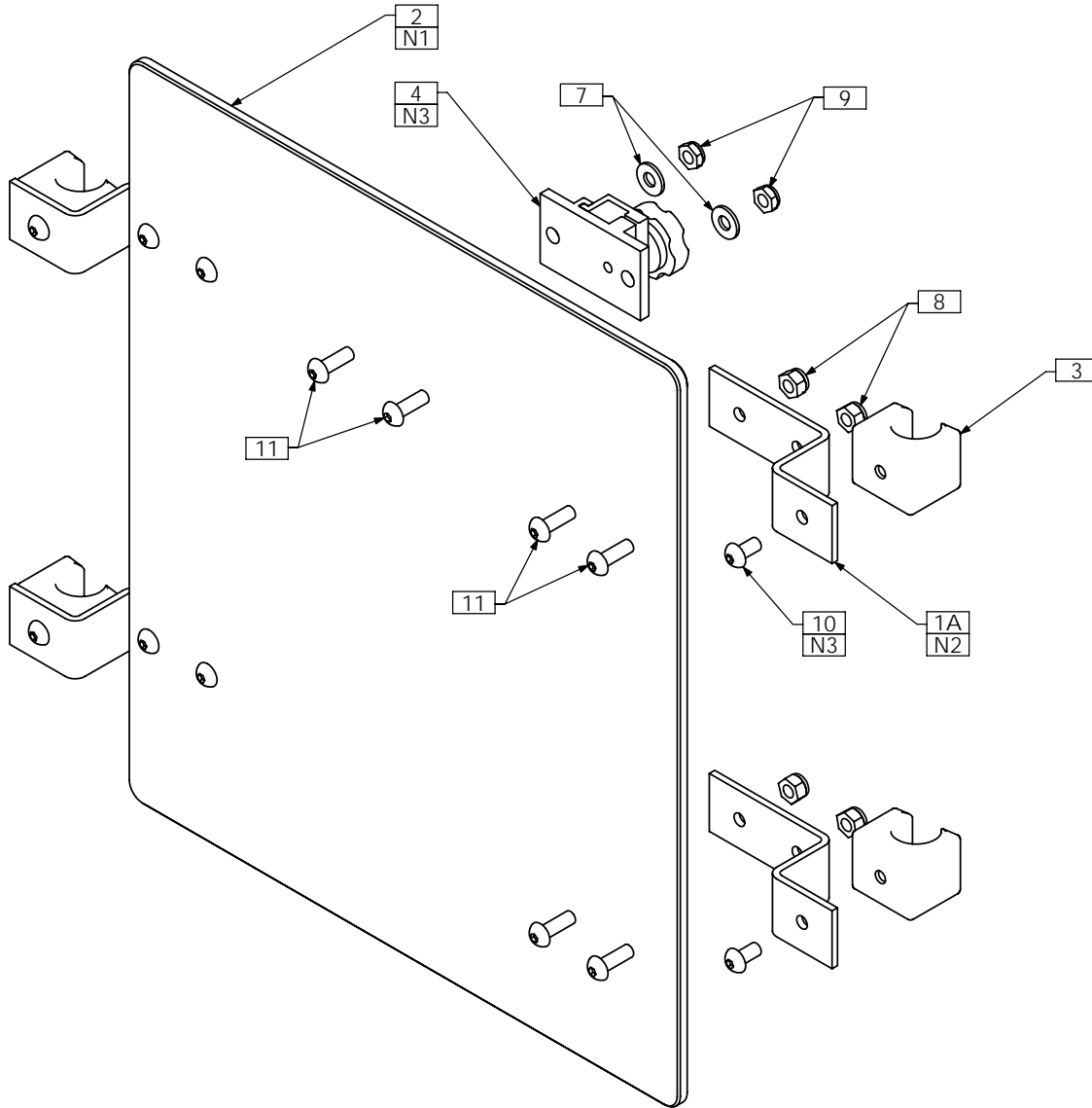


- NOTES:
 1. N/S = NOT SHOWN
 2. TRM0036 NOT REQUIRED FOR ONYX HEADREST - SEE TRC0326
 3. NOT REQUIRED FOR 12H AND 13H BACKS
 4. USE LOCTITE (4)

Steel Curved Back	20" High	19" High	18" High	17" High	16" High	15" High	14" High	13" High	12" High
21" Wide	TRX2632-2120	TRX2632-2119	TRX2632-2118	TRX2632-2117	TRX2632-2116	N/A	N/A	N/A	N/A
20" Wide	TRX2632-2020	TRX2632-2019	TRX2632-2018	TRX2632-2017	TRX2632-2016	TRX2632-2015	TRX2632-2014	N/A	N/A
19" Wide	TRX2632-1920	TRX2632-1919	TRX2632-1918	TRX2632-1917	TRX2632-1916	TRX2632-1915	TRX2632-1914	N/A	N/A
18" Wide	TRX2632-1820	TRX2632-1819	TRX2632-1818	TRX2632-1817	TRX2632-1816	TRX2632-1815	TRX2632-1814	TRX2636-1813	TRX2636-1812
17" Wide	TRX2632-1720	TRX2632-1719	TRX2632-1718	TRX2632-1717	TRX2632-1716	TRX2632-1715	TRX2632-1714	TRX2636-1713	TRX2636-1712
16" Wide	TRX2632-1620	TRX2632-1619	TRX2632-1618	TRX2632-1617	TRX2632-1616	TRX2632-1615	TRX2632-1614	TRX2636-1613	TRX2636-1612
15" Wide	TRX2632-1520	TRX2632-1519	TRX2632-1518	TRX2632-1517	TRX2632-1516	TRX2632-1515	TRX2632-1514	TRX2636-1513	TRX2636-1512
14" Wide	N/A	N/A	N/A	N/A	TRX3035-1416	TRX3035-1415	TRX3035-1414	TRX3034-1413	TRX3034-1412
13" Wide	N/A	N/A	N/A	N/A	TRX3037-1316	TRX3037-1315	TRX3037-1314	TRX3036-1313	TRX3036-1312
12" Wide	N/A	N/A	N/A	N/A	TRX3039-1216	TRX3039-1215	TRX3039-1214	TRX3038-1213	TRX3038-1212

ITEM NO.	QTY.	PART NO.	DESCRIPTION	ITEM NO.	QTY.	PART NO.	DESCRIPTION
1	4	TRX2580	ESR GLIDE BLOCK ASS'Y, MULTI-RAIL, 65 DEG	3	1	TRX2685	SHIM
2A	1	TRX2632	BACK PAN, 15W - 21W, 14H - 20H	4	1	TRM0036	HEADREST CLAMP ASS'Y
2B N/S	1	TRX2636	BACK PAN, 15W - 18W, 12H - 13H	5 N/S	1	TRS0029	CURVED STEEL BACK COVER
2C N/S	1	TRX3035	BACK PAN, 14W, 14H - 16H	6 N/S	1	TRS0051	CURVED STEEL BACK FOAM PAD
2D N/S	1	TRX3034	BACK PAN, 14W, 12H - 13H	7	12	TRH0101	1/4" FLAT WASHER
2E N/S	1	TRX3037	BACK PAN, 13W, 14H - 16H	8	2	TRH0202	1/4-20 SHALLOW NYLOC NUT
2F N/S	1	TRX3036	BACK PAN, 13W, 12H - 13H	9	6	TRH0429	1/4-20 x 1/2" BUTTON SOCKET CAP SCREW
2G N/S	1	TRX3039	BACK PAN, 12W, 14H - 16H	10	6	TRH0445	1/4-20 x 3/4" BUTTON SOCKET CAP SCREW
2H N/S	1	TRX3038	BACK PAN, 12W, 12H - 13H				

TRC0339 - RECESSED PLANAR BACK, RECLINE AND ESR

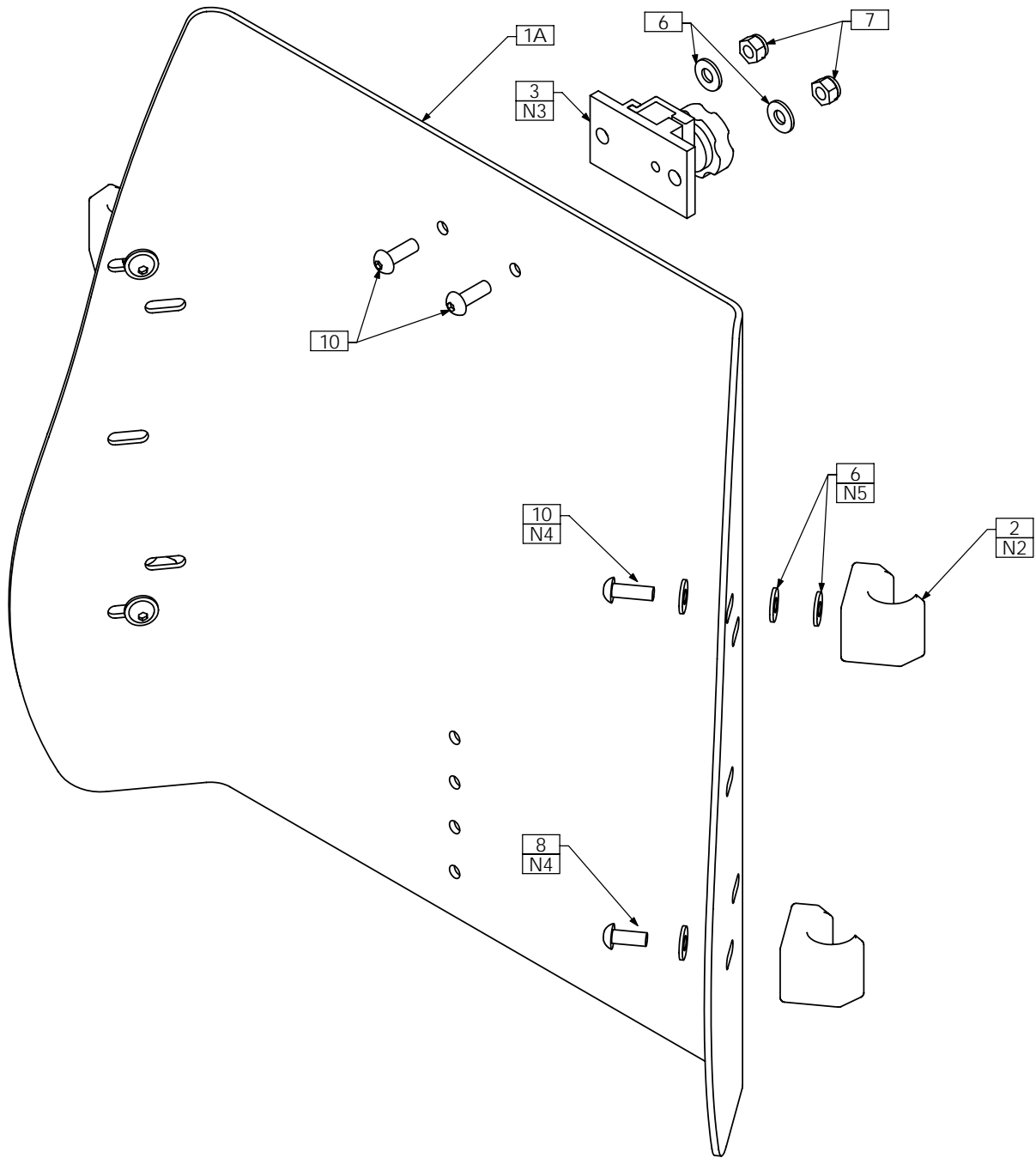


NOTES:

1. RECESSED BACK PAN IS MADE FROM SEAT PAN MATERIAL. SMALLEST SIZE SHOWN. BACK PAN SIZE DEPENDS ON SYSTEM SIZE.
2. PARTS IN ASSEMBLY SHOWN FOR KITTING PURPOSES ONLY. MOUNTING BRACKETS ARE LOCATED DURING THE UPPER SEAT ASSEMBLY. LOCATION DEPENDS ON BACK SIZE AND THE USE OF LATERALS
3. TRM0036 NOT REQUIRED FOR ONYX HEADREST - SEE TRC0326
4. USE LOCTITE (4)

ITEM NO.	QTY.	PART NO.	DESCRIPTION
1A	4	TRX0381	ESR MOUNTING BRACKET
1B N/S	4	TRX2931	ESR MOUNTING BRACKET, PEDIATRIC
2	1	TRX0393	SEAT PAN 14"-18" WIDTHS
3	4	TRX1727	ESR GLIDE BLOCK ASS'Y
4	1	TRM0036	HEADREST CLAMP ASS'Y
5 N/S	1	TRS0027	FLAT BACK COVER
6 N/S	1	TRS0050	FLAT BACK FOAM
7	2	TRH0101	¼" FLAT WASHER
8	8	TRH0201	¼-20 NYLOC NUT
9	2	TRH0202	¼-20 SHALLOW NYLOC NUT
10	4	TRH0429	¼-20 x ½" BUTTON SOCKET CAP SCREW
11	10	TRH0445	¼-20 x ¾" BUTTON SOCKET CAP SCREW

TRC0340 - CONTOUR BACK, RECLINE AND ESR

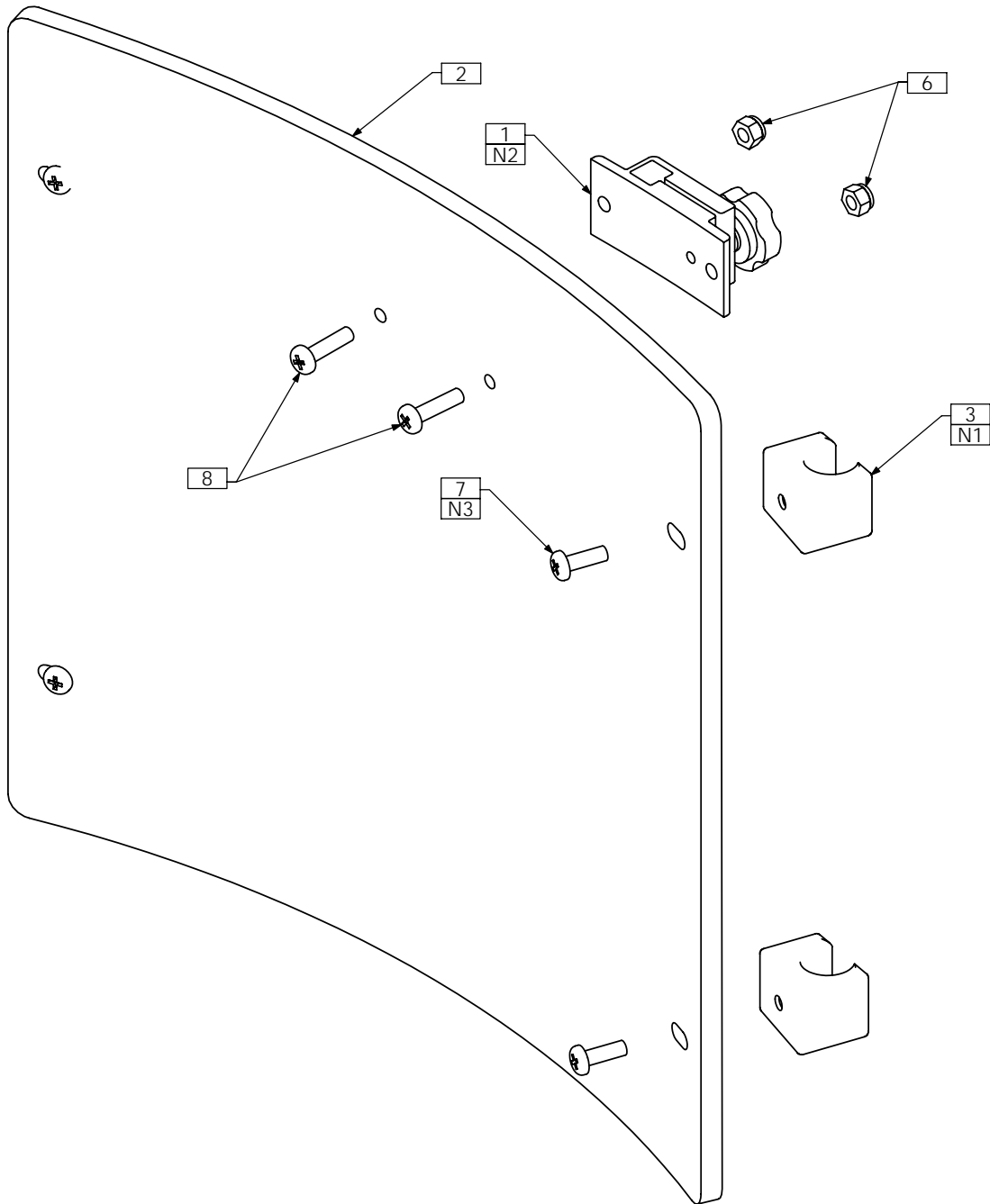


NOTES:

1. N/S = NOT SHOWN
2. PARTS IN ASSEMBLY SHOWN FOR KITTING PURPOSES ONLY. GLIDE BLOCKS ARE LOCATED DURING THE UPPER SEAT ASSEMBLY. LOCATION DEPENDS ON BACK SIZE AND THE USE OF LATERALS
3. TRM0036 NOT REQUIRED FOR ONYX HEADREST - SEE TRC0326
4. USE LOCTITE (2)
5. WASHERS USED TO PROVIDE CLEARANCE FROM BACK PAN EDGE TRIM. USE AS REQUIRED

ITEM NO.	QTY.	PART NO.	DESCRIPTION	ITEM NO.	QTY.	PART NO.	DESCRIPTION
1A	1	TRX1195	CONTOUR BACK PAN, 17H	5B N/S	1	TRS0022	CONTOUR BACK CUSHION ASS'Y, ONYX
1B N/S	1	TRX2741	CONTOUR BACK PAN, 15H	6	10	TRH0101	¼" FLAT WASHER
1C N/S	1	TRX2740	CONTOUR BACK PAN, 12H	7	2	TRH0201	¼-20 NYLOC NUT
2	4	TRX1728	ESR GLIDE BLOCK ASS'Y, CONTOUR BACK	8	2	TRH0308	¼-20 x 5/8" BUTTON SOCKET CAP SCREW
3	1	TRM0036	HEADREST CLAMP ASS'Y	9	1	TRH0429	¼-20 x ½" BUTTON SOCKET CAP SCREW
4 N/S	5ft	TRM0568	RUBBER EDGE TRIM, SMALL PROFILE	10	3	TRH0445	¼-20 x ¾" BUTTON SOCKET CAP SCREW
5A N/S	1	TRS0020	CONTOUR BACK CUSHION ASS'Y				

TRC0338 - CURVED RIGID BACK, RECLINE AND ESR

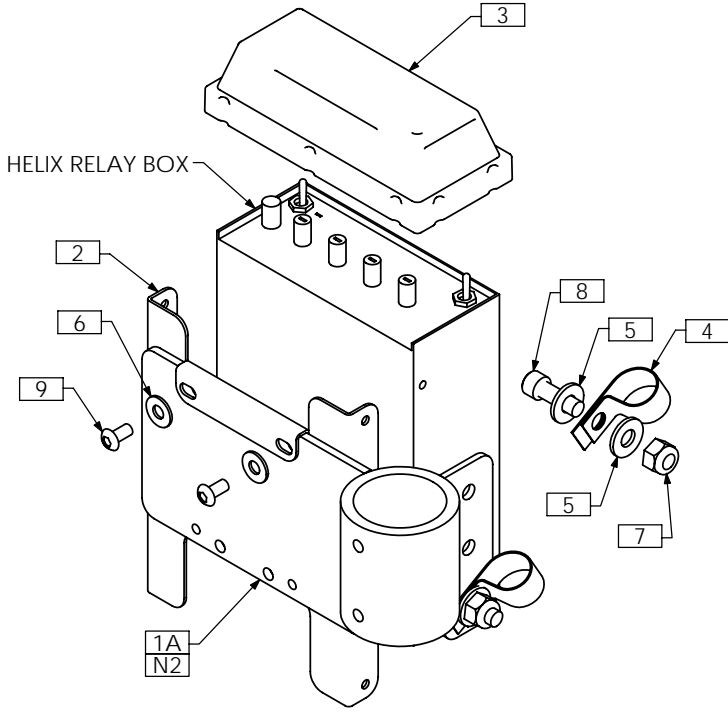


NOTES:

1. PARTS IN ASSEMBLY SHOWN FOR KITTING PURPOSES ONLY. GLIDE BLOCKS ARE LOCATED DURING THE UPPER SEAT ASSEMBLY. LOCATION DEPENDS ON BACK SIZE AND THE USE OF LATERALS
2. TRC0229 NOT REQUIRED FOR ONYX HEADREST - SEE TRC0326
3. IF NYLON PATCH DOES NOT ENGAGE THREAD, USE LOCTITE (4)

ITEM NO.	QTY.	PART NO.	DESCRIPTION
1	1	TRC0229	HEADREST CLAMP ASS'Y
2	1	TRX0429	BACK PAN
3	4	TRX1727	ESR GLIDE BLOCK ASS'Y
4 N/S	1	TRS0027	FLAT BACK COVER
5 N/S	1	TRS0050	FLAT BACK FOAM
6	2	TRH0201	¼-20 NYLOC NUT
7	4	TRH0307	¼-20 x ¾" PHILLIPS TRUSS MACHINE SCREW
8	2	TRH0355	¼-20 x 1" PHILLIPS TRUSS MACHINE SCREW

TRC0524 - RELAY BOX MOUNT ASS'Y, RECLINE



HELIX RELAY BOX - RECLINE

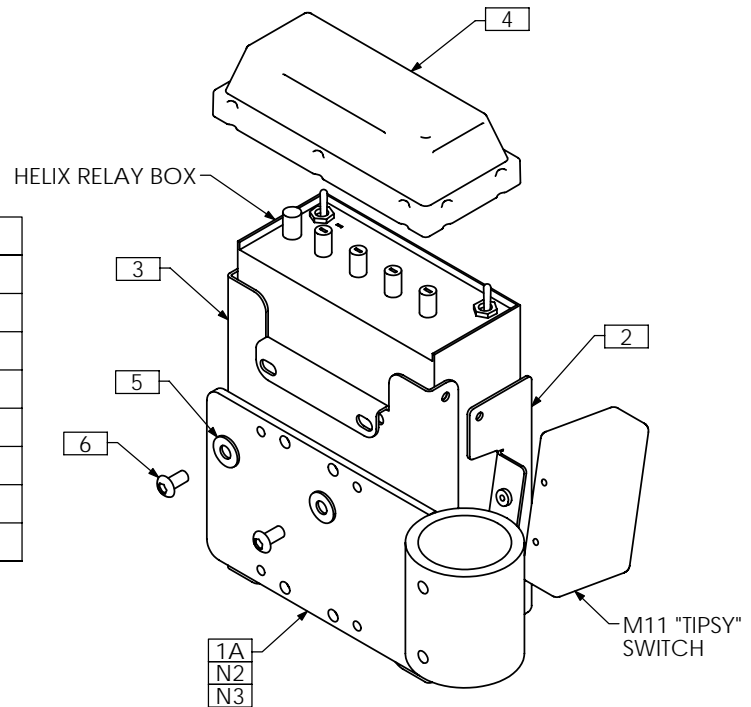
ITEM NO.	QTY.	PART NO.	DESCRIPTION
1A	1	TRX0670	RELAY BRACKET WLD
1B N/S	1	TRX1563	RELAY BRACKET WLD
2	1	TRX3098	RELAY BOX MTG BRKT
3	1	TRM0495	HELIX COVER
4	2	TRH0001	CLAMP
5	4	TRH0101	1/4" FLAT WASHER
6	2	TRH0114	3/16" FLAT WASHER
7	2	TRH0201	1/4-20 NYLOC NUT
8	2	TRH0401	1/4-20 x 3/4" SOCKET HEAD CAP SCREW GR8
9	2	TRH0475	#10-32 x 3/8" BUTTON SOCKET CAP SCREW

NOTES:
 1. N/S = NOT SHOWN
 2. ITEM 1B USED FOR PEDIATRIC APPLICATIONS

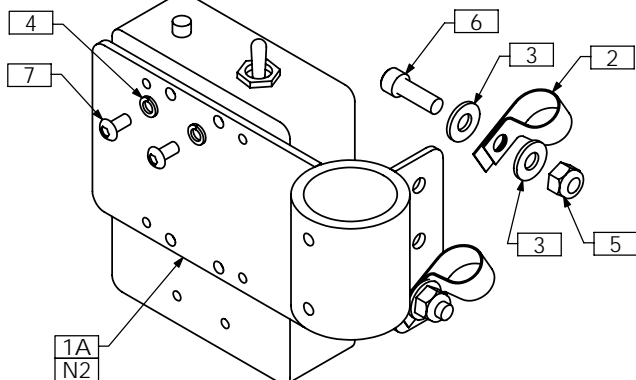
HELIX RELAY BOX WITH M11 "TIPSY" SWITCH - RECLINE

ITEM NO.	QTY.	PART NO.	DESCRIPTION
1A	1	TRX2530	RELAY BRACKET WLD
1B N/S	1	TRX1563	RELAY BRACKET WLD
1 C N/S	1	TRX3022	RELAY BRACKET WLD
2	1	TRX2612	VERTICAL TIPSY BRACKET ASSY
3	1	TRX3098	RELAY BOX MTG BRKT
4	1	TRM0495	HELIX COVER
5	2	TRH0114	3/16" FLAT WASHER
6	2	TRH0475	#10-32 x 3/8" BUTTON SOCKET CAP SCREW

NOTES:
 1. N/S = NOT SHOWN
 2. ITEM 1B USED FOR PEDIATRIC APPLICATIONS
 3. ITEM 1C USED FOR REARWARD BACK CANE APPLICATIONS



M33 RELAY BOX

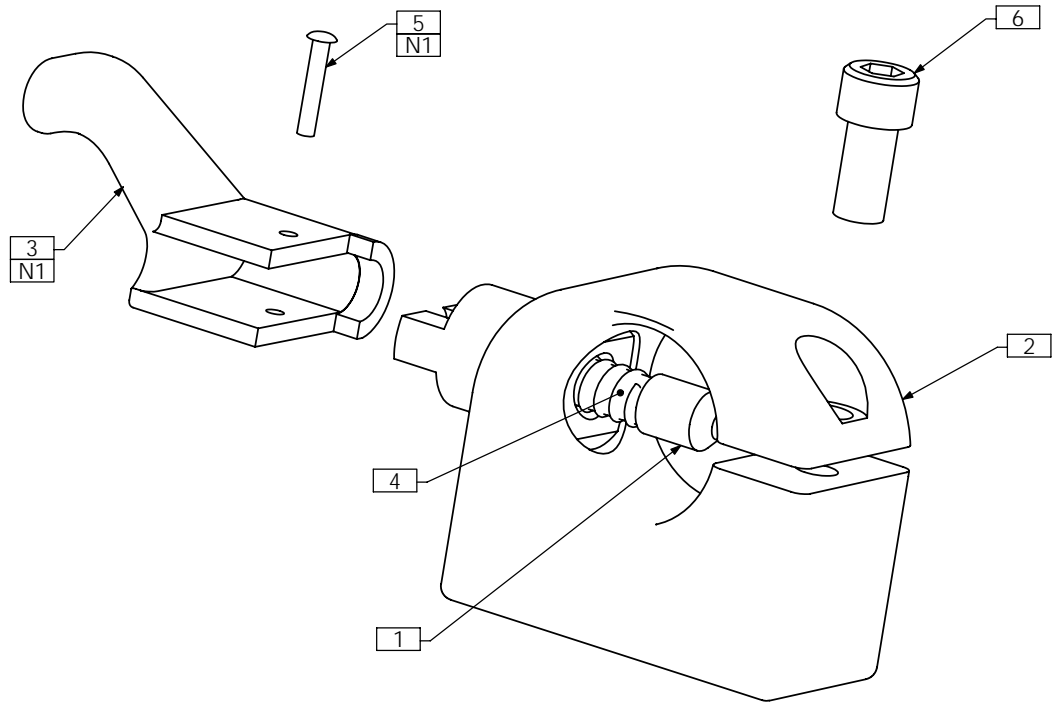


M33 RELAY BOX - RECLINE

ITEM NO.	QTY.	PART NO.	DESCRIPTION
1A	1	TRX0670	RELAY BRACKET WLD
1B N/S	1	TRX1563	RELAY BRACKET WLD
2	2	TRH0001	CLAMP
3	4	TRH0101	1/4" FLAT WASHER
4	2	TRH0134	#10 LOCKWASHER
5	2	TRH0201	1/4-20 NYLOC NUT
6	2	TRH0401	1/4-20 x 3/4" SOCKET HEAD CAP SCREW GR8
7	2	TRH0475	#10-32 x 3/8" BUTTON SOCKET CAP SCREW

NOTES:
 1. N/S = NOT SHOWN
 2. ITEM 1B USED FOR PEDIATRIC APPLICATIONS

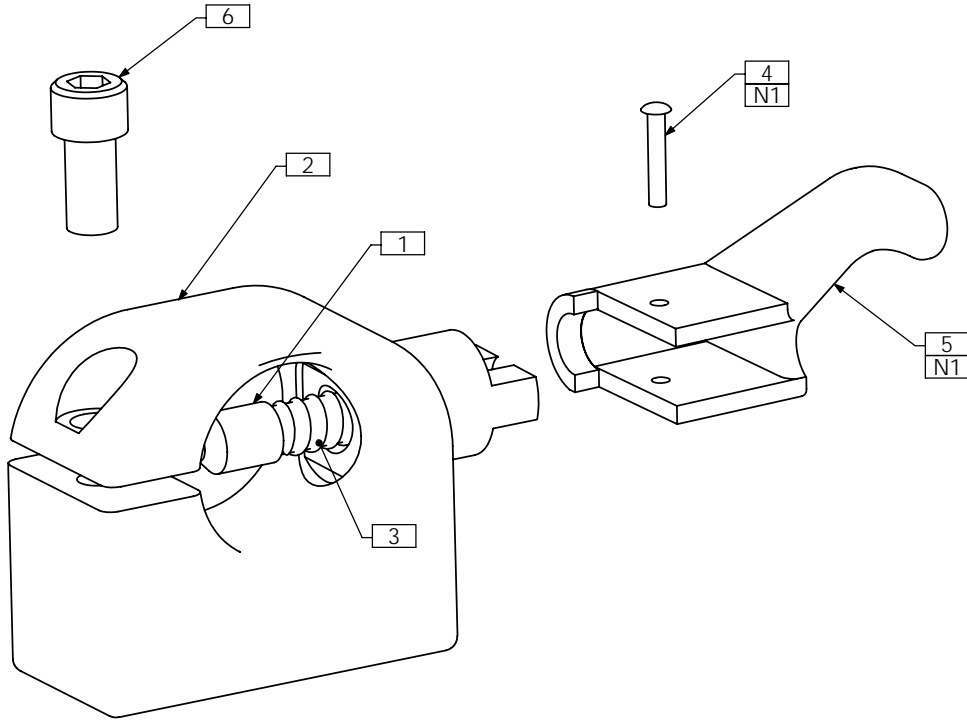
TRC0244 - FRONT ARMREST RECEIVER ASS'Y, RIGHT, RECLINE



NOTES:
1. FROM KIT TRM0196

ITEM NO.	QTY.	PART NO.	DESCRIPTION
1	1	TRX0320	PLUNGER
2	1	TRX0626	FRONT RECEIVER WLD
3	1	TRM0096	RIGHT ARM REST LEVER
4	1	TRM0097	SPRING
5	1	TRM0098	ARM REST PIN
6	1	TRH0482	¼-28 x ½" SOCKET HEAD CAP SCREW GR8

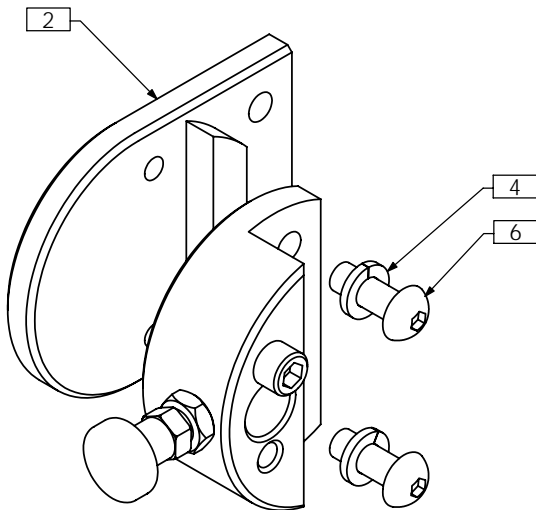
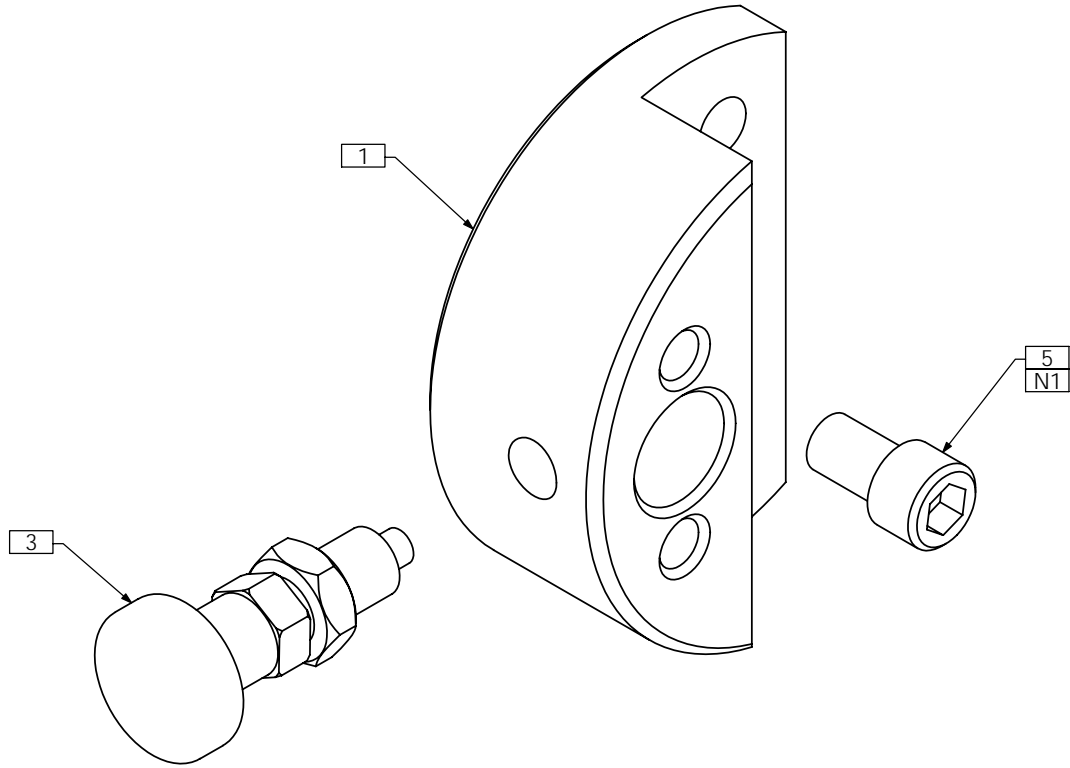
TRC0243 - FRONT ARMREST RECEIVER ASS'Y, LEFT, RECLINE



NOTES:
1. FROM KIT TRM0196

ITEM NO.	QTY.	PART NO.	DESCRIPTION
1	1	TRX0320	PLUNGER
2	1	TRX0626	FRONT RECEIVER WLD
3	1	TRM0097	SPRING
4	1	TRM0098	ARM REST PIN
5	1	TRM0105	LEFT ARM REST LEVER
6	1	TRH0482	¼-28 x ½" SOCKET HEAD CAP SCREW GR8

TRC0329 - REAR ARMREST RECEIVER ASS'Y, RECLINE



WITH EXTENSION WHEN USED WITH LATERALS

NOTES:

1. RIGHT SIDE VERSION SHOWN, INSTALL SCREW IN OPPOSITE HOLE FOR LEFT SIDE

ITEM NO.	QTY.	PART NO.	DESCRIPTION
1	1	TRX1387	ARMREST REAR RECEIVER
2	1	TRX1463	EXTENSION, ARMREST RECEIVER
3	1	TRM0214	PLUNGER
4	2	TRH0108	5/16" LOCK WASHER
5	1	TRH0422	5/16-18 x 1/2" SOCKET HEAD CAP SCREW GR8
6	2	TRH0430	5/16-18 x 7/8" BUTTON SOCKET CAP SCREW