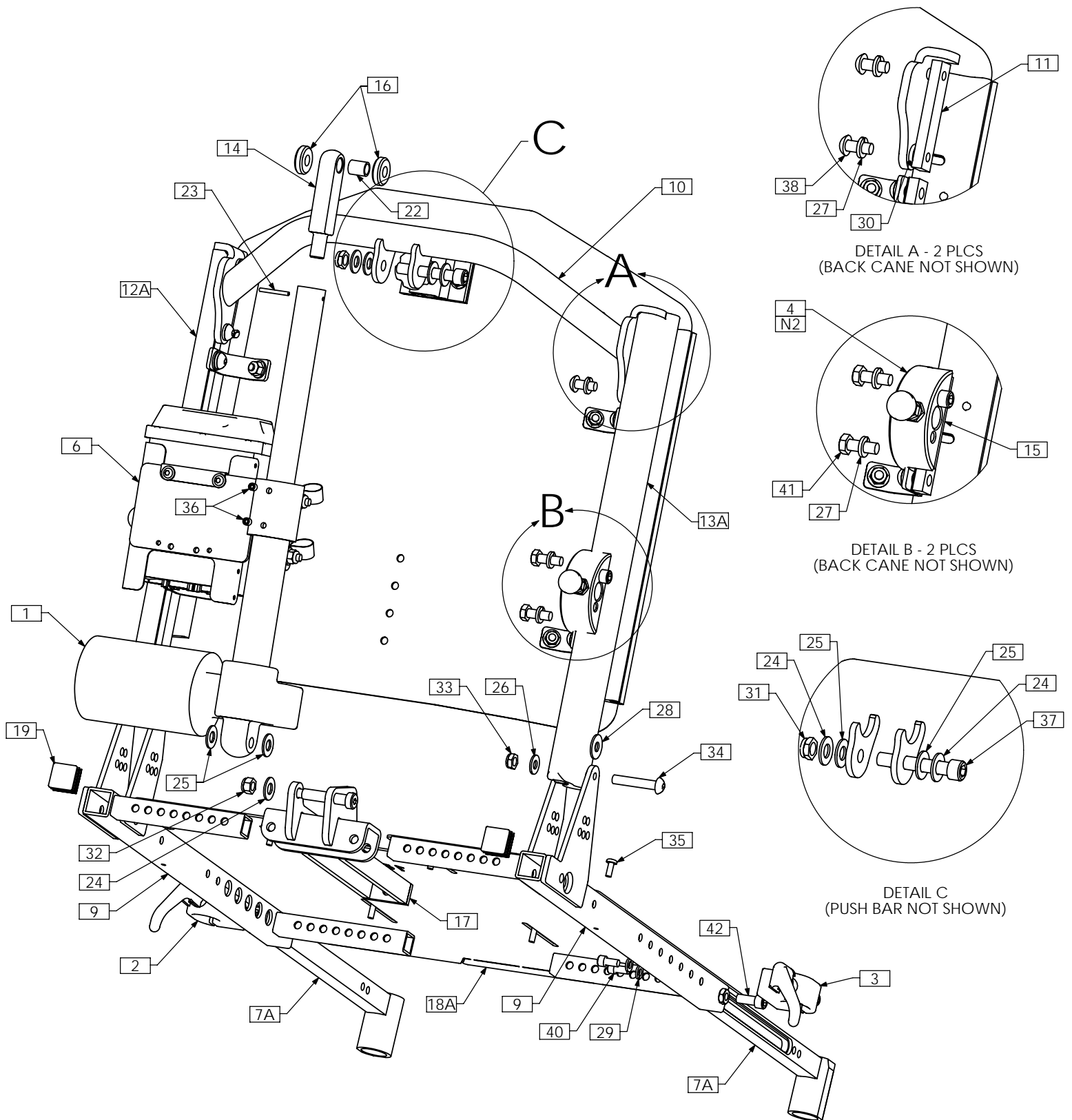


U P P E R S E A T I N G
W I T H R E C L I N E



TRC0530 - UPPER SEAT ASS'Y, RECLINE, ULTRA LOW, ADJUSTABLE SEAT DEPTH



SEAT PANS OF SIZE 19W X 21D AND LARGER WILL REQUIRE THE SEAT DEPTH EXTENSION KIT - TRC0313

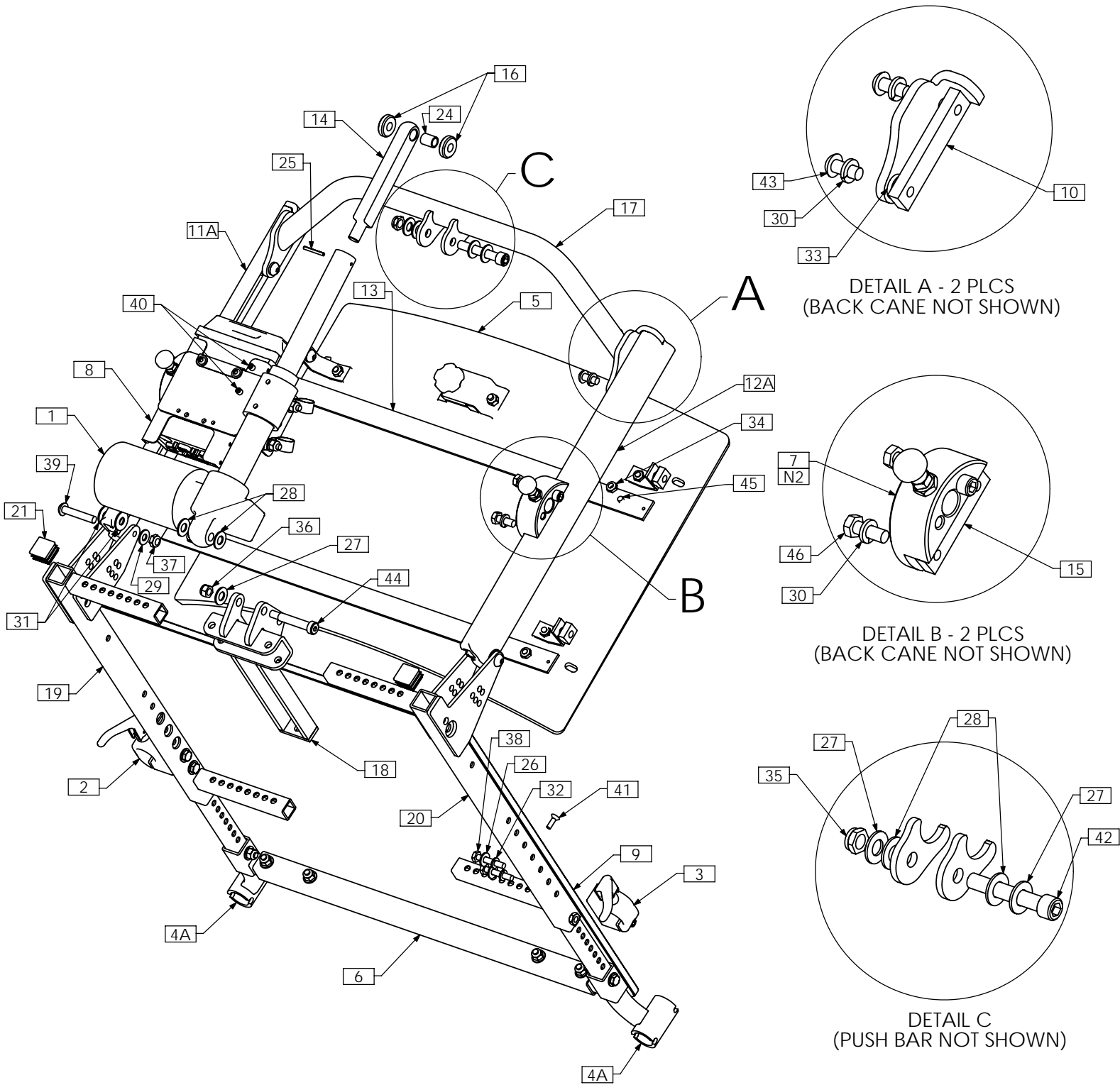
TRC0530 - UPPER SEAT ASS'Y, RECLINE, ULTRA LOW, ADJUSTABLE SEAT DEPTH

ITEM NO.	QTY.	PART NO.	DESCRIPTION
1	1	TRA0489	ACTUATOR, 5" STROKE
2	1	TRC0243	FRONT ARMREST RECEIVER ASS'Y, LEFT
3	1	TRC0244	FRONT ARMREST RECEIVER ASS'Y, RIGHT
4	2	TRC0329	REAR ARMREST RECEIVER ASS'Y
5A	1	TRC0519	CURVED RIGID BACK, RECLINE
5B N/S	1	TRC0336	RECESSED PLANAR BACK, RECLINE
5C N/S	1	TRC0337	CONTOUR BACK, RECLINE
6	1	TRC0524	RELAY BOX MOUNT ASS'Y
7A	1	TRC0535	LEGREST RECEIVER SELECTION
7B N/S	1	TRC0552	CENTER MOUNT LEGREST RECEIVER SELECTION
8 N/S	1	TRC0313	SEAT DEPTH EXTENSION KIT
9	1	TRC0607	ADJUSTABLE DEPTH SEAT SIDE FRAME SELECTION
10	1	TRX0640	PUSH BAR ASS'Y
11	2	TRX0679	CLAMPING BAR
12A	1	TRX0709	EXTRUDED BACK CANE ASS'Y, 19"-22", LEFT
12B N/S	1	TRX0711	EXTRUDED BACK CANE ASS'Y, 23"-27", LEFT
13A	1	TRX0710	EXTRUDED BACK CANE ASS'Y, 19"-22", RIGHT
13B N/S	1	TRX0712	EXTRUDED BACK CANE ASS'Y, 23" - 27", RIGHT
14	1	TRX1148-388	ROD END
15	2	TRX1561	CLAMPING BAR
16	2	TRX1669-0290	SPACER, 3/8 X 1
17	1	TRX3082	RECLINE BRACKET WLD
18A	1	TRX3262	SEAT PAN, 16DP - 19DP
18B N/S	1	TRX3261	SEAT PAN, 14DP - 17DP
18C N/S	1	TRX3357	SEAT PAN, 19DP - 22DP
19	2	TRM0107	SQUARE TUBE CAP
20 N/S	1	TRM0208	BACK FLAP, VARIOUS SIZES
21 N/S	1	TRM0215	RECLINE ACTUATOR SHROUD, HELIX
22	1	TRH0005	3/8"ID x 1/2"OD x 5/8" BRONZE BUSHING
23	1	TRH0034	SLOTTED SPRING, TENSION PIN 0.125 x 1.125
24	3	TRH0104	3/8" FLAT WASHER
25	4	TRH0105	3/8" NYLON WASHER
26	2	TRH0107	5/16" FLAT WASHER
27	8	TRH0108	5/16" LOCK WASHER
28	4	TRH0109	5/16" NYLON WASHER
29	4	TRH0115	1/4" LOCK WASHER
30	2	TRH0124	5/16" x 5/8"OD x 0.120" TH FLAT WASHER
31	1	TRH0205	3/8-16 SHALLOW NYLOC NUT
32	1	TRH0206	5/16-18 NYLOC NUT
33	2	TRH0207	5/16-18 SHALLOW NYLOC NUT
34	2	TRH0321	5/16-18 x 1 3/4" BUTTON SOCKET CAP SCREW
35	6	TRH0325	#10-32 x 1/2" PHILLIPS TRUSS MACHINE SCREW
36	2	TRH0336	SET SCREW, 0.25 x 0.25
37	1	TRH0348	3/8-16 x 2 1/4" SOCKET HEAD CAP SCREW GR8
38	4	TRH0421	5/16-18 x 3/4" BUTTON SOCKET CAP SCREW
39	1	TRH0443	3/8 x 1 3/4" SOCKET HEAD SHOULDER BOLT
40	4	TRH0459	1/4-20 x 1/2" SOCKET HEAD CAP SCREW GR8
41	4	TRH0507	5/16-18 x 7/8" HEX HEAD CAP SCREW
42	2	TRH0517	5/16-24 x 3/4" SOCKET HEAD CAP SCREW GR8

NOTES:

1. N/S = NOT SHOWN
2. SEE TRC0329 FOR EXTENDED REAR RECEIVER ASS'Y USED WITH LATERALS

TRC0592 - UPPER SEAT ASS'Y, RECLINE, ULTRA LOW CGT, BARIATRIC



TRC0592 - UPPER SEAT ASS'Y, RECLINE, ULTRA LOW CGT, BARIATRIC

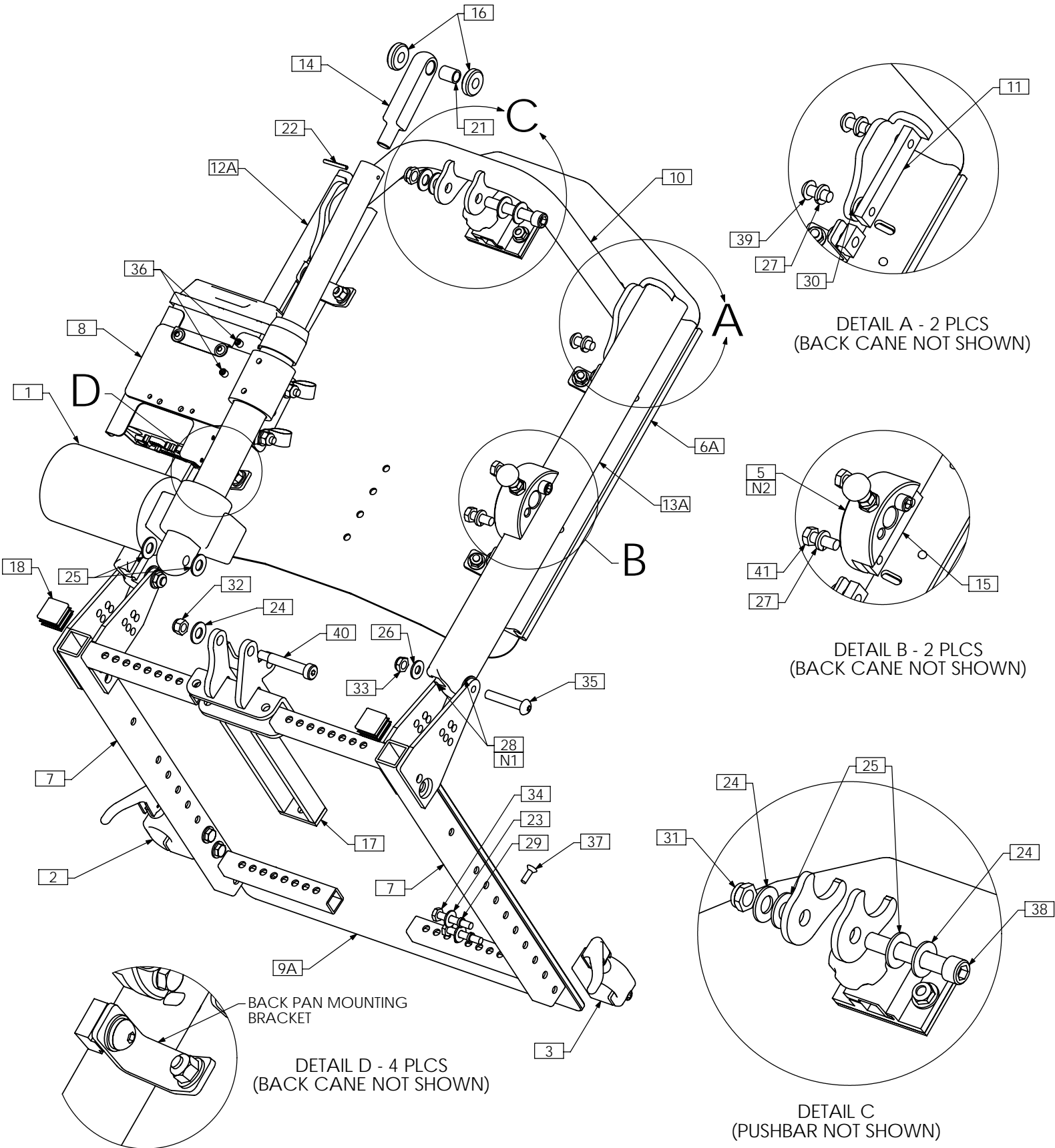
ITEM NO.	QTY.	PART NO.	DESCRIPTION
1	1	TRA0660	ACTUATOR, 4" STROKE
2	1	TRC0243	FRONT ARMREST RECEIVER ASS'Y, LEFT
3	1	TRC0244	FRONT ARMREST RECEIVER ASS'Y, RIGHT
4A	1	TRC0294	LEGREST RECEIVER SELECTION
4B N/S	1	TRC0551	CENTER MOUNT LEGREST RECEIVER SELECTION
5	1	TRC0335	CURVED RIGID BACK, RECLINE
6	1	TRC0313	SEAT DEPTH EXTENSION KIT
7	2	TRC0329	REAR ARMREST RECEIVER ASS'Y
8	1	TRC0524	RELAY BOX MOUNT ASS'Y
9	1	TRX0394	SEAT PAN, 19"-25" WIDTHS
10	2	TRX0679	CLAMPING BAR
11A	1	TRX0709	EXTRUDED BACK CANE ASS'Y, 19"-22", LEFT
11B N/S	1	TRX0711	EXTRUDED BACK CANE ASS'Y, 23"-27", LEFT
12A	1	TRX0710	EXTRUDED BACK CANE ASS'Y, 19"-22", RIGHT
12B N/S	1	TRX0712	EXTRUDED BACK CANE ASS'Y, 23" - 27", RIGHT
13	2	TRX0722	REINFORCING STRIP, BACK PAN
14	1	TRX1148-600	ROD END
15	2	TRX1561	CLAMPING BAR
16	2	TRX1669-0290	SPACER, 3/8 X 1
17	1	TRX2842	PUSH BAR WLD
18	1	TRX3082	RECLINE BRACKET WLD
19	1	TRX3285	SEAT SIDE WLD, LEFT
20	1	TRX3286	SEAT SIDE WLD, RIGHT
21	2	TRM0107	SQUARE TUBE CAP
22 N/S	1	TRM0208	BACK FLAP, VARIOUS SIZES
23 N/S	1	TRM0215	RECLINE ACTUATOR SHROUD, HELIX
24	1	TRH0005	BUSHING 0.375 I.D X 0.500 O.D X 0.625 LG
25	1	TRH0034	SLOTTED SPRING, TENSION PIN 0.125 x 1.125
26	4	TRH0101	¼" FLAT WASHER
27	3	TRH0104	3/8" FLAT WASHER
28	4	TRH0105	3/8" NYLON WASHER
29	2	TRH0107	5/16" FLAT WASHER
30	8	TRH0108	5/16" LOCK WASHER
31	4	TRH0109	5/16" NYLON WASHER
32	4	TRH0115	¼" LOCK WASHER
33	2	TRH0124	5/16" x 5/8" OD x 0.120" TH FLAT WASHER
34	4	TRH0202	¼-20 SHALLOW NYLOC NUT
35	1	TRH0205	3/8-16 SHALLOW NYLOC NUT
36	1	TRH0206	5/16-18 NYLOC NUT
37	2	TRH0207	5/16-18 SHALLOW NYLOC NUT
38	4	TRH0301	¼-20 x 1½" HEX HEAD CAP SCREW
39	2	TRH0321	5/16-18 x 1¾" BUTTON SOCKET CAP SCREW
40	2	TRH0336	SET SCREW, 0.25 x 0.25
41	4	TRH0339	#10-32 x 5/8" FLAT SOCKET CAP SCREW
42	1	TRH0348	3/8-16 x 2¼" SOCKET HEAD CAP SCREW GR8
43	4	TRH0421	5/16-18 x ¾" BUTTON SOCKET CAP SCREW
44	1	TRH0443	3/8 x 1¾" SOCKET HEAD SHOULDER BOLT
45	4	TRH0445	¼-20 x ¾" BUTTON SOCKET CAP SCREW
46	4	TRH0507	5/16-18 x 7/8" HEX HEAD CAP SCREW

NOTES:

1. N/S = NOT SHOWN

2. SEE TRC0329 FOR EXTENDED REAR RECEIVER ASS'Y USED WITH LATERALS

TRC0378 - UPPER SEAT ASS'Y, RECLINE, LOW-PRO CGT



NOTE: THIS ASSEMBLY DRAWING CAN BE USED AS A REFERENCE FOR STANDARD AND MEDIUM DEPTH APPLICATION RECLINE UPPER SEAT ASSEMBLIES. SPECIAL PIVOT/MAXIMUM RECLINE AND LOW BACK SEAT SIDE FRAMES ARE NOT USED FOR LOW-PRO APPLICATIONS. REFER TO TRC0407 - SEAT SIDE SELECTION PAGE OF PARTS MANUAL

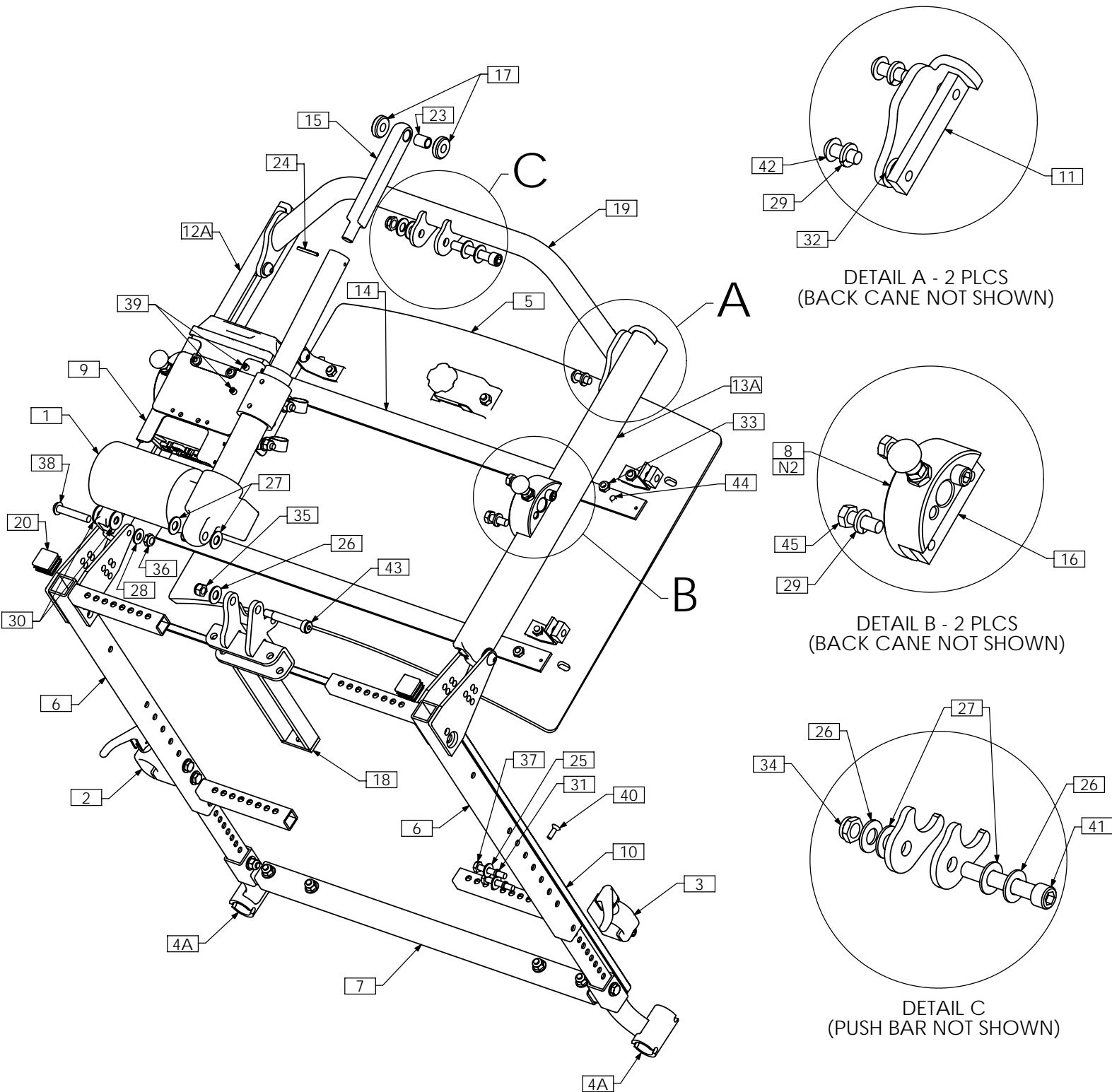
TRC0378 - UPPER SEAT ASS'Y, RECLINE, LOW-PRO CGT

ITEM NO.	QTY.	PART NO.	DESCRIPTION
1	1	TRA0489	ACTUATOR, 5" STROKE, STD END
2	1	TRC0243	FRONT ARMREST RECEIVER ASS'Y, LEFT
3	1	TRC0244	FRONT ARMREST RECEIVER ASS'Y, RIGHT
4A N/S	1	TRC0294	LEGREST RECEIVER SELECTION
4B N/S	1	TRC0551	CENTER MOUNT LEGREST RECEIVER SELECTION
5	2	TRC0329	REAR ARMREST RECEIVER ASS'Y
6A	1	TRC0519	CURVED RIGID BACK, RECLINE
6B N/S	1	TRC0336	RECESSED PLANAR BACK, RECLINE
6C N/S	1	TRC0337	CONTOUR BACK, RECLINE
7	1	TRC0407	SEAT SIDE FRAME SELECTION
8	1	TRC0524	RELAY BOX MOUNT ASS'Y
9A	1	TRX0393	SEAT PAN 14"-18" WIDTHS
9B N/S	1	TRX0394	SEAT PAN, 19"-25" WIDTHS
10	1	TRX0640	PUSH BAR ASS'Y
11	2	TRX0679	CLAMPING BAR
12A	1	TRX0709	EXTRUDED BACK CANE ASS'Y, 19"-22", LEFT
12B N/S	1	TRX0711	EXTRUDED BACK CANE ASS'Y, 23"-27", LEFT
13A	1	TRX0710	EXTRUDED BACK CANE ASS'Y, 19"-22", RIGHT
13B N/S	1	TRX0712	EXTRUDED BACK CANE ASS'Y, 23" - 27", RIGHT
14	1	TRX1148-388	ROD END
15	2	TRX1561	CLAMPING BAR
16	2	TRX1669-0290	SPACER, 3/8 X 1
17	1	TRX2154	RECLINE BRACKET WLD
18	2	TRM0107	SQUARE TUBE CAP
19 N/S	1	TRM0208	BACK FLAP, VARIOUS SIZES
20 N/S	1	TRM0215	RECLINE ACTUATOR SHROUD, HELIX
21	1	TRH0005	BUSHING 0.375 I.D X 0.500 O.D X 0.625 LG
22	1	TRH0034	SLOTTED SPRING, TENSION PIN 0.125 x 1.125
23	4	TRH0101	¼" FLAT WASHER
24	3	TRH0104	3/8" FLAT WASHER
25	4	TRH0105	3/8" NYLON WASHER
26	2	TRH0107	5/16" FLAT WASHER
27	8	TRH0108	5/16" LOCK WASHER
28	4	TRH0109	5/16" NYLON WASHER
29	4	TRH0113	¼" HI COLLAR LOCK WASHER
30	2	TRH0124	5/16" x 5/8" OD x 0.120" TH FLAT WASHER
31	1	TRH0205	3/8-16 SHALLOW NYLOC NUT
32	1	TRH0206	5/16-18 NYLOC NUT
33	2	TRH0207	5/16-18 SHALLOW NYLOC NUT
34	4	TRH0301	¼-20 x 1½" HEX HEAD CAP SCREW
35	2	TRH0321	5/16-18 x 1¾" BUTTON SOCKET CAP SCREW
36	2	TRH0336	SET SCREW, 0.25 x 0.25
37	4	TRH0339	#10-32 x 5/8" FLAT SOCKET CAP SCREW
38	1	TRH0348	3/8-16 x 2¼" SOCKET HEAD CAP SCREW GR8
39	4	TRH0421	5/16-18 x ¾" BUTTON SOCKET CAP SCREW
40	1	TRH0443	3/8 x 1¾" SOCKET HEAD SHOULDER BOLT
41	4	TRH0507	5/16-18 x 7/8" HEX HEAD CAP SCREW

NOTES:

1. N/S = NOT SHOWN
2. SEE TRC0329 FOR EXTENDED REAR RECEIVER ASS'Y USED WITH LATERALS

TRC0357 - UPPER SEAT ASS'Y, RECLINE, LOW-PRO CGT, BARIATRIC



DETAIL A - 2 PLCS
(BACK CANE NOT SHOWN)

DETAIL B - 2 PLCS
(BACK CANE NOT SHOWN)

DETAIL C
(PUSH BAR NOT SHOWN)

NOTES: THIS ASSEMBLY DRAWING CAN BE USED AS A REFERENCE FOR ALL DEPTH APPLICATION RECLINE-ONLY UPPER SEAT BARIATRIC ASSEMBLIES. REFER TO TRC0407 - SEAT SIDE SELECTION PAGE OF PARTS MANUAL.

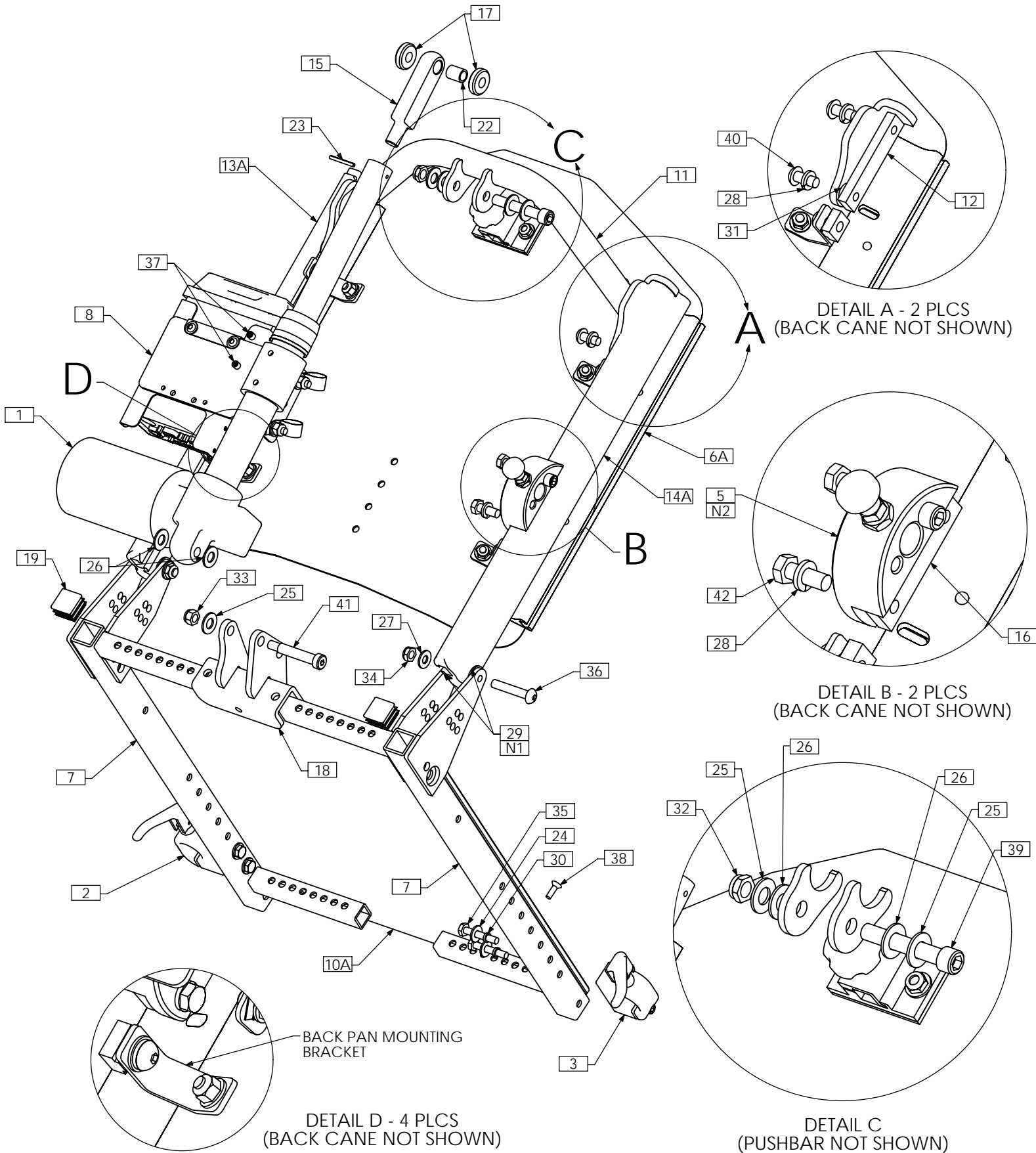
TRC0357 - UPPER SEAT ASS'Y, RECLINE, LOW-PRO CGT, BARIATRIC

ITEM NO.	QTY.	PART NO.	DESCRIPTION
1	1	TRA0660	ACTUATOR, 4" STROKE
2	1	TRC0243	FRONT ARMREST RECEIVER ASS'Y, LEFT
3	1	TRC0244	FRONT ARMREST RECEIVER ASS'Y, RIGHT
4A	1	TRC0294	LEGREST RECEIVER SELECTION
4B N/S	1	TRC0551	CENTER MOUNT LEGREST RECEIVER SELECTION
5	1	TRC0335	CURVED RIGID BACK, RECLINE
6	1	TRC0407	SEAT SIDE FRAME SELECTION
7	1	TRC0313	SEAT DEPTH EXTENSION KIT
8	2	TRC0329	REAR ARMREST RECEIVER ASS'Y
9	1	TRC0524	RELAY BOX MOUNT ASS'Y
10	1	TRX0394	SEAT PAN, 19"-25" WIDTHS
11	2	TRX0679	CLAMPING BAR
12A	1	TRX0709	EXTRUDED BACK CANE ASS'Y, 19"-22", LEFT
12B N/S	1	TRX0711	EXTRUDED BACK CANE ASS'Y, 23"-27", LEFT
13A	1	TRX0710	EXTRUDED BACK CANE ASS'Y, 19"-22", RIGHT
13B N/S	1	TRX0712	EXTRUDED BACK CANE ASS'Y, 23" - 27", RIGHT
14	2	TRX0722	REINFORCING STRIP, BACK PAN
15	1	TRX1148-600	ROD END
16	2	TRX1561	CLAMPING BAR
17	2	TRX1669-0290	SPACER, 3/8 X 1
18	1	TRX2154	RECLINE BRACKET WLD
19	1	TRX2842	PUSH BAR WLD
20	2	TRM0107	SQUARE TUBE CAP
21 N/S	1	TRM0208	BACK FLAP, VARIOUS SIZES
22 N/S	1	TRM0215	RECLINE ACTUATOR SHROUD, HELIX
23	1	TRH0005	BUSHING 0.375 I.D X 0.500 O.D X 0.625 LG
24	1	TRH0034	SLOTTED SPRING, TENSION PIN 0.125 x 1.125
25	4	TRH0101	¼" FLAT WASHER
26	3	TRH0104	3/8" FLAT WASHER
27	4	TRH0105	3/8" NYLON WASHER
28	2	TRH0107	5/16" FLAT WASHER
29	8	TRH0108	5/16" LOCK WASHER
30	4	TRH0109	5/16" NYLON WASHER
31	4	TRH0113	¼" HI COLLAR LOCK WASHER
32	2	TRH0124	5/16" x 5/8"OD x 0.120" TH FLAT WASHER
33	4	TRH0202	¼-20 SHALLOW NYLOC NUT
34	1	TRH0205	3/8-16 SHALLOW NYLOC NUT
35	1	TRH0206	5/16-18 NYLOC NUT
36	2	TRH0207	5/16-18 SHALLOW NYLOC NUT
37	4	TRH0301	¼-20 x 1½" HEX HEAD CAP SCREW
38	2	TRH0321	5/16-18 x 1¾" BUTTON SOCKET CAP SCREW
39	2	TRH0336	SET SCREW, 0.25 x 0.25
40	4	TRH0339	#10-32 x 5/8" FLAT SOCKET CAP SCREW
41	1	TRH0348	3/8-16 x 2¼" SOCKET HEAD CAP SCREW GR8
42	4	TRH0421	5/16-18 x ¾" BUTTON SOCKET CAP SCREW
43	1	TRH0443	3/8 x 1¾" SOCKET HEAD SHOULDER BOLT
44	4	TRH0445	¼-20 x ¾" BUTTON SOCKET CAP SCREW
45	4	TRH0507	5/16-18 x 7/8" HEX HEAD CAP SCREW

NOTES:

1. N/S = NOT SHOWN
2. SEE TRC0329 FOR EXTENDED REAR RECEIVER ASS'Y USED WITH LATERALS

TRC0513 - UPPER SEAT ASS'Y, RECLINE, SUPER LOW/SINGLE PIVOT



SEAT PANS OF SIZE 19W X 21D AND LARGER WILL REQUIRE THE SEAT DEPTH EXTENSION KIT - TRC0313

TRC0513 - UPPER SEAT ASS'Y, RECLINE, SUPER LOW/SINGLE PIVOT

ITEM NO.	QTY.	PART NO.	DESCRIPTION
1	1	TRA0489	ACTUATOR, 5" STROKE
2	1	TRC0243	FRONT ARMREST RECEIVER ASS'Y, LEFT
3	1	TRC0244	FRONT ARMREST RECEIVER ASS'Y, RIGHT
4A N/S	1	TRC0294	LEGREST RECEIVER SELECTION
4B N/S	1	TRC0551	CENTER MOUNT LEGREST RECEIVER SELECTION
5	2	TRC0329	REAR ARMREST RECEIVER ASS'Y
6A	1	TRC0519	CURVED RIGID BACK, RECLINE
6B N/S	1	TRC0336	RECESSED PLANAR BACK, RECLINE
6C N/S	1	TRC0337	CONTOUR BACK, RECLINE
7	1	TRC0407	SEAT SIDE FRAME SELECTION
8	1	TRC0524	RELAY BOX MOUNT ASS'Y
9 N/S	1	TRC0313	SEAT DEPTH EXTENSION KIT
10A	1	TRX0393	SEAT PAN 14"-18" WIDTHS
10B N/S	1	TRX0394	SEAT PAN, 19"-25" WIDTHS
11	1	TRX0640	PUSH BAR ASS'Y
12	2	TRX0679	CLAMPING BAR
13A	1	TRX0709	EXTRUDED BACK CANE ASS'Y, 19"-22", LEFT
13B N/S	1	TRX0711	EXTRUDED BACK CANE ASS'Y, 23"-27", LEFT
14A	1	TRX0710	EXTRUDED BACK CANE ASS'Y, 19"-22", RIGHT
14B N/S	1	TRX0712	EXTRUDED BACK CANE ASS'Y, 23" - 27", RIGHT
15	1	TRX1148-388	ROD END
16	2	TRX1561	CLAMPING BAR
17	2	TRX1669-0290	SPACER, 3/8 X 1
18	1	TRX2471	RECLINE BRACKET WLD
19	2	TRM0107	SQUARE TUBE CAP
20 N/S	1	TRM0208	BACK FLAP, VARIOUS SIZES
21 N/S	1	TRM0215	RECLINE ACTUATOR SHROUD, HELIX
22	1	TRH0005	BUSHING 0.375 I.D X 0.500 O.D X 0.625 LG
23	1	TRH0034	SLOTTED SPRING, TENSION PIN 0.125 x 1.125
24	4	TRH0101	¼" FLAT WASHER
25	3	TRH0104	3/8" FLAT WASHER
26	4	TRH0105	3/8" NYLON WASHER
27	2	TRH0107	5/16" FLAT WASHER
28	8	TRH0108	5/16" LOCK WASHER
29	4	TRH0109	5/16" NYLON WASHER
30	4	TRH0113	¼" HI COLLAR LOCK WASHER
31	2	TRH0124	5/16" x 5/8" OD x 0.120" TH FLAT WASHER
32	1	TRH0205	3/8-16 SHALLOW NYLOC NUT
33	1	TRH0206	5/16-18 NYLOC NUT
34	2	TRH0207	5/16-18 SHALLOW NYLOC NUT
35	4	TRH0301	¼-20 x 1½" HEX HEAD CAP SCREW
36	2	TRH0321	5/16-18 x 1¾" BUTTON SOCKET CAP SCREW
37	2	TRH0336	SET SCREW, 0.25 x 0.25
38	4	TRH0339	#10-32 x 5/8" FLAT SOCKET CAP SCREW
39	1	TRH0348	3/8-16 x 2¼" SOCKET HEAD CAP SCREW GR8
40	4	TRH0421	5/16-18 x ¾" BUTTON SOCKET CAP SCREW
41	1	TRH0443	3/8 x 1¾" SOCKET HEAD SHOULDER BOLT
42	4	TRH0507	5/16-18 x 7/8" HEX HEAD CAP SCREW

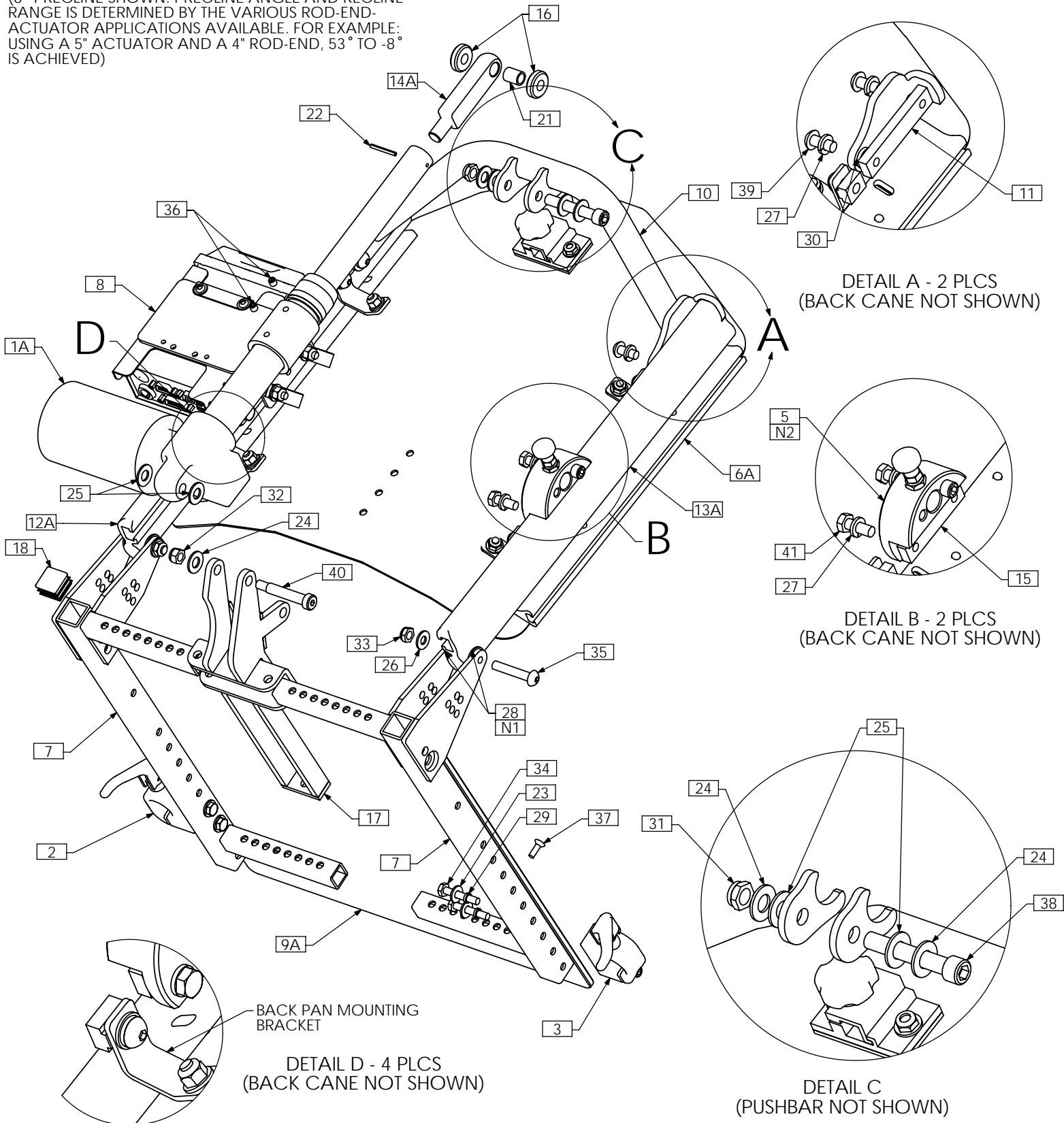
NOTES:

1. N/S = NOT SHOWN
2. SEE TRC0329 FOR EXTENDED REAR RECEIVER ASS'Y USED WITH LATERALS

TRC0489 - UPPER SEAT ASS'Y, PRECLINE, LOW-PRO CGT

8° PRECLINE

(8° PRECLINE SHOWN. PRECLINE ANGLE AND RECLINE RANGE IS DETERMINED BY THE VARIOUS ROD-END-ACTUATOR APPLICATIONS AVAILABLE. FOR EXAMPLE: USING A 5" ACTUATOR AND A 4" ROD-END, 53° TO -8° IS ACHIEVED)



DETAIL A - 2 PLCS
(BACK CANE NOT SHOWN)

DETAIL B - 2 PLCS
(BACK CANE NOT SHOWN)

DETAIL C
(PUSHBAR NOT SHOWN)

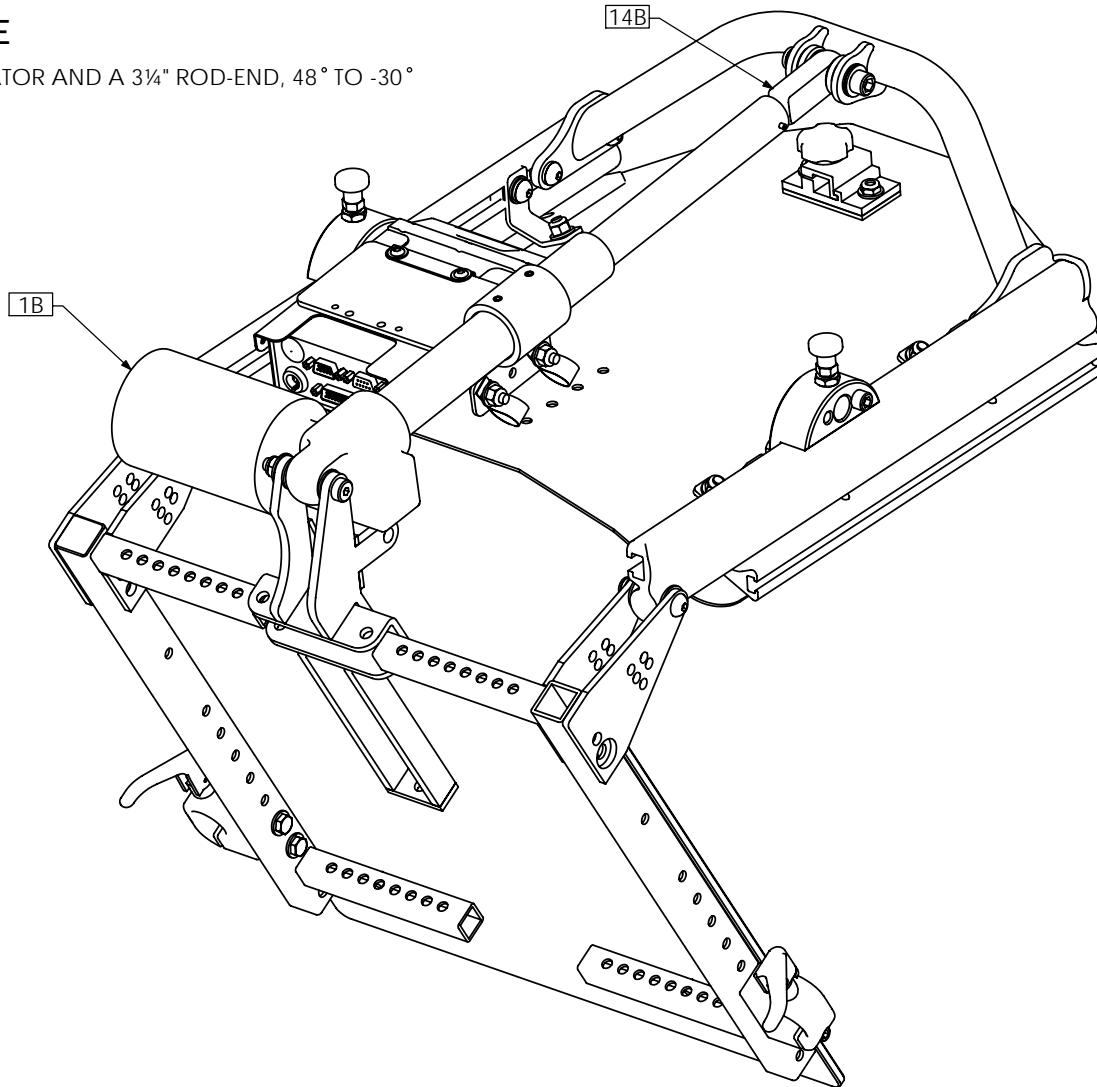
DETAIL D - 4 PLCS
(BACK CANE NOT SHOWN)

NOTE: THIS ASSEMBLY DRAWING CAN BE USED AS A REFERENCE FOR STANDARD AND MEDIUM DEPTH APPLICATION PRECLINE UPPER SEAT ASSEMBLIES. SPECIAL PIVOT/MAXIMUM RECLINE AND LOW BACK SEAT SIDE FRAMES ARE NOT USED FOR LOW-PRO APPLICATIONS. REFER TO TRC0407 - SEAT SIDE SELECTION PAGE OF PARTS MANUAL

TRC0489 - UPPER SEAT ASS'Y, PRECLINE, LOW-PRO CGT

30° PRECLINE

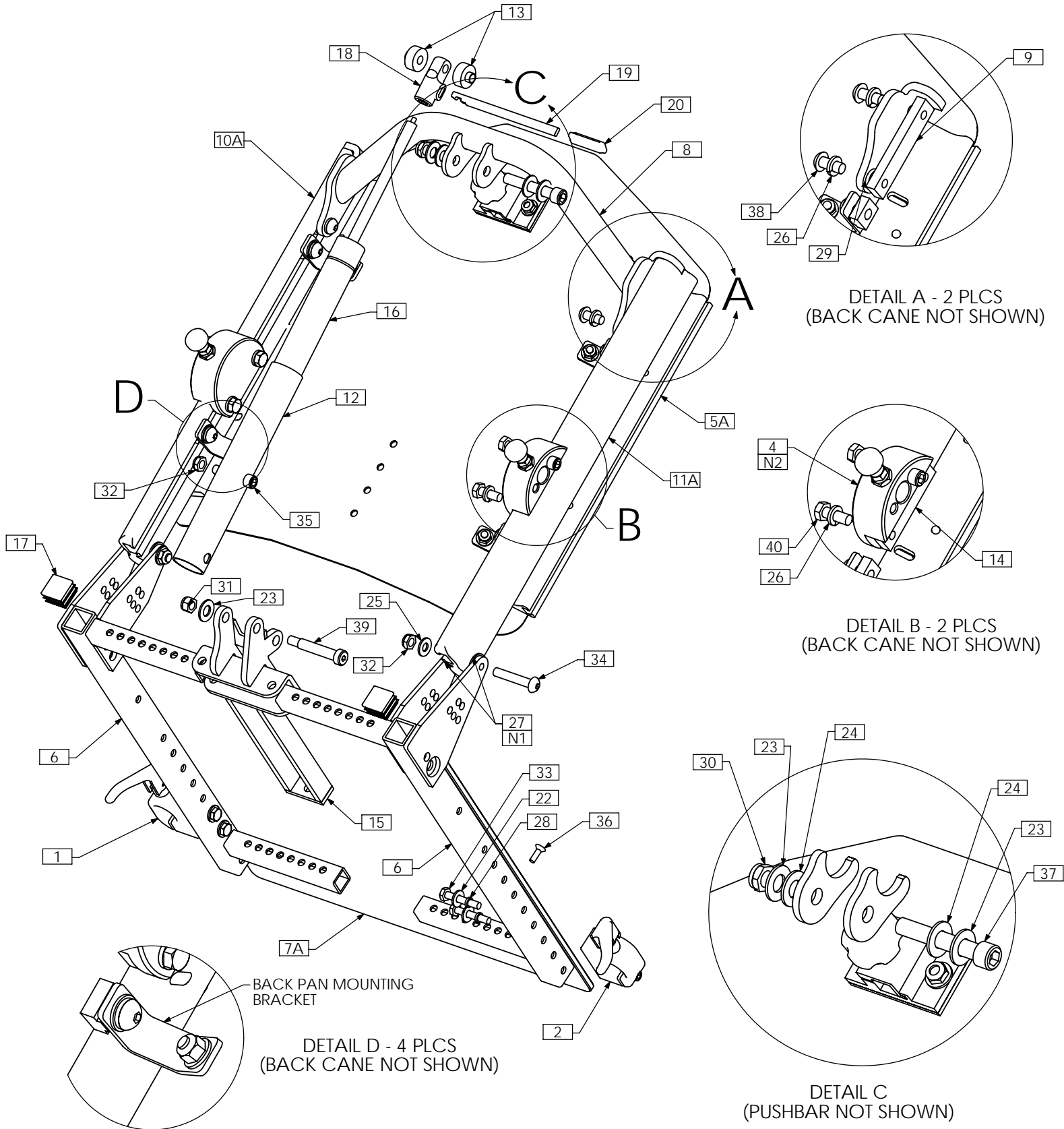
(USING A 6" ACTUATOR AND A 3/4" ROD-END, 48° TO -30° IS ACHIEVED)



- NOTES:
 1. N/S = NOT SHOWN
 2. SEE TRC0329 FOR EXTENDED REAR RECEIVER ASS'Y USED WITH LATERALS

ITEM NO.	QTY.	PART NO.	DESCRIPTION	ITEM NO.	QTY.	PART NO.	DESCRIPTION
1A	1	TRA0489	ACTUATOR, 5" STROKE	18	2	TRM0107	SQUARE TUBE CAP
1B	1	TRA0564	ACTUATOR, 6" STROKE	19 N/S	1	TRM0208	BACK FLAP, VARIOUS SIZES
2	1	TRC0243	FRONT ARMREST RECEIVER ASS'Y, LEFT	20 N/S	1	TRM0215	RECLINE ACTUATOR SHROUD, HELIX
3	1	TRC0244	FRONT ARMREST RECEIVER ASS'Y, RIGHT	21	1	TRH0005	BUSHING 0.375 I.D X 0.500 O.D X 0.625 LG
4A N/S	1	TRC0294	LEGREST RECEIVER SELECTION	22	1	TRH0034	SLOTTED SPRING, TENSION PIN 0.125 x 1.125
4B N/S	1	TRC0551	CENTER MOUNT LEGREST RECEIVER SELECTION	23	4	TRH0101	1/4" FLAT WASHER
5	2	TRC0329	REAR ARMREST RECEIVER ASS'Y	24	3	TRH0104	3/8" FLAT WASHER
6A	1	TRC0519	CURVED RIGID BACK, RECLINE	25	4	TRH0105	3/8" NYLON WASHER
6B N/S	1	TRC0336	RECESSED PLANAR BACK, RECLINE	26	2	TRH0107	5/16" FLAT WASHER
6C N/S	1	TRC0337	CONTOUR BACK, RECLINE	27	8	TRH0108	5/16" LOCK WASHER
7	1	TRC0407	SEAT SIDE FRAME SELECTION	28	4	TRH0109	5/16" NYLON WASHER
8	1	TRC0524	RELAY BOX MOUNT ASS'Y	29	4	TRH0113	1/4" HI COLLAR LOCK WASHER
9A	1	TRX0393	SEAT PAN 14"-18" WIDTHS	30	2	TRH0124	5/16" x 5/8"OD x 0.120" TH FLAT WASHER
9B N/S	1	TRX0394	SEAT PAN, 19"-25" WIDTHS	31	1	TRH0205	3/8-16 SHALLOW NYLOC NUT
10	1	TRX0640	PUSH BAR ASS'Y	32	1	TRH0206	5/16-18 NYLOC NUT
11	2	TRX0679	CLAMPING BAR	33	2	TRH0207	5/16-18 SHALLOW NYLOC NUT
12A	1	TRX0709	EXTRUDED BACK CANE ASS'Y, 19"-22", LEFT	34	4	TRH0301	1/4-20 x 1 1/2" HEX HEAD CAP SCREW
12B N/S	1	TRX0711	EXTRUDED BACK CANE ASS'Y, 23"-27", LEFT	35	2	TRH0321	5/16-18 x 1 3/4" BUTTON SOCKET CAP SCREW
13A	1	TRX0710	EXTRUDED BACK CANE ASS'Y, 19"-22", RIGHT	36	2	TRH0336	SET SCREW, 0.25 x 0.25
13B N/S	1	TRX0712	EXTRUDED BACK CANE ASS'Y, 23" - 27", RIGHT	37	4	TRH0339	#10-32 x 5/8" FLAT SOCKET CAP SCREW
14A	1	TRX1148-400	ROD END	38	1	TRH0348	3/8-16 x 2 1/4" SOCKET HEAD CAP SCREW GR8
14B	1	TRX1148-325	ROD END	39	4	TRH0421	5/16-18 x 3/4" BUTTON SOCKET CAP SCREW
15	2	TRX1561	CLAMPING BAR	40	1	TRH0443	3/8 x 1 3/4" SOCKET HEAD SHOULDER BOLT
16	2	TRX1669-0290	SPACER, 3/8 X 1	41	4	TRH0507	5/16-18 x 7/8" HEX HEAD CAP SCREW
17	1	TRX2460	PRECLINE BRACKET WLD				

TRC0505 - UPPER SEAT ASS'Y, MANUAL RECLINE, LOW-PRO CGT



NOTE: THIS ASSEMBLY DRAWING CAN BE USED AS A REFERENCE FOR STANDARD AND MEDIUM DEPTH APPLICATION MANUAL RECLINE UPPER SEAT ASSEMBLIES. SPECIAL PIVOT/MAXIMUM RECLINE AND LOW BACK SEAT SIDE FRAMES ARE NOT USED FOR LOW-PRO APPLICATIONS. REFER TO TRC0407 - SEAT SIDE SELECTION PAGE OF PARTS MANUAL

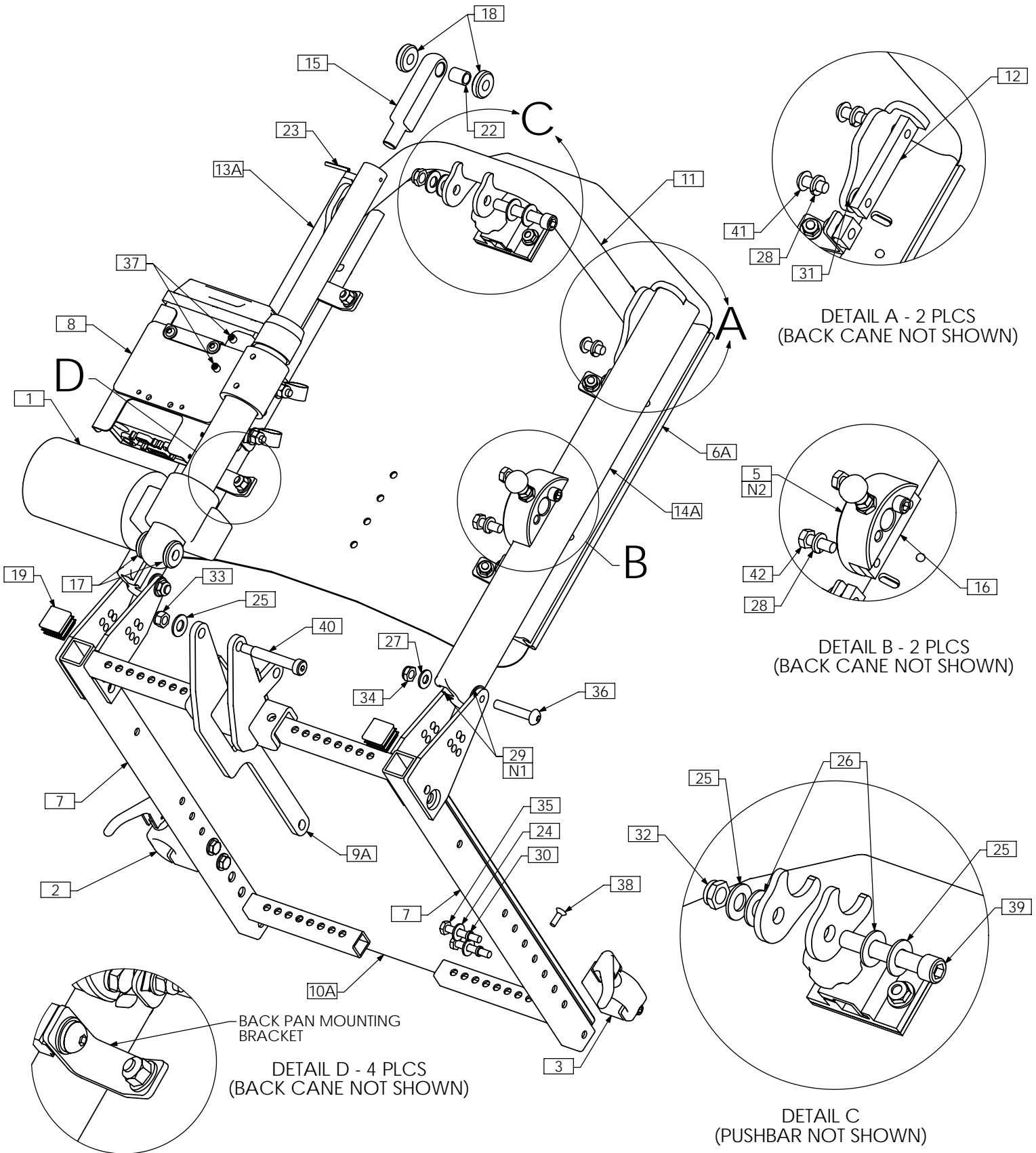
TRC0505 - UPPER SEAT ASS'Y, MANUAL RECLINE, LOW-PRO CGT

ITEM NO.	QTY.	PART NO.	DESCRIPTION
1	1	TRC0243	FRONT ARMREST RECEIVER ASS'Y, LEFT
2	1	TRC0244	FRONT ARMREST RECEIVER ASS'Y, RIGHT
3A N/S	1	TRC0294	LEGREST RECEIVER SELECTION
3B N/S	1	TRC0551	CENTER MOUNT LEGREST RECEIVER SELECTION
4	2	TRC0329	REAR ARMREST RECEIVER ASS'Y
5A	1	TRC0519	CURVED RIGID BACK, RECLINE
5B N/S	1	TRC0336	RECESSED PLANAR BACK, RECLINE
5C N/S	1	TRC0337	CONTOUR BACK, RECLINE
6	1	TRC0407	SEAT SIDE FRAME SELECTION
7A	1	TRX0393	SEAT PAN 14"-18" WIDTHS
7B N/S	1	TRX0394	SEAT PAN, 19"-25" WIDTHS
8	1	TRX0640	PUSH BAR ASS'Y
9	2	TRX0679	CLAMPING BAR
10A	1	TRX0709	EXTRUDED BACK CANE ASS'Y, 19"-22", LEFT
10B N/S	1	TRX0711	EXTRUDED BACK CANE ASS'Y, 23"-27", LEFT
11A	1	TRX0710	EXTRUDED BACK CANE ASS'Y, 19"-22", RIGHT
11B N/S	1	TRX0712	EXTRUDED BACK CANE ASS'Y, 23" - 27", RIGHT
12	1	TRX0837	STRUT HOUSING
13	2	TRX1506	STRUT SPACER
14	2	TRX1561	CLAMPING BAR
15	1	TRX2154	RECLINE BRACKET WLD
16	1	TRM0082	STRUT
17	2	TRM0107	SQUARE TUBE CAP
18	1	TRM0200	END BUSHING
19	1	TRM0201	HANDLE
20	1	TRM0202	HANDLE CAP
21 N/S	1	TRM0208	BACK FLAP, VARIOUS SIZES
22	4	TRH0101	¼" FLAT WASHER
23	3	TRH0104	3/8" FLAT WASHER
24	2	TRH0105	3/8" NYLON WASHER
25	2	TRH0107	5/16" FLAT WASHER
26	8	TRH0108	5/16" LOCK WASHER
27	4	TRH0109	5/16" NYLON WASHER
28	4	TRH0113	¼" HI COLLAR LOCK WASHER
29	2	TRH0124	5/16" x 5/8" OD x 0.120" TH FLAT WASHER
30	1	TRH0205	3/8-16 SHALLOW NYLOC NUT
31	1	TRH0206	5/16-18 NYLOC NUT
32	3	TRH0207	5/16-18 SHALLOW NYLOC NUT
33	4	TRH0301	¼-20 x 1½" HEX HEAD CAP SCREW
34	2	TRH0321	5/16-18 x 1¾" BUTTON SOCKET CAP SCREW
35	1	TRH0332	5/16-18 x 1½" SOCKET HEAD CAP SCREW GR8
36	4	TRH0339	#10-32 x 5/8" FLAT SOCKET CAP SCREW
37	1	TRH0348	3/8-16 x 2¼" SOCKET HEAD CAP SCREW GR8
38	4	TRH0421	5/16-18 x ¾" BUTTON SOCKET CAP SCREW
39	1	TRH0443	3/8 x 1¾" SOCKET HEAD SHOULDER BOLT
40	4	TRH0507	5/16-18 x 7/8" HEX HEAD CAP SCREW

NOTES:

1. N/S = NOT SHOWN
2. SEE TRC0329 FOR EXTENDED REAR RECEIVER ASS'Y USED WITH LATERALS

TRC0617 - UPPER SEAT ASS'Y, RECLINE-ONLY



NOTE: THIS ASSEMBLY DRAWING CAN BE USED AS A REFERENCE FOR STANDARD AND MEDIUM DEPTH APPLICATION RECLINE UPPER SEAT ASSEMBLIES. SPECIAL PIVOT/MAXIMUM RECLINE AND LOW BACK SEAT SIDE FRAMES ARE NOT USED FOR LOW-PRO APPLICATIONS. REFER TO TRC0407 - SEAT SIDE SELECTION PAGE OF PARTS MANUAL

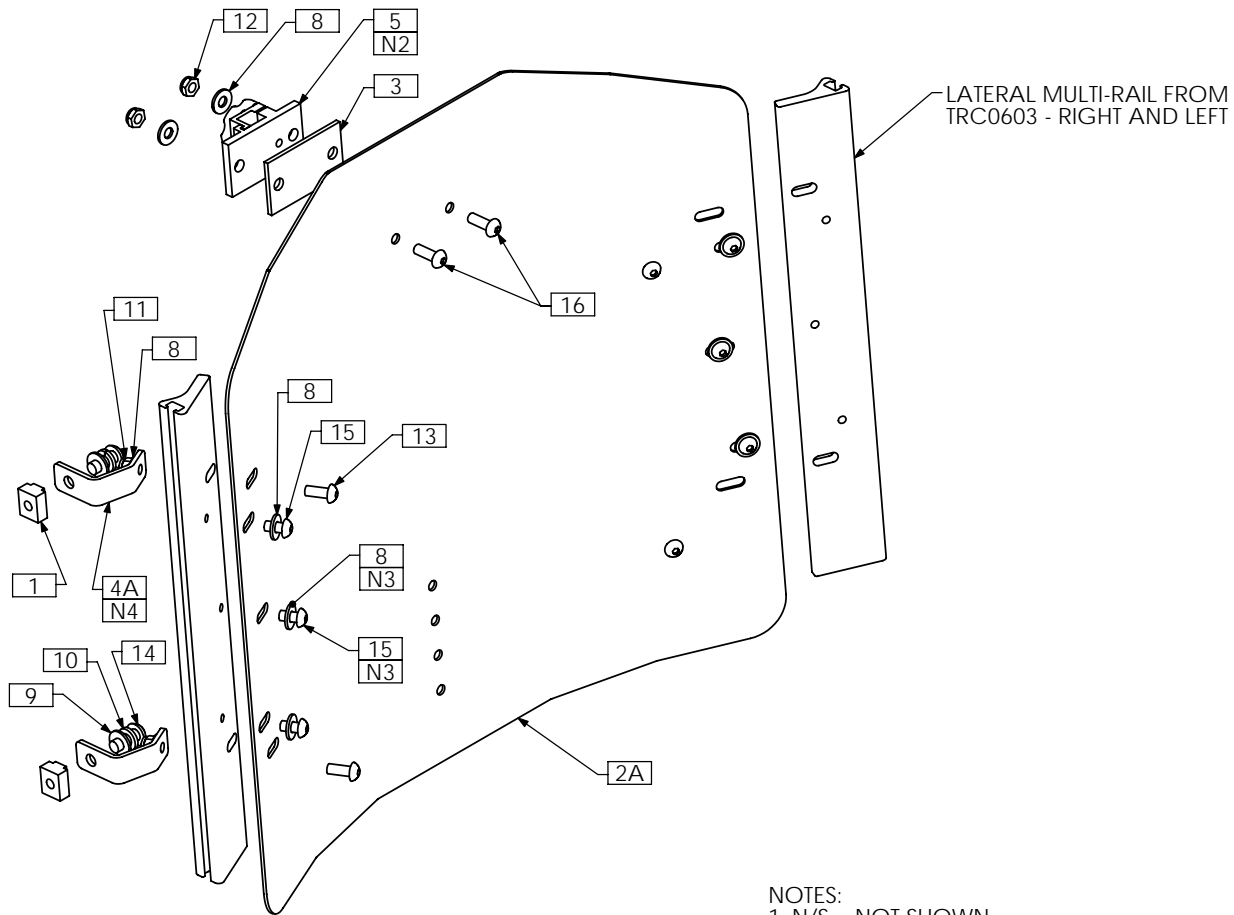
TRC0617 - UPPER SEAT ASS'Y, RECLINE-ONLY

ITEM NO.	QTY.	PART NO.	DESCRIPTION
1	1	TRA0489	ACTUATOR, 5" STROKE, STD END
2	1	TRC0243	FRONT ARMREST RECEIVER ASS'Y, LEFT
3	1	TRC0244	FRONT ARMREST RECEIVER ASS'Y, RIGHT
4A N/S	1	TRC0294	LEGREST RECEIVER SELECTION
4B N/S	1	TRC0551	CENTER MOUNT LEGREST RECEIVER SELECTION
5	2	TRC0329	REAR ARMREST RECEIVER ASS'Y
6A	1	TRC0519	CURVED RIGID BACK, RECLINE
6B N/S	1	TRC0336	RECESSED PLANAR BACK, RECLINE
6C N/S	1	TRC0337	CONTOUR BACK, RECLINE
7	1	TRC0407	SEAT SIDE FRAME SELECTION
8	1	TRC0524	RELAY BOX MOUNT ASS'Y
9A	1	TRX0169	RECLINE BRACKET ASS'Y
9B N/S	1	TRX1034	RECLINE BRACKET ASS'Y
9C N/S	1	TRX1151	RECLINE BRACKET ASS'Y
10A	1	TRX0393	SEAT PAN 14"-18" WIDTHS
10B N/S	1	TRX0394	SEAT PAN, 19"-25" WIDTHS
11	1	TRX0640	PUSH BAR ASS'Y
12	2	TRX0679	CLAMPING BAR
13A	1	TRX0709	EXTRUDED BACK CANE ASS'Y, 19"-22", LEFT
13B N/S	1	TRX0711	EXTRUDED BACK CANE ASS'Y, 23"-27", LEFT
14A	1	TRX0710	EXTRUDED BACK CANE ASS'Y, 19"-22", RIGHT
14B N/S	1	TRX0712	EXTRUDED BACK CANE ASS'Y, 23" - 27", RIGHT
15	1	TRX1148-388	ROD END
16	2	TRX1561	CLAMPING BAR
17	2	TRX1669-0237	SPACER, 3/8 X 1
18	2	TRX1669-0290	SPACER, 3/8 X 1
19	2	TRM0107	SQUARE TUBE CAP
20 N/S	1	TRM0208	BACK FLAP, VARIOUS SIZES
21 N/S	1	TRM0215	RECLINE ACTUATOR SHROUD, HELIX
22	1	TRH0005	BUSHING 0.375 I.D X 0.500 O.D X 0.625 LG
23	1	TRH0034	SLOTTED SPRING, TENSION PIN 0.125 x 1.125
24	4	TRH0101	¼" FLAT WASHER
25	3	TRH0104	3/8" FLAT WASHER
26	2	TRH0105	3/8" NYLON WASHER
27	2	TRH0107	5/16" FLAT WASHER
28	8	TRH0108	5/16" LOCK WASHER
29	4	TRH0109	5/16" NYLON WASHER
30	4	TRH0113	¼" HI COLLAR LOCK WASHER
31	2	TRH0124	5/16" x 5/8" OD x 0.120" TH FLAT WASHER
32	1	TRH0205	3/8-16 SHALLOW NYLOC NUT
33	1	TRH0206	5/16-18 NYLOC NUT
34	2	TRH0207	5/16-18 SHALLOW NYLOC NUT
35	4	TRH0301	¼-20 x 1½" HEX HEAD CAP SCREW
36	2	TRH0321	5/16-18 x 1¾" BUTTON SOCKET CAP SCREW
37	2	TRH0336	SET SCREW, 0.25 x 0.25
38	4	TRH0339	#10-32 x 5/8" FLAT SOCKET CAP SCREW
39	1	TRH0348	3/8-16 x 2¼" SOCKET HEAD CAP SCREW GR8
40	1	TRH0379	3/8 x 2" SOCKET HEAD SHOULDER BOLT
41	4	TRH0421	5/16-18 x ¾" BUTTON SOCKET CAP SCREW
42	4	TRH0507	5/16-18 x 7/8" HEX HEAD CAP SCREW

NOTES:

1. N/S = NOT SHOWN
2. SEE TRC0329 FOR EXTENDED REAR RECEIVER ASS'Y USED WITH LATERALS

TRC0519 - CURVED RIGID BACK, RECLINE, STEEL



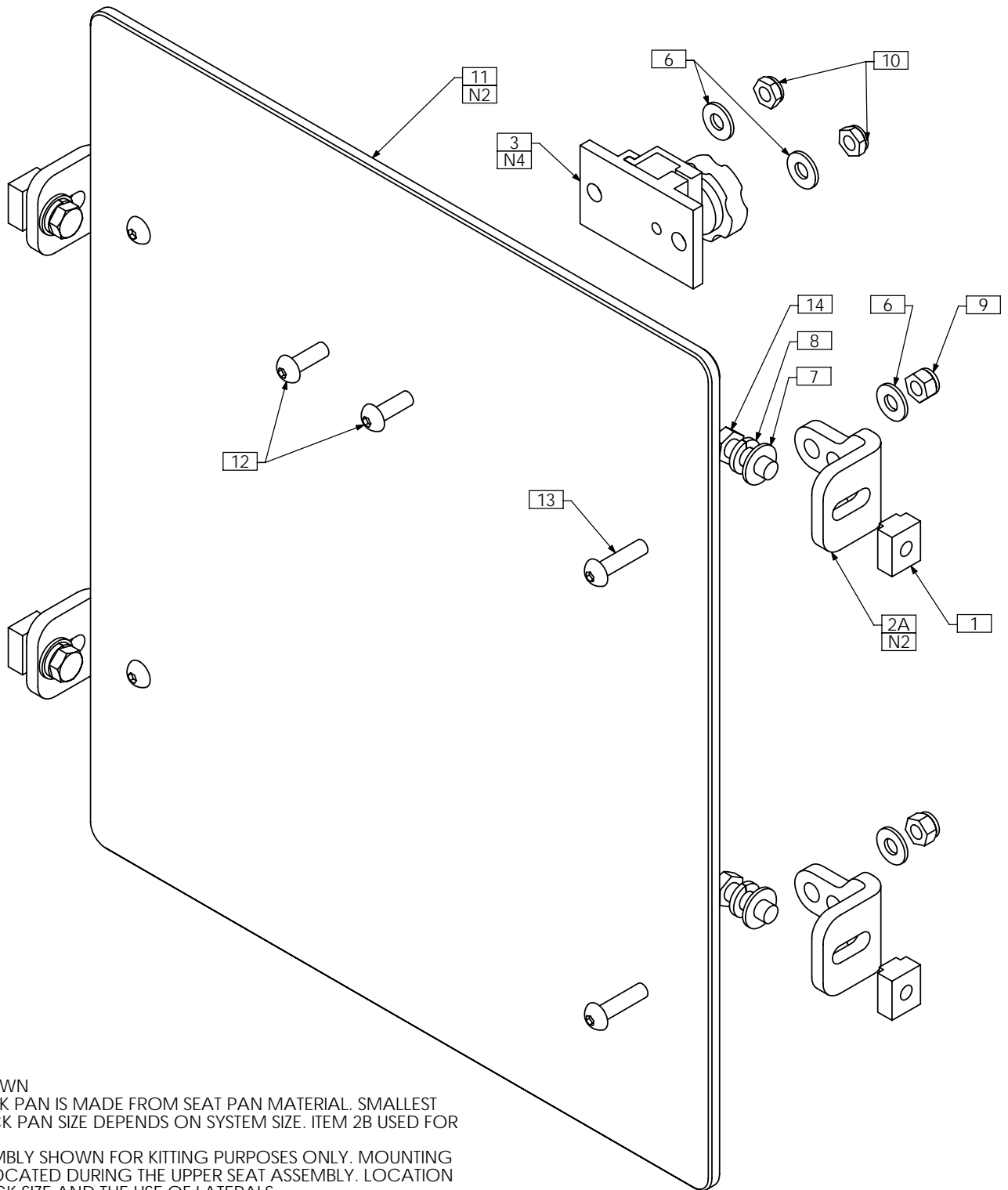
NOTES:

1. N/S = NOT SHOWN
2. TRM0036 NOT REQUIRED FOR ONYX HEADREST - SEE TRC0326
3. NOT REQUIRED FOR 12H AND 13H BACKS
4. USE ITEM 4B FOR SYSTEMS WITHOUT MULTI-RAILS

Steel Curved Back	20" High	19" High	18" High	17" High	16" High	15" High	14" High	13" High	12" High
21" Wide	TRX2632-2120	TRX2632-2119	TRX2632-2118	TRX2632-2117	TRX2632-2116	N/A	N/A	N/A	N/A
20" Wide	TRX2632-2020	TRX2632-2019	TRX2632-2018	TRX2632-2017	TRX2632-2016	TRX2632-2015	TRX2632-2014	N/A	N/A
19" Wide	TRX2632-1920	TRX2632-1919	TRX2632-1918	TRX2632-1917	TRX2632-1916	TRX2632-1915	TRX2632-1914	N/A	N/A
18" Wide	TRX2632-1820	TRX2632-1819	TRX2632-1818	TRX2632-1817	TRX2632-1816	TRX2632-1815	TRX2632-1814	TRX2636-1813	TRX2636-1812
17" Wide	TRX2632-1720	TRX2632-1719	TRX2632-1718	TRX2632-1717	TRX2632-1716	TRX2632-1715	TRX2632-1714	TRX2636-1713	TRX2636-1712
16" Wide	TRX2632-1620	TRX2632-1619	TRX2632-1618	TRX2632-1617	TRX2632-1616	TRX2632-1615	TRX2632-1614	TRX2636-1613	TRX2636-1612
15" Wide	TRX2632-1520	TRX2632-1519	TRX2632-1518	TRX2632-1517	TRX2632-1516	TRX2632-1515	TRX2632-1514	TRX2636-1513	TRX2636-1512
14" Wide	N/A	N/A	N/A	N/A	TRX3035-1416	TRX3035-1415	TRX3035-1414	TRX3034-1413	TRX3034-1412
13" Wide	N/A	N/A	N/A	N/A	TRX3037-1316	TRX3037-1315	TRX3037-1314	TRX3036-1313	TRX3036-1312
12" Wide	N/A	N/A	N/A	N/A	TRX3039-1216	TRX3039-1215	TRX3039-1214	TRX3038-1213	TRX3038-1212

ITEM NO.	QTY.	PART NO.	DESCRIPTION	ITEM NO.	QTY.	PART NO.	DESCRIPTION
1	4	TRX0571	T-NUT, 5/16-18	5	1	TRM0036	HEADREST CLAMP ASS'Y
2A	1	TRX2632	BACK PAN, 15W - 21W, 14H - 20H	6 N/S	1	TRS0029	CURVED STEEL BACK COVER
2B N/S	1	TRX2636	BACK PAN, 15W - 18W, 12H - 13H	7 N/S	1	TRS0051	CURVED STEEL BACK FOAM PAD
2C N/S	1	TRX3035	BACK PAN, 14W, 14H - 16H	8	12	TRH0101	1/4" FLAT WASHER
2D N/S	1	TRX3034	BACK PAN, 14W, 12H - 13H	9	4	TRH0107	5/16" FLAT WASHER
2E N/S	1	TRX3037	BACK PAN, 13W, 14H - 16H	10	4	TRH0108	5/16" LOCK WASHER
2F N/S	1	TRX3036	BACK PAN, 13W, 12H - 13H	11	4	TRH0201	1/4-20 NYLOC NUT
2G N/S	1	TRX3039	BACK PAN, 12W, 14H - 16H	12	2	TRH0202	1/4-20 SHALLOW NYLOC NUT
2H N/S	1	TRX3038	BACK PAN, 12W, 12H - 13H	13	4	TRH0308	1/4-20 x 5/8" BUTTON SOCKET CAP SCREW
3	1	TRX2685	SHIM	14	4	TRH0421	5/16-18 x 3/4" BUTTON SOCKET CAP SCREW
4A	4	TRX3187-02	RECLINE BRACKET	15	6	TRH0429	1/4-20 x 1/2" BUTTON SOCKET CAP SCREW
4B N/S	4	TRX3187-01	RECLINE BRACKET	16	2	TRH0445	1/4-20 x 3/4" BUTTON SOCKET CAP SCREW

TRC0336 - RECESSED PLANAR BACK, RECLINE

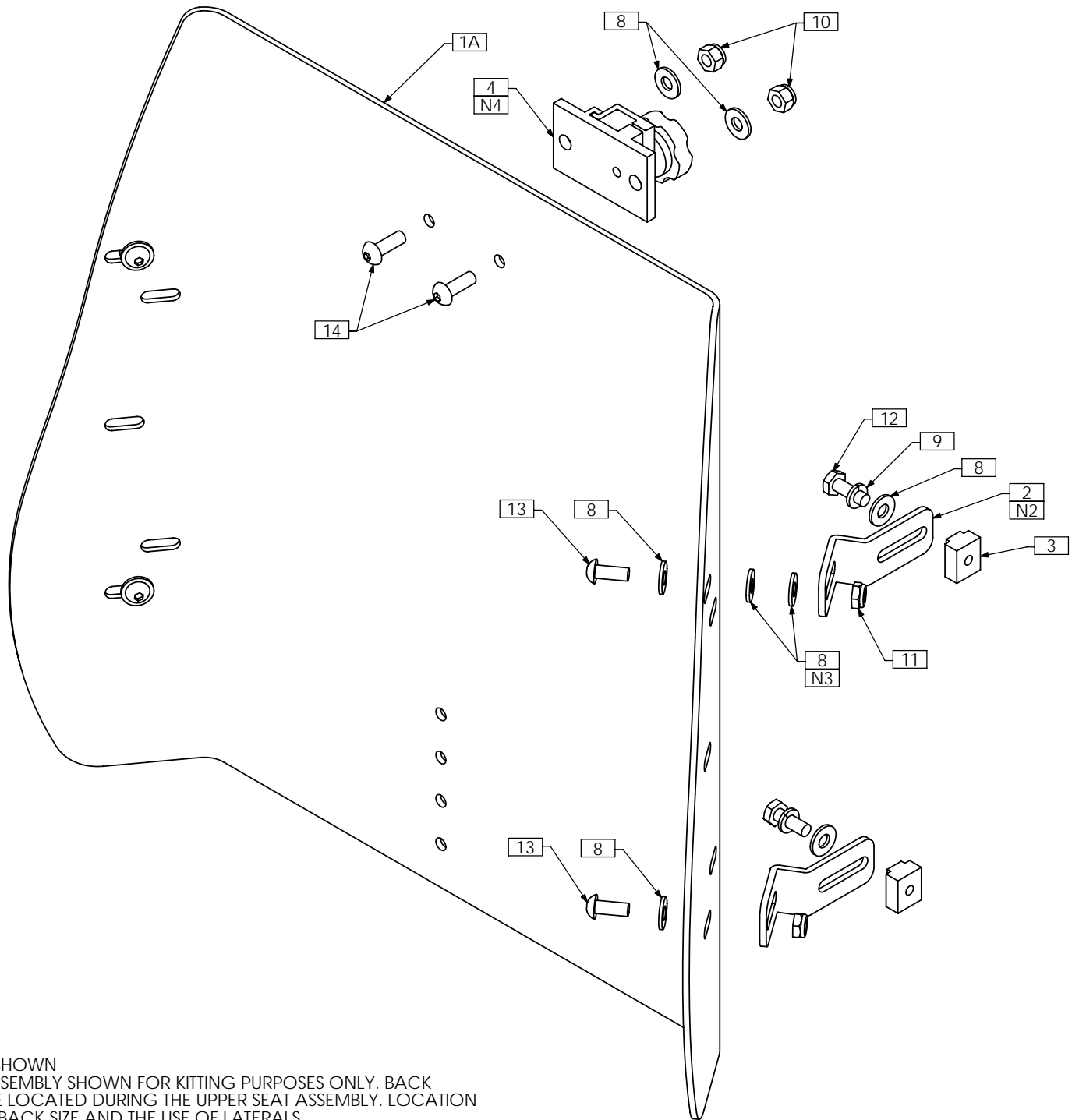


NOTES:

- 1. N/S = NOT SHOWN
- 2. RECESSED BACK PAN IS MADE FROM SEAT PAN MATERIAL. SMALLEST SIZE SHOWN. BACK PAN SIZE DEPENDS ON SYSTEM SIZE. ITEM 2B USED FOR LARGER BACKS
- 3. PARTS IN ASSEMBLY SHOWN FOR KITTING PURPOSES ONLY. MOUNTING BRACKETS ARE LOCATED DURING THE UPPER SEAT ASSEMBLY. LOCATION DEPENDS ON BACK SIZE AND THE USE OF LATERALS
- 4. TRM0036 NOT REQUIRED FOR ONYX HEADREST - SEE TRC0326

ITEM NO.	QTY.	PART NO.	DESCRIPTION	ITEM NO.	QTY.	PART NO.	DESCRIPTION
1	4	TRX0571	T-NUT, 5/16-18	8	4	TRH0108	5/16" LOCK WASHER
2A	4	TRX0925-01	MOUNTING BRACKET	9	4	TRH0201	¼-20 NYLOC NUT
2B N/S	4	TRX0925-02	MOUNTING BRACKET	10	2	TRH0202	¼-20 SHALLOW NYLOC NUT
3	1	TRM0036	HEADREST CLAMP ASS'Y	11	1	TRX0393	SEAT PAN 14"-18" WIDTHS
4 N/S	1	TRS0027	FLAT BACK COVER	12	2	TRH0445	¼-20 x ¾" BUTTON SOCKET CAP SCREW
5 N/S	1	TRS0050	FLAT BACK FOAM	13	4	TRH0450	¼-20 x 1" BUTTON SOCKET CAP SCREW
6	6	TRH0101	¼" FLAT WASHER	14	4	TRH0507	5/16-18 x 7/8" HEX HEAD CAP SCREW
7	4	TRH0107	5/16" FLAT WASHER				

TRC0337 - CONTOUR BACK, RECLINE

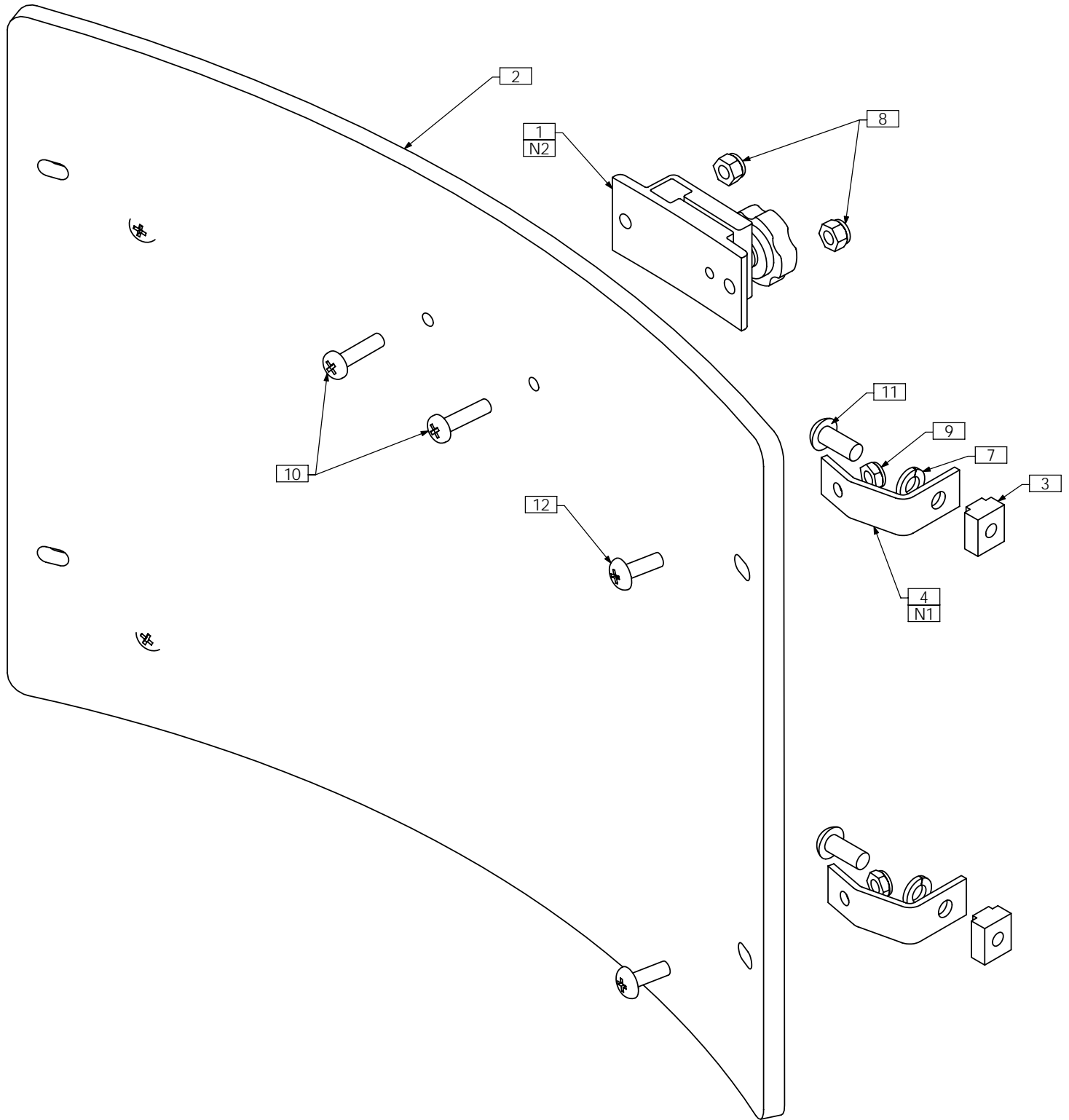


NOTES:

- 1. N/S = NOT SHOWN
- 2. PARTS IN ASSEMBLY SHOWN FOR KITTING PURPOSES ONLY. BACK HANGERS ARE LOCATED DURING THE UPPER SEAT ASSEMBLY. LOCATION DEPENDS ON BACK SIZE AND THE USE OF LATERALS
- 3. WASHERS USED TO PROVIDE CLEARANCE FROM BACK PAN EDGE TRIM. USE AS REQUIRED
- 4. TRM0036 NOT REQUIRED FOR ONYX HEADREST - SEE TRC0326

ITEM NO.	QTY.	PART NO.	DESCRIPTION	ITEM NO.	QTY.	PART NO.	DESCRIPTION
1A	1	TRX1195	CONTOUR BACK PAN, 17H	7 N/S	1	TRS0022	CONTOUR BACK CUSHION ASS'Y, ONYX
1B N/S	1	TRX2741	CONTOUR BACK PAN, 15H	8	14	TRH0101	¼" FLAT WASHER
1C N/S	1	TRX2740	CONTOUR BACK PAN, 12H	9	4	TRH0115	¼" LOCK WASHER
2	4	TRX1196	BACK HANGER	10	2	TRH0201	¼-20 NYLOC NUT
3	4	TRX1230	T-NUT, 1/4-20	11	4	TRH0202	¼-20 SHALLOW NYLOC NUT
4	1	TRM0036	HEADREST CLAMP ASS'Y	12	4	TRH0306	¼-20 x ¾" HEX HEAD CAP SCREW
5 N/S	5ft	TRM0568	RUBBER EDGE TRIM, SMALL PROFILE	13	4	TRH0308	¼-20 x 5/8" BUTTON SOCKET CAP SCREW
6 N/S	1	TRS0020	CONTOUR BACK CUSHION ASS'Y	14	2	TRH0445	¼-20 x ¾" BUTTON SOCKET CAP SCREW

TRC0335 - CURVED RIGID BACK, RECLINE



NOTES:
 1. PARTS IN ASSEMBLY SHOWN FOR KITTING PURPOSES ONLY. MOUNTING BRACKETS ARE LOCATED DURING THE UPPER SEAT ASSEMBLY. LOCATION DEPENDS ON BACK SIZE AND THE USE OF LATERALS
 2. TRC0229 NOT REQUIRED FOR ONYX HEADREST - SEE TRC0326

ITEM NO.	QTY.	PART NO.	DESCRIPTION	ITEM NO.	QTY.	PART NO.	DESCRIPTION
1	1	TRC0229	HEADREST CLAMP ASS'Y	7	4	TRH0108	5/16" LOCK WASHER
2	1	TRX0429	BACK PAN	8	2	TRH0201	1/4-20 NYLOC NUT
3	4	TRX0571	T-NUT, 5/16-18	9	4	TRH0202	1/4-20 SHALLOW NYLOC NUT
4	4	TRX0910	RECLINE BACK MOUNTING BRACKET	10	2	TRH0355	1/4-20 x 1" PHILLIPS TRUSS MACHINE SCREW
5 N/S	1	TRS0027	FLAT BACK COVER	11	4	TRH0421	5/16-18 x 3/4" BUTTON SOCKET CAP SCREW
6 N/S	1	TRS0050	FLAT BACK FOAM	12	4	TRH0467	1/4-20 x 3/4" PHILLIPS TRUSS MACHINE SCREW