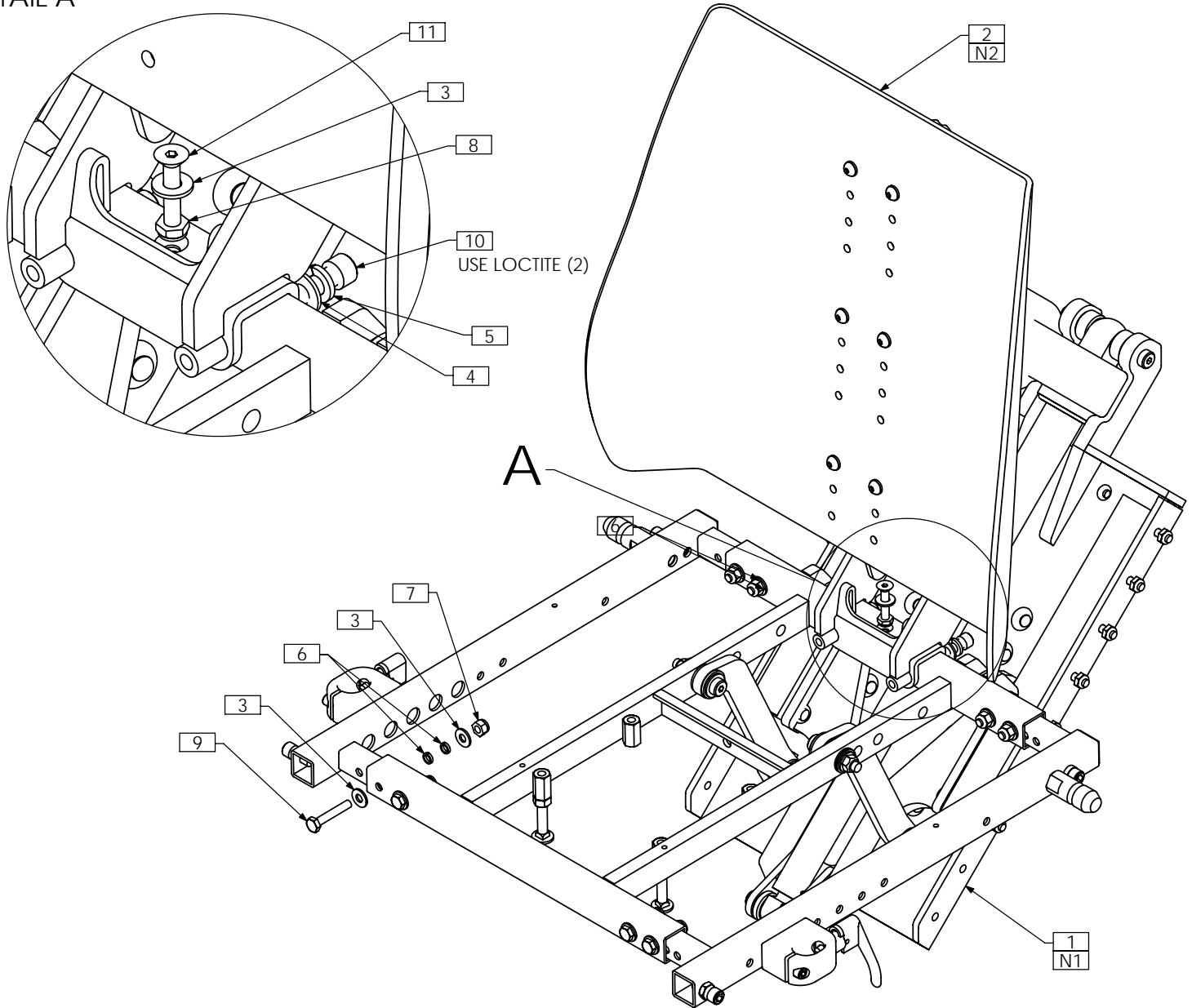


UPPER SEATING SINGLE POST BACK



TRC0611 - MAIN ASS'Y, ULTRA LOW CGT, SINGLE POST BACK

DETAIL A

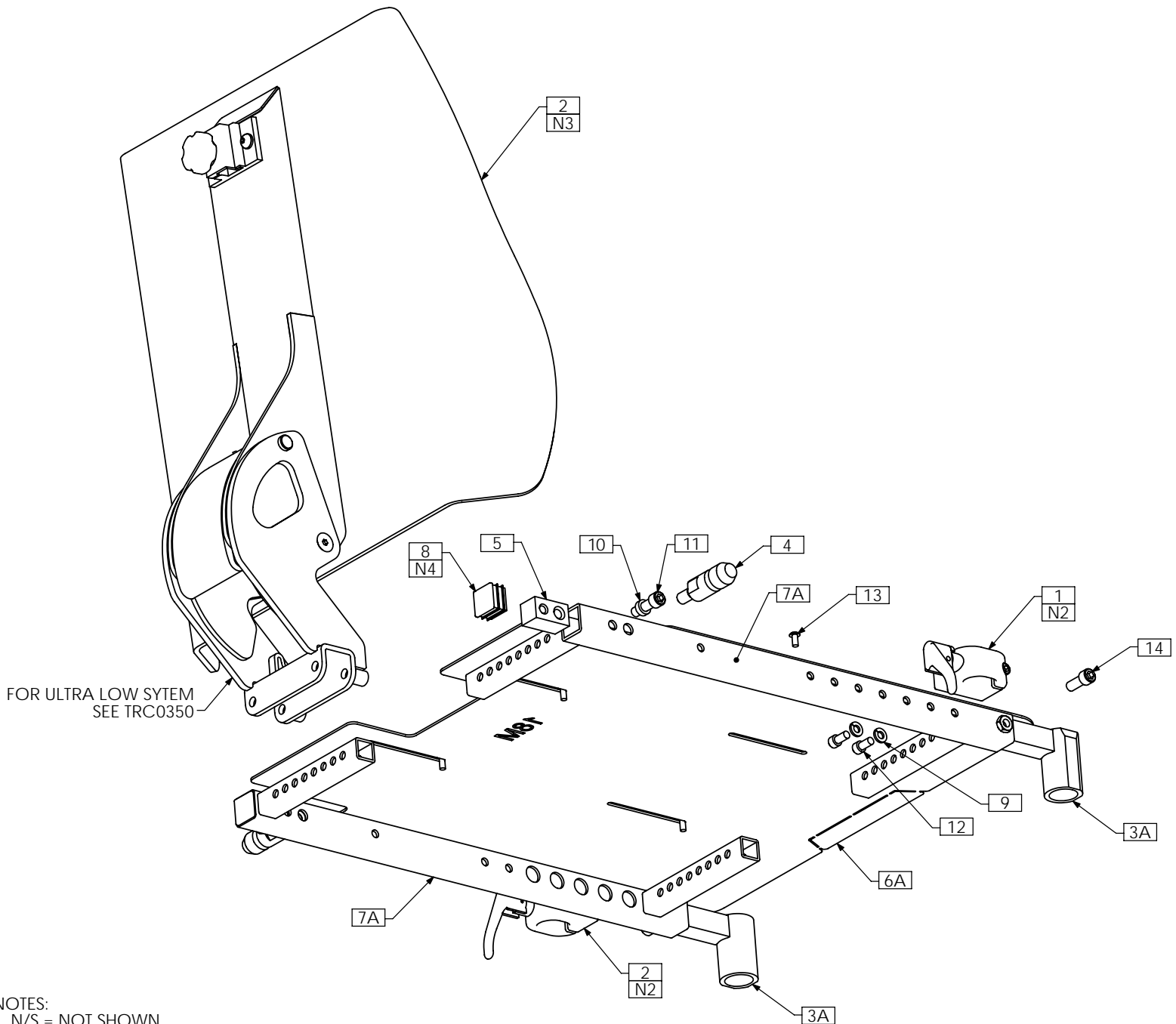


NOTES:

1. IMPORTANT: FOR SINGLE POST BACK APPLICATIONS, ULTRA LOW SYSTEM MUST BE LIMITED TO 45° TILT - REFER TO TRC0557. SHOWN WITH STANDARD DEPTH SEAT FRAME
2. ENSURE PROPER PIVOT MOUNT WLD IS USED FOR ULTRA LOW - TRX3337

ITEM NO.	QTY.	PART NO.	DESCRIPTION
1	1	TRC0557	POSITIONING SYSTEM, 7" SHIFT
2	1	TRC0553	UPPER SEAT ASS'Y, SINGLE POST BACK
3	17	TRH0101	¼" FLAT WASHER
4	2	TRH0107	5/16" FLAT WASHER
5	2	TRH0108	5/16" LOCK WASHER
6	16	TRH0113	¼" HI COLLAR LOCK WASHER
7	8	TRH0201	¼-20 NYLOC NUT
8	1	TRH0202	¼-20 SHALLOW NYLOC NUT
9	8	TRH0301	¼-20 x 1½" HEX HEAD CAP SCREW
10	2	TRH0358	5/16-18 x 2" SOCKET HEAD CAP SCREW GR8
11	1	TRH0377	¼-20 x 1½" FLAT SOCKET CAP SCREW

TRC0553 - UPPER SEAT ASS'Y, SINGLE POST BACK, ADJUSTABLE SEAT DEPTH



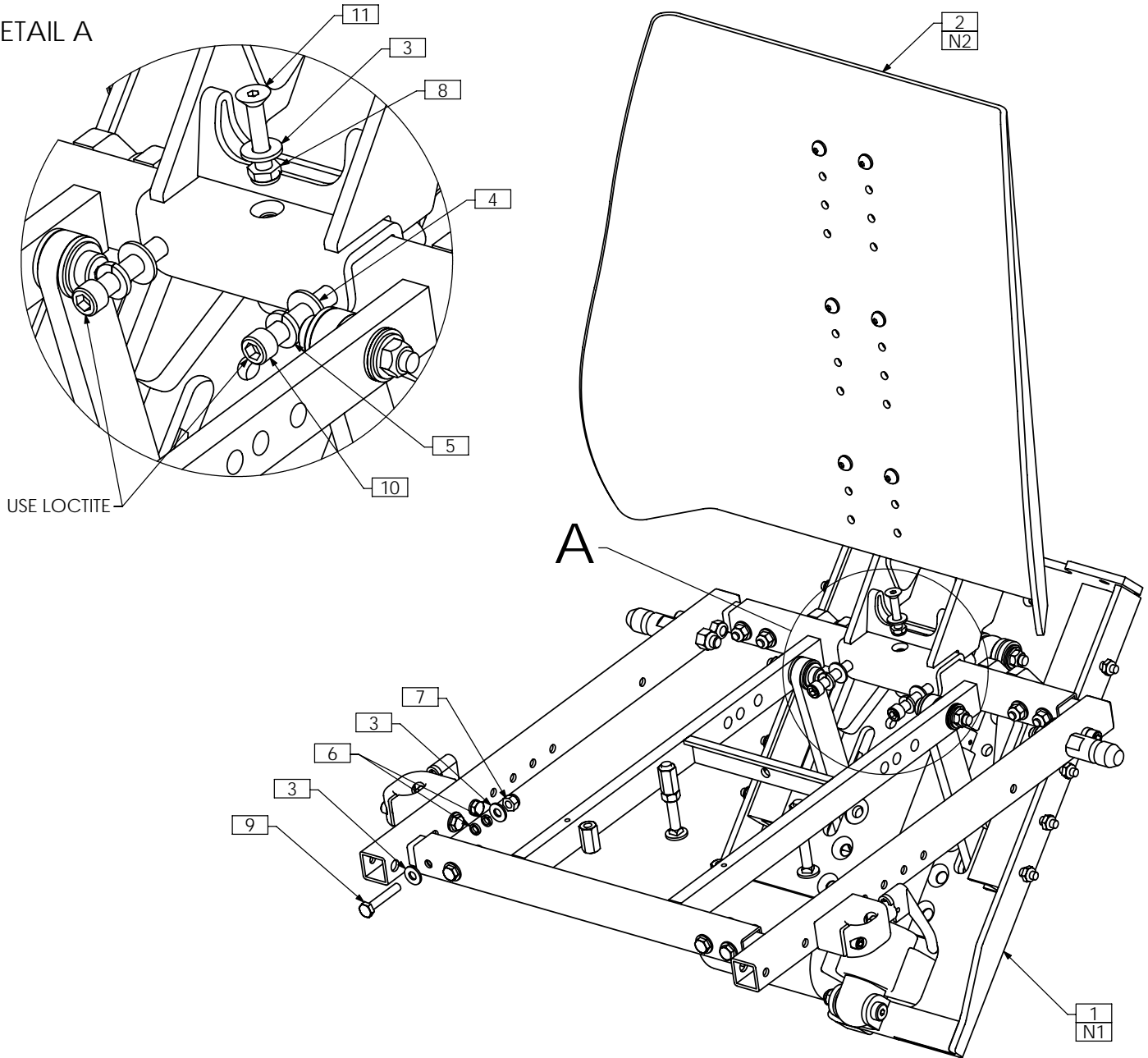
NOTES:

1. N/S = NOT SHOWN
2. FOR SOME SUPER LOW BASE APPLICATIONS, THE ARMREST RECEIVERS WILL BE MOUNTED UPSIDE DOWN ON THE OPPOSITE SIDES SO THAT THE LEVERS WILL POINT UP WHEN ENGAGED TO AVOID COLLIDING WITH THE BASE COWL
3. SHOWN FOR KIT ONLY. FOR FASTENING HARDWARE, SEE TRC0363 FOR CGT APPLICATIONS AND TRC0364 FOR SUPER LOW APPLICATIONS
4. ITEM 8 NOT USED WITH MEDIUM DEPTH SEAT SIDE FRAMES

ITEM NO.	QTY.	PART NO.	DESCRIPTION	ITEM NO.	QTY.	PART NO.	DESCRIPTION
1	1	TRC0126	FRONT ARMREST RECEIVER ASS'Y, RIGHT	7A	2	TRX3414	SEAT SIDE WLD
2	1	TRC0127	FRONT ARMREST RECEIVER ASS'Y, LEFT	7B N/S	2	TRX3413	MEDIUM SEAT SIDE WLD
2	1	TRC0350	SINGLE POST BACK ASS'Y	8	2	TRM0107	SQUARE TUBE CAP
3A	1	TRC0535	LEGREST RECEIVER SELECTION	9	4	TRH0115	¼" LOCK WASHER
3B N/S	1	TRC0552	CENTER MOUNT LEGREST RECEIVER SELECTION	10	2	TRH0135	0.32"ID x ½"OD x 0.170" NYLON WASHER
4	2	TRX1722	SHORT MOUNTING PIN	11	2	TRH0317	5/16-18 x 1" SOCKET HEAD CAP SCREW GR8
5	2	TRX1742	MOUNTING PIN INSERT	12	4	TRH0459	¼-20 x ½" SOCKET HEAD CAP SCREW GR8
6A	1	TRX3262	SEAT PAN, 16DP - 19DP	13	6	TRH0475	#10-32 x 3/8" BUTTON SOCKET CAP SCREW
6B N/S	1	TRX3261	SEAT PAN, 14DP - 17DP	14	2	TRH0517	5/16-24 x ¾" SOCKET HEAD CAP SCREW GR8
6C N/S	1	TRX3357	SEAT PAN, 19DP - 22DP				

TRC0417 - MAIN ASS'Y, LOW-PRO CGT, SINGLE POST BACK

DETAIL A

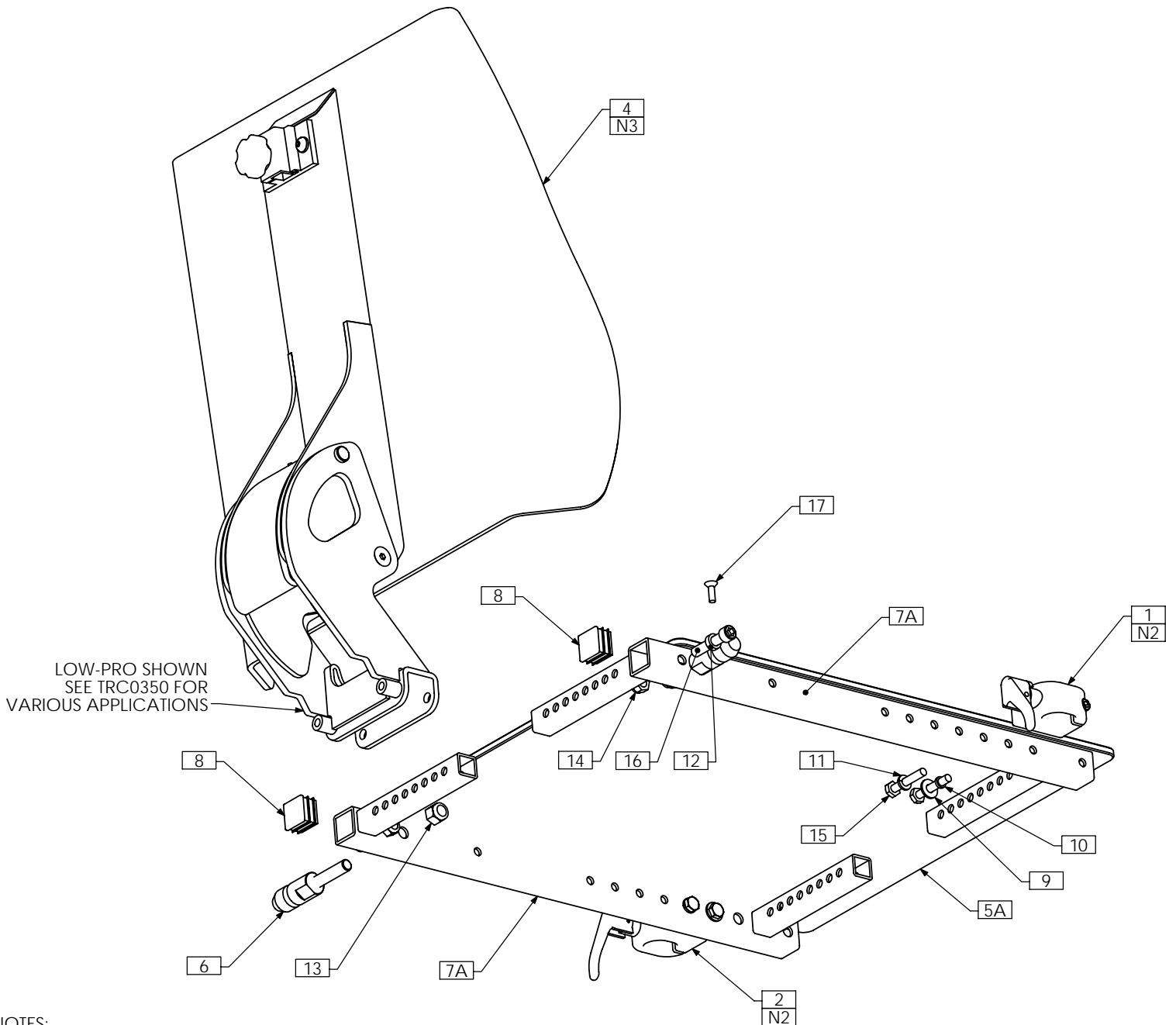


NOTES:

1. IMPORTANT: FOR SINGLE POST BACK APPLICATIONS, LOW-PRO SYSTEM MUST BE LIMITED TO 45° TILT - REFER TO TRC0416. SHOWN WITH STANDARD DEPTH SEAT FRAME
2. ENSURE PROPER PIVOT MOUNT WLD IS USED FOR LOW-PRO - TRX2349

ITEM NO.	QTY.	PART NO.	DESCRIPTION
1	1	TRC0416	POSITIONING SYSTEM
2	1	TRC0362	UPPER SEAT ASS'Y, SINGLE POST BACK
3	17	TRH0101	¼" FLAT WASHER
4	2	TRH0107	5/16" FLAT WASHER
5	2	TRH0108	5/16" LOCK WASHER
6	16	TRH0113	¼" HI COLLAR LOCK WASHER
7	8	TRH0201	¼-20 NYLOC NUT
8	1	TRH0202	¼-20 SHALLOW NYLOC NUT
9	8	TRH0301	¼-20 x 1½" HEX HEAD CAP SCREW
10	2	TRH0367	5/16-18 x 2¼" SOCKET HEAD CAP SCREW GR8
11	1	TRH0377	¼-20 x 1½" FLAT SOCKET CAP SCREW

TRC0362 - UPPER SEAT ASS'Y, SINGLE POST BACK



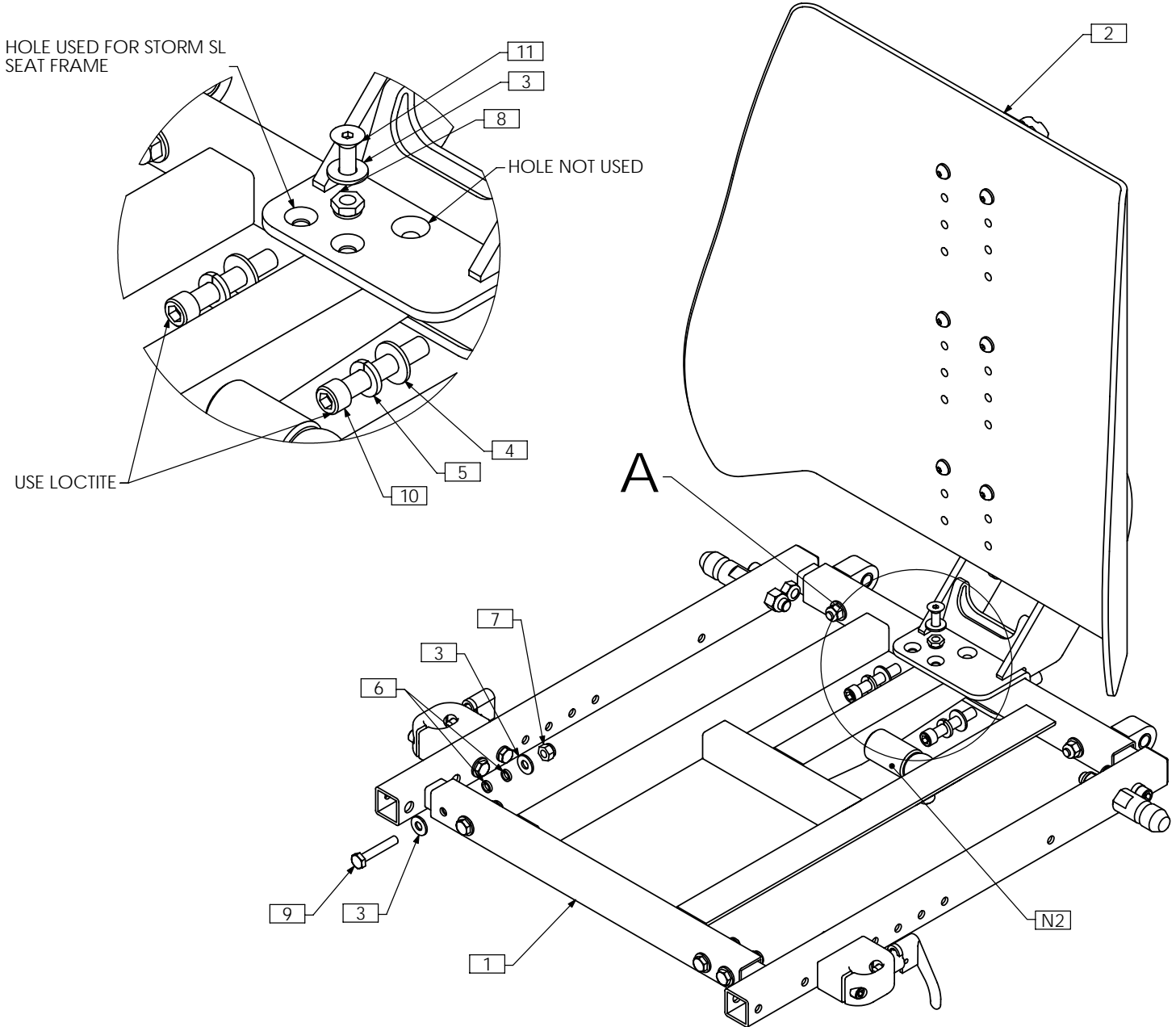
NOTES:

1. N/S = NOT SHOWN
2. FOR SOME SUPER LOW BASE APPLICATIONS, THE ARMREST RECEIVERS WILL BE MOUNTED UPSIDE DOWN ON THE OPPOSITE SIDES SO THAT THE LEVERS WILL POINT UP WHEN ENGAGED TO AVOID COLLIDING WITH THE BASE COWL
3. SHOWN FOR KIT ONLY. FOR FASTENING HARDWARE, SEE TRC0363 FOR CGT APPLICATIONS AND TRC0364 FOR SUPER LOW APPLICATIONS

ITEM NO.	QTY.	PART NO.	DESCRIPTION	ITEM NO.	QTY.	PART NO.	DESCRIPTION
1	1	TRC0126	FRONT ARMREST RECEIVER ASS'Y, RIGHT	8	2	TRM0107	SQUARE TUBE CAP
2	1	TRC0127	FRONT ARMREST RECEIVER ASS'Y, LEFT	9	2	TRH0101	¼" FLAT WASHER
3A N/S	1	TRC0294	LEGREST RECEIVER SELECTION	10	2	TRH0113	¼" HI COLLAR LOCK WASHER
3B N/S	1	TRC0551	CENTER MOUNT LEGREST RECEIVER SELECTION	11	2	TRH0115	¼" LOCK WASHER
4	1	TRC0350	SINGLE POST BACK ASS'Y	12	2	TRH0135	0.32"ID x ½"OD x 0.170" NYLON WASHER
5A	1	TRX0393	SEAT PAN 14"-18" WIDTHS	13	2	TRH0204	3/8-16 NYLOC NUT
5B N/S	1	TRX0394	SEAT PAN, 19"-25" WIDTHS	14	2	TRH0206	5/16-18 NYLOC NUT
6	2	TRX1361	MOUNTING PIN	15	4	TRH0301	¼"-20 x 1½" HEX HEAD CAP SCREW
7A	2	TRX1774	SIDE SEAT WLD	16	2	TRH0332	5/16-18 x 1½" SOCKET HEAD CAP SCREW GR8
7B N/S	2	TRX2492	MEDIUM SEAT SIDE WLD	17	4	TRH0339	#10-32 x 5/8" FLAT SOCKET CAP SCREW

TRC0364 - MAIN ASS'Y, SL/SP, SINGLE POST BACK

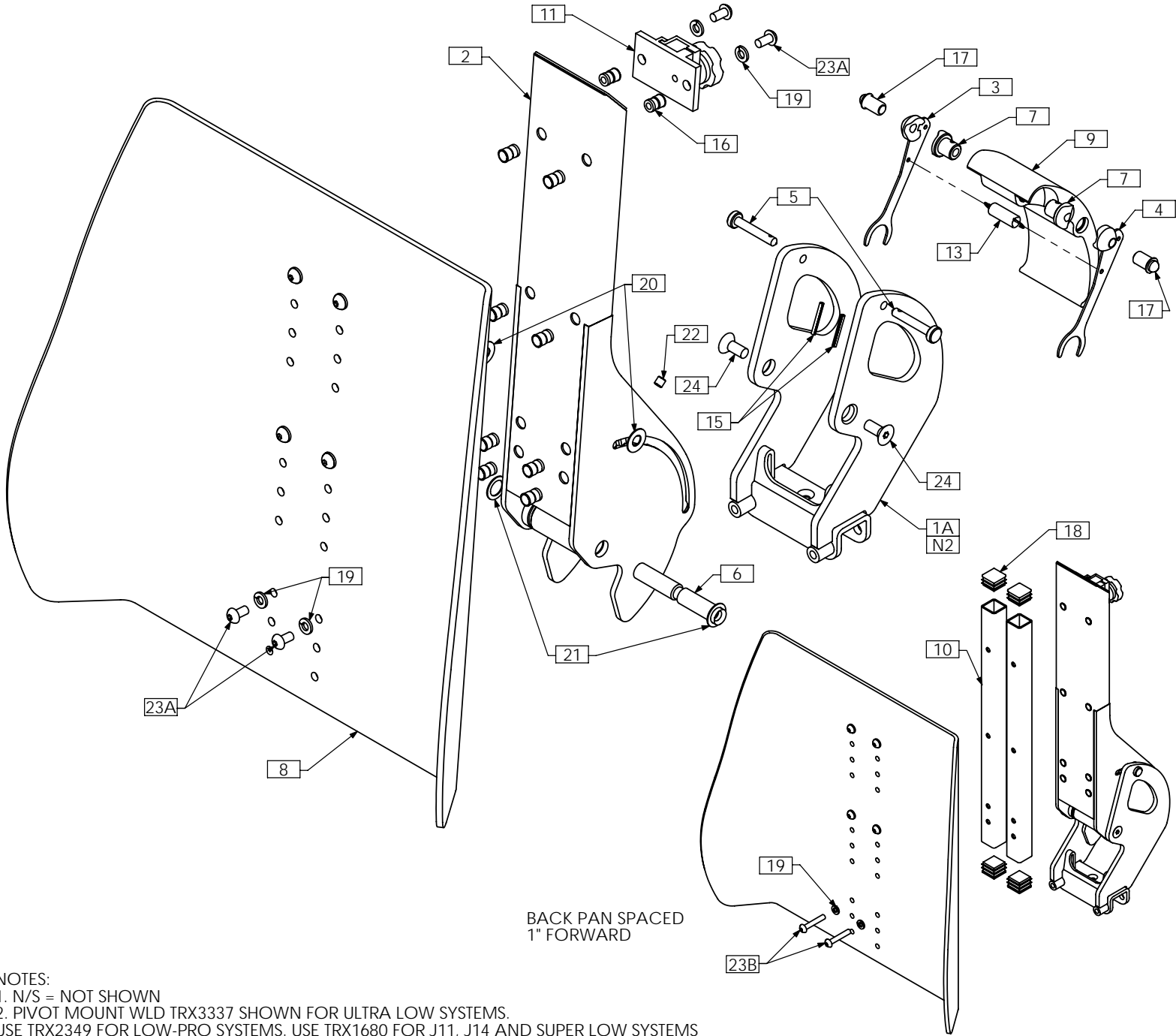
DETAIL A



- NOTES:
 1. N/S = NOT SHOWN
 2. REFER TO TRC0189 FOR SPECIFIC BASE ROD END/SPACER CONFIGURATIONS AND ROD END HARDWARE
 3. SEAT PAN NOT SHOWN

ITEM NO.	QTY.	PART NO.	DESCRIPTION	ITEM NO.	QTY.	PART NO.	DESCRIPTION
1	1	TRC0189	SEAT FRAME ASS'Y	7	6	TRH0201	¼-20 NYLOC NUT
2	1	TRC0362	UPPER SEAT ASS'Y, SINGLE POST BACK	8	1	TRH0202	¼-20 SHALLOW NYLOC NUT
3	13	TRH0101	¼" FLAT WASHER	9	6	TRH0301	¼-20 x 1½" HEX HEAD CAP SCREW
4	2	TRH0107	5/16" FLAT WASHER	10	2	TRH0315	5/16-18 x 1¾" SOCKET HEAD CAP SCREW GR8
5	2	TRH0108	5/16" LOCK WASHER	11	1	TRH0409	¼-20 x ¾" FLAT SOCKET CAP SCREW
6	12	TRH0113	¼" HI COLLAR LOCK WASHER				

TRC0350 - SINGLE POST BACK ASS'Y



NOTES:
 1. N/S = NOT SHOWN
 2. PIVOT MOUNT WLD TRX3337 SHOWN FOR ULTRA LOW SYSTEMS.
 USE TRX2349 FOR LOW-PRO SYSTEMS. USE TRX1680 FOR J11, J14 AND SUPER LOW SYSTEMS

ITEM NO.	QTY.	PART NO.	DESCRIPTION	ITEM NO.	QTY.	PART NO.	DESCRIPTION
1A	1	TRX3337	PIVOT MOUNT WLD	13	1	TRM0494	EXTENSION SPRING
1B N/S	1	TRX2349	PIVOT MOUNT WLD	14A N/S	1	TRS0020	CONTOUR BACK CUSHION ASS'Y
1C N/S	1	TRX1680	PIVOT MOUNT WLD	14B N/S	1	TRS0022	CONTOUR BACK CUSHION ASS'Y, ONYX
2	1	TRX1684	PIVOT BACK WLD	15	2	TRH0003	SPLIT PIN
3	1	TRX1690	CAM WLD, RIGHT	16	10	TRH0054	1/4-20 THREADED INSERT
4	1	TRX1691	CAM WLD, LEFT	17	2	TRH0059	BULLET PLUNGER
5	2	TRX1695	CAM PIN	18	4	TRM0107	SQUARE TUBE CAP
6	1	TRX1696	PIVOT PIN	19	8	TRH0115	1/4" LOCK WASHER
7	2	TRX1702	CAM INSERT	20	2	TRH0132	0.35"ID x 3/4"OD x 0.032" NYLON WASHER
8	1	TRX1809	BACK PAN, RECESSED	21	2	TRH0136	1/2"ID x 3/4"OD x 0.032" NYLON WASHER
9	1	TRX2467	LOCKING HANDLE	22	1	TRH0336	SET SCREW, 0.25 x 0.25
10	2	TRX2905	SPACER POST	23A	8	TRH0429	1/4-20 x 1/2" BUTTON SOCKET CAP SCREW
11	1	TRM0036	HEADREST CLAMP ASS'Y	23B	6	TRH0420	1/4-20 x 1 1/2" BUTTON SOCKET CAP SCREW
12 N/S	5ft	TRM0306	RUBBER EDGE TRIM	24	2	TRH0448	5/16-18 x 3/4" FLAT SOCKET CAP SCREW