

HEAD/NECK PADS



OTTO BOCK PAD

OPSH- S (SMALL PAD ONLY)

OPSH- L (LARGE PAD ONLY)

- Easy to clean self skinning polyurethane foam
- Anatomically shaped to provide lateral flexion control
- Small: 7"/17.8cm wide x 5"/12.7cm high
- Large: 9"/23cm wide x 6"/15.2cm high



STANDARD PAD

SPSH (PAD ONLY)

- Easy to clean self skinning polyurethane foam
- Gentle lateral contouring
- 6½"/16.5cm wide x 7"/17.8cm high



STEALTH COMFORT PLUS

STSH- XS (EXTRA SMALL PAD ONLY)

STSH- S (SMALL PAD ONLY)

STSH- L (LARGE PAD ONLY)

STSH- N (NINO PAD ONLY)

- Soft, comfortable layered foam on coated metal shell
- Removable, washable cover
- 8"/20cm, 10"/25.4cm or 14"/35.5cm wide x 6"/15.2cm high
- Niño Comfort: 6"/15.2cm wide x 3¾"/9.5cm high

HEAD/NECK SUPPORT HARDWARE OPTIONS



STEALTH "WORLD'S BEST"
WBHU (HARDWARE ONLY)

- Dual pivot balls for pad orientation
- Depth adjustable through dual link system
- Height adjustable
- Includes mounting clamp for attachment to back with latch style release for headrest removal



MULTI-AXIS

MAHU (HARDWARE ONLY)

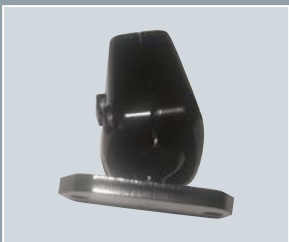
- Dual pivot balls for pad orientation
- Depth adjustable through horizontal slide bar
- Height adjustable
- Includes mounting clamp for attachment to back with knob style release for headrest removal



ONYX AUTO STYLE PAD

OPSH (PAD AND HARDWARE)

- Onyx leatherette cover
- Auto-style contouring
- 8"/20cm wide x 8"/20cm high x 4"/10cm thick
- Single pivot ball for pad orientation
- Limited adjustability – recommended for Contour or High backs
- Height adjustable
- Includes mounting clamp for attachment to back with knob style release for headrest removal



FIXED MOUNT CLAMP

FXMT

- Available on Contour back and High back
- Provides non-removable attachment of headrest